



Small Office Building For Lease or Sale

The Commons at Renaissance
2008 Renaissance Boulevard, King of Prussia, PA



Rendering

- 22,552 SF on two levels
- Ideal for mid-sized user occupiers
- Well sited property offers pleasant tree-top views
- Ample parking on all sides
- Park setting with landscaped jogging trails, picnic areas, and beautiful pond
- Amenities abound - Conshohocken is three minutes drive
- Strong ownership, professional on-site management
- Served by SEPTA Bus Route 95

FOR MORE INFORMATION,
PLEASE CONTACT:

SANDY RICHARDSON

Senior Vice President

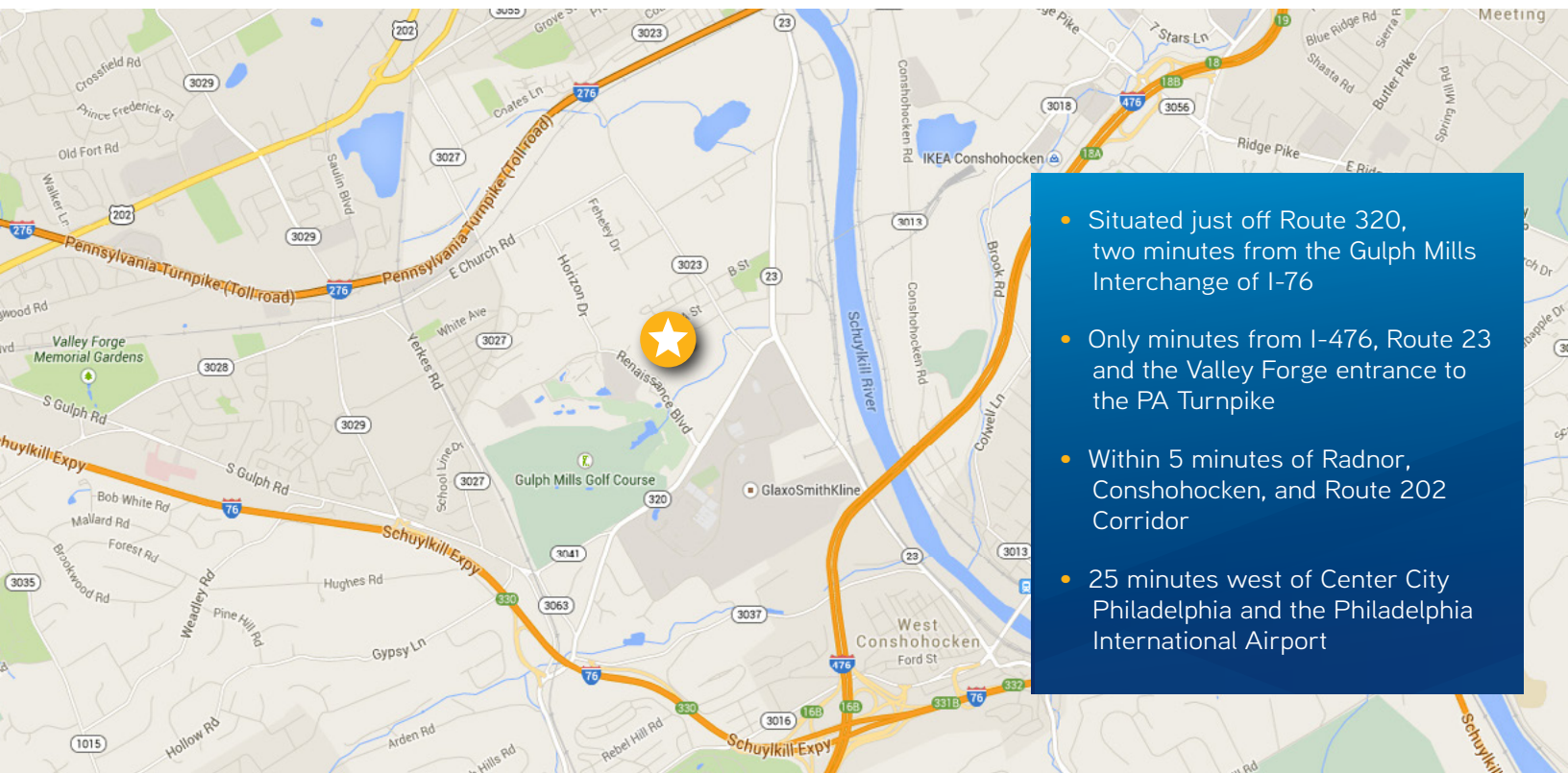
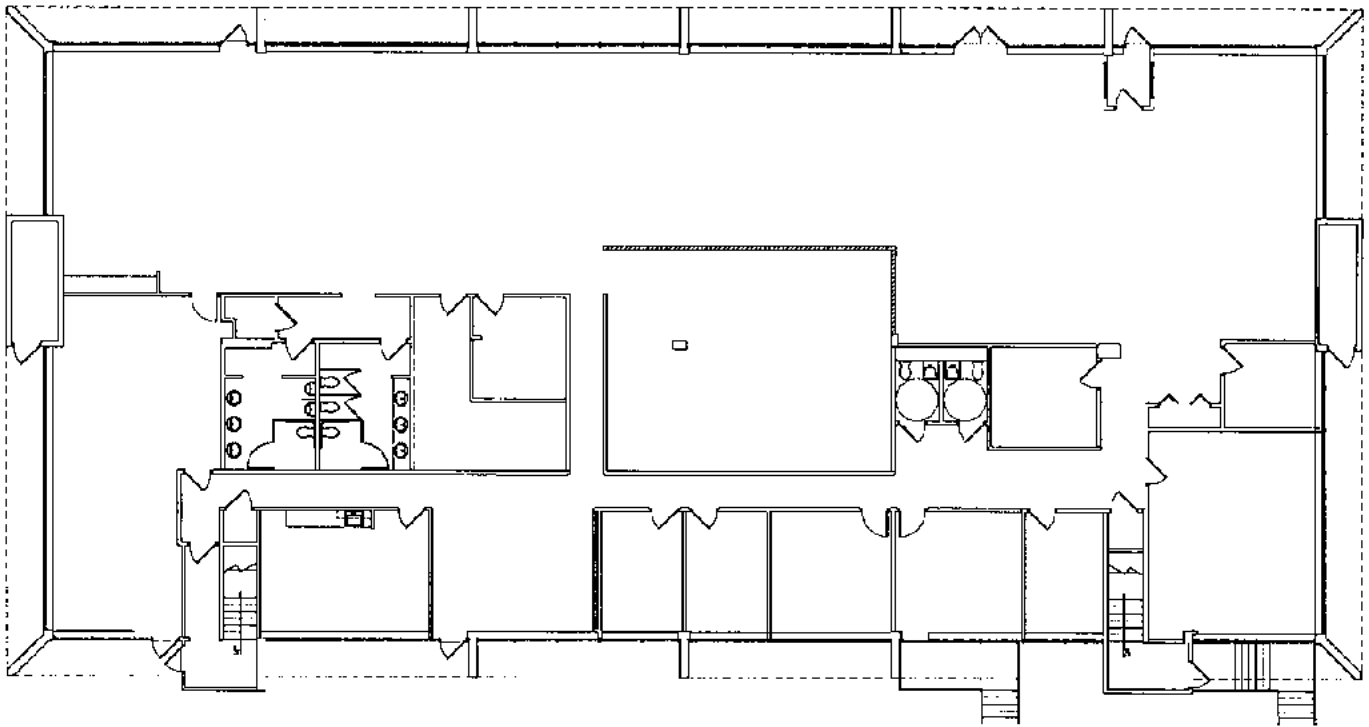
+1 215 928 7533

sandy.richardson@colliers.com



2008 Renaissance Boulevard, King of Prussia, PA

10,895 SF First Floor - Example Floor Plan



@colliersphilly



colliersphilly



colliers.com/philadelphia

The foregoing information was furnished to us by sources which we deem to be reliable, but no warranty or representation is made as to the accuracy thereof. Subject to correction of errors, omissions, change of price, prior sale or withdrawal from market without notice. The aerial image is intended to provide a general outline of the subject property. It is not a survey nor should it be relied upon for purposes of determining property lines or boundaries.

COLLIERS INTERNATIONAL
Ten Penn Center
1801 Market Street Street, Suite 550
Philadelphia, PA 19103
+1 215 925 4600

Colliers
INTERNATIONAL