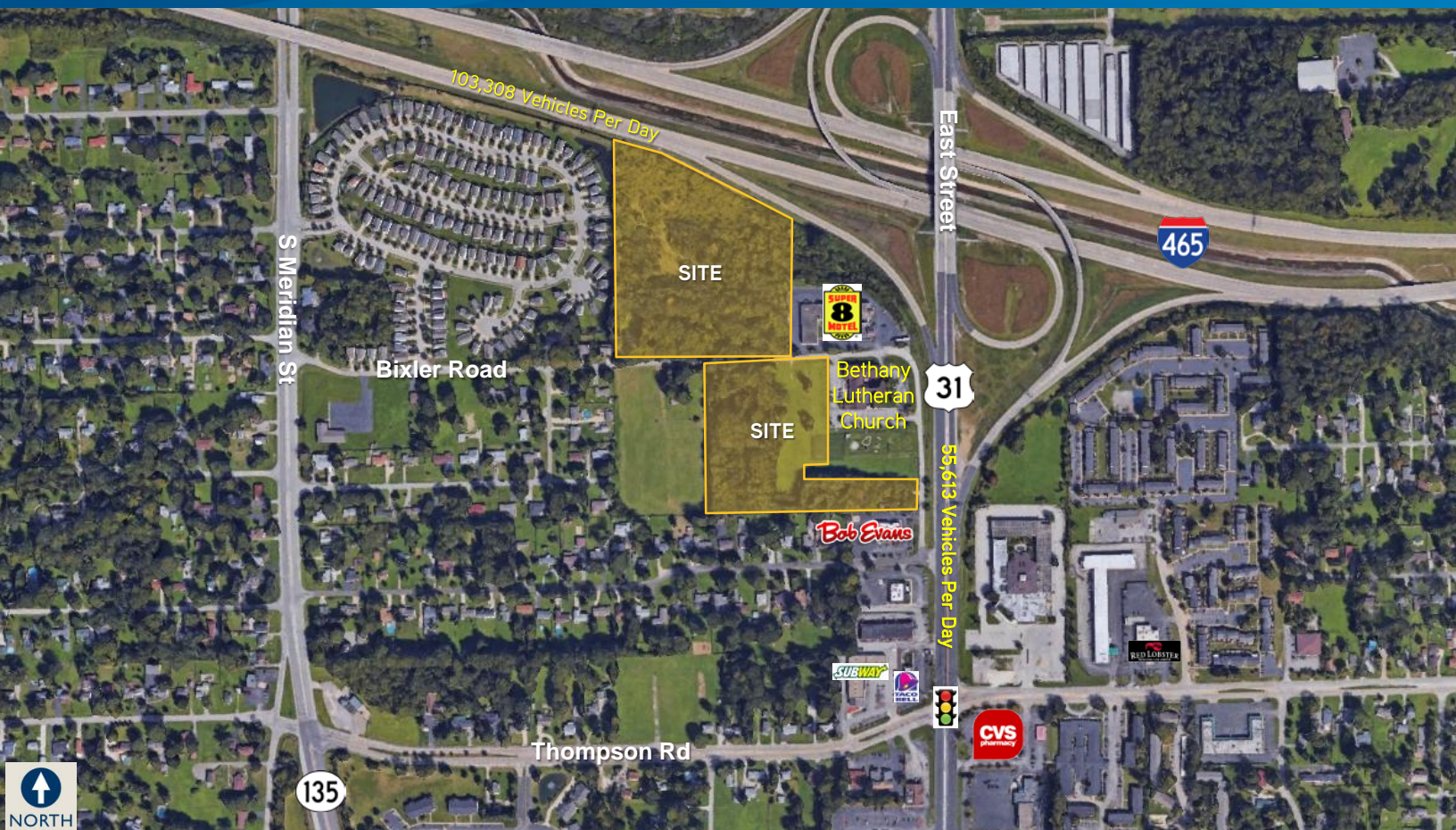


FOR SALE > LAND



I-465 & US 31 South

4804 S EAST STREET, INDIANAPOLIS, IN 46227



Property Highlights

- > 19.23 acres mixed use development
- > Zoned DA
- > Great visibility and access to I-465
 - Approximately 700' of frontage
- > Located on the Southside of Indianapolis minutes away from Downtown Indianapolis, I-65 and I-70
- > Only 14 minutes to Indianapolis International Airport
- > Seller prefers to sell entire site as one but will consider dividing

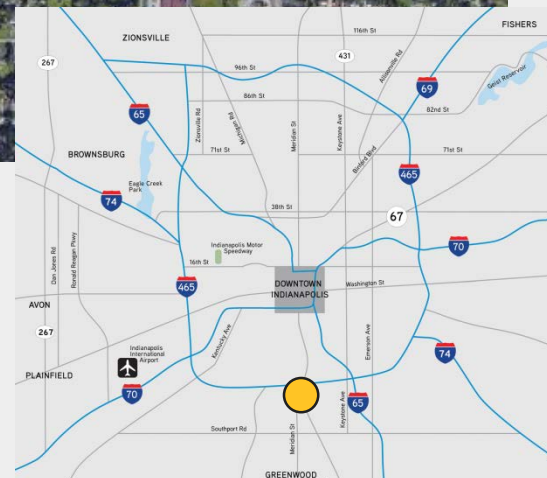
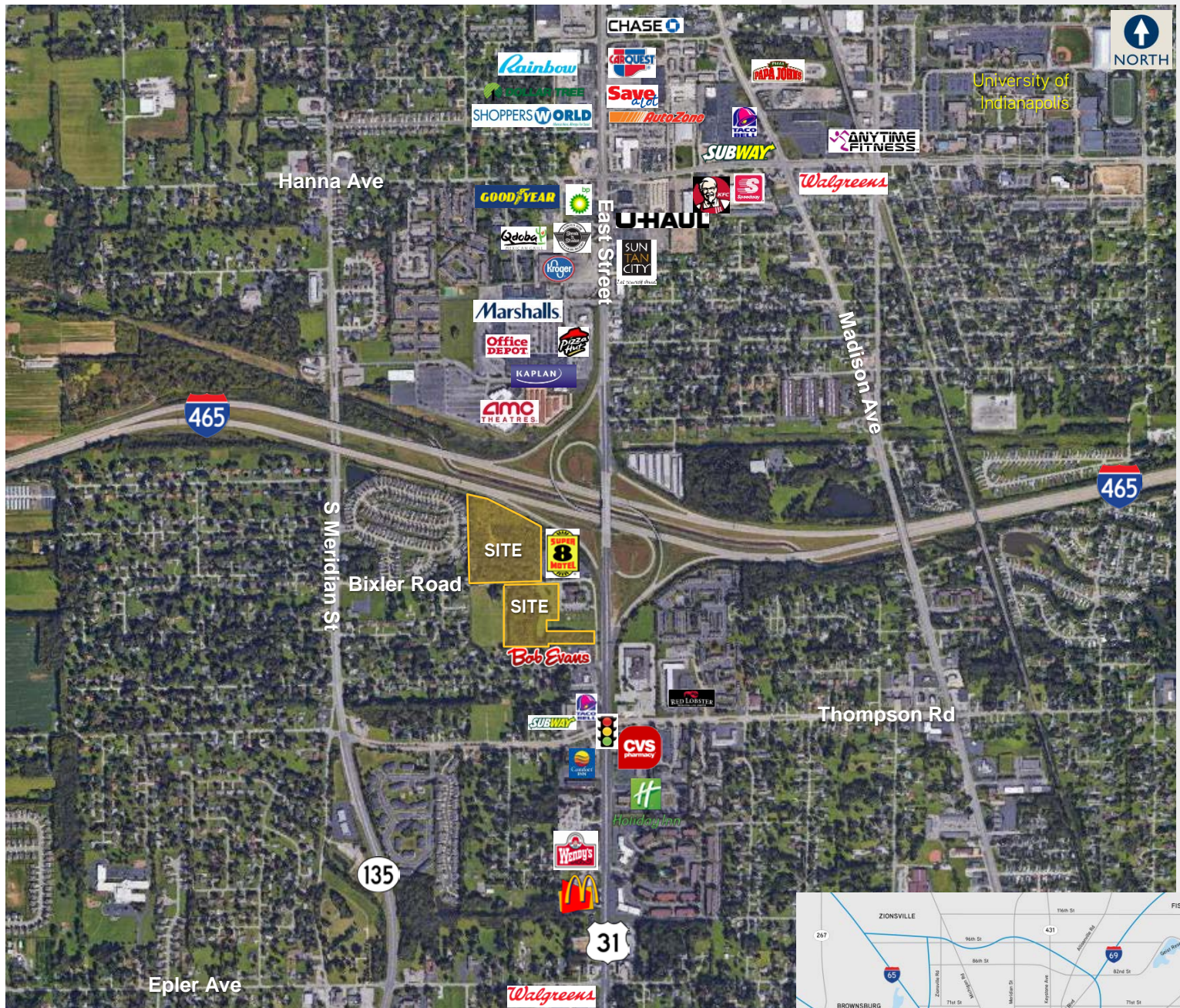
DEMOGRAPHICS

	1 Mile	3 Miles	5 Miles
2016 Population	10,393	71,328	200,258
2021 Projected Population	10,743	73,760	207,302
2016 Total Households	4,145	28,268	77,648
2021 Projected Households	4,245	29,060	80,010
2016 Average Household Income	\$44,069	\$53,062	\$55,074
2021 Projected Average Household Income	\$47,688	\$58,321	\$60,882

BRIAN DELL
317 713 2179
brian.dell@colliers.com

COLLIERS INTERNATIONAL
241 N Pennsylvania St, Suite 300
Indianapolis, IN 46204
colliers.com

Aerial Map



Contact

BRIAN DELL
317 713 2179
brian.dell@colliers.com