

±0.34 ACRES FOR SALE > VACANT LAND > CHERRYDALE

Colliers
INTERNATIONAL

Cherrydale Lot

NPA POINSETT HIGHWAY (HIGHWAY 25). GREENVILLE, SC 29609



Poinsett @ Cherrydale > Property Attributes

- > ±0.34 Acres
- > C-3 Zoning (outside city limits)
- > All Utilities
- > Tax Map #: 0168000400600
- > Sale or Build-to-Suit
- > Traffic Counts: 27,400 VPD on Poinsett Highway (2015) 34,600 VPD on North Pleasantburg Drive
- > Sale Price: **\$225,000**

Demographics (2017)

| | 1-MILE | 3-MILE | 5-MILE |
|-------------------|----------|----------|----------|
| POPULATION | 7,097 | 62,109 | 145,910 |
| AVERAGE HH INCOME | \$39,961 | \$53,103 | \$58,622 |

***DISCLOSURE:** Property is an Agent owned listing.

Contact Us

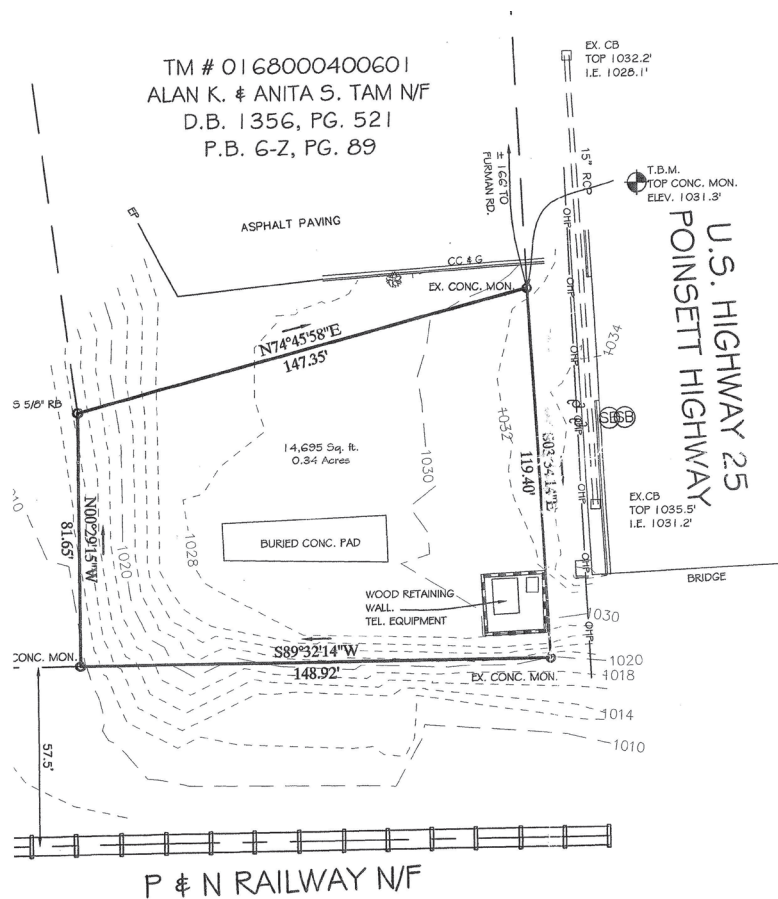
FRANK HAMMOND, CCIM, CPM
864 527 5451 DIRECT
864 297 4950 MAIN
frank.hammond@colliers.com

COLLIERS INTERNATIONAL
55 E. Camperdown Way, Suite 200
Greenville, South Carolina 29601
www.colliers.com/southcarolina

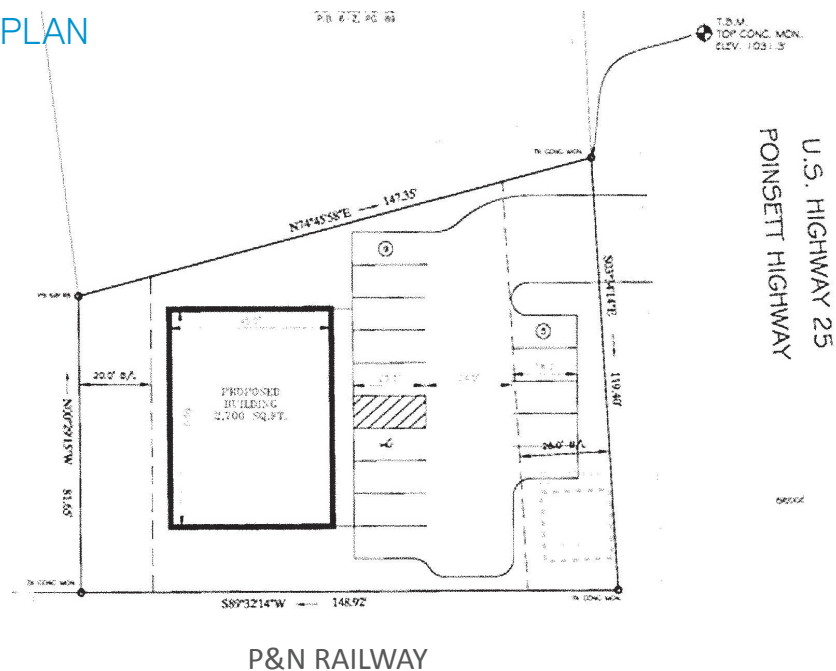
CHERRYDALE LOT > VACANT LAND >

NPA POINSETT HIGHWAY (HWY. 25), GREENVILLE, SC 29609

PLAT



CONCEPTUAL SITE PLAN



This document has been prepared by Colliers International for advertising and general information only. Colliers International makes no guarantees, representations or warranties of any kind, expressed or implied, regarding the information including, but not limited to, warranties of content, accuracy and reliability. Any interested party should undertake their own inquiries as to the accuracy of the information. Colliers International excludes unequivocally all inferred or implied terms, conditions and warranties arising out of this document and excludes all liability for loss and damages arising there from. This publication is the copyrighted property of Colliers International and/or its licensor(s). ©2016. All rights reserved.