



**OVERSIZED  
GRADE DOORS**

For Lease

# North Hillsboro Industrial

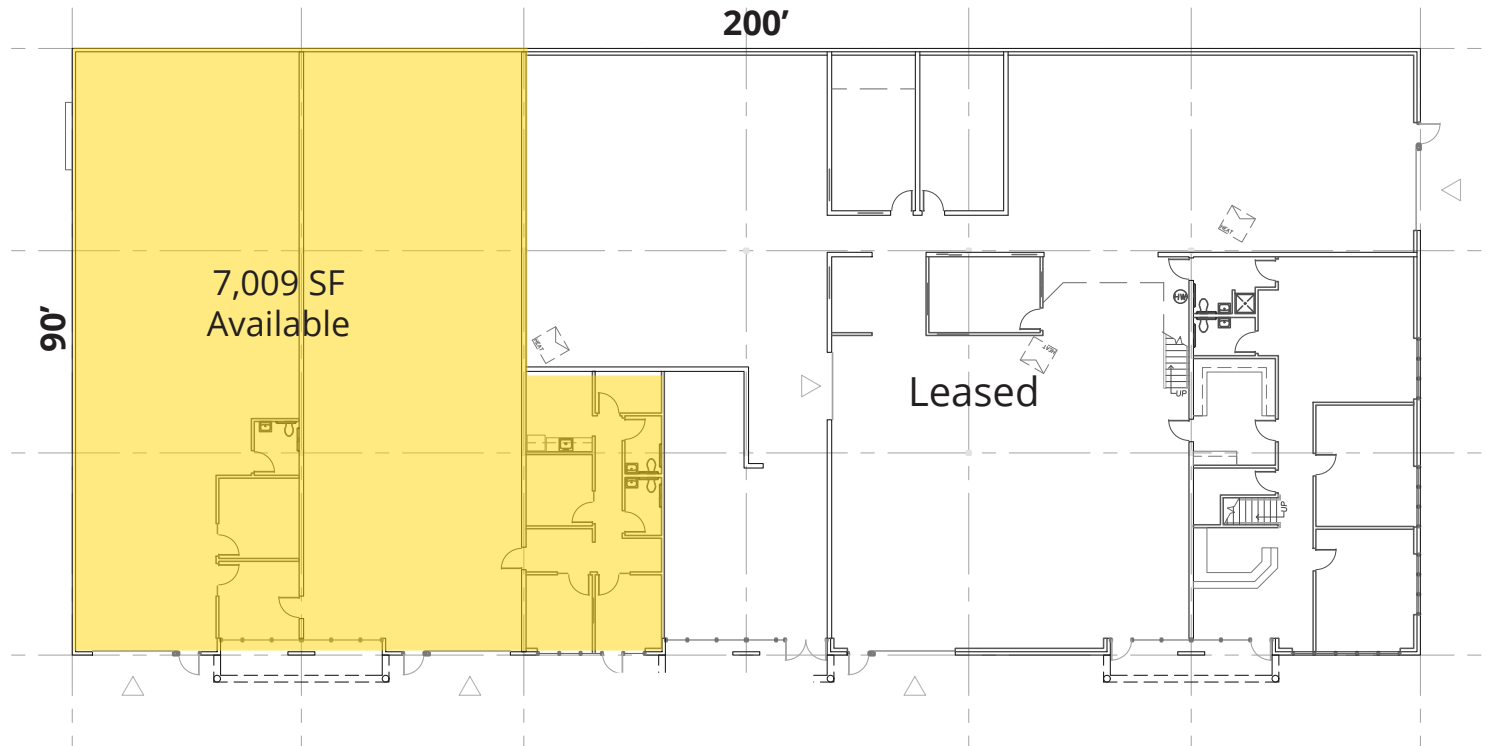
6110 NE Croeni | Hillsboro, Oregon



# Conceptual Floorplan



# As-Built Floorplan





Map Source: ESRI



Easy freeway access



3-Phase Power



Fully sprinklered



Parking ratio  
2/1,000



21'  
clear height



Oversized  
grade loading



Zoning:  
IP Industrial

# Hillsboro Industrial For Lease

6110 NE Croeni | Hillsboro, OR

## Contact:

### **Karen Lisignoli, SIOR**

Associate Vice President  
+1 503 740 1679  
karen.lisignoli@colliers.com

### **Mike Thomas**

Senior Vice President  
+1 503 807 0454  
mike.thomas@colliers.com

Colliers Portland  
851 SW 6th Avenue, Suite 1600  
Portland, OR 97204



This document/email has been prepared by Colliers for advertising and general information only. Colliers makes no guarantees, representations or warranties of any kind, expressed or implied, regarding the information including, but not limited to, warranties of content, accuracy and reliability. Any interested party should undertake their own inquiries as to the accuracy of the information. Colliers excludes unequivocally all inferred or implied terms, conditions and warranties arising out of this document and excludes all liability for loss and damages arising there from. This publication is the copyrighted property of Colliers and /or its licensor(s). © 2026. All rights reserved. This communication is not intended to cause or induce breach of an existing listing agreement.

