

FOR LEASE > CREATIVE OFFICE SPACE

1212 East Carson Street

PITTSBURGH, PA 15203



Building Amenities

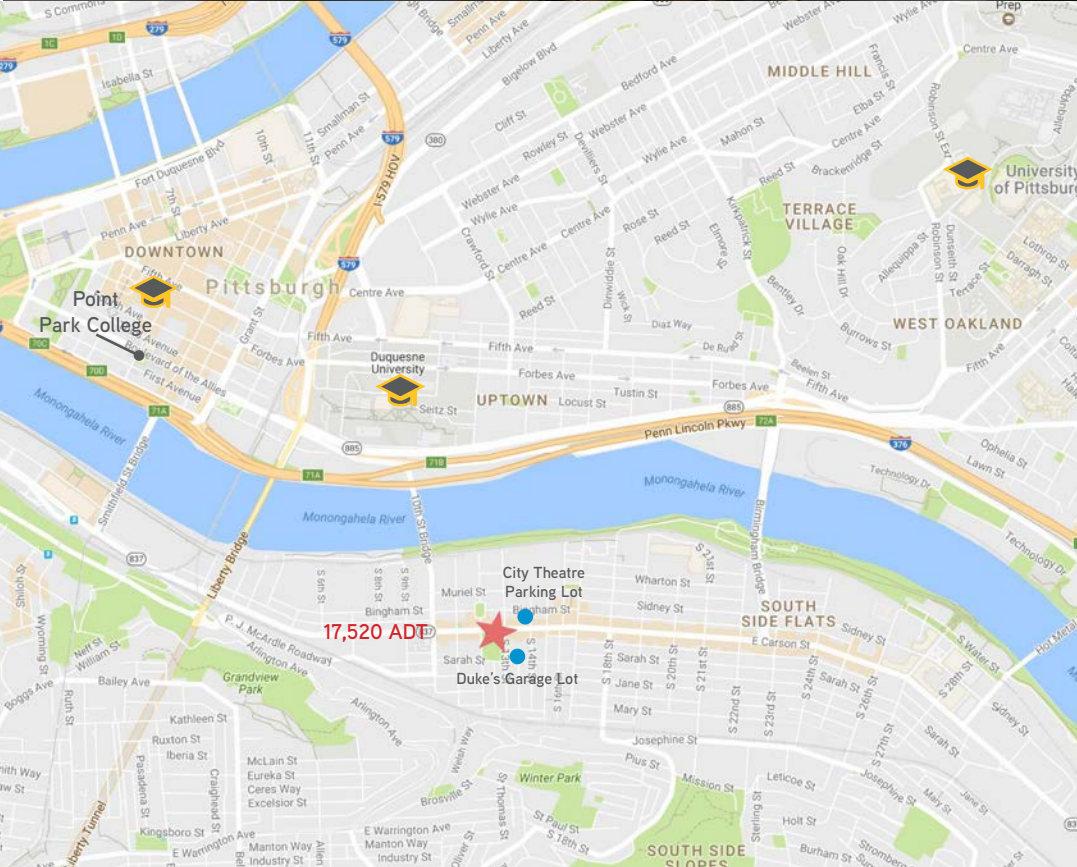
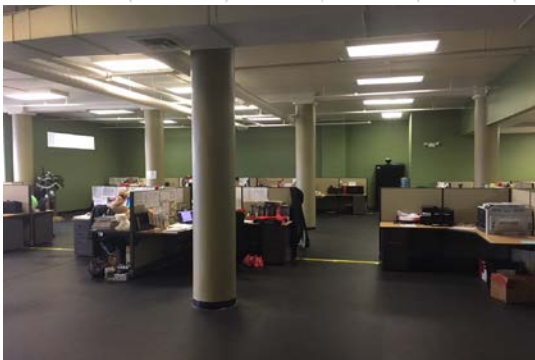
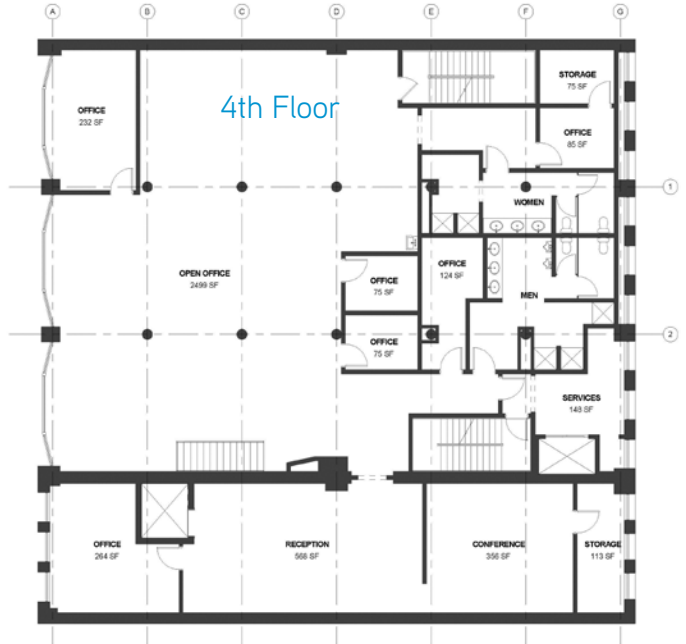
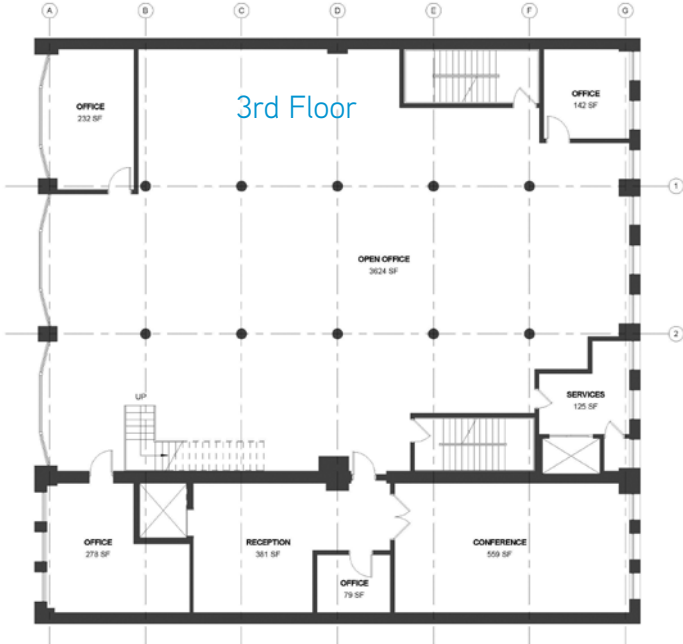
- > 18,000 SF Available on 3 floors
- > Can be subdivided | 6,000 - 18,000 SF
- > Located in the heart of the South Side on East Carson Street Business District
- > Creative office space with high ceilings
- > Secure building with key code entry
- > Abundant natural light provided by large floor to ceiling windows
- > Located directly along bus route and within walking distance of restaurants & retail shops
- > Minutes from Downtown Pittsburgh, Oakland, Station Square, the University of Pittsburgh, Duquesne University, Point Park College and area hospitals
- > Close proximity to major arteries into and out of the city



MAMADOU BALDÉ ESQ.
VICE PRESIDENT | PITTSBURGH
OFFICE BROKERAGE
412 321 4200 | EXT. 224
mamadou.balde@colliers.com

PAUL HORAN
FOUNDING PRINCIPAL | PITTSBURGH
OFFICE BROKERAGE
412 321 4200 | EXT. 205
paul.horan@colliers.com

EDWARD LAWRENCE MBA
PRINCIPAL | PITTSBURGH
OFFICE BROKERAGE
412 321 4200 | EXT. 213
ed.lawrence@colliers.com



Contact Us

MAMADOU BALDÉ ESQ.
VICE PRESIDENT | PITTSBURGH
OFFICE BROKERAGE
412 321 4200 EXT. 224
mamadou.balde@colliers.com

PAUL HORAN
FOUNDING PRINCIPAL | PITTSBURGH
OFFICE BROKERAGE
412 321 4200 EXT. 205
paul.horan@colliers.com

EDWARD LAWRENCE MBA
PRINCIPAL | PITTSBURGH
OFFICE BROKERAGE
412 321 4200 EXT. 213
ed.lawrence@colliers.com

COLLIERS INTERNATIONAL | PITTSBURGH
Two Gateway Center, Suite 125
603 Stanwix Street
Pittsburgh, PA 15222
www.colliers.com

The information contained herein has been given to us by the owner of the property or other sources we deem reliable. We have no reason to doubt its accuracy, but we do not guarantee it. All information should be verified prior to purchase or lease.

