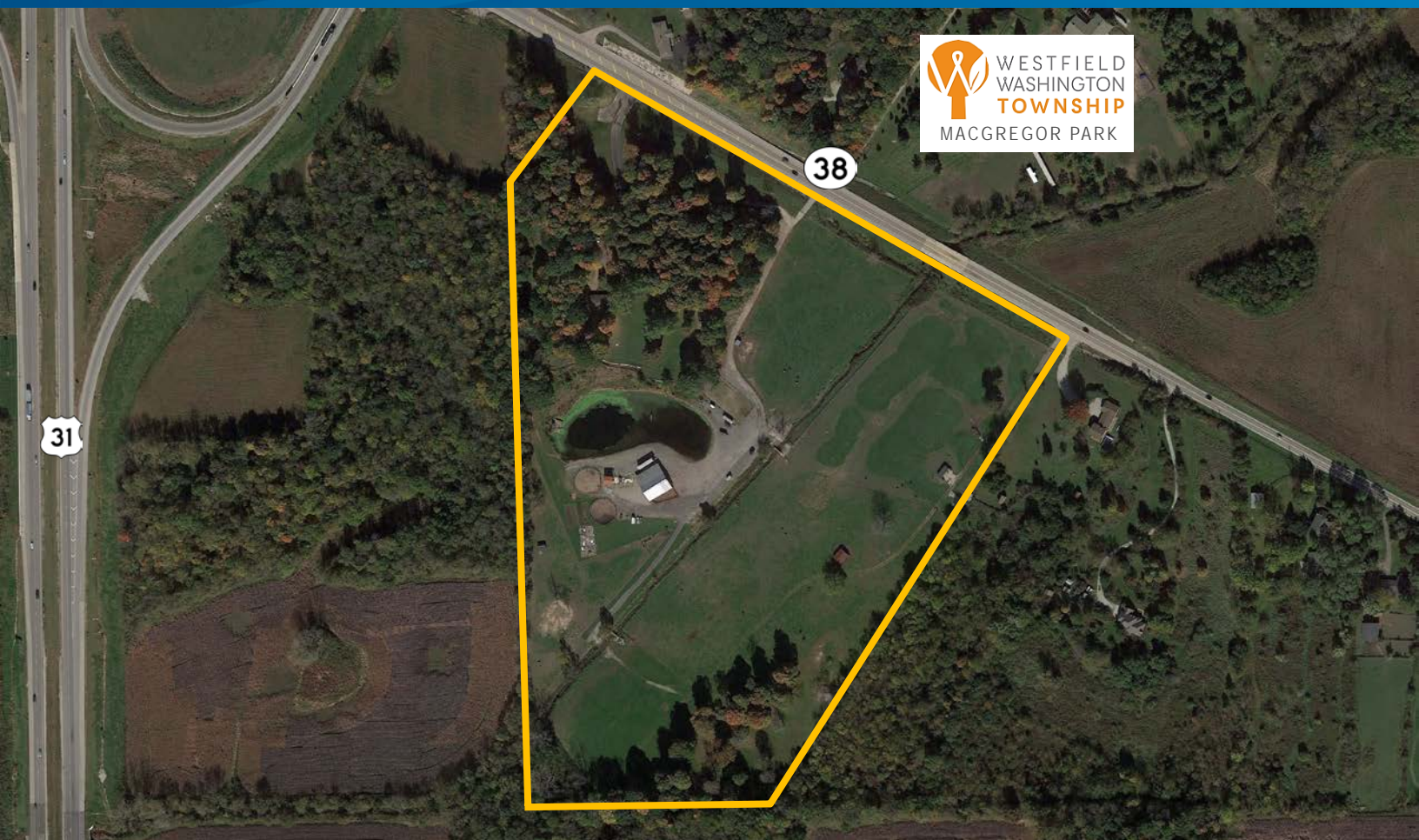


FOR SALE > LAND



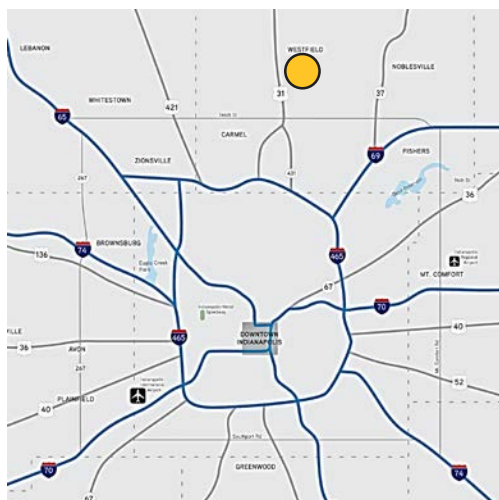
2415 E State Road 38

WESTFIELD, IN 46074



Property Highlights

- > ± 38 acres available for sale
- > Close to Aurora Development & Chatham Hills PUD
- > Adjacent to 96 acre MacGregor Nature Park
- > Direct access off State Road 38
- > Westfield Washington land use calls for Regional Commercial & Business Parks
- > 31,053 average daily traffic count at SR 38 & US 31
- > Zoned AG-SF1



JIMMY COHOAT
317 713 2124
jimmy.cohoat@colliers.com

STEPHEN DAUM
317 713 2144
stephen.daum@colliers.com

COLLIERS INTERNATIONAL
241 N Pennsylvania St, Suite 300
Indianapolis, IN 46204
colliers.com

Aerial Map



DEMOGRAPHICS

	1 Mile	3 Miles	5 Miles
Population 2017	6,563	35,561	76,608
Population Projected 2017	6,995	39,062	85,513
Average Household Income	\$102,476	\$94,663	\$100,917
Total Households 2017	2,167	13,297	28,050
Households Projected 2022	2,323	14,650	31,357

Contact

JIMMY COHOAT

317 713 2124

jimmy.cohoat@colliers.com

STEPHEN DAUM

317 713 2144

stephen.daum@colliers.com