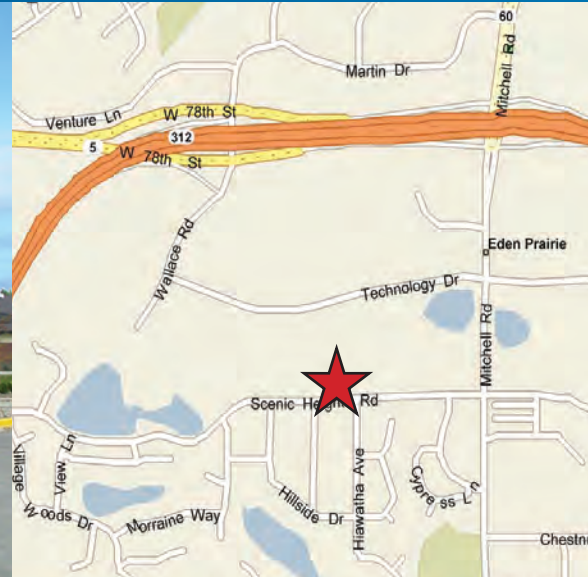


FOR LEASE > OFFICE SPACE



Scenic Heights Office Center

14850-14852 SCENIC HEIGHTS RD, EDEN PRAIRIE, MN 55344



Building Amenities

- > Premium office space built-to-suit
- > New construction includes attractive brick and stone facade with functional, efficient layout
- > Large windows provide abundant natural light
- > Building and monument signage available
- > On-site property management
- > Convenient, ample parking

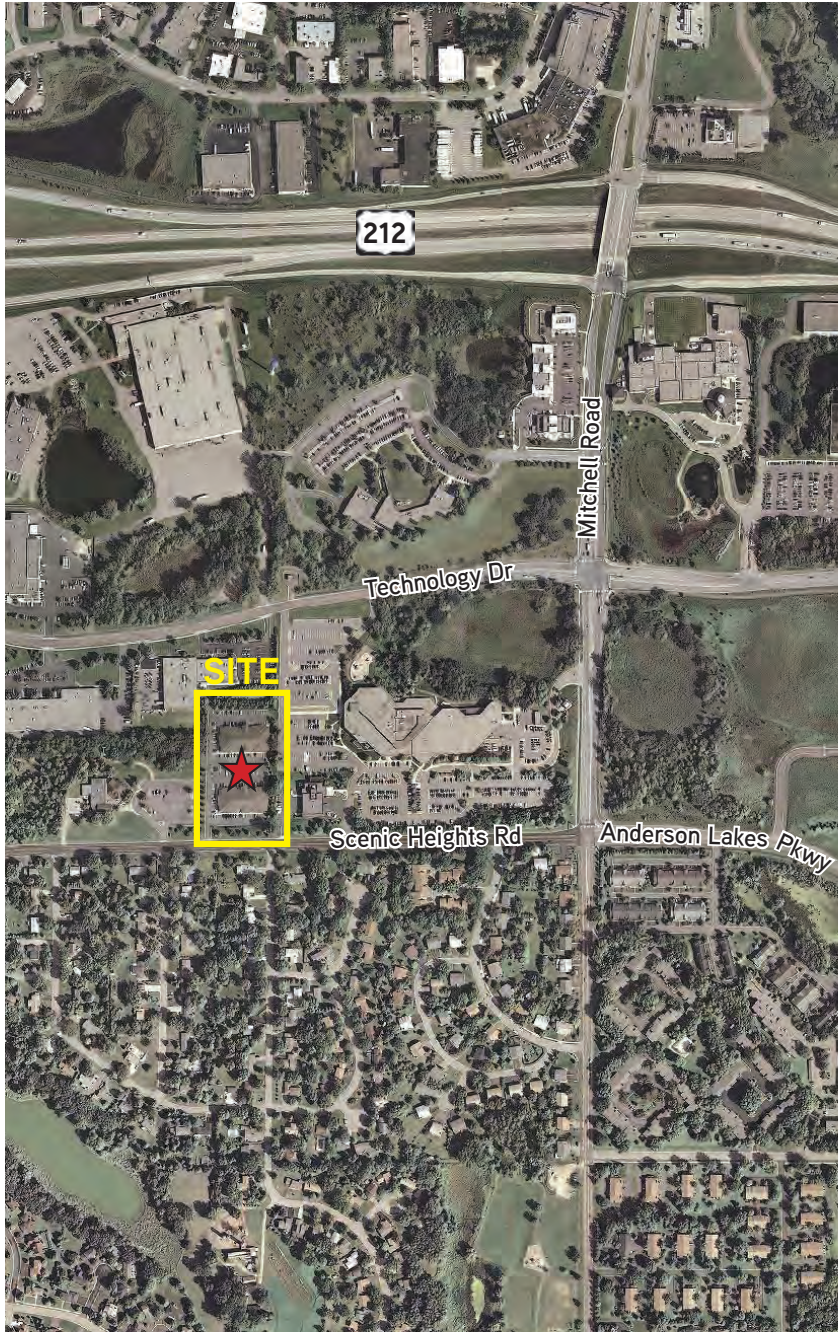
Excellent location next to Eden Prairie City Hall with easy access to Highway 5, Highway 212 and I-494. Area amenities include shopping, restaurants, banks, hotels and recreation.

COLLIERS INTERNATIONAL
4350 Baker Road, Suite 400
Minnetonka, MN 55343
www.colliers.com

MICHAEL GELFMAN, SIOR
952 897 7875
michael.gelfman@colliers.com

NATHAN KARRICK
952 897 7722
nathan.karrick@colliers.com

Scenic Heights Office Center



Contact Information

MICHAEL GELFMAN, SIOR
952 897 7875
michael.gelfman@colliers.com

NATHAN KARRICK
952 897 7722
nathan.karrick@colliers.com

COLLIERS INTERNATIONAL
4350 Baker Road, Suite 400
Minnetonka, MN 55343
www.colliers.com



PROPERTY FACT SHEET

Scenic Heights Office Center

**PROPERTY ADDRESS:**

14850-14852 Scenic Heights Rd
Eden Prairie, MN 55347

TOTAL SQUARE FEET:

35,776

NUMBER OF BUILDINGS:

2

FLOORS:

One per building

YEAR BUILT:

2000

PARKING:

5.1/1,000

NET RENTAL RATES:

\$12.50 per square foot

2017 EST. CAM & REAL ESTATE TAX:

\$8.90 total per square foot

AMENITIES:

- On-site property management
- Convenient, ample parking
- Card key access
- Monument and building signage



For Leasing Information, Contact:

MICHAEL GELFMAN, SIOR
952 897 7875
michael.gelfman@colliers.com

NATHAN KARRICK
952 897 7722
nathan.karrick@colliers.com

COLLIERS INTERNATIONAL
4350 Baker Road, Suite 400
Minnetonka, MN 55343
www.colliers.com