



439 Highland Avenue NE

Atlanta, GA

11,127 SF Available

Whitney Spangler
Senior Vice President
+1 404 574 1046
whitney.spangler@colliers.com

David Martos
Vice President
+1 404 574 1003
david.martos@colliers.com

Property Details

Click for Virtual Tour

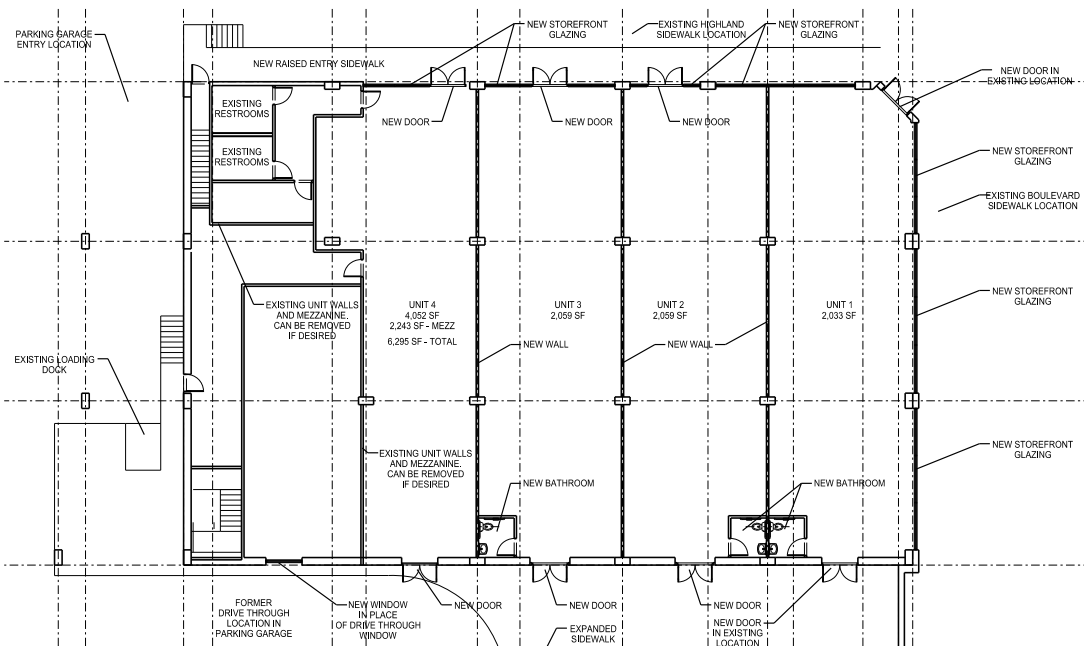
- Rare intown small box retail vacancy situated below 257 luxury apartments
- Prime location on the corner of Boulevard & Highland Ave with easy access to John Lewis Freedom Pkwy and I-75/85
- Located within a mile of Ponce City Market, Krog Street Market & the Beltline's Eastside Trail
- 56 dedicated retail parking spaces directly backing up to the space
- Drive-through access

	1 mile	3 miles	5 miles
Total Population	12,881	81,694	203,157
Total Households	6,735	38,526	93,065
Average HH Income	\$150,619	\$154,285	\$140,611
Daytime Population	11,058	98,277	250,218



69,880 VPD
Freedom Pkwy

20,400 VPD
Boulevard NE



Retail Trade Area

1	Tribute Lofts	252 units
2	Edge on the Beltline	350 units
3	Junction Krog	130K SF office
4	Citizen O4W	114 units
5	Highland Walk	350 units
6	North Highland Steel	238 units
7	Mariposa Lofts	253 units
8	Windsor O4W	268 units
9	Amli Parkside	301 units
10	Iris O4W	320 units
11	Anthem on Ashley	244 units

