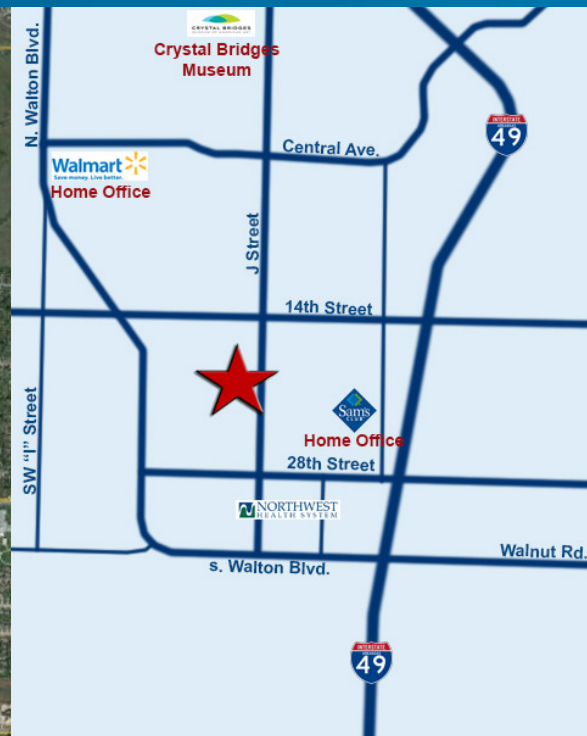
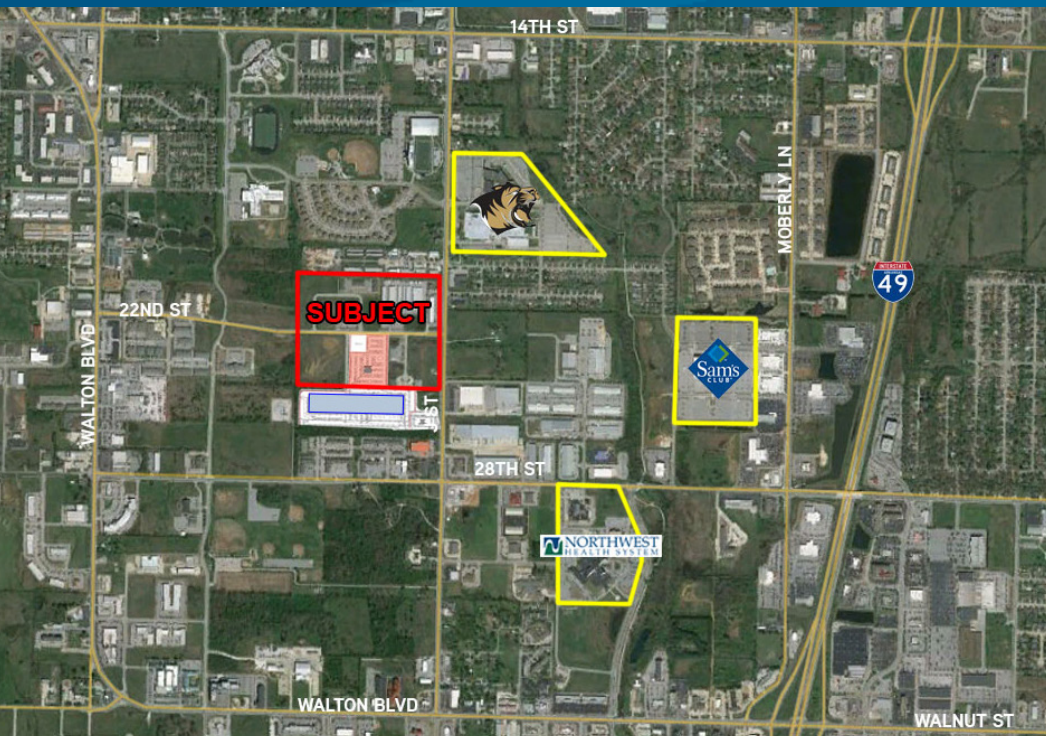


FOR SALE > COMMERCIAL LAND

Cottonwood Village

SE J STREET, BENTONVILLE, AR 72712



Property Information

- > Adjacent to Neighborhood Market Layout Center
- > Close to Walmart and Sam's Home Offices
- > Lot sizes range from 0.76 +/- acres to 7.63 +/- acres
- > Sites are ready for development with utilities and detention completed

Agent Owned--This property is owned in part by Real Estate Agents and Brokers at Colliers International.

Contact

BUTCH GURGANUS, CCIM | SIOR
PRINCIPAL | ARKANSAS
DIR: 479.845.1504
MOB: 479.644.7266
butch.gurganus@colliers.com

This document has been prepared by Colliers International for advertising and general information only. Colliers International makes no guarantees, representations or warranties of any kind, expressed or implied, regarding the information including, but not limited to, warranties of content, accuracy and reliability. Any interested party should undertake their own inquiries as to the accuracy of the information. Colliers International excludes unequivocally all inferred or implied terms, conditions and warranties arising out of this document and excludes all liability for loss and damages arising there from. This publication is the copyrighted property of Colliers International and/or its licensor(s). ©2010. All rights reserved.

COLLIERS INTERNATIONAL
4204 S Pinnacle Hills Pkwy, Ste 102
Rogers, AR 72758
www.colliers.com/arkansas

Cottonwood Village

Lot #	Acreage	Square Feet	Price PSF	Price
1	2.30	100,100	\$6.00	\$600,600
8	0.88	38,513	\$6.50	\$250,334
10	0.97	42,263	\$6.50	\$274,707
11	0.79	34,560	\$6.50	\$224,642
12	0.76	33,299	\$8.00	\$266,392
13	0.97	42,263	\$8.00	\$338,100
19	0.72	31,379	\$7.50	\$235,346
25	7.63	332,296	\$6.00	\$1,993,776
30	1.01	43,950	\$8.75	\$384,563
35	1.42	61,807	\$8.25	\$509,908

Cottonwood Village > Site Plan

