

FOR SALE OR LEASE



1710

E. WASHINGTON STREET  
PHOENIX, AZ 85034

Near Downtown Phoenix

±36,556 square foot industrial building on 1.44 acres



ROB MARTENSEN, SIOR, CCIM  
Executive Vice President  
rob.martensen@colliers.com  
602.222.5082

COLLIERS INTERNATIONAL  
2390 E. Camelback Road, Suite 100  
Phoenix, AZ 85016  
602.222.5000  
[www.colliers.com/greaterphoenix](http://www.colliers.com/greaterphoenix)

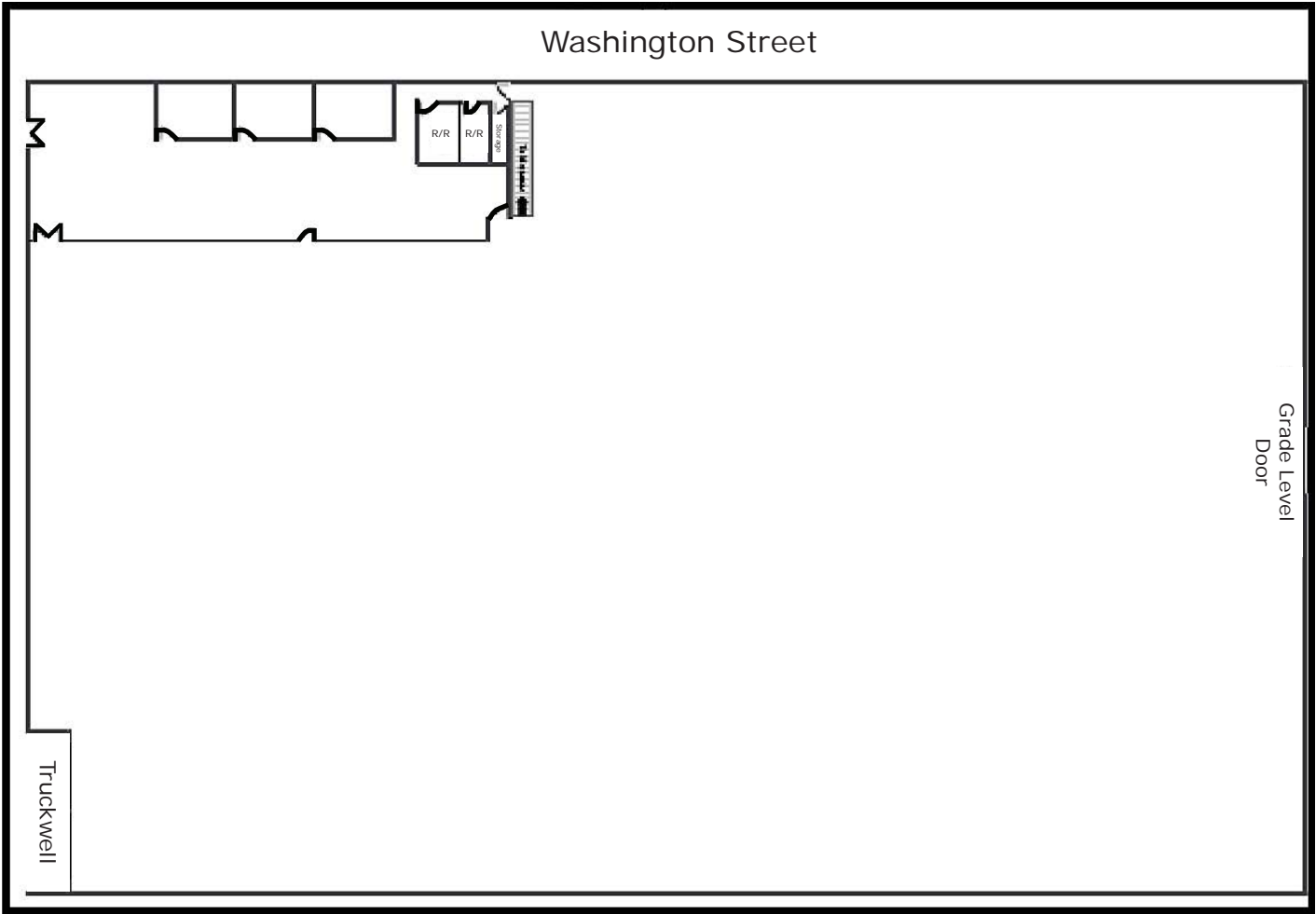




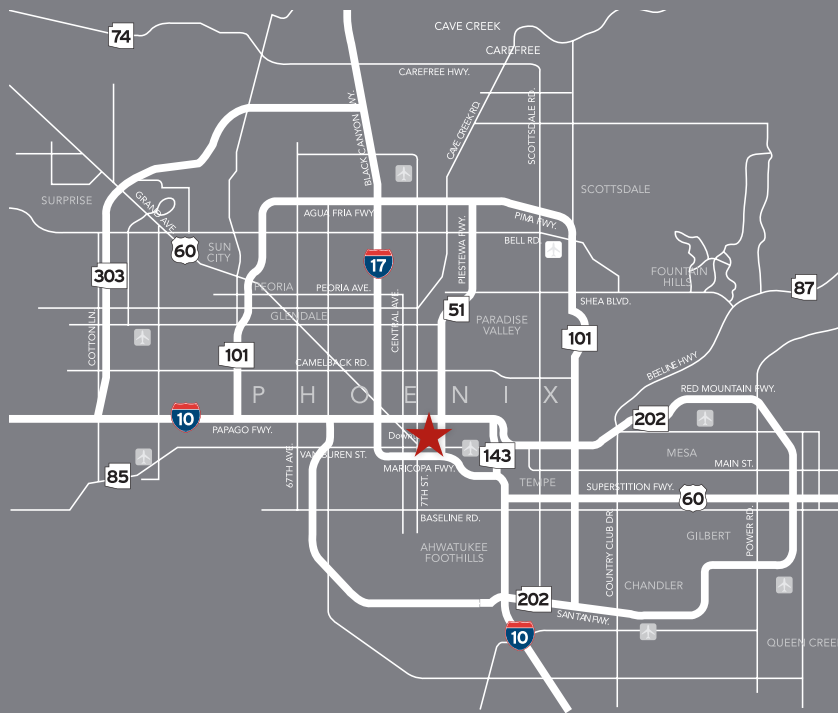
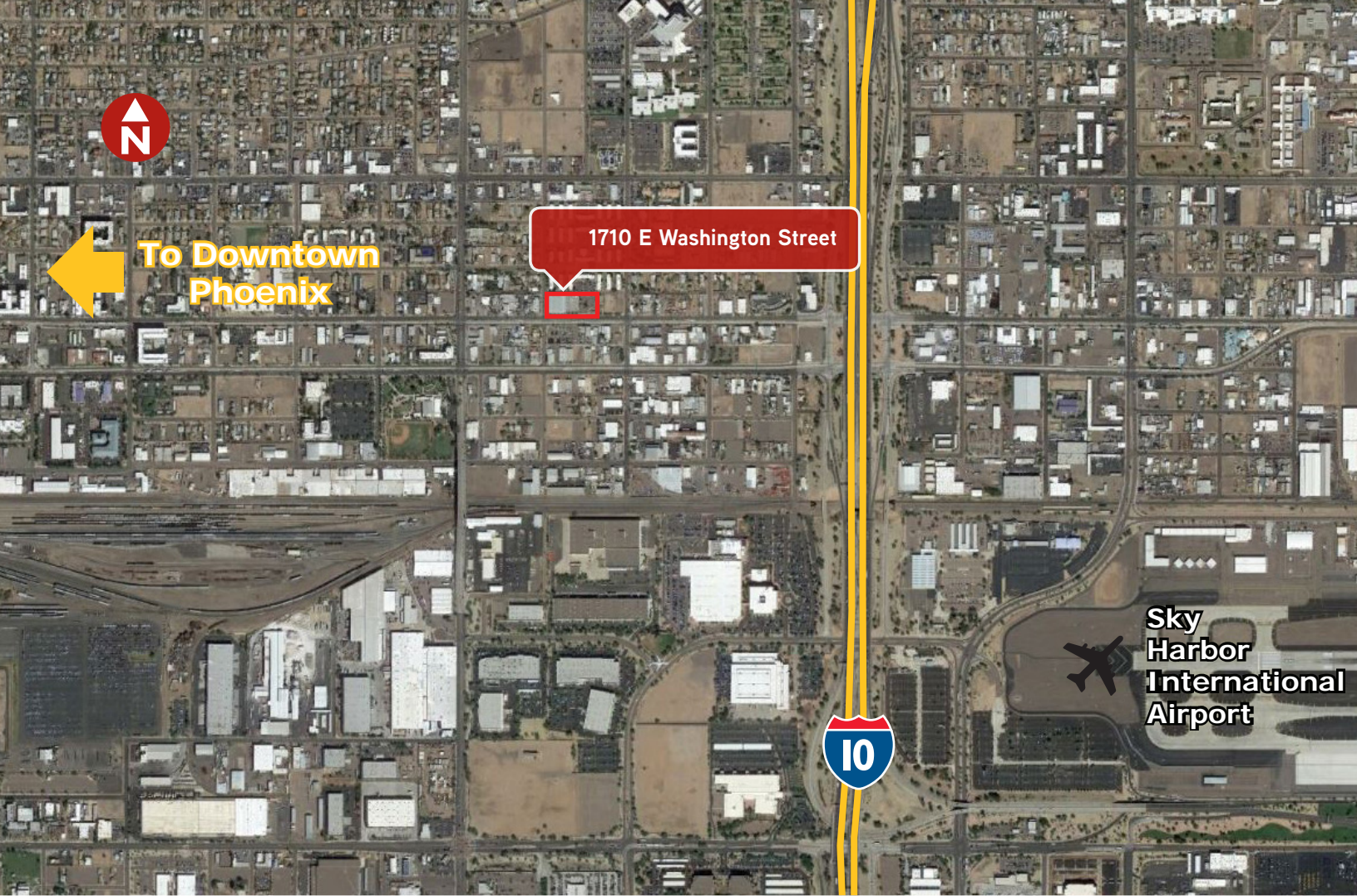
## FEATURES

- ±36,556 square foot industrial building
- ±2,500 square feet of office
- Large fenced yard/parking area
- Clear height: 18'
- Parking: 20 surface spaces
- Close proximity to I-10 freeway, light rail
- Power: 800 amps
- 3 grade level doors (12' x 14')
- Double truckwell (with levelers)
- Zoning: C-3, City of Phoenix
- Washington Street frontage
- Minutes to downtown Phoenix, Sky Harbor International Airport

FLOOR PLAN







## Contact:

**Rob Martensen, SIOR, CCIM**  
EXECUTIVE VICE PRESIDENT  
DIR +1 602 222 5082  
[rob.martensen@colliers.com](mailto:rob.martensen@colliers.com)



**COLLIERS INTERNATIONAL**  
2390 E. Camelback Road, Suite 100  
Phoenix, AZ 85016  
602.222.5000  
[www.colliers.com/greaterphoenix](http://www.colliers.com/greaterphoenix)

This document has been prepared by Colliers International for advertising and general information only. Colliers International makes no guarantees, representations or warranties of any kind, expressed or implied, regarding the information including, but not limited to, warranties of content, accuracy and reliability. Any interested party should undertake their own inquiries as to the accuracy of the information. Colliers International excludes unequivocally all inferred or implied terms, conditions and warranties arising out of this document and excludes all liability for loss and damages arising there from. This publication is the copyrighted property of Colliers International and/or its licensor(s). ©2018. All rights reserved.