

Port Of Virginia New Class A Warehouse
Ready for Immediate Occupancy



VIRGINIA COMMERCE CENTER

342,640 SF for Lease - Divisible



[View Property
Video](#)

301 Kenyon Road,
Suffolk, VA 23434 ~ Building 200

Lang Williams, SIOR
Executive Vice President
+1 757 679 9106
lang.williams@colliers.com

Ashton Williamson, MAI, SIOR
Executive Vice President
+1 757 288 3438
ashton.williamson@colliers.com

Chamie Burroughs
Senior Vice President
+1 757 478 9626
chamie.burroughs@colliers.com



Executive SUMMARY

Virginia Commerce Center is 101-acre master-planned business park in Suffolk, Virginia, designed & developed by McDonald Development Company. The park offers convenient access to The Port of Virginia via US-58 Bypass, I-64, I-264 and I-664, with convenient access west on US-58 to I-95 and I-85, and is ideal for distribution of import/export freight and other industrial uses. Construction is complete on Building 200, a 342,640 square foot front-load distribution warehouse. An additional rear-load distribution warehouse totaling 290,009 square feet is planned (adjacent) offering expansion & rail potential.



Property Highlights



342,640 SF
divisible with front loading



Premium Tilt-Up
Durable, efficient concrete construction



2,879 ±SF
High-Quality, Move-In Ready Office



30 Trailer Spaces
with Additional Trailer Parking at the Truck Docks



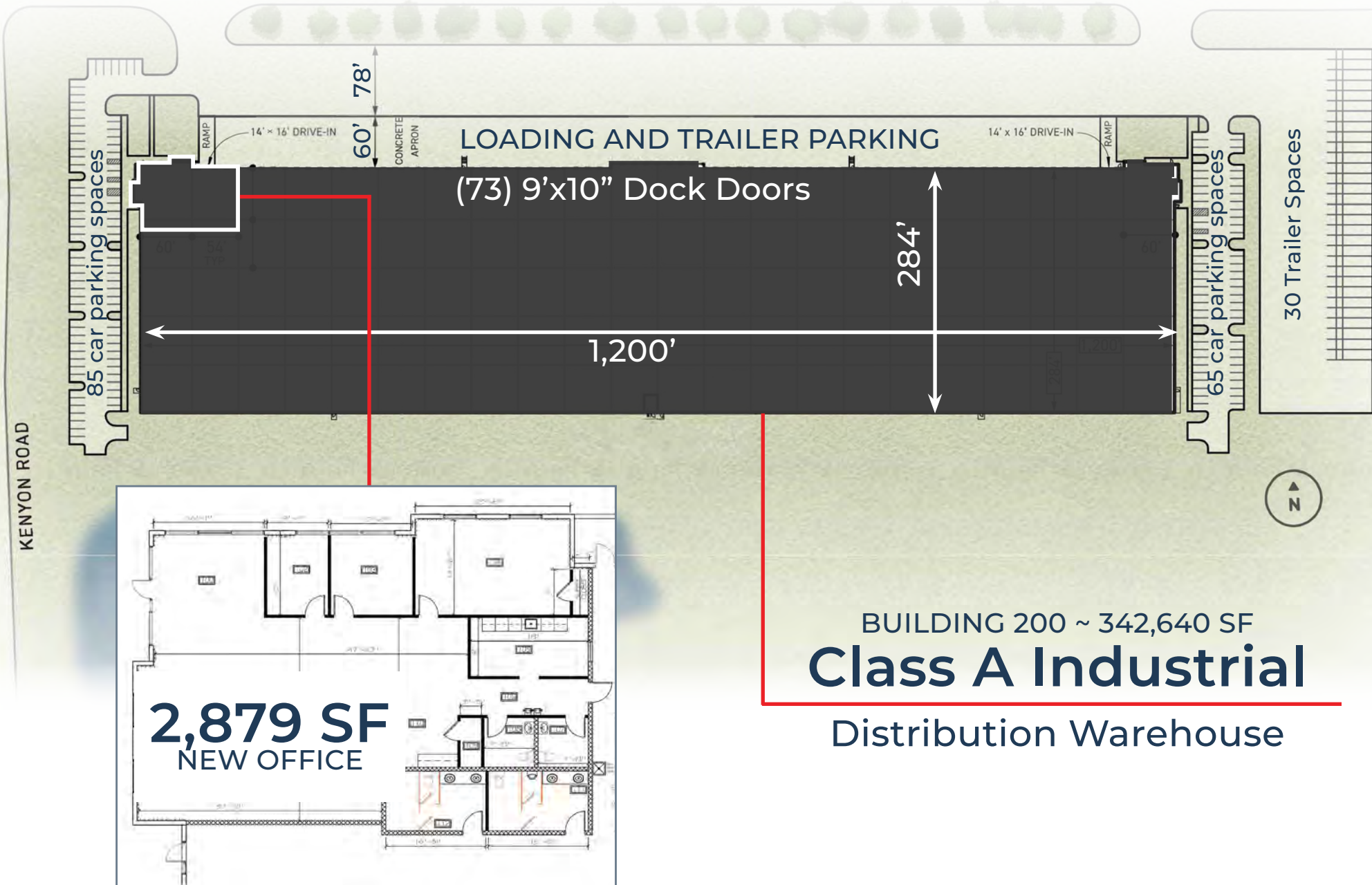
Direct Access
west on US-58 to I-95 and I-85

PROPERTY FEATURES

Address	301 Kenyon Road, Suffolk, VA 23434
Status	Delivered. New. Ready to Occupy.
Building Type	High Image, Front-load warehouse
Building Size	342,640 sq. ft. / Divisible
Ceiling Height	36' clear minimum
Sprinkler	ESFR fire suppression system at 52 psi with fire pump
Concrete Slab	7", 4500 psi concrete
Column Spacing	54' W x 56' D Typ.; 60' D staging bay
Loading Doors	(73) 9'x10' dock-highs; 15 equipped with 40K lb pit levelers; (2) 14'x16' ramped drive-ins
Lighting	High Efficiency LED at 30 Foot Candles
Car Parking	150 spaces
Trailer Parking	30 spaces with concrete dolly pad
Power	3000-amp 480/277 Volt 3-phase
Truck Court	138' deep with 60' concrete apron



SITE AND FLOOR PLAN





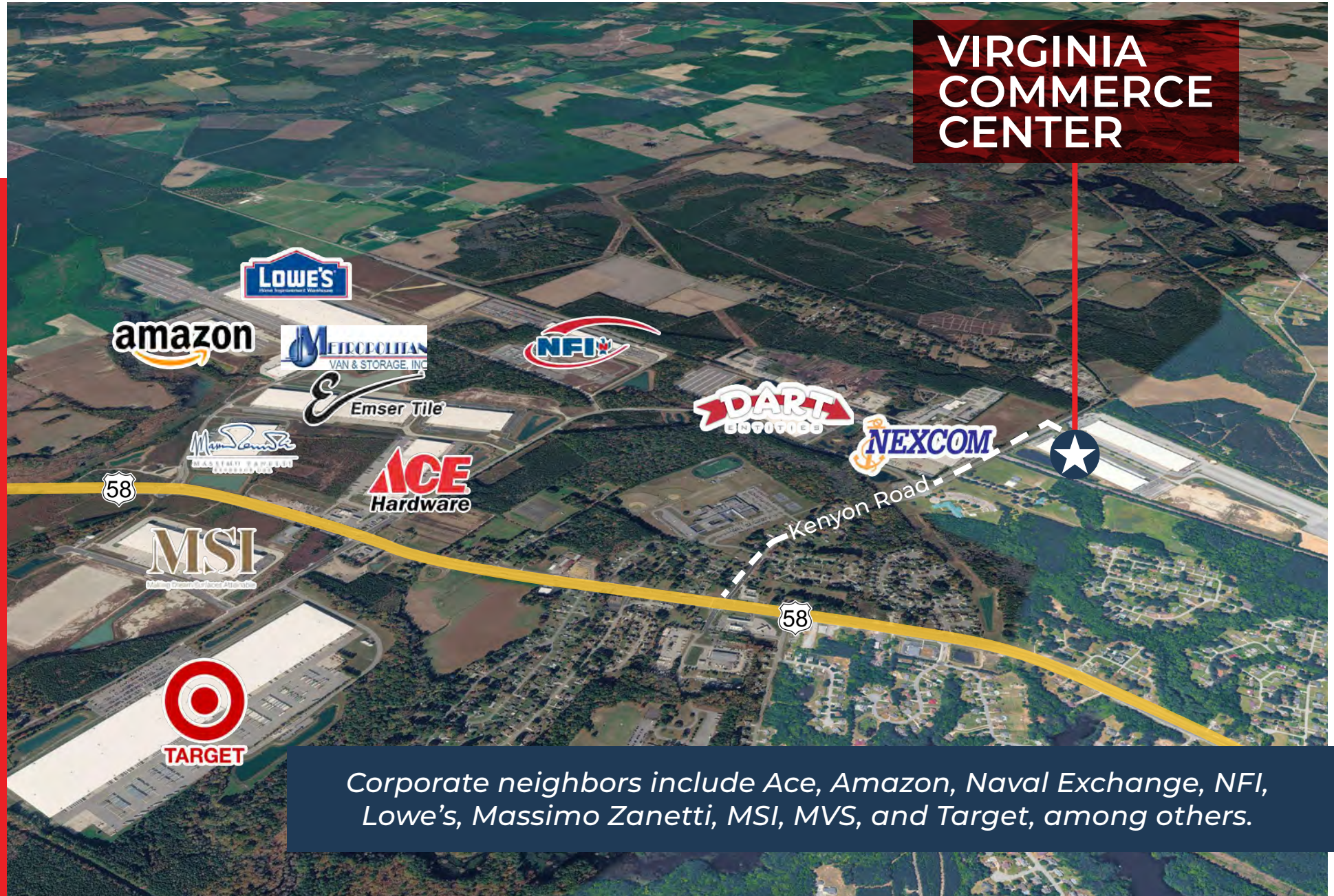
Prime Suffolk Location

Modern industrial site with efficient new building, adaptable to a broad range of users, for import, export, assembly, & manufacturing.



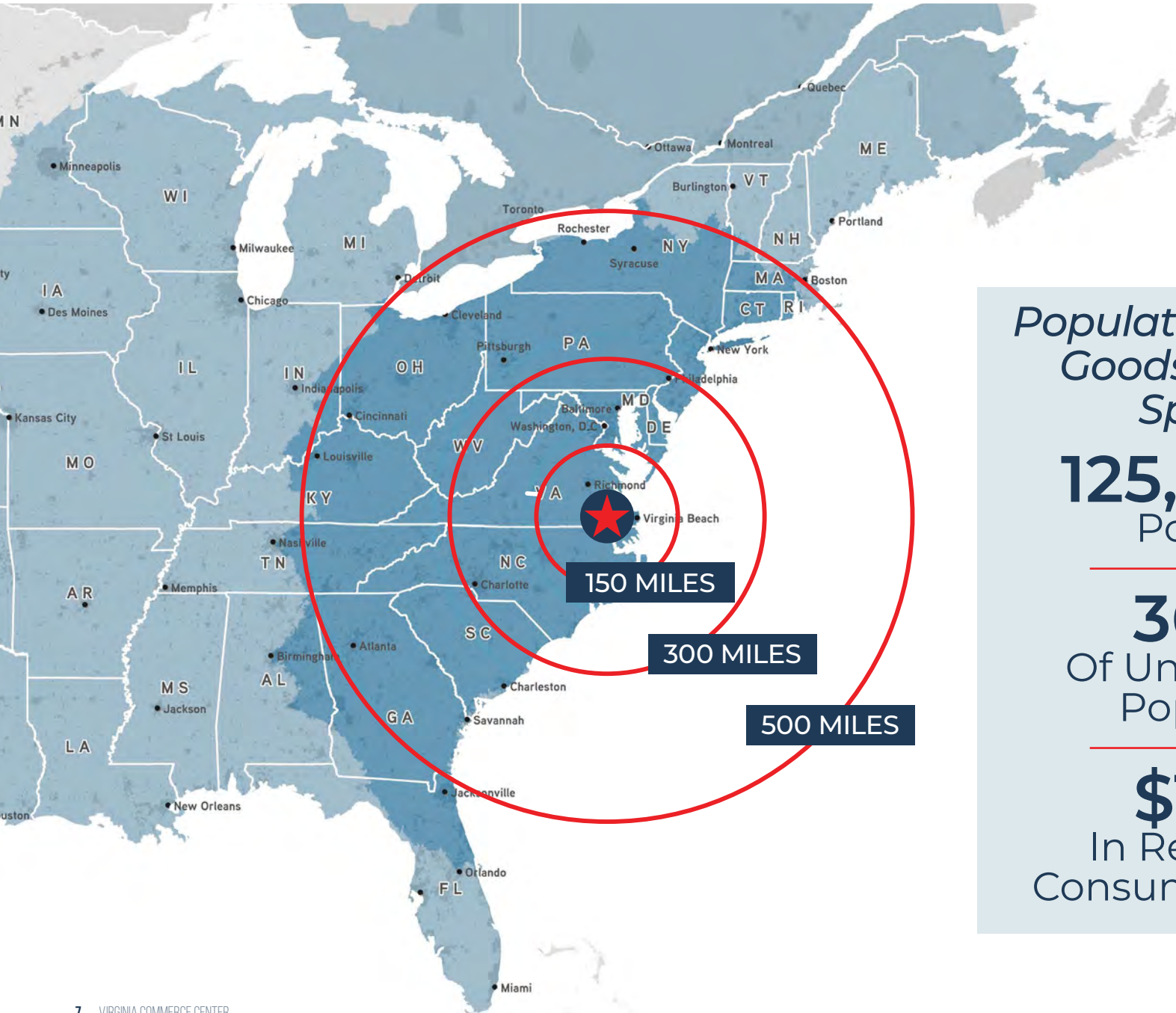
MARKET AERIAL

VIRGINIA COMMERCE CENTER



Corporate neighbors include Ace, Amazon, Naval Exchange, NFI, Lowe's, Massimo Zanetti, MSI, MVS, and Target, among others.

ONE-DAY TRUCK SERVICE MAP



One-Day Truck Drive

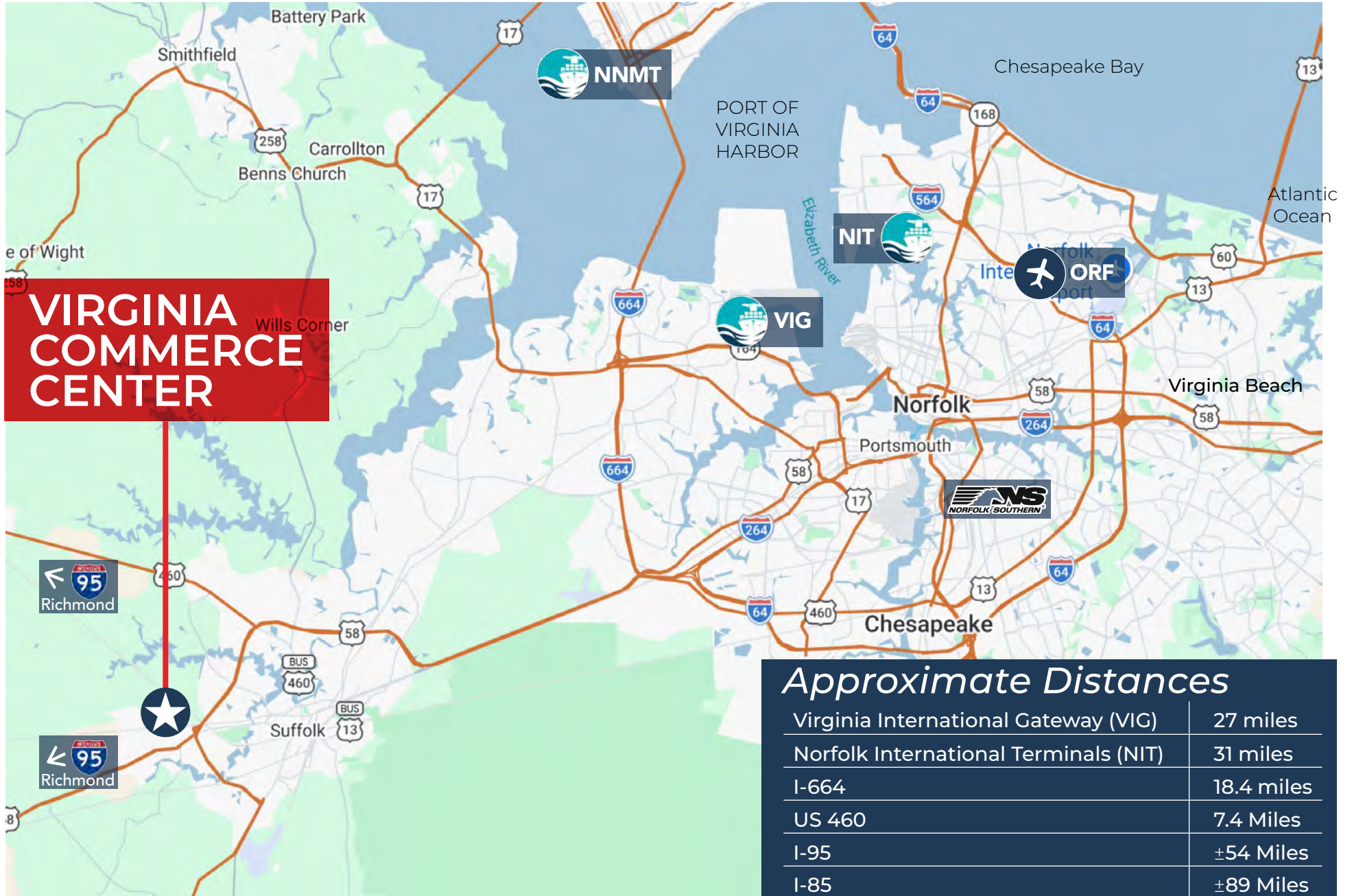
Population and Retail Goods Consumer Spending

125,662,625
Population

36.7%
Of United States
Population

\$1.67B
In Retail Goods
Consumer Spending

DRIVE TIME MAP



Port Of Virginia New Class A Warehouse **VIRGINIA COMMERCE CENTER**

301 Kenyon Road, Suffolk, VA 23434 | Building 200



Experience the Advantage of this Impeccable Property
Contact us today to learn more.

Lang Williams, SIOR
Executive Vice President
+1 757 679 9106
lang.williams@colliers.com

Ashton Williamson, MAI, SIOR
Executive Vice President
+1 757 288 3438
ashton.williamson@colliers.com

Chamie Burroughs
Senior Vice President
+1 757 478 9626
chamie.burroughs@colliers.com

This document has been prepared by Colliers International for advertising and general information only. Colliers International makes no guarantees, representations or warranties of any kind, expressed or implied, regarding the information including, but not limited to, warranties of content, accuracy and reliability. Any interested party should undertake their own inquiries as to the accuracy of the information. Colliers International excludes unequivocally all inferred or implied terms, conditions and warranties arising out of this document and excludes all liability for loss and damages arising there from. This publication is the copyrighted property of Colliers International and/or its licensor(s). ©2026. All rights reserved.

