

FOR SALE > LAND



300 N Curry Pike

BLOOMINGTON, IN



Property Highlights

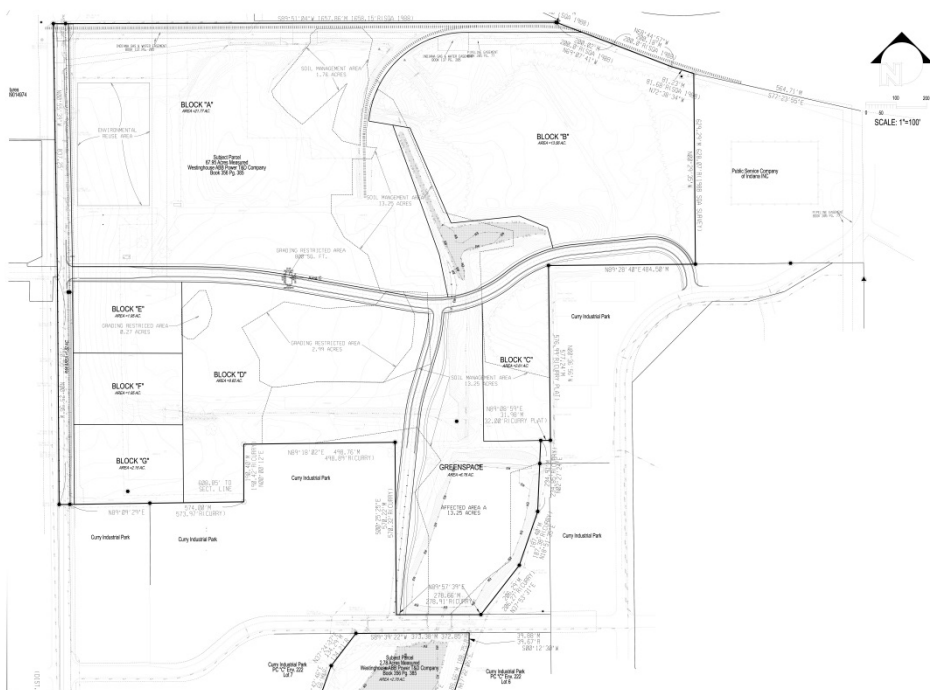
- > Zoned Industrial General (IG) in Monroe County
- > Located in Westside TIF district
- > Approved shovel ready site by the state of Indiana
- > Ideally situated on Curry Pike corridor near major industries, including Cook Medical and General Electric
- > Signalized intersection into site at Profile Parkway with potential for major E-W & N-S road extensions into or through the site
- > Seven day per week rail service available from the Indiana Railroad; operational turnout into site from industrial lead track is in place
- > Between \$40-\$50 million spent on environmental cleanup supervised by IDEM & US EPA. Additional information available upon request.



DAVE HARSTAD
812 822 1123
dave.harstad@colliers.com

COLLIERS INTERNATIONAL
116 ½ S College Ave, Suite 14
Bloomington, IN 47404
colliers.com

Aerial



Contact

DAVE HARSTAD

812 822 1123

dave.harstad@colliers.com

This document has been prepared by Colliers International for advertising and general information only. Colliers International makes no guarantees, representations or warranties of any kind, expressed or implied, regarding the information including, but not limited to, warranties of content, accuracy and reliability. Any interested party should undertake their own inquiries as to the accuracy of the information. Colliers International excludes unequivocally all inferred or implied terms, conditions and warranties arising out of this document and excludes all liability for loss and damages arising there from. This publication is the copyrighted property of Colliers International and/or its licensor(s). ©2015. All rights reserved.

