

FOR LEASE

2228
FIRST

SEATTLE, WA

PROPERTY FEATURES

- Home to Local 360, an on-site, sustainable restaurant renowned for its fresh ingredients that are sourced within a 360 mile radius of Seattle.
- Just 3 blocks from the waterfront/new waterfront park and Regrade Park; and will benefit from the upcoming Bell Street Park expansion that is part of the Waterfront Seattle renovation.
- Easy walking distance to downtown Seattle, South Lake Union, and Lower Queen Anne; and less than a half mile from the SLU Streetcar and Westlake Center bus and Link light rail tunnel.



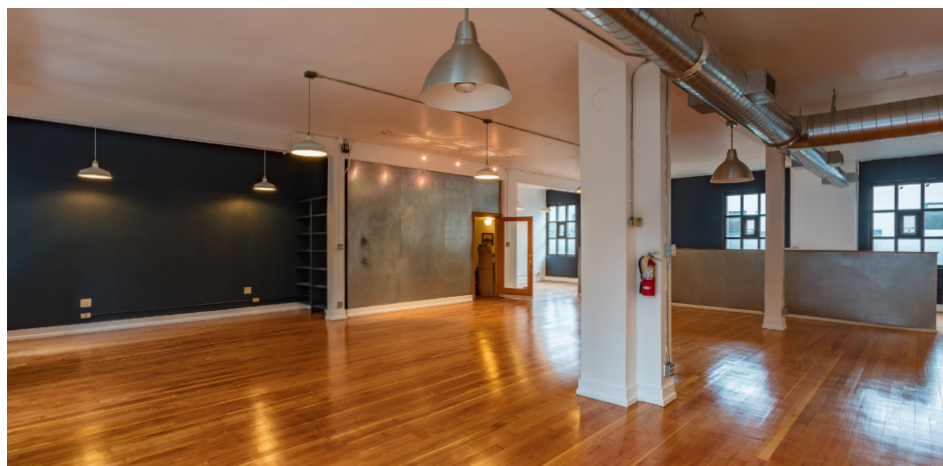
BEAUTIFUL, CREATIVE OFFICE SPACE AVAILABLE



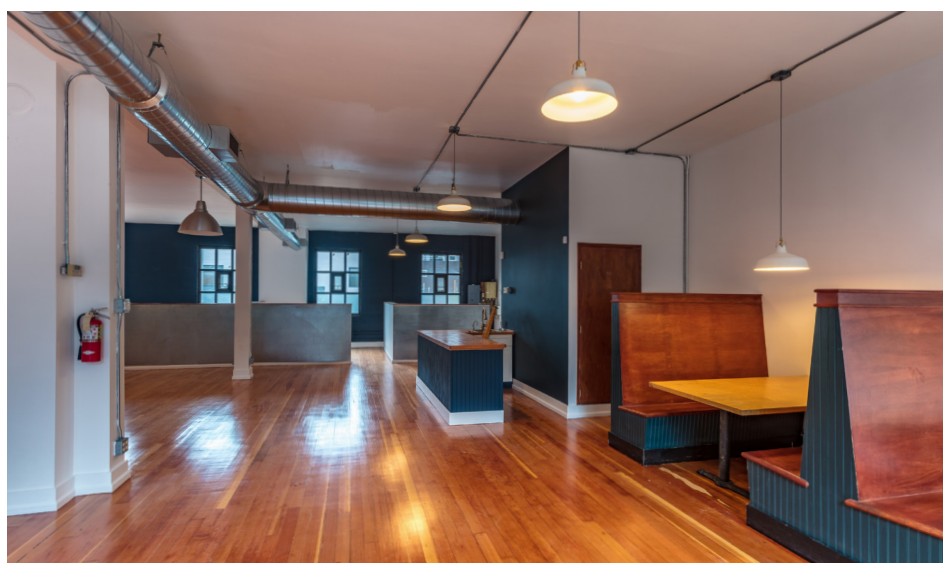
FOR LEASE

2228 FIRST

SEATTLE, WA



Suite #	Rentable Area	Rates
Suite 230	2,101	\$34.00/RSF FS



601 Union Street
Suite 5300
Seattle, WA, 98101
www.colliers.com

David Gurry
206 382 8549
Seattle, WA
david.gurry@colliers.com

Dan Dahl
206 382 8543
Seattle, WA
dan.dahl@colliers.com