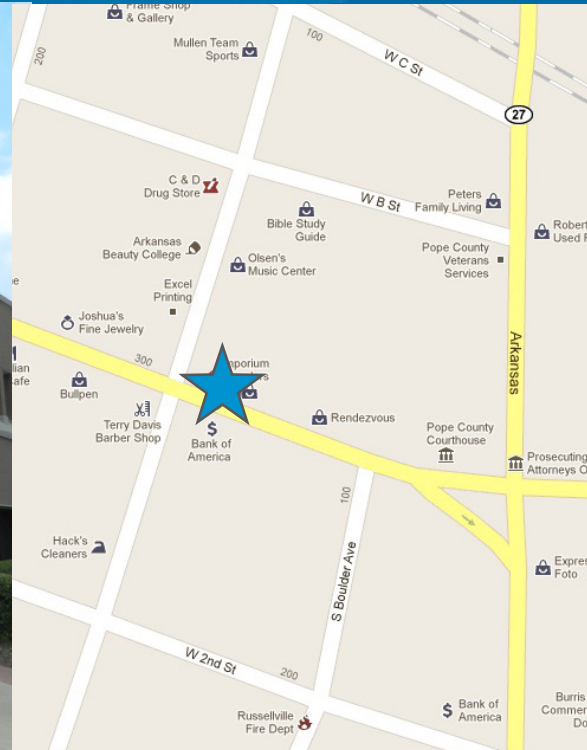


FOR LEASE

# Arvest Plaza

209 WEST MAIN STREET, RUSSELLVILLE, ARKANSAS 72801



## Availability and Rates

Lease rate: \$10.75/RSF (full service)

- Tenant Finish Allowance Negotiable
- Second Floor - Up to 11,000 SF

## Information & Amenities

- Free Surface Parking Available
- Competitive Rates
- Great Accessibility
- On-Site Banking
- Traffic Count: 21,000 VPD

## Contact Us

LISTING AGENT:

MARK BENTLEY, SIOR

501 372 6161 | EXT. 734

LITTLE ROCK, AR

[mark.bentley@colliers.com](mailto:mark.bentley@colliers.com)

PROPERTY MANAGER:

TROY SHELTON

501 372 6161 | 751

[troy.shelton@colliers.com](mailto:troy.shelton@colliers.com)

**COLLIERS INTERNATIONAL**

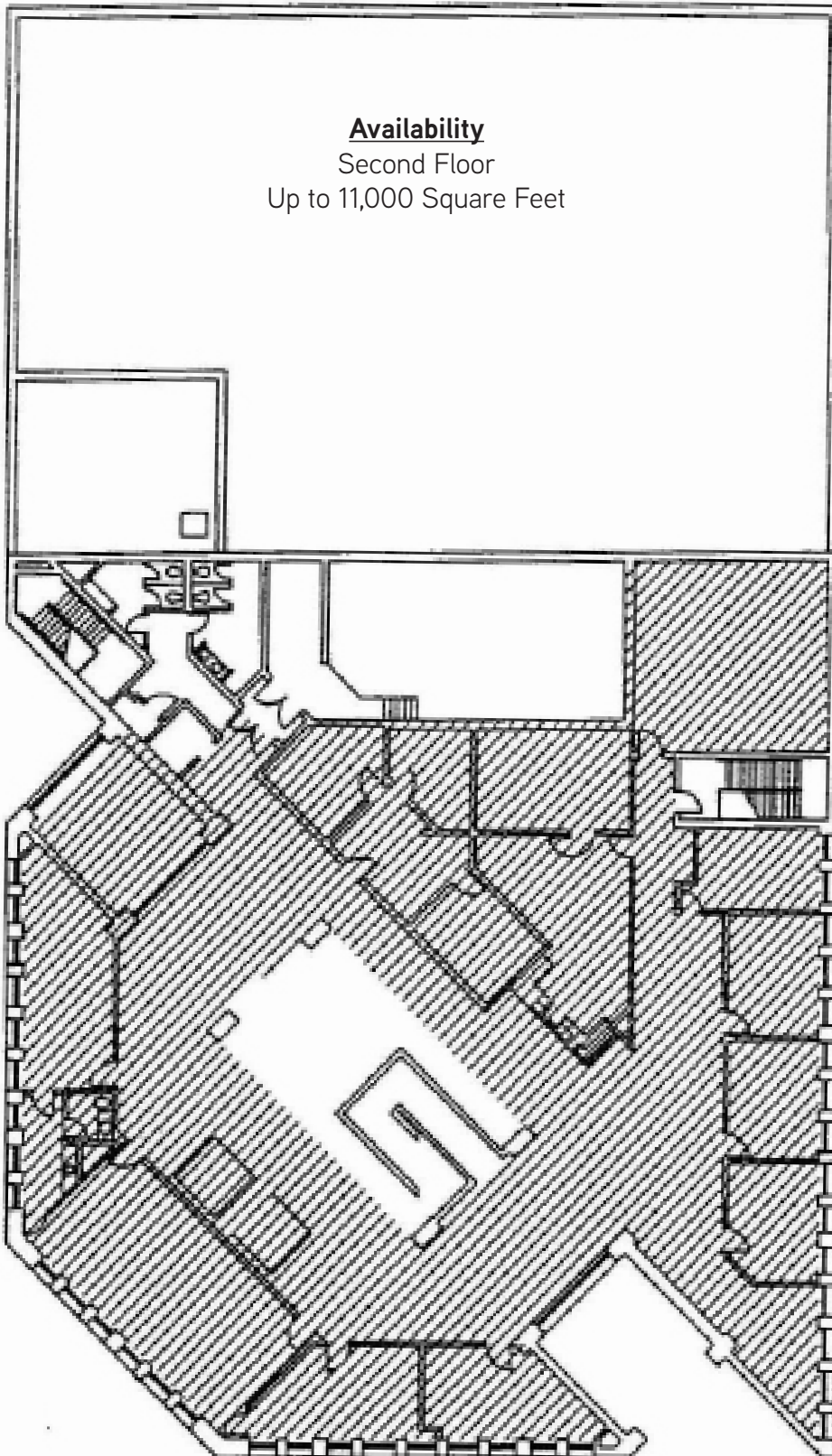
1 Allied Drive, Suite 1500

Little Rock, AR 72202

[www.colliers.com/arkansas](http://www.colliers.com/arkansas)

This document has been prepared by Colliers International for advertising and general information only. Colliers International makes no guarantees, representations or warranties of any kind, expressed or implied, regarding the information including, but not limited to, warranties of content, accuracy and reliability. Any interested party should undertake their own inquiries as to the accuracy of the information. Colliers International excludes unequivocally all inferred or implied terms, conditions and warranties arising out of this document and excludes all liability for loss and damages arising there from.

## Arvest Plaza > Floor Plan



### Contact Us

LISTING AGENT:

MARK BENTLEY, SIOR

501 372 6161 | EXT. 734

LITTLE ROCK, AR

[mark.bentley@colliers.com](mailto:mark.bentley@colliers.com)

PROPERTY MANAGER:

TROY SHELTON

501 372 6161 | 751

[troy.shelton@colliers.com](mailto:troy.shelton@colliers.com)

This document has been prepared by Colliers International for advertising and general information only. Colliers International makes no guarantees, representations or warranties of any kind, expressed or implied, regarding the information including, but not limited to, warranties of content, accuracy and reliability. Any interested party should undertake their own inquiries as to the accuracy of the information. Colliers International excludes unequivocally all inferred or implied terms, conditions and warranties arising out of this document and excludes all liability for loss and damages arising there from.

**Colliers**  
INTERNATIONAL