



214-218 Cambridge Street

# THE PUFFER'S BUILDING

Colliers  
INTERNATIONAL



214-218 Cambridge Street

# THE PUFFER'S BUILDING

## SPACE AVAILABLE

FLOOR 2  
8/1/19 1,541 SF

FLOOR 3  
6/1/19 1,524 SF

FLOOR 4  
6/1/19 1,512 SF

FLOOR 5  
8/1/19 1,512 SF

6,089 SF Total

## PROPERTY HIGHLIGHTS

- Historic Brick and Beam Building
- Great natural light
- Located on historic Cambridge Street
- Steps away from MBTA Red line and quick access to Storrow Drive, Route 1, and I-93

➤ 98 Walking Score



➤ 100 Transit Score







MASSACHUSETTS  
GENERAL HOSPITAL

HUB ON THE  
CAUSWAY

LIBERTY HOTEL

CHARLES/MGH  
STATION

CAMBRIDGE STREET

BOWDOIN  
STATION

214-218 Cambridge Street  
**THE PUFFER'S  
BUILDING**

## NEARBY AMENITIES



au bon pain



the Tip Tap Room



Fin's SUSHI & GRILL



Tatte  
BAKERY & CAFE



King & I



HULUN BEIR  
MONGOLIAN FOOD

## AMENITIES



One block from the Red Line  
- Charles/MGH station  
(8 minutes to South Station)



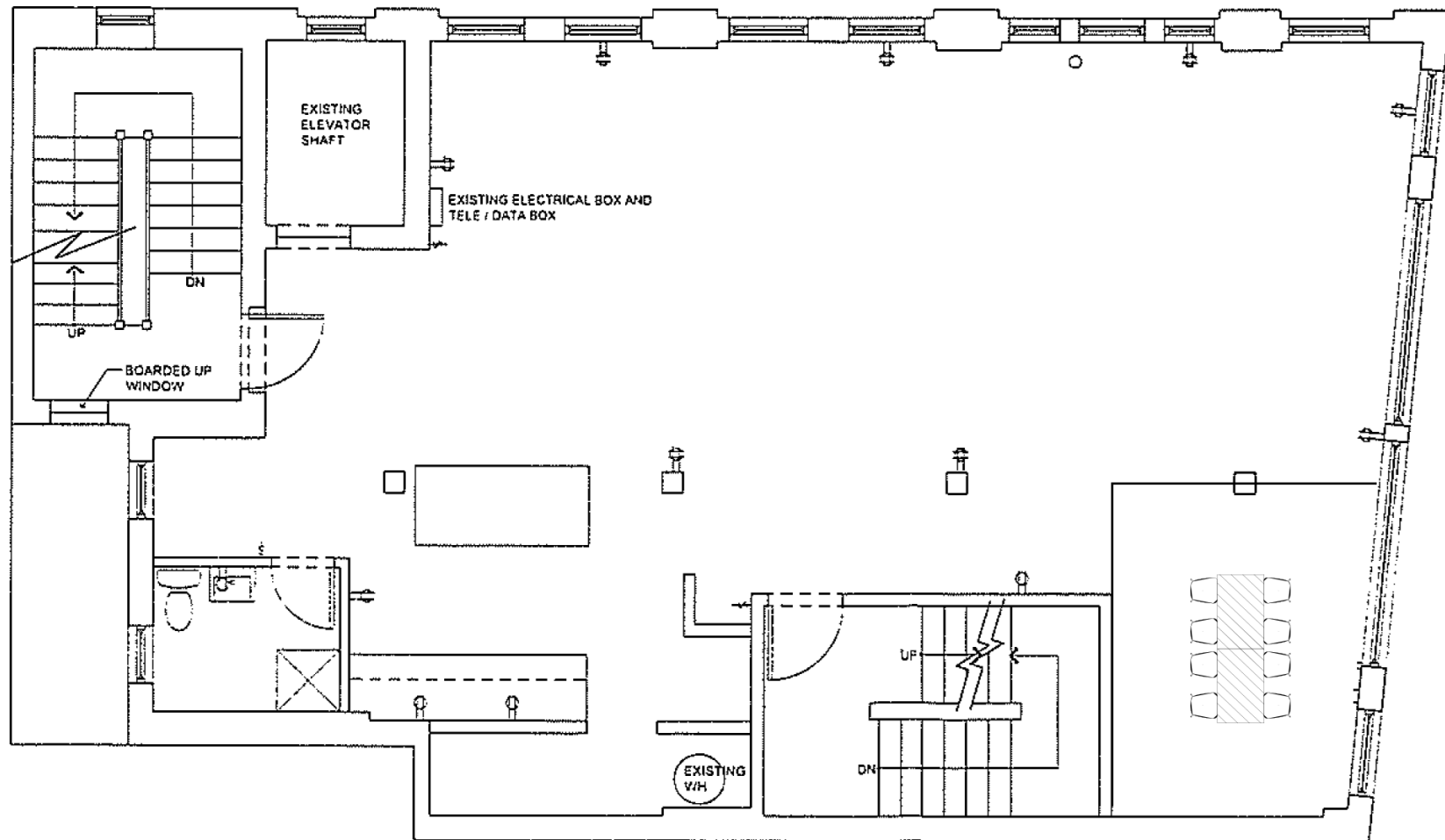
One block from Storrow  
Drive (provides quick access  
to Route 93 and Mass Pike)



10 minute walk to  
North Station (provides  
access to MBTA trains)



# SAMPLE FLOOR PLAN



## FOR MORE INFORMATION:

Ryan Healy  
617 330 8017  
ryan.healy@colliers.com

Joe Capuano  
617 330 8088  
joseph.capuano@colliers.com

**Colliers**  
INTERNATIONAL

**Colliers International**  
160 Federal Street  
Boston, MA 02110  
[www.colliers.com/boston](http://www.colliers.com/boston)

This document has been prepared by Colliers International for advertising and general information only. Colliers International makes no guarantees, representations or warranties of any kind, expressed or implied, regarding the information including, but not limited to, warranties of content, accuracy and reliability. Any interested party should undertake their own inquiries as to the accuracy of the information. Colliers International excludes unequivocally all inferred or implied terms, conditions and warranties arising out of this document and excludes all liability for loss and damages arising there from. This publication is the copyrighted property of Colliers International and/or its licensor(s). ©2018 All rights reserved.