

FOR LEASE > MEDICAL SPACE



Century Health Building

1901 CENTURY AVE S, WOODBURY, MN 55125



Amenities

- > New Development: 24,000 sf two-story medical office building
- > Excellent location just blocks from Woodwinds Hospital - a 2013 "100 Top Hospitals" Everest Award recipient
- > Build to suit Class A finishes
- > On-building and monument signage available
- > 5 per 1,000 parking available
- > Easy access to I-494, I-694 and I-94
- > Close proximity to restaurants and hotels

Proposed medical building in excellent location just blocks from Woodwinds Hospital. Easy access to I-494.

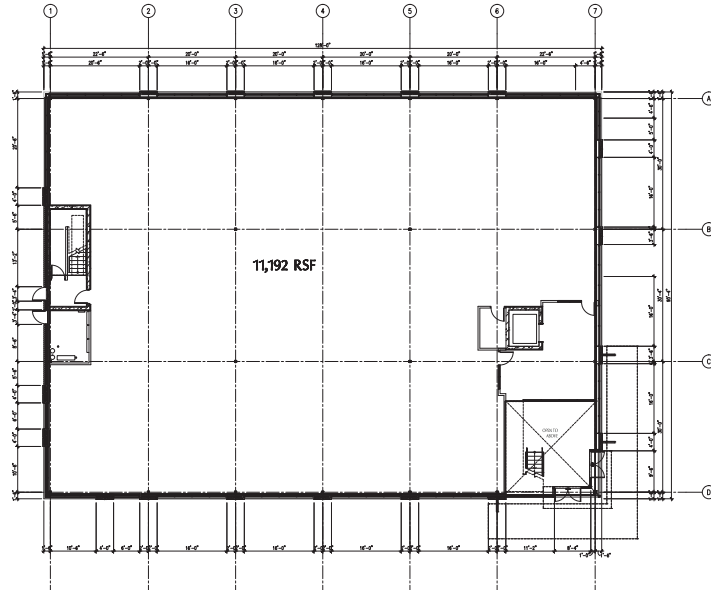
COLLIERS INTERNATIONAL
4350 Baker Road, Suite 400
Minnetonka, MN 55343
www.colliers.com

KEVIN O'NEILL, SIOR
952 897 7724
kevin.oneill@colliers.com

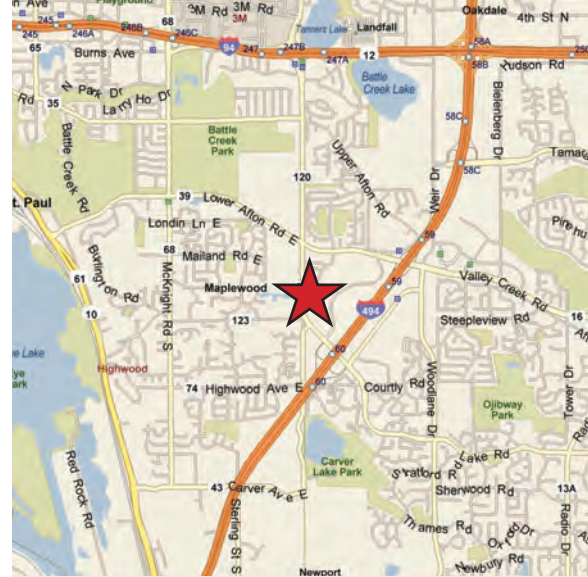
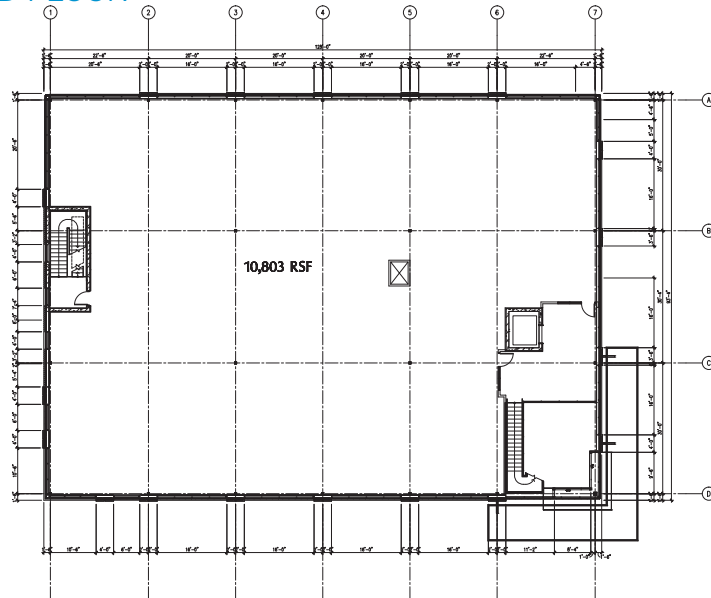
ERIC RAPP
952 837 3060
eric.rapp@colliers.com

Century Health Building > Floor Plans

FIRST FLOOR



SECOND FLOOR



Contact Us

KEVIN O'NEILL, SIOR
952 897 7724
kevin.oneill@colliers.com

ERIC RAPP
952 837 3060
eric.rapp@colliers.com

COLLIERS INTERNATIONAL
4350 Baker Road, Suite 400
Minnetonka, MN 55343
www.colliers.com



PROPERTY FACT SHEET

Century Health Building



PROPERTY ADDRESS:

1901 Century Ave S
Woodbury, MN 55125

CURRENTLY AVAILABLE:

Up to 24,000 square feet

DIVISIBLE TO:

5,000 square feet

PARKING:

5/1,000 available

NET RENTAL RATES:

\$21.50 per square foot

TI ALLOWANCE:

\$40.00 per foot

AMENITIES:

- Excellent location just blocks from Woodwinds Health Campus & Hospital - a 2013 "100 Top Hospitals" Everest Award recipient
- Build to suit Class A finishes
- On-building and monument signage available
- Easy access to I-494, I-694 and I-94
- Close proximity to restaurants and hotels



For Leasing Information, Contact:

KEVIN O'NEILL, SIOR
952 897 7724
kevin.oneill@colliers.com

ERIC RAPP
952 837 3060
eric.rapp@colliers.com

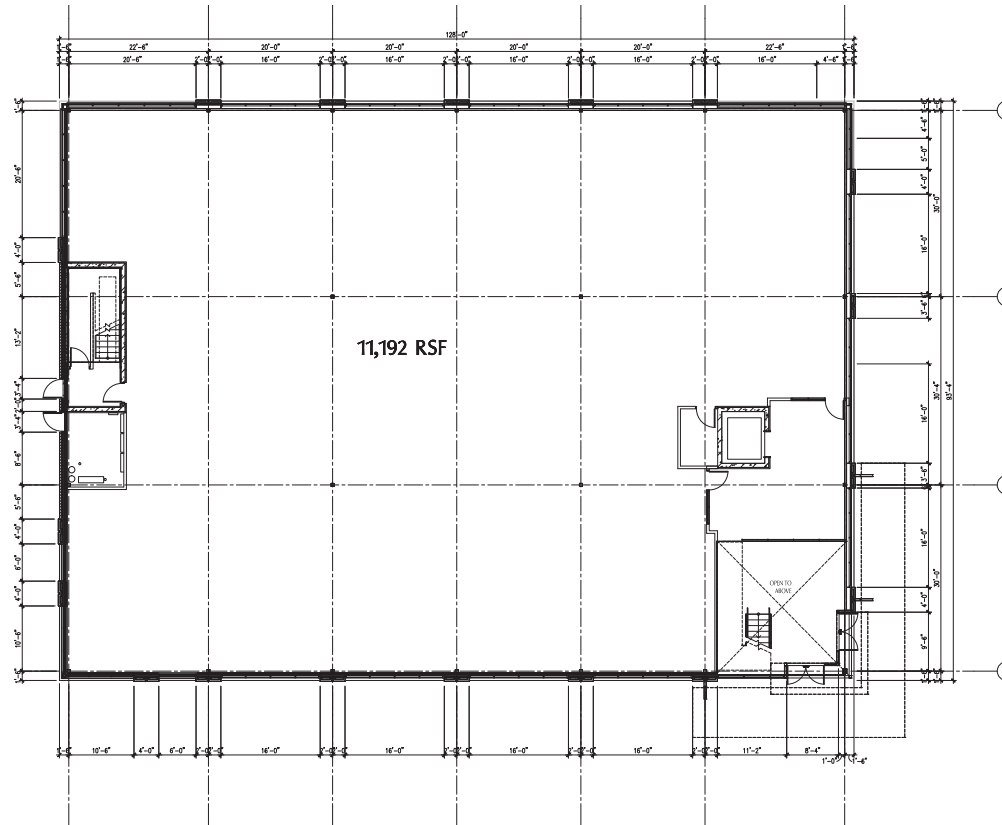
COLLIERS INTERNATIONAL
4350 Baker Road, Suite 400
Minnetonka, MN 55343

www.colliers.com

Century Health Building

1901 CENTURY AVE S, WOODBURY MN

FIRST FLOOR



1 FIRST FLOOR PLAN
A200 1/8" = 1'-0"

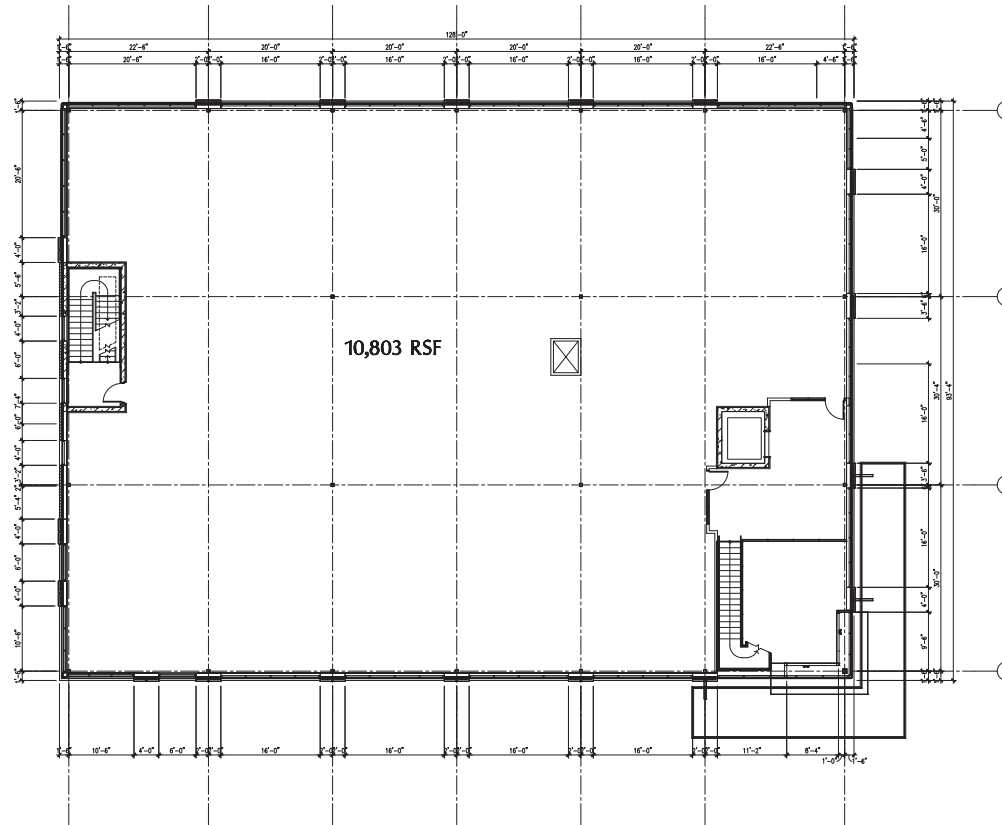
KEVIN O'NEILL
952 897 7724
kevin.oneill@colliers.com

ERIC RAPP
952 837 3060
eric.rapp@colliers.com

Century Health Building

1901 CENTURY AVE S, WOODBURY MN

SECOND FLOOR



1 SECOND FLOOR PLAN
1/8" = 1'-0"

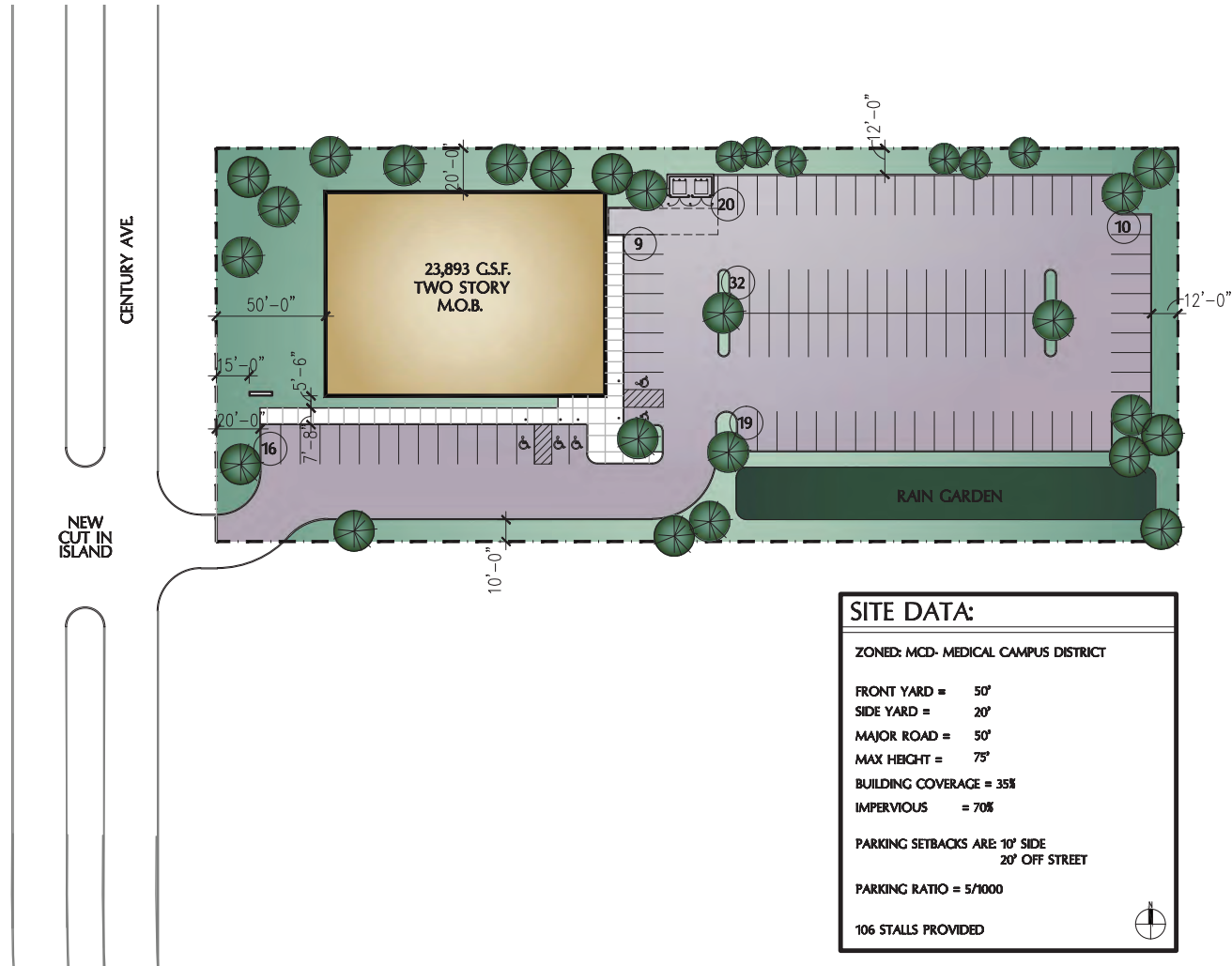
KEVIN O'NEILL
952 897 7724
kevin.oneill@colliers.com

ERIC RAPP
952 837 3060
eric.rapp@colliers.com

Century Health Building

1901 CENTURY AVE S, WOODBURY MN

SITE PLAN



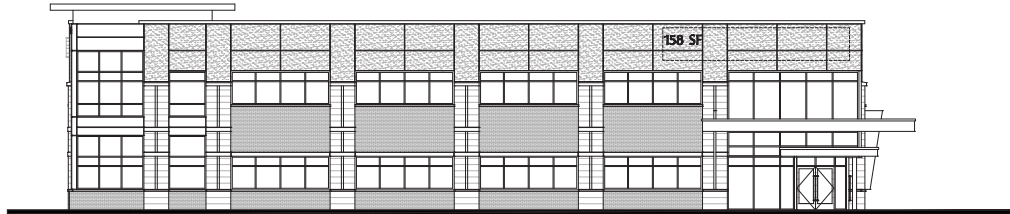
KEVIN O'NEILL
952 897 7724
kevin.oneill@colliers.com

ERIC RAPP
952 837 3060
eric.rapp@colliers.com

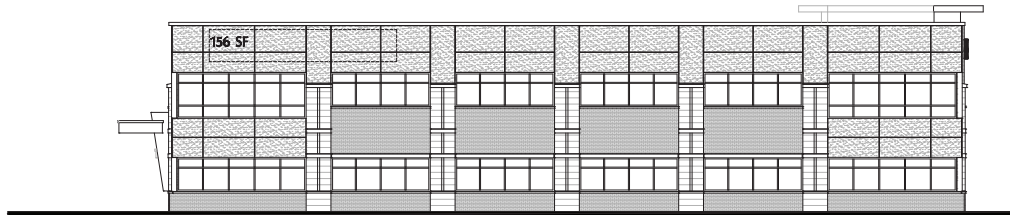
Century Health Building

1901 CENTURY AVE S, WOODBURY MN

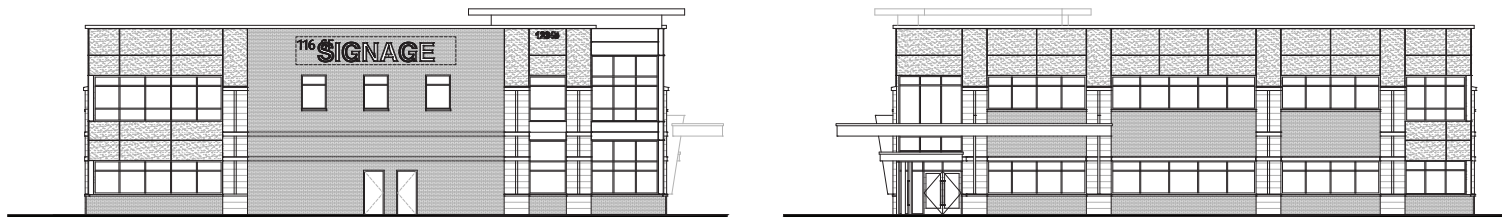
ELEVATIONS



1 SOUTH ELEVATION
A300 1/8" = 1'-0"



2 NORTH ELEVATION
A300 1/8" = 1'-0"



KEVIN O'NEILL
952 897 7724
kevin.oneill@colliers.com

ERIC RAPP
952 837 3060
eric.rapp@colliers.com