



Office Building With Beautiful Views of the Sierras



FOR LEASE > ISBELL OFFICE SUITES

639 Isbell Road
Reno, Nevada

For more information,
please contact:

Reno Office Services

MELISSA MOLYNEAUX, SIOR, CCIM

Senior Vice President
Executive Managing Director
+1 775 823 4674 DIRECT
+1 775 762 7990 CELL
Melissa.Molyneaux@colliers.com

LONDON GONZALEZ

Senior Associate
+1 775 823 4663 DIRECT
+1 775 741 6397 CELL
Landon.Gonzalez@colliers.com

Lease Rate: **\$1.55/SF Full Service**

Available Space: **Suite 330: 3,122± SF***
Suite 360: 1,654± SF*
Suite 420: 2,550± SF (Available 5-1-19)
***Suites can be combined for a total of 4,776± SF**

Building Features

- > 38,456 SF Office building - Built in 1996 and remodeled 2007
- > Three-story, Class A, Office Building in the Central Submarket
- > Four parking spaces per 1,000 SF with ample street parking available
- > Well maintained property with a fresh contemporary look
- > Ideal for professional service firms and back office users
- > 5 minutes from Downtown Reno and The Reno/Tahoe Airport
- > Walking distance from over 10 restaurants
- > Well located in central Reno with easy access to all areas of town and close to many amenities
- > Landlord is willing to provide tenant improvements. All suites are currently built-out and ready
- > Beautiful landscaping in front and back

Suite 330: 3,122± SF

Suite is in move-in ready condition with a mix of private office, kitchen, server room, reception and storage. *Suites 330 and 360 can be combined for a total of 4,776± square feet.

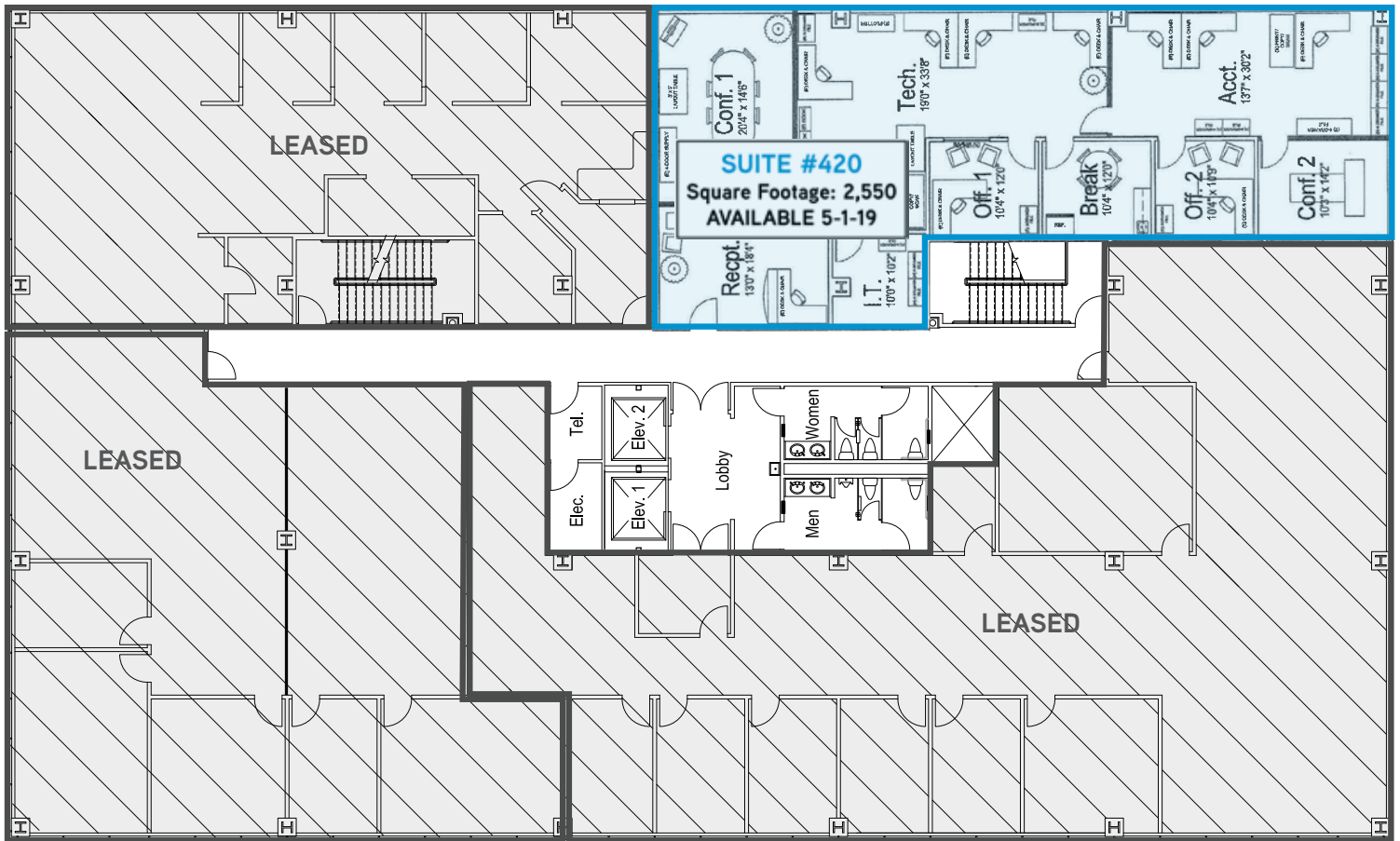
Suite 360: 1,654± SF

Suite is in move-in ready condition with four offices, conference, IT/storage and work area. *Suites 330 and 360 can be combined for a total of 4,776± square feet.



Suite 420: 2,550± SF

Great office suite available with nice mix of offices and open space. Outstanding views from the 4th floor! **Available 5-1-19.**



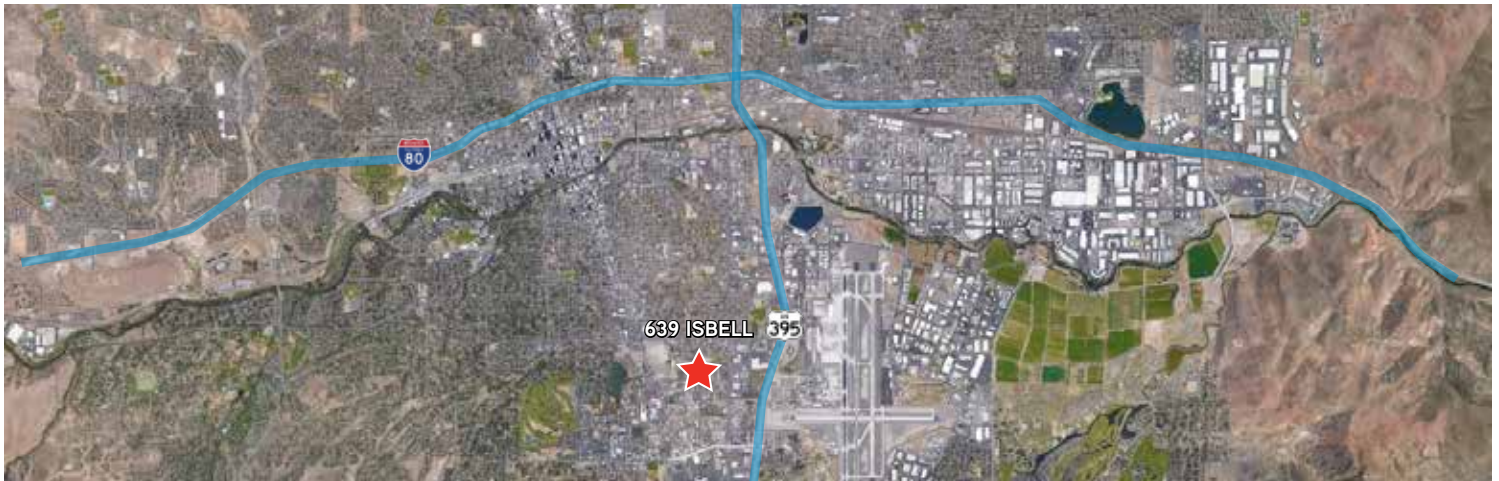
Suite Photos



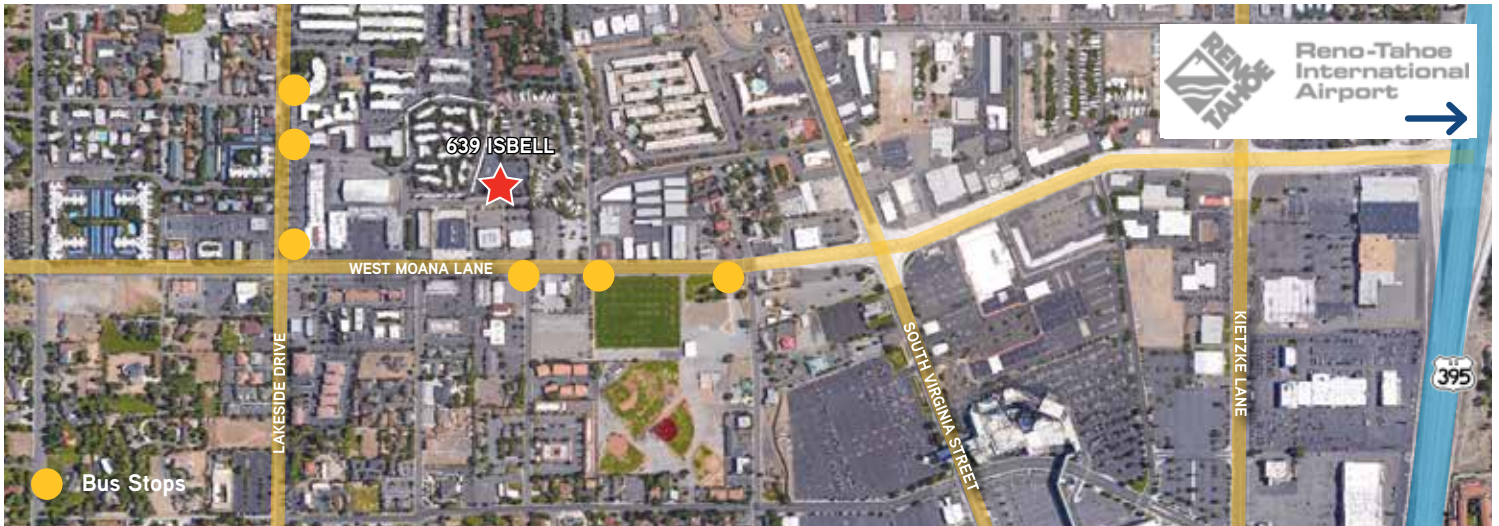
Property Description

Isbell Office Suites offer: outdoor eating area with no traffic noise. Building is conveniently located in close proximity to the following amenities: *Restaurants* - Kinder's Meats, Outback Steakhouse, Palais de Jade, Josef's Vienna Bakery, Deli Towne, Swill Coffee and Wine, Zozo's; *Daycare Centers* - Sunflower preschool, Creative World Children's Academy, Carousel Kids Learning Center; *Hotels & Casinos* - The Peppermill, Atlantis Casino Resort, and other *business* - Moana Nursery, Ben's Fine Wine and Spirits, Shell Gas Station, Farmers Insurance; *recreational*, Virginia Lake Park

Regional Aerial



Local Aerial With Bus Stops Shown



For more information,
please contact:

Reno Office Services

MELISSA MOLYNEAUX, SIOR, CCIM
Senior Vice President
Executive Managing Director
+1 775 823 4674 DIRECT
+1 775 762 7990 CELL
Melissa.Molyneaux@colliers.com

LANDON GONZALEZ
Senior Associate
+1 775 823 4663 DIRECT
+1 775 741 6397 CELL
Landon.Gonzalez@colliers.com

This document has been prepared by Colliers International for advertising and general information only. Colliers International makes no guarantees, representations or warranties of any kind, expressed or implied, regarding the information including, but not limited to, warranties of content, accuracy and reliability. Any interested party should undertake their own inquiries as to the accuracy of the information. Colliers International excludes unequivocally all inferred or implied terms, conditions and warranties arising out of this document and excludes all liability for loss and damages arising there from. This publication is the copyrighted property of Colliers International and/or its licensor(s). ©2018. All rights reserved.

Colliers International
5520 Kietzke Lane, Suite 300
Reno, Nevada 89511
P: +1 775.823.9666 | F: +1 775.823.4699
www.colliers.com/reno

