



FOR LEASE > 2730 LONE TREE WAY, ANTIOCH, CALIFORNIA 94596

# OFFICE / MEDICAL SPACE



## PROPERTY HIGHLIGHTS

### > AVAILABLE SPACE

Suite 1      ±2,039 RSF  
Suite 5      ±800 RSF

- > Immediately available, move-in condition
- > Ground floor with signage along Lone Tree Way available

- > Numerous restaurants / retail amenities nearby
- > Excellent glass line
- > Immediate access to Highway 4 via Lone Tree Way
- > Ample parking

## CONTACT INFORMATION

CURT D. SCHEVE Sior  
925 279 5593  
curt.scheve@colliers.com  
CA Lic. 00916122

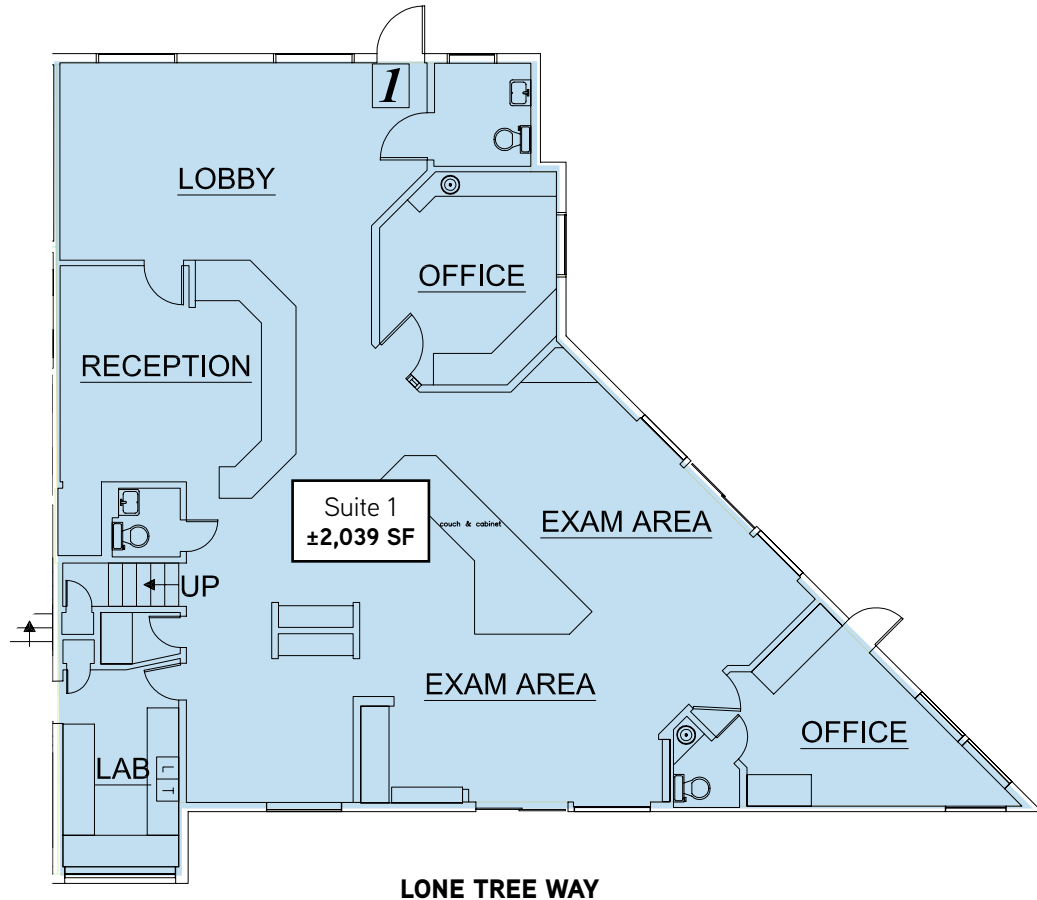
BILL HILLIS Sior  
925 279 5578  
bill.hillis@colliers.com  
CA Lic. 01262007

**COLLIERS INTERNATIONAL**  
1850 Mt Diablo Boulevard, Suite 200  
Walnut Creek, California 94596  
[colliers.com/walnutcreek](http://colliers.com/walnutcreek)

FOR LEASE > 2730 LONE TREE WAY, ANTIOCH, CALIFORNIA 94596

# OFFICE / MEDICAL SPACE

SUITE 1 ±2,039 RSF



## CONTACT INFORMATION



CURT D. SCHEVE SIOR  
925 279 5593  
curt.scheve@colliers.com  
CA Lic. 00916122

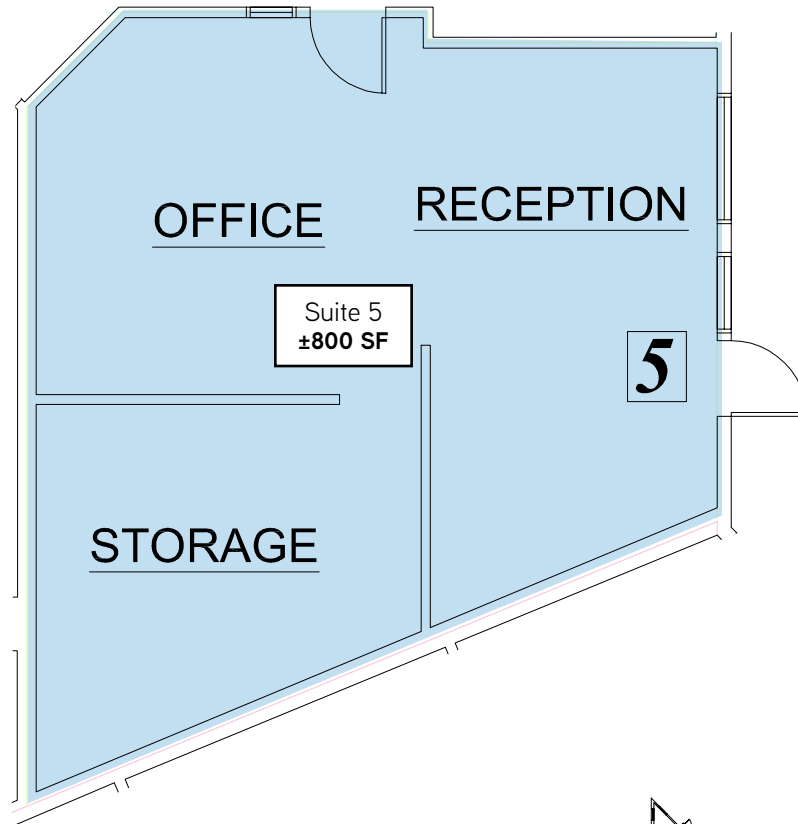
BILL HILLIS SIOR  
925 279 5578  
bill.hillis@colliers.com  
CA Lic. 01262007

COLLIERS INTERNATIONAL  
1850 Mt Diablo Boulevard, Suite 200  
Walnut Creek, California 94596  
colliers.com/walnutcreek

FOR LEASE > 2730 LONE TREE WAY, ANTIOCH, CALIFORNIA 94596

# OFFICE / MEDICAL SPACE

SUITE 5 ±800 RSF



## CONTACT INFORMATION



CURT D. SCHEVE SIOR  
925 279 5593  
curt.scheve@colliers.com  
CA Lic. 00916122

BILL HILLIS SIOR  
925 279 5578  
bill.hillis@colliers.com  
CA Lic. 01262007

COLLIERS INTERNATIONAL  
1850 Mt Diablo Boulevard, Suite 200  
Walnut Creek, California 94596  
[colliers.com/walnutcreek](http://colliers.com/walnutcreek)