

# Livonia Executive Center

## 31478 Industrial Rd, Livonia, MI 48150



Listing ID: 29999489  
Status: Active  
Property Type: Office For Lease  
Office Type: Business Park, Executive Suites  
Contiguous Space: 5,500 - 6,530 SF  
Total Available: 12,030 SF  
Lease Rate: \$8 PSF (Annual)  
Base Monthly Rent: \$3,666 - 4,353  
Lease Type: NNN  
Ceiling: 16 ft.



### Overview/Comments

Outstanding office/flex spaces located in the Livonia Executive Center with easy access to I-96 and I-275. Very clean, attractive facility that has been recently refurbished. Full sized tinted windows surround over half the perimeter. Large open collaboration area allows for flexible floor plan.

Suite 300 has two large offices, two refurbished restrooms, with a kitchenette located alongside a copier room/storage area, and a phone/server room.

Both Suites include 400 AMP power, Alarm, 25 designated parking spaces and a new roof was installed in 2015.

Beautiful landscaping and mature trees surround the facility.

### More Information Online

<http://www.cpix.net/listing/29999489>

### QR Code

Scan this image with your mobile device:



### General Information

Taxing Authority:	City of Livonia	Class of Space:	Class C
Tax ID/APN:	105 02 0002 003	Gross Building Area:	23,726 SF
Office Type:	Business Park, Executive Suites, Flex Space, Office Building	Building/Unit Size (RSF):	5,500 SF
Building Name:	Livonia Executive Park	Usable Size (USF):	5,500 SF

### Available Space

Suite/Unit Number:	100	Space Type:	Relet
Suite Floor/Level:	1st Floor	Date Available:	12/07/2017
Space Available:	6,530 SF	Lease Term (Months):	60 Months
Minimum Divisible:	6,530 SF	Lease Rate:	\$8 PSF (Annual)
Maximum Contiguous:	6,530 SF	Lease Type:	NNN

### Available Space

Suite/Unit Number:	300	Date Available:	09/07/2016
Suite Floor/Level:	1st Floor	Lease Term (Months):	60 Months
Space Available:	5,500 SF	Lease Rate:	\$8 PSF (Annual)
Minimum Divisible:	5,500 SF	Lease Type:	NNN
Maximum Contiguous:	5,500 SF	Parking Spaces:	25
Space Type:	Relet		

### Area & Location

Highway Access: Location is just off I-96 at the Merriman Road Exit  
Airports: Detroit Metro Wayne County International  
Airport-24 minutes

## Building Related

Number of Stories:	1	Parking Type:	Surface
Year Built:	1988	Total Parking Spaces:	25
Roof Type:	Flat	Ceiling Height:	16

## Land Related

Legal Description PT OF LOT 2 LIVONIA EXECUTIVE PARK NO 1 PT OF NE 1/4 SEC 27 T1S 9E DESC AS COMM AT NE COR SEC 27 S 02D 33M 19S E 874.15 FT TH S 88D 2M 01S W 495.0 FT TO POB TH S 88D 12M 01S W 191.80 FT TH N 01D 47M 59S W 365.96 FT TH N 88D 12M 01S E 268.98 FT TH S 02D 33M 19S E 10.0 FT TH S 88D 12M 01S W 82.0 FT TH S 02D 33M 19S E 156.01 FT TO POB 1.986 AC SUBJECT TO EASEMENTS OF RECORD

## Location

Address:	31478 Industrial Rd, Livonia, MI 48150	MSA:	Detroit-Warren-Dearborn
County:	Wayne	Submarket:	Southern I-275 Corridor



## Property Images



Livonia Executive Center



31478 Industrial-Suite 300 Exterior of Suite 300



31478 Industrial-Suite 300 Interior



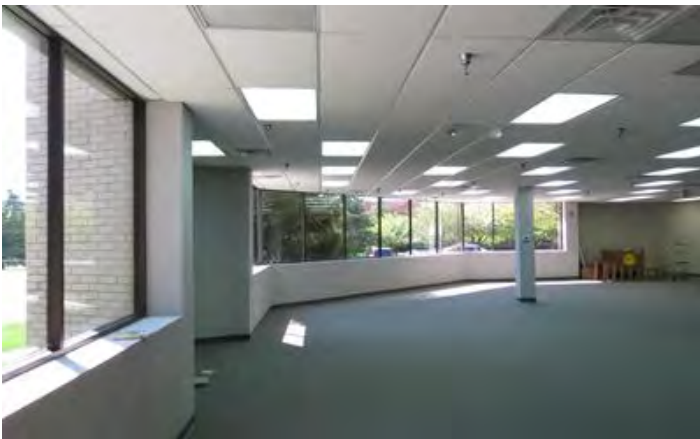
31478 Industrial-Suite 100 Exterior



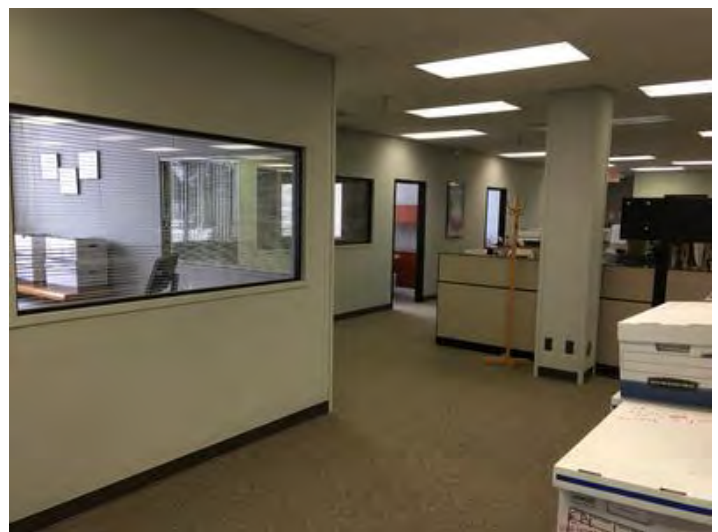
31478 Industrial-Suite 300 Interior 2



31478 Industrial-Suite 100 Interior 1



31478 Industrial-Suite 300 Interior 3

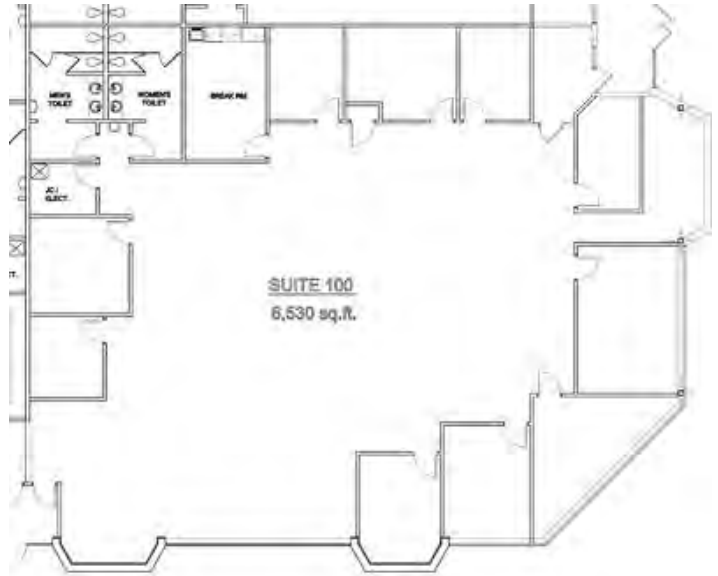


31478 Industrial-Suite 100 Interior 2





31478 Industrial-Suite 100 Kitchenette



Suite 100 Floor Plan



Suite 300 Floor Plan

## Property Contacts



**James H. Chaconas**

Colliers International  
734-994-3100 [O]  
jim.chaconas@colliers.com

FOR LEASE > OFFICE

# LIVONIA EXECUTIVE CENTER

31478 INDUSTRIAL ROAD | LIVONIA, MI



## > FLOOR PLAN



**GERALD O'CONNOR**

PHONE 734 994 3100 EXT 1894

EMAIL [gerald.o'connor@colliers.com](mailto:gerald.o'connor@colliers.com)



**PAUL GODEK**

PHONE 734 994 3100 EXT 1892

EMAIL [paul.godek.last@colliers.com](mailto:paul.godek.last@colliers.com)