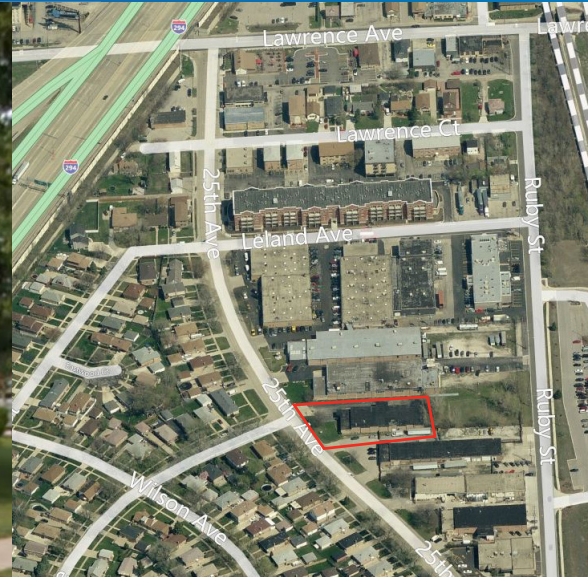


FOR SALE > 10,000 SQUARE FEET

# 4625 N. 25th Avenue

SCHILLER PARK, IL



## About This Property

- > Available: 10,000 SF
- > Office: +/- 3,000 SF
- > Loading: 1 exterior dock; 1 drive-in door
- > Clear Height: 14'
- > Car Parking: 18 spaces
- > Power: 200 amps / 240 volts
- > Land Area: .46 acres
- > Sale Price: \$695,000
- > Well maintained and very clean building
- > Recent office addition and remodel
- > New roof and windows in 2008

## Contact Us

JOHN D'ORAZIO

847 384 2823

[john.dorazio@colliers.com](mailto:john.dorazio@colliers.com)

No warranty or representation is made to the accuracy of the foregoing information.  
Terms of sale or lease and availability are subject to change or withdrawal without notice.

**COLLIERS INTERNATIONAL**  
6250 N. River Road, Suite 11-100  
Rosemont, IL 60018  
[www.colliers.com](http://www.colliers.com)

# 4625 N. 25th Avenue > Survey

