



CENTRAL PORT LOGISTICS CENTER AT ROCKINGHAM

300 LANDMARK BOULEVARD EAST
SAVANNAH, GA 31405

Colliers

CAPITAL
DEVELOPMENT PARTNERS

VETERANS PARKWAY (23,700 VPI)

FOR LEASE

**TWO ±150,000 SF CLASS A FLEX WAREHOUSES
WITH HIGHWAY FRONTAGE - AVAILABLE NOW**

Excellent Highway Visibility & Easy Access to Interstates (95, 16, 516)



New Veterans Parkway Interchange

±9 AC AVAILABLE FOR OUTDOOR STORAGE

Flexible Multi-tenant Units Ranging from ±15,000 - 120,000 SF

ROWAN / CREATIVE INNOVATIONS AWESUNG

Plastic Express

BUILDING 2

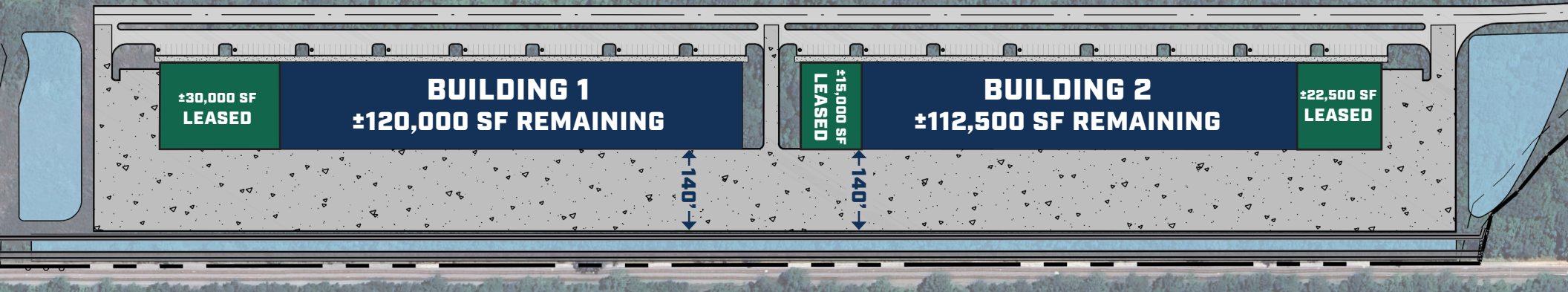
BUILDING 1

VETERANS PARKWAY (23,700 VPD)

OUTDOOR STORAGE



VETERANS PARKWAY (23,700 VPD)



Building 1

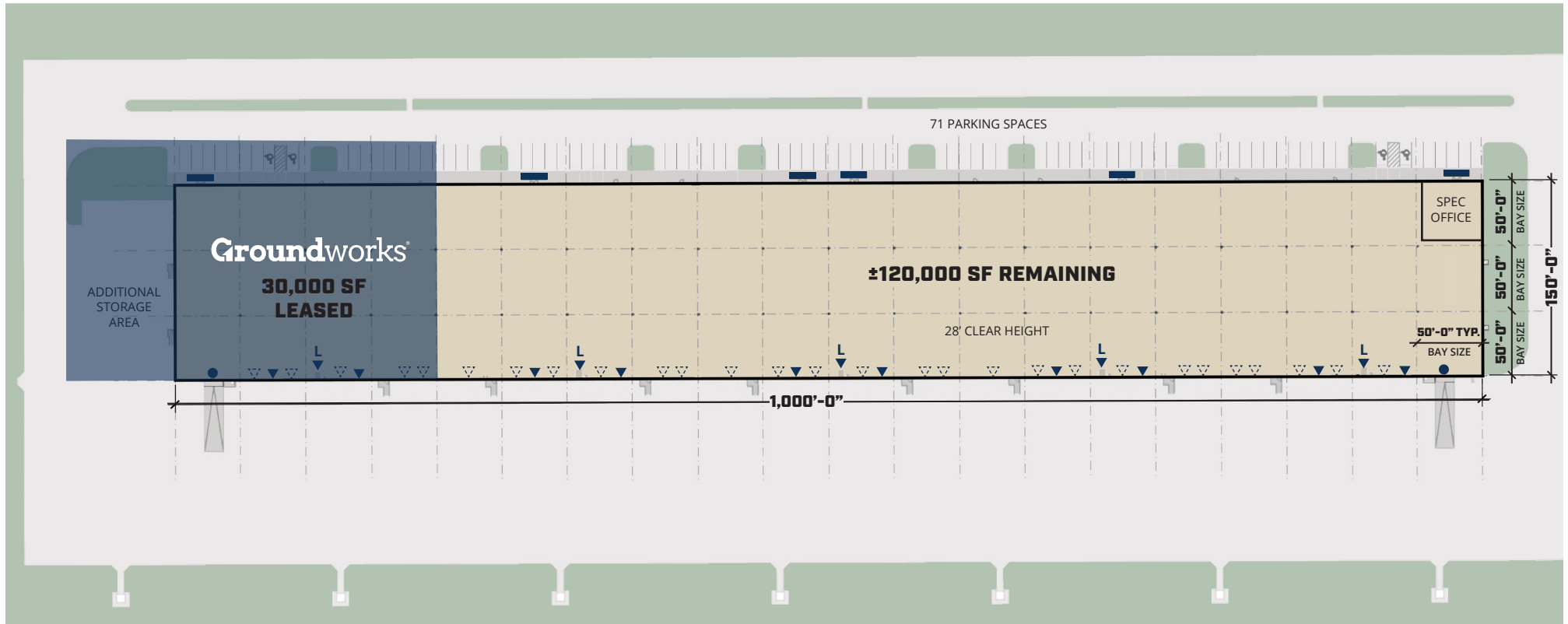
Building Size	±150,000 SF
Unit Sizes	±15,000 - 120,000 SF
Building Dimensions	1,000' x 150'
Configuration	Rear-Load
Column Spacing	50' x 50'
Clear Height	28'
Office	Spec: ±2,000 OR Built-to-Suit
Dock Doors	12 (4 with levelers)
Knock-Out Dock Doors	23
Drive-in Doors	1
Auto Parking	71 Spaces
Additional Outdoor Storage	None Available
Availability	Now

Building 2

Building Size	±150,000 SF
Unit Sizes	±15,000 - 112,500 SF
Building Dimensions	1,000' x 150'
Configuration	Rear-Load
Column Spacing	50' x 50'
Clear Height	28'
Office	Spec: ±2,000 OR Built-to-Suit
Dock Doors	11 (4 with levelers)
Knock-Out Dock Doors	23
Drive-in Doors	None Available
Auto Parking	68 Spaces
Additional Outdoor Storage	None Available
Availability	Now

BUILDING 1

Flexible Bay Sizes ranging from ±15,000 - 120,000 SF

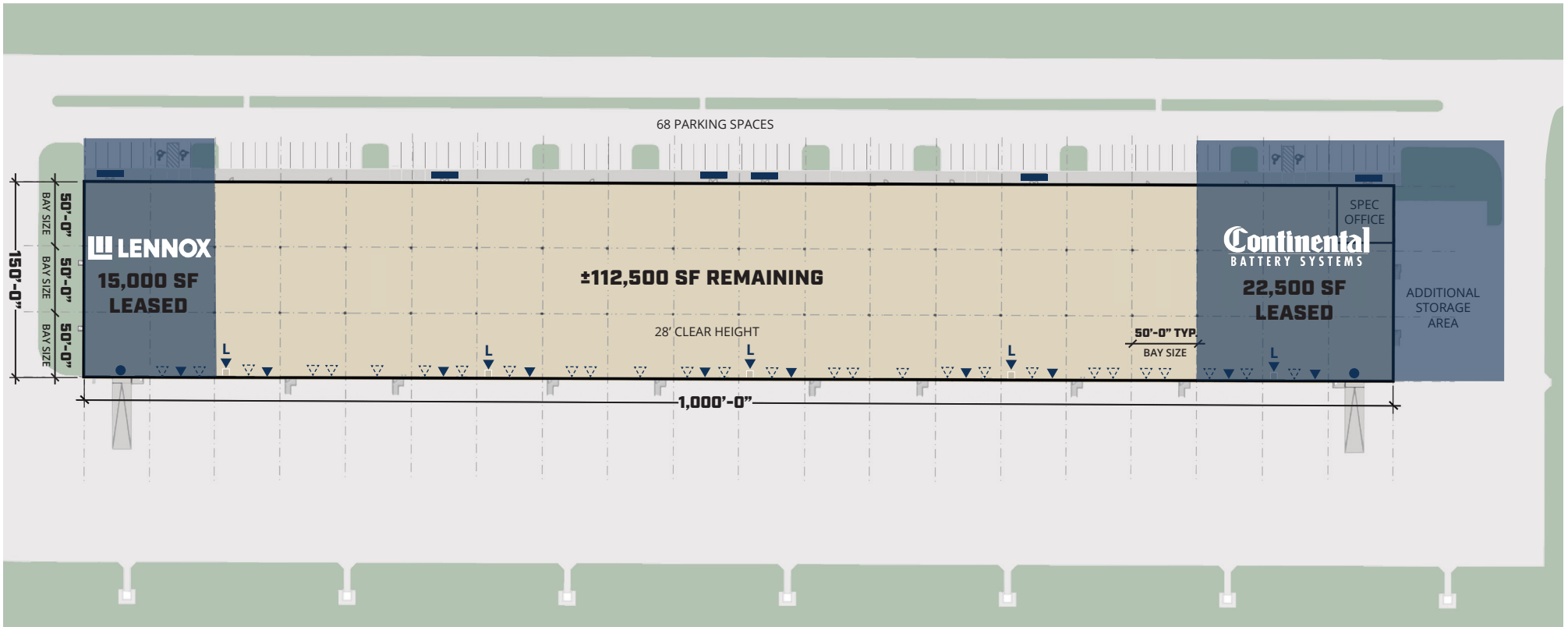


LEGEND

- TENANT OFFICE ENTRY LOCATION
- ▼ OVERHEAD DOCK DOOR | 8 DOORS
- ▽ KNOCK OUT DOCK DOOR | 23 DOORS
- L OVERHEAD DOCK DOOR WITH LEVELERS | 4 DOORS
- DRIVE-IN DOOR | 1 DOOR

BUILDING 2

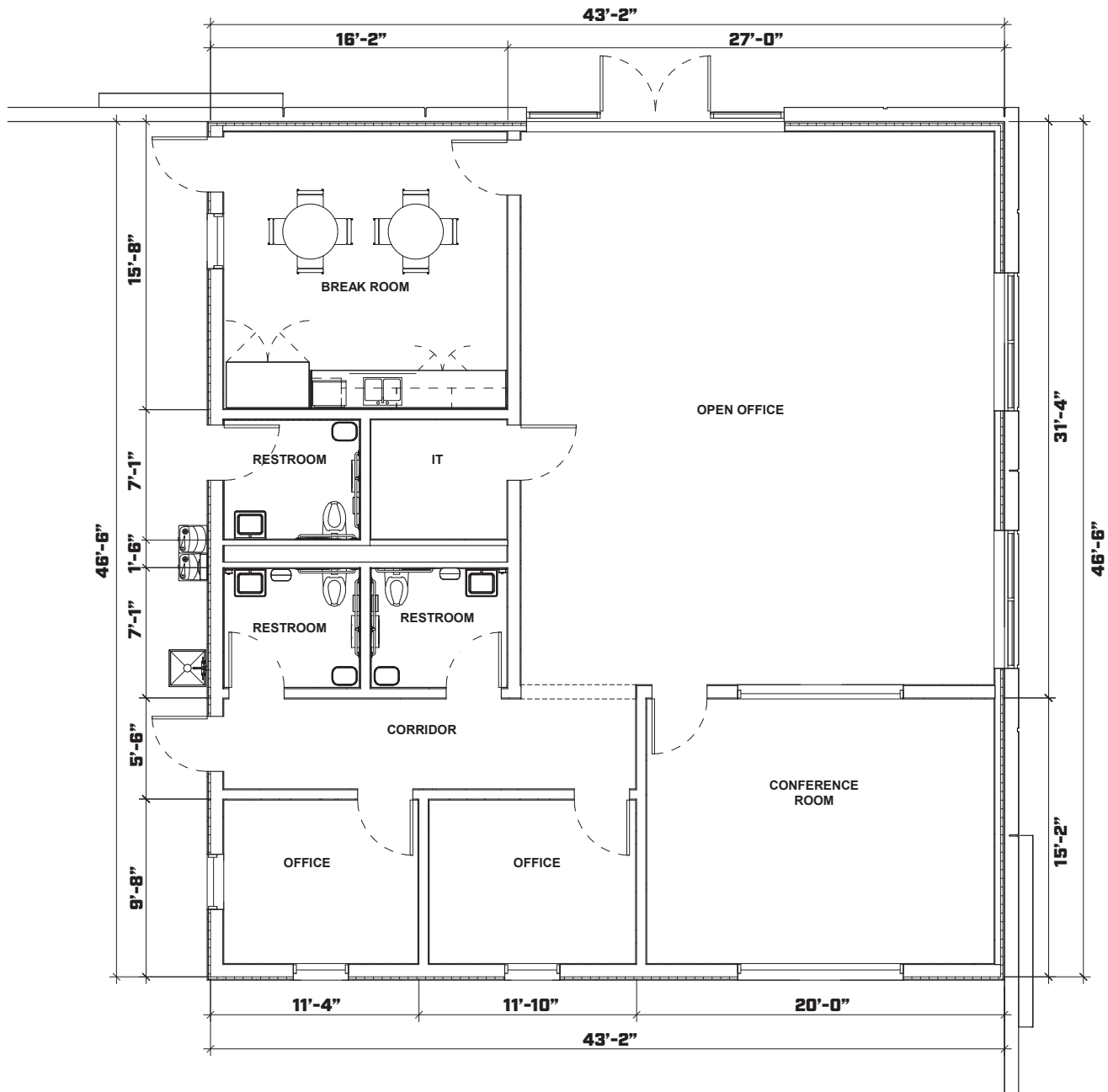
Flexible Bay Sizes ranging from ±15,000 - 112,500 SF



LEGEND

- TENANT OFFICE ENTRY LOCATION
- ▼ OVERHEAD DOCK DOOR | **11 DOORS**
- ▽ KNOCK OUT DOCK DOOR | **23 DOORS**
- L OVERHEAD DOCK DOOR WITH LEVELERS | **4 DOORS**
- DRIVE-IN DOOR | **None Available**

Spec Office Plan ±2,000 SF



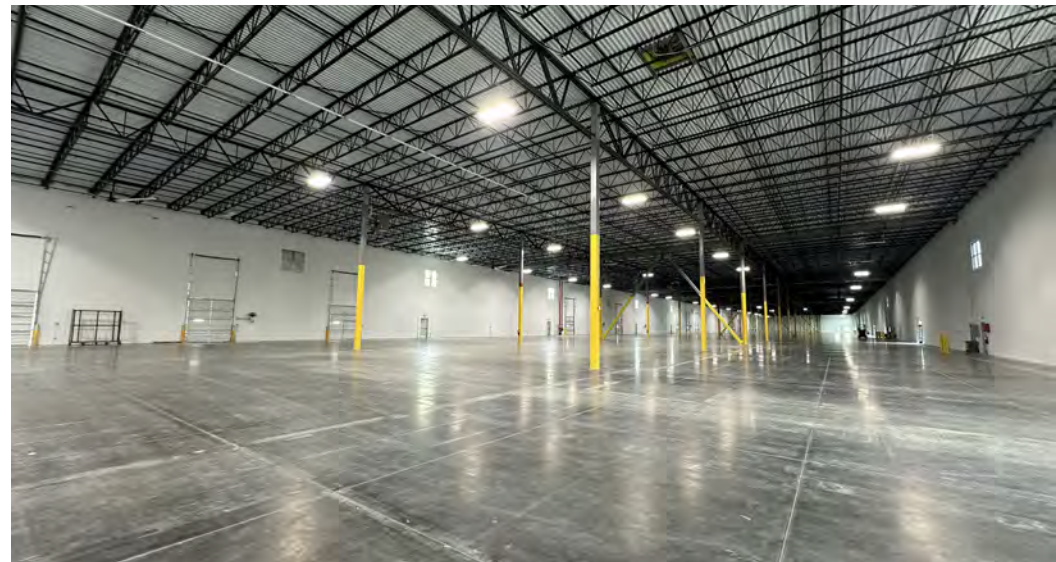


Exterior Photos



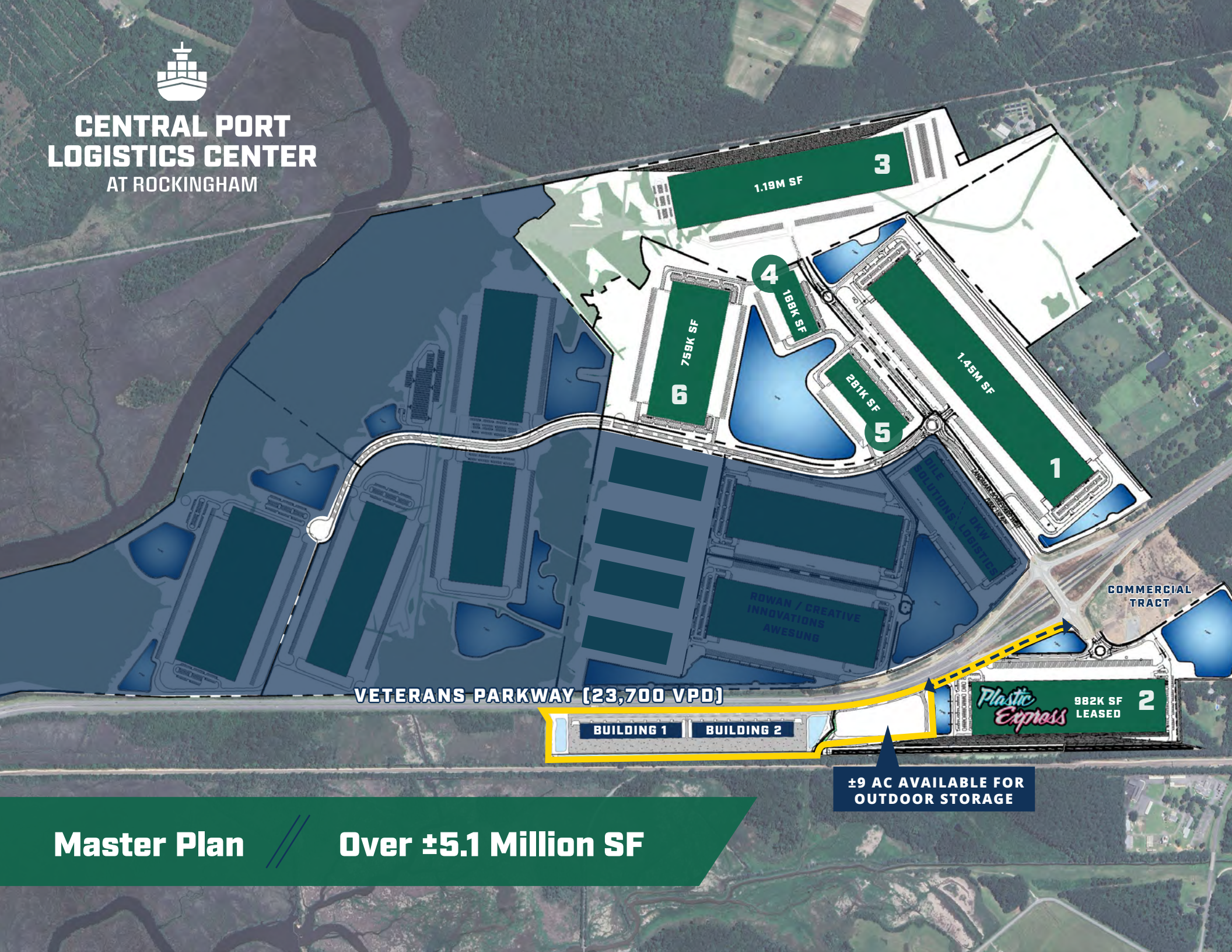


Interior Photos





CENTRAL PORT LOGISTICS CENTER AT ROCKINGHAM



VETERANS PARKWAY (23,700 VPD)

BUILDING 1

BUILDING 2

Plastic Express
982K SF
LEASED

±9 AC AVAILABLE FOR
OUTDOOR STORAGE

Master Plan // **Over ±5.1 Million SF**

Destinations

Ocean Terminal	5 Miles
GC Terminal	7 Miles
SAV Int'l Airport	13 Miles
Hyunda EV Plant	30 Miles

Major Roadways

Interstate 516	2.5 Miles
Highway 204	3 Miles
Interstate 16	4 Miles
Interstate 95	8 Miles

Cities

Pooler, GA	8 Miles
Charleston, SC	113 Miles
Jacksonville, FL	135 Miles
Atlanta, GA	250 Miles



Logistics & Distribution Hub

Port of Savannah

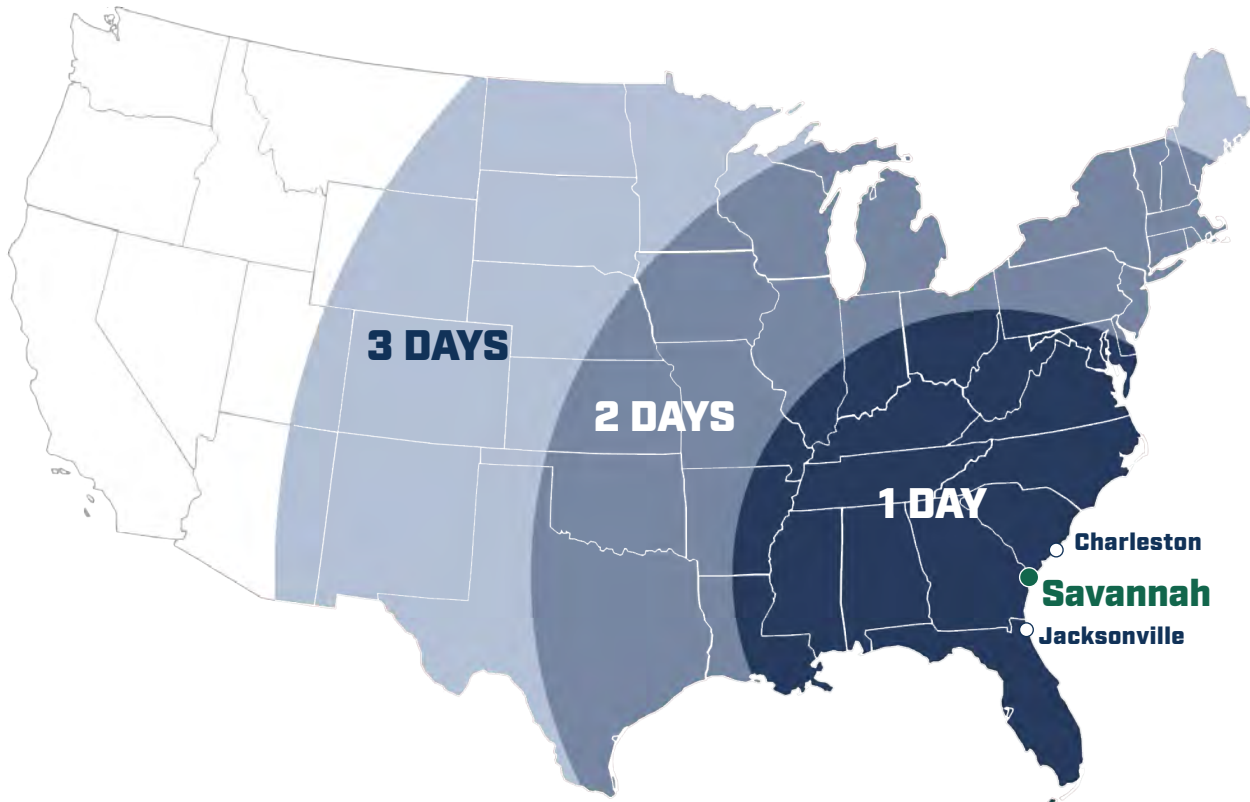
The single largest and fastest-growing container terminal in America, serving 44% of the population. The port has one of the highest over-the-road container weight allowances among U.S. southeastern states.

Transport Connectivity

Linked to the vast network of transportation routes in the United States, I-95 grants Savannah entry to the entirety of the Eastern Seaboard, while I-16 seamlessly connects it to the Atlanta market.

Strategic Location

Savannah benefits from overnight service to the entire Southeast and direct connectivity to over 80% of the U.S. population within a two-day drive.



Military Zone

Building is located in Military Zone. If a company created 100 qualifying new jobs, then they would receive **100 qualifying new jobs x \$3,500 x 5 years = \$1,750,000 in tax credits.**

Tax Credit Incentives

- The maximum Job Tax Credit allowed under law - \$3,500 per job created (x5 years)
- Use of Job Tax Credits against 100% of income tax liability and withholding taxes

U.S. Foreign-Trade Zone 104

Cost Benefits

- Customs duties deferred on imports improves cash flow
- No duty or quota charges on re-exports. No duty on waste, scrap or defective parts
- Duty paid at the lower tariff rate of the imported component or finished product
- Reductions in merchandise processing fees due to weekly entry
- Inventory may be exempt from local and state inventory taxes

FOR LEASE

TWO ±150,000 SF FLEX WAREHOUSES



**CENTRAL PORT
LOGISTICS CENTER
AT ROCKINGHAM**

CAPITAL
DEVELOPMENT PARTNERS

Colliers

CONTACT US:

Sebastian Findlay SIOR

Principal | Savannah
+1 912 483 6160
sebastian.findlay@colliers.com

George Brown

Associate | Savannah
+1 912 307 2277
george.brown@colliers.com

This document has been prepared by Colliers International for advertising and general information only. Colliers International makes no guarantees, representations or warranties of any kind, expressed or implied, regarding the information including, but not limited to, warranties of content, accuracy and reliability. Any interested party should undertake their own inquiries as to the accuracy of the information. Colliers International excludes unequivocally all inferred or implied terms, conditions and warranties arising out of this document and excludes all liability for loss and damages arising there from. This publication is the copyrighted property of Colliers International and/or its licensor(s). ©2026. All rights reserved.