

±21.72 ACRES FOR SALE > ACROSS FROM BEREA HIGH SCHOOL



# Residential Land Development

BEREA DRIVE AT LIONS CLUB ROAD, GREENVILLE, SC 29617



## Property Attributes

- > 21.72± acres
- > Gentle topography with 3.25± acre pond onsite
- > All utilities available (electricity, water, sewer, gas)
- > Greenville County TM# B013010101803, B013010101800, B013010101500, B013010101600, B013010100900
- > Zoned R-M20, Greenville County
- > Close proximity to Bera's primary retail node and schools
- > Potential use for multifamily development or single-family residential development
- > **SALE PRICE: \$325,000**

## Demographics (2016)

	1-MILE	3-MILE	5-MILE
POPULATION	7,298	42,107	100, 895
AVERAGE HH INCOME	\$40,710	\$40,595	\$48,882
ROOFTOPS	2,530	16,003	39,297

FRANK HAMMOND, CCIM  
DIR 864 527 5451  
MAIN 864 297 4950  
frank.hammond@colliers.com

COLLIERS INTERNATIONAL  
55 E Camperdown Way  
Greenville, SC 29601  
www.colliers.com/southcarolina



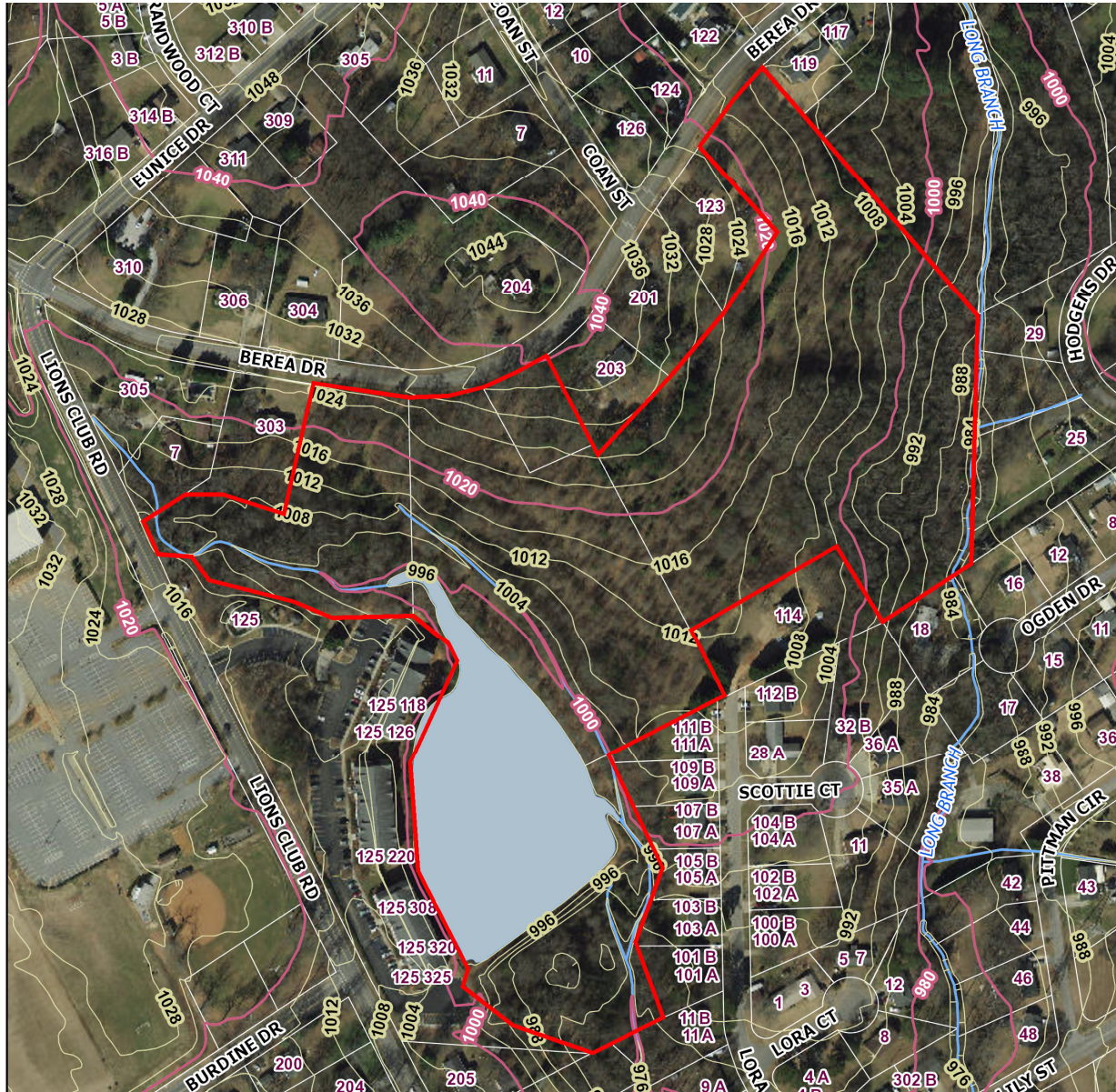
±21.72 ACRES FOR SALE > ACROSS FROM BEREA HIGH SCHOOL



# Residential Land Development

BEREA DRIVE AT LIONS CLUB ROAD, GREENVILLE, SC 29617

TOPO



Source: Greenville County GIS