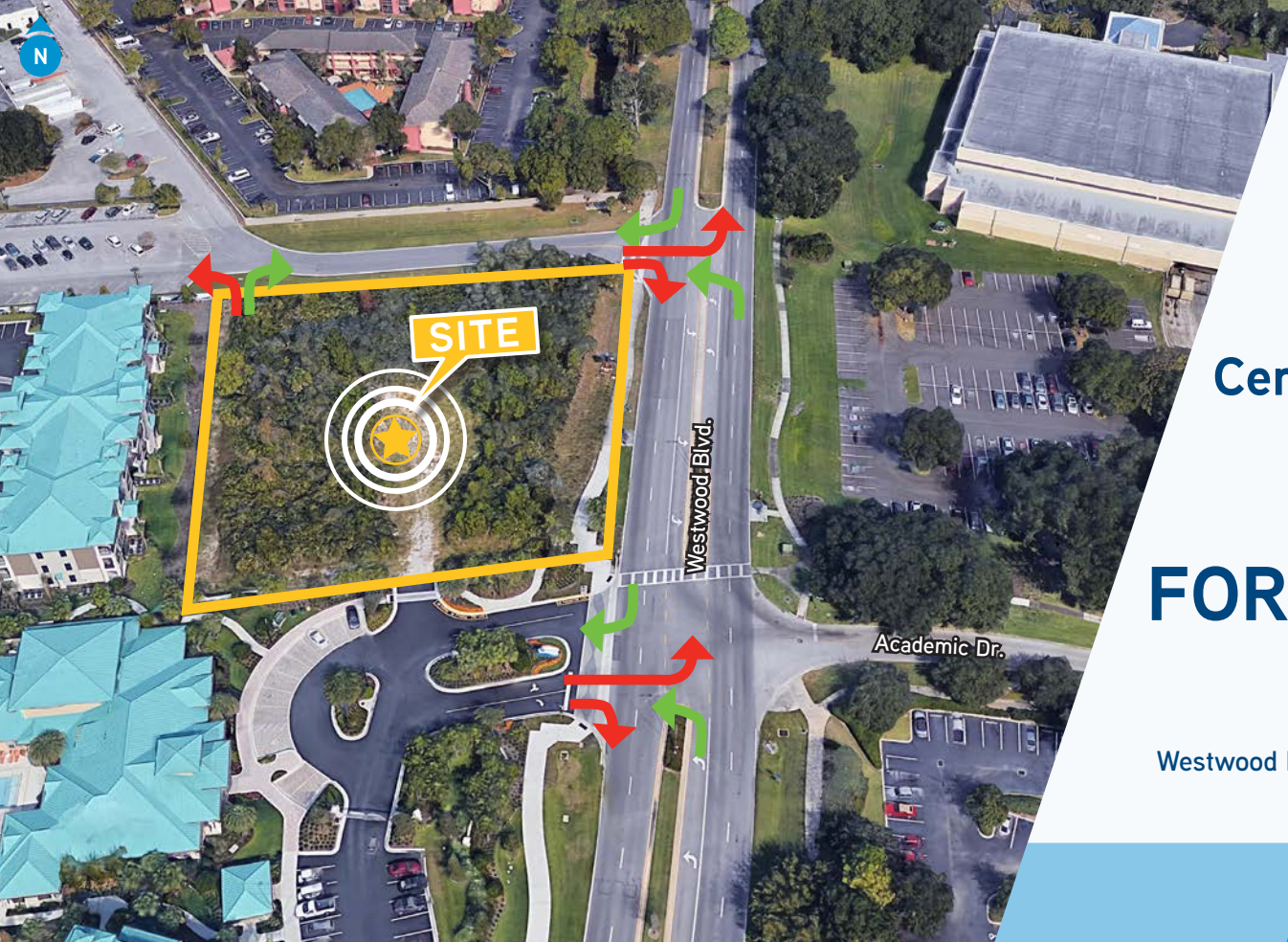


# New Retail Center And/OR Pad Site

## FOR LEASE

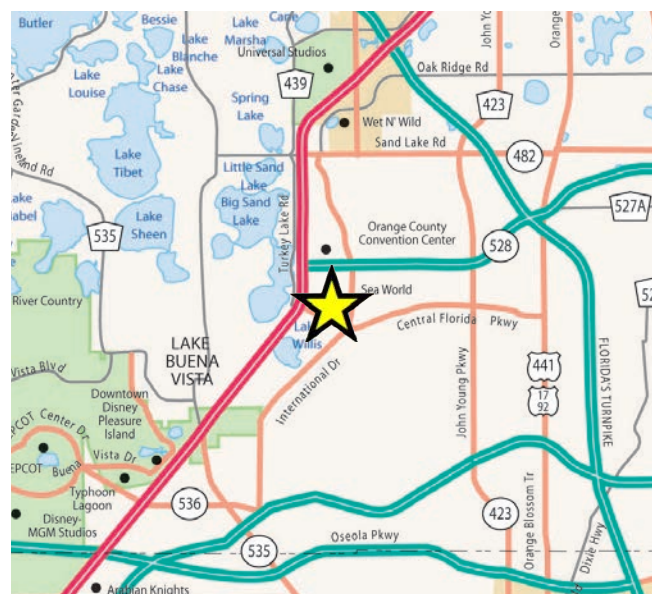
Westwood Blvd. & Academic Dr.  
Orlando, FL 32821



### PROPERTY HIGHLIGHTS

- 1.56± acres, up to 13,650± SF available for lease.
- Delivery: 2019.
- Full access/egress with two median cuts.
- Located just 2 miles from the Orange County Convention Center, the second largest convention center in the United States.
- Surrounded by more than 40,000 hotels in the International Drive tourist corridor.
- Easily accessible from Interstate 4.
- Great visibility and frontage.
- More than 68 million visitors to Orlando in 2016.
- Walking distance to Sea World.
- High volume restaurant trade area.

### LOCATION MAP



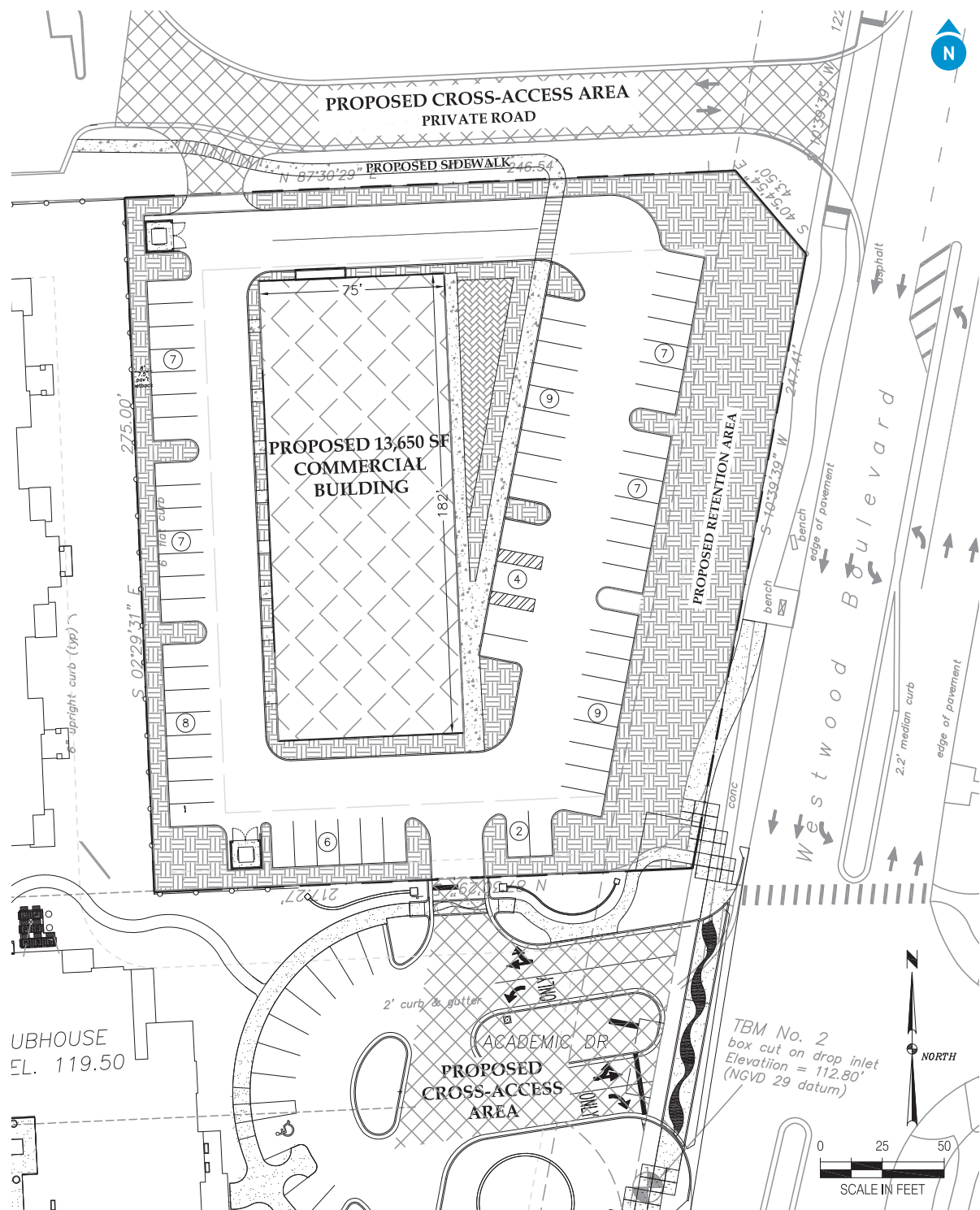
### AREA DEMOGRAPHICS

	3-Mile	5-Mile	10-Mile
Population	40,412	116,926	589,095
Daytime Population	55,134	153,659	445,821
Average HH Income	\$93,411	\$83,816	\$70,147
Households	13,939	40,648	207,470

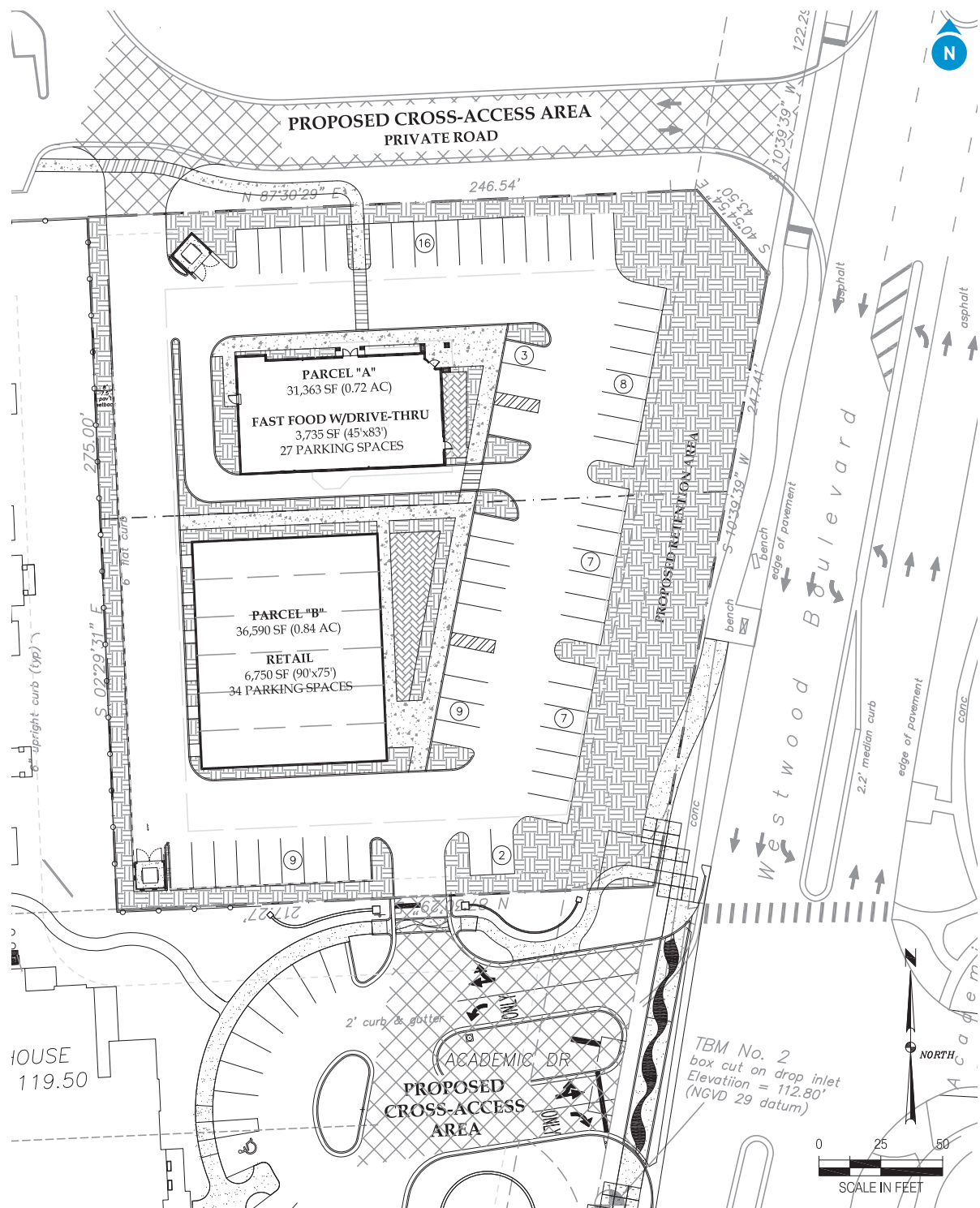
### CONTACT US

**Scott Corbin**  
Executive Managing Director,  
Retail Services  
+1 407 362 6164  
scott.corbin@colliers.com

**Colliers International**  
255 S. Orange Avenue,  
Suite 1300  
Orlando, FL 32801  
www.colliers.com









# MARKET AERIAL



This document has been prepared by Colliers International for advertising and general information only. Colliers International makes no guarantees, representations or warranties of any kind, expressed or implied, regarding the information including, but not limited to, warranties of content, accuracy and reliability. Any interested party should undertake their own inquiries as to the accuracy of the information. Colliers International excludes unequivocally all inferred or implied terms, conditions and warranties arising out of this document and excludes all liability for loss and damages arising there from. This publication is the copyrighted property of Colliers International and/or its licensor(s). ©2018. All rights reserved.



Accelerating success.