

FOR LEASE > RETAIL / MIXED-USE

PREMIER MICHIGAN AVENUE RETAIL IN CORKTOWN

1350-1364 MICHIGAN AVENUE | DETROIT, MICHIGAN



NEW MIXED-USE REDEVELOPMENT

> PROPERTY HIGHLIGHTS

- 1,200-3,845 SF of First Floor Retail on Michigan Avenue with 33 Residential Units
- 70 FT of Frontage on Michigan Avenue
- 82 Space On-Site Surface Lot

> DEMOGRAPHICS

	1 MILE	3 MILE	5 MILE
POPULATION	10,811	80,836	227,827
AVG. INCOME	\$52,219	\$39,120	\$37,987
HOUSEHOLDS	6,376	38,559	93,173

COLLIERS INTERNATIONAL

2 Corporate Drive | Suite 300
Southfield, Michigan 48076

For More Information Call:

BEN ROSENZWEIG

PHONE 248 540 1000 EXT 1866
EMAIL ben.rosenzweig@colliers.com



BEN HUBERT

PHONE 248 540 1000 EXT 1864
EMAIL ben.hubert@colliers.com



colliers.com/detroit



FOR LEASE > RETAIL / MIXED-USE

PREMIER MICHIGAN AVENUE RETAIL IN CORKTOWN

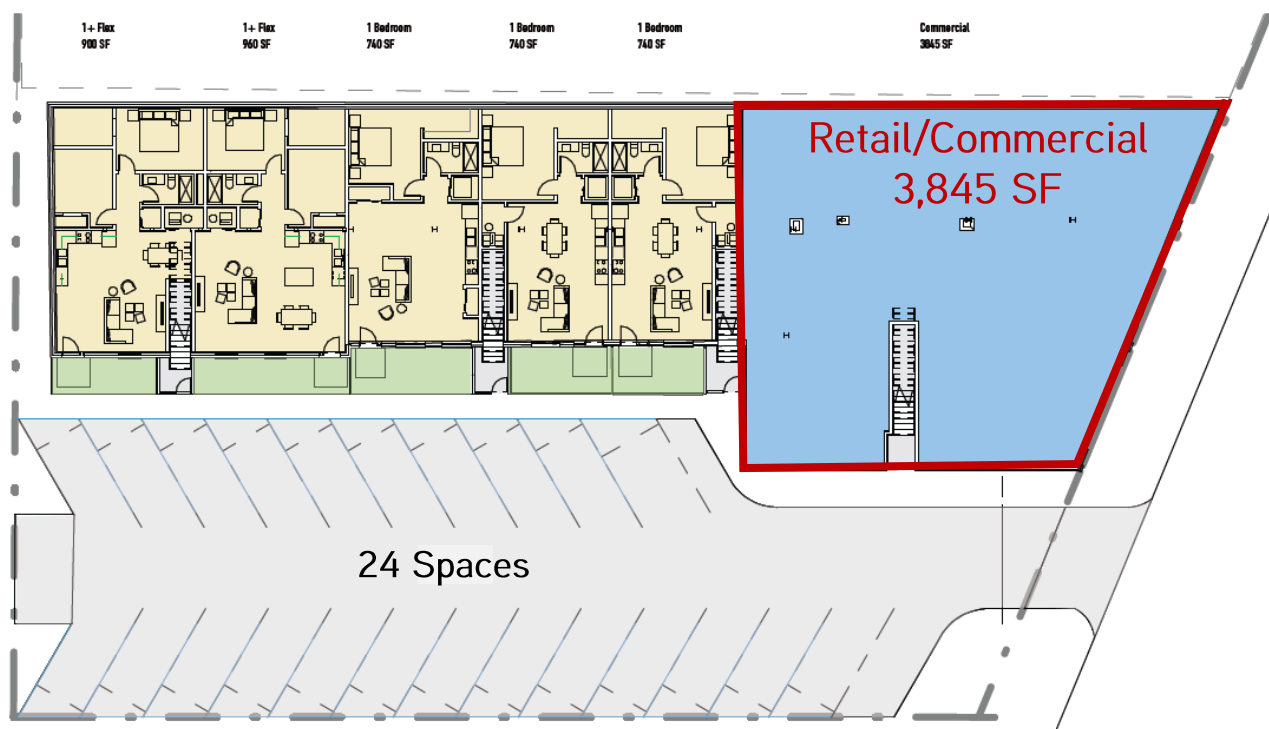
1350-1364 MICHIGAN AVENUE | DETROIT, MICHIGAN



> EXISTING BUILDING 1 & PROPOSED BUILDING 2 RENDERING



> GROUND FLOOR SITE PLAN – BUILDING 1



FOR LEASE > RETAIL / MIXED-USE

PREMIER MICHIGAN AVENUE RETAIL IN CORKTOWN

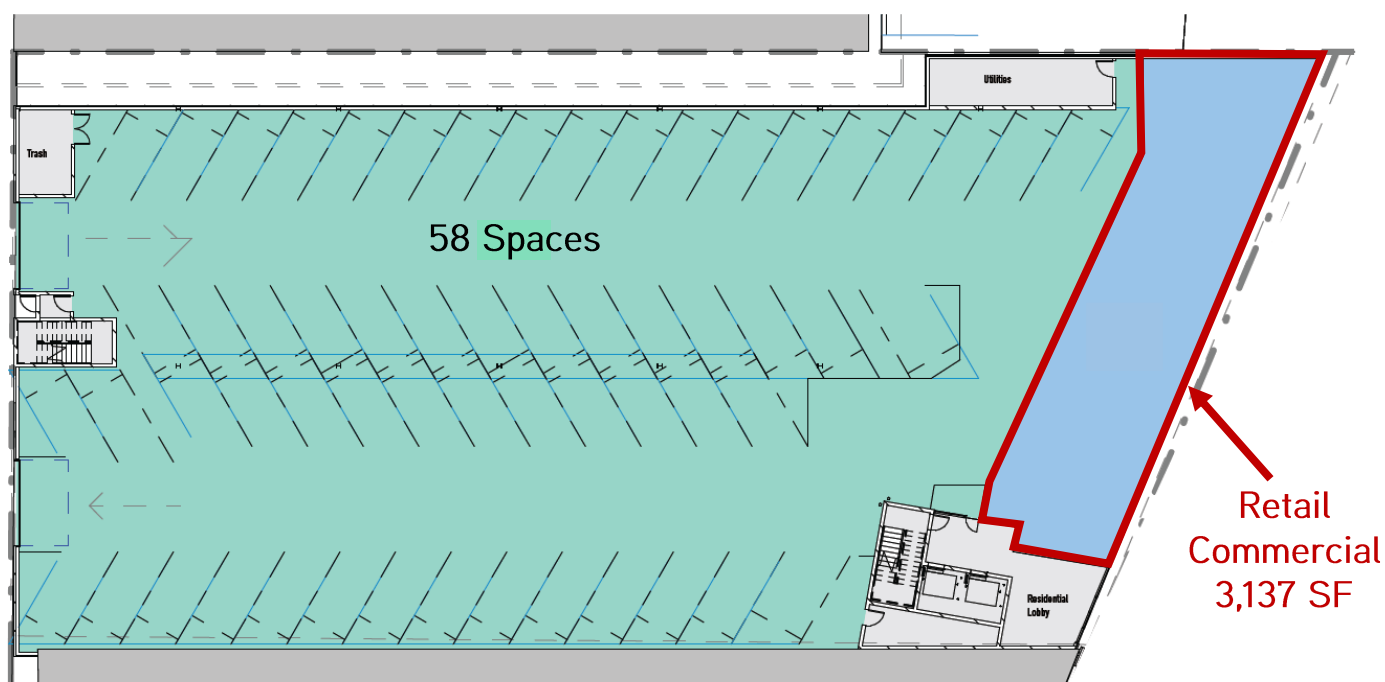


1350-1364 MICHIGAN AVENUE | DETROIT, MICHIGAN

> EXISTING BUILDING 1 & PROPOSED BUILDING 2 RENDERING



> GROUND FLOOR SITE PLAN – BUILDING 2



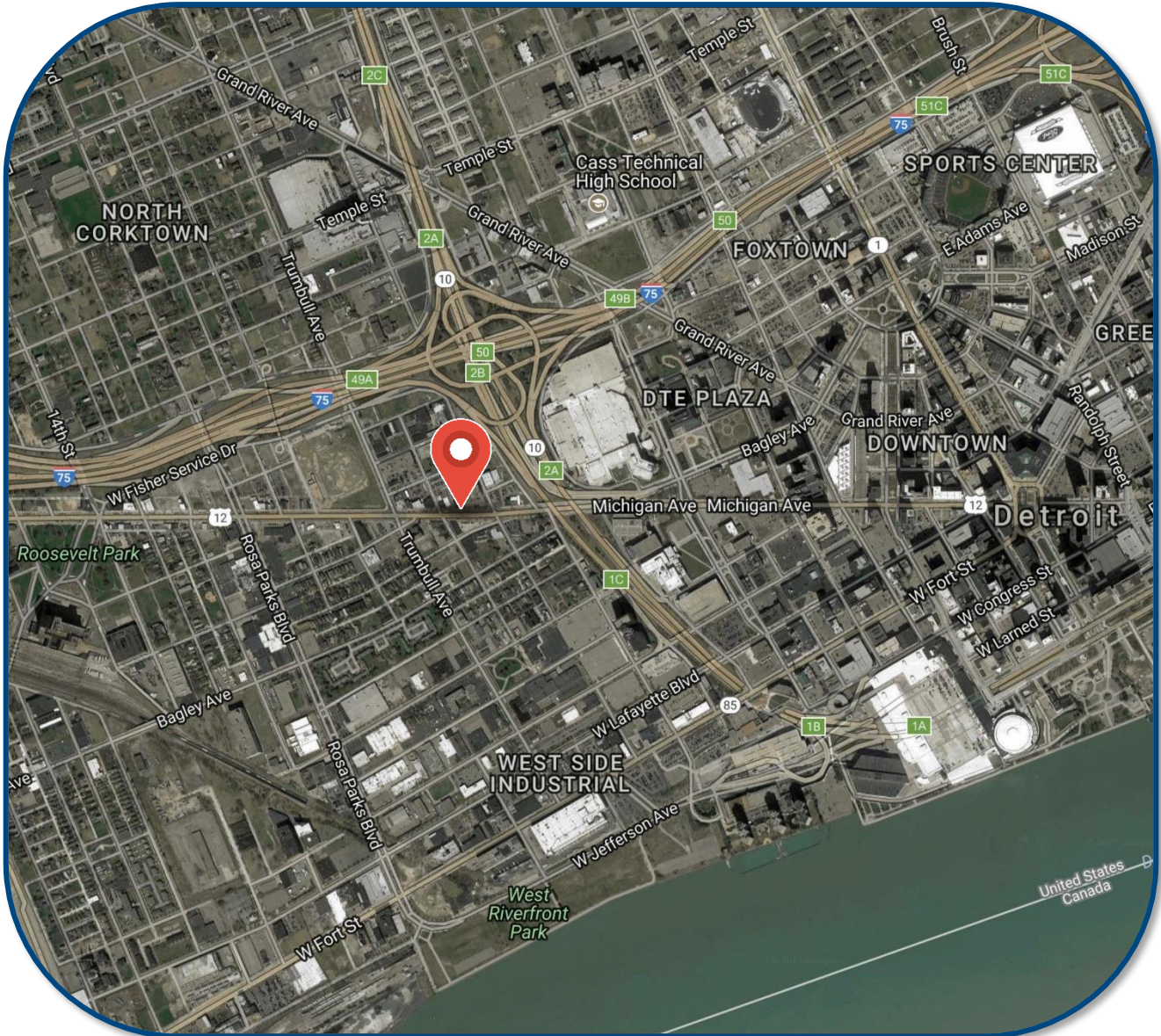
FOR LEASE > RETAIL / MIXED-USE

PREMIER MICHIGAN AVENUE RETAIL IN CORKTOWN



1350-1364 MICHIGAN AVENUE | DETROIT, MICHIGAN

> AERIAL MAP



BEN ROSENZWEIG

PHONE 248 540 1000 EXT 1866

EMAIL ben.rosenzweig@colliers.com



BEN HUBERT

PHONE 248 540 1000 EXT 1864

EMAIL ben.hubert@colliers.com

SUMMARY PROFILE

2000-2010 Census, 2017 Estimates with 2022 Projections

Calculated using Weighted Block Centroid from Block Groups



Lat/Lon: 42.3318/-83.0649

RS1

1350-1364 Michigan Ave

Detroit, MI 48226

1 mi radius

3 mi radius

5 mi radius

POPULATION	2017 Estimated Population	10,811	80,836	227,827
	2022 Projected Population	11,588	83,589	242,781
	2010 Census Population	10,551	83,261	240,070
	2000 Census Population	11,393	101,897	312,394
	Projected Annual Growth 2017 to 2022	1.4%	0.7%	1.3%
	Historical Annual Growth 2000 to 2017	-0.3%	-1.2%	-1.6%
	2017 Median Age	42.3	36	35.1
HOUSEHOLDS	2017 Estimated Households	6,376	38,559	93,173
	2022 Projected Households	7,087	40,859	102,064
	2010 Census Households	5,848	37,831	93,938
	2000 Census Households	5,055	41,893	115,746
	Projected Annual Growth 2017 to 2022	2.2%	1.2%	1.9%
	Historical Annual Growth 2000 to 2017	1.5%	-0.5%	-1.1%
RACE AND ETHNICITY	2017 Estimated White	30.7%	27.5%	29.2%
	2017 Estimated Black or African American	60.2%	56.8%	55.4%
	2017 Estimated Asian or Pacific Islander	2.9%	2.7%	3.4%
	2017 Estimated American Indian or Native Alaskan	0.6%	0.5%	0.5%
	2017 Estimated Other Races	5.6%	12.4%	11.5%
	2017 Estimated Hispanic	7.6%	19.6%	17.7%
INCOME	2017 Estimated Average Household Income	\$52,219	\$39,120	\$37,987
	2017 Estimated Median Household Income	\$31,086	\$27,846	\$27,337
	2017 Estimated Per Capita Income	\$32,221	\$19,309	\$15,924
EDUCATION (AGE 25+)	2017 Estimated Elementary (Grade Level 0 to 8)	4.5%	8.4%	10.9%
	2017 Estimated Some High School (Grade Level 9 to 11)	10.2%	14.2%	16.1%
	2017 Estimated High School Graduate	21.3%	26.1%	29.8%
	2017 Estimated Some College	25.7%	22.8%	21.5%
	2017 Estimated Associates Degree Only	5.5%	5.3%	5.6%
	2017 Estimated Bachelors Degree Only	16.8%	11.9%	9.1%
	2017 Estimated Graduate Degree	15.9%	11.3%	7.0%
BUSINESS	2017 Estimated Total Businesses	2,107	8,122	11,522
	2017 Estimated Total Employees	51,755	155,794	195,045
	2017 Estimated Employee Population per Business	24.6	19.2	16.9
	2017 Estimated Residential Population per Business	5.1	10.0	19.8

This report was produced using data from private and government sources deemed to be reliable. The information herein is provided without representation or warranty.