

FOR SALE, LEASE, OR BTS > LAND SPACE

# Downtown Ogden Retail Pad

247 EAST 24TH STREET OGDEN, UTAH



## Property Information

- > Pad Size .85 AC
- > Located on Hard Corner in the heart of Ogden CBD
- > Anchored by Marriott Hotel
- > Walking Distance to Historic 25th St Retail District
- > Right off I-15 Interchange
- > Ideal for Restaurant or Small Pharmacy

DEMOGRAPHICS	1 MILE	3 MILE	5 MILE
<b>Population</b>			
2017 Estimated	14,406	82,528	154,049
2022 Projected	14,221	83,021	159,370
<b>Households</b>			
2017 Estimated	5,442	29,811	55,320
2022 Projected	5,628	30,704	58,526
<b>Income</b>			
2017 Median HHI	\$25,454	\$43,516	\$53,453
2017 Average HHI	\$39,395	\$55,516	\$66,263
2017 Per Capita	\$15,445	\$20,273	\$23,991

Information provided by ESRI Business Analyst

Brad Brown  
+1 801 309 0399  
brad.brown@colliers.com

Sky Hazlehurst  
+1 801 837 2020  
sky.hazlehurst@colliers.com

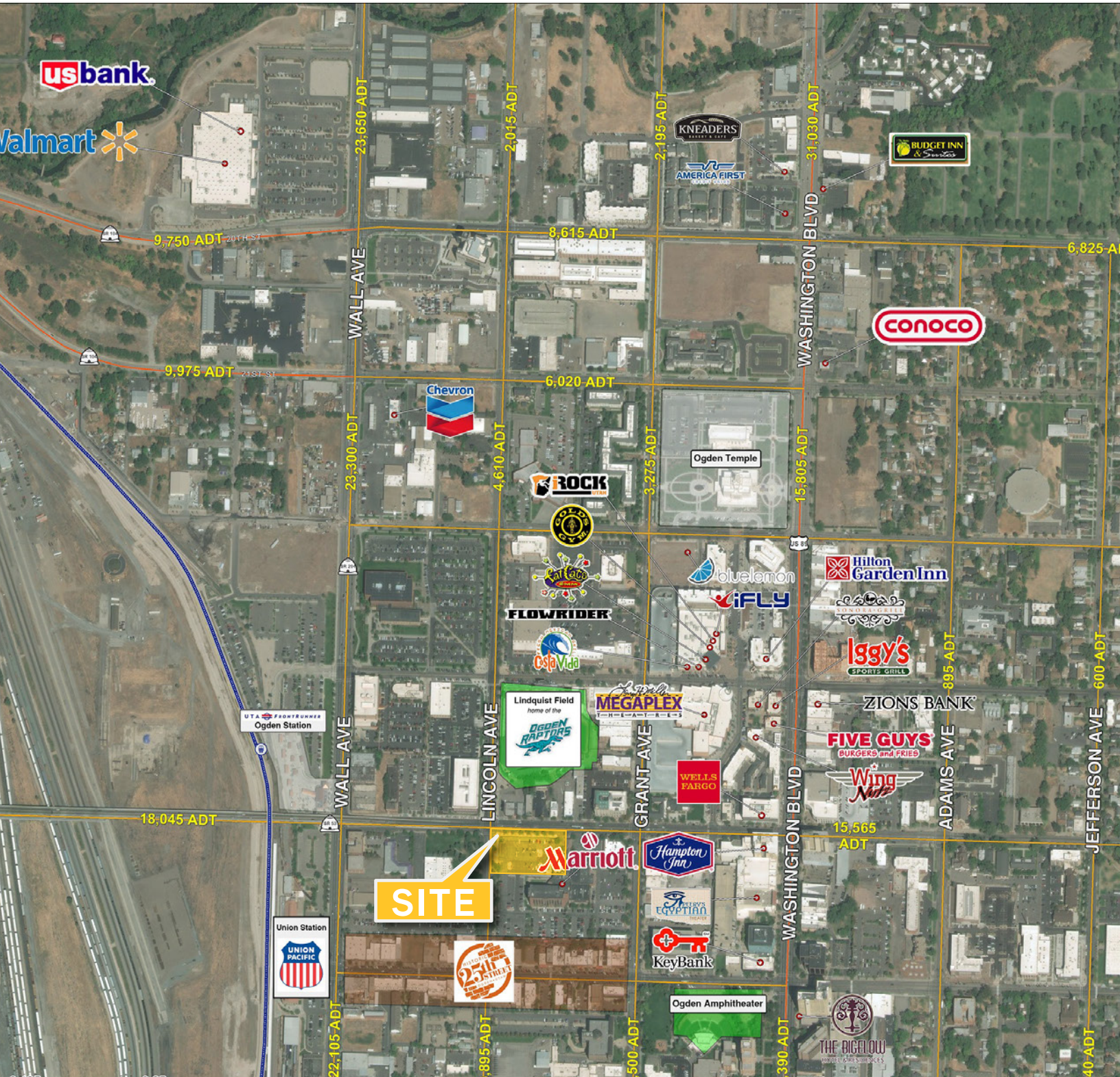
Colliers International  
6550 S Millrock Dr | Suite 200  
Salt Lake City, UT 84121  
P: +1 801 947 8300



FOR SALE, LEASE, OR BTS > LAND SPACE

# Downtown Ogden Retail Pad

247 EAST 24TH STREET OGDEN, UTAH



This document has been prepared by Colliers International for advertising and general information only. Colliers International makes no guarantees, representations or warranties of any kind, expressed or implied, regarding the information including, but not limited to, warranties of content, accuracy and reliability. Any interested party should undertake their own inquiries as to the accuracy of the information. Colliers International excludes unequivocally all inferred or implied terms, conditions and warranties arising out of this document and excludes all liability for loss and damages arising there from. This publication is the copyrighted property of Colliers International and/or its licensor(s). ©2017. All rights reserved.

Colliers International  
6550 S Millrock Dr | Suite 200  
Salt Lake City, UT 84121  
P: +1 801 947 8300

