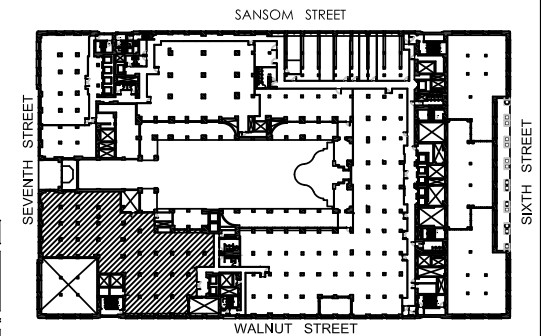
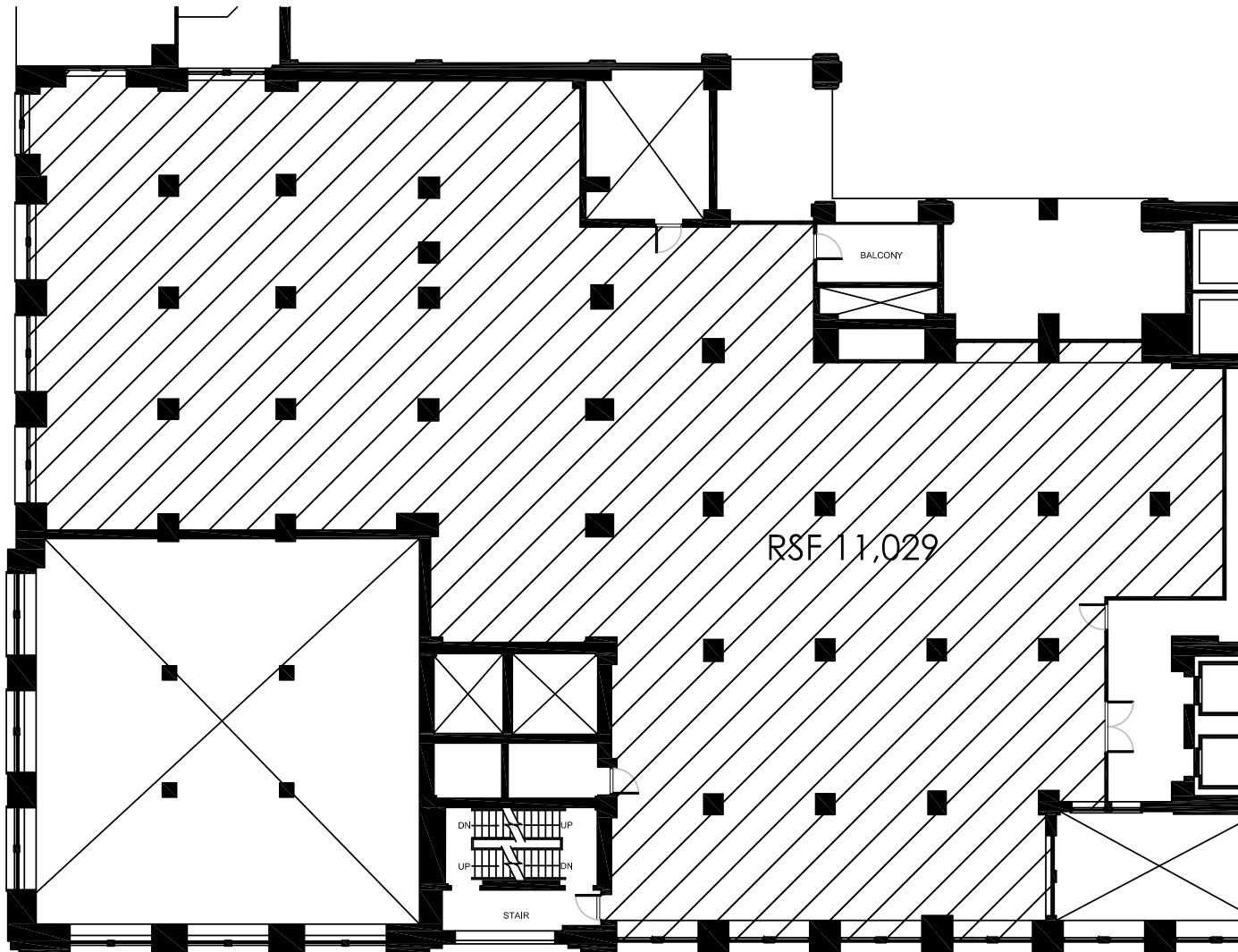




601 WALNUT STREET
SUITE - 140



DATE:	04.04.16
PROJECT:	16023.01
DRAWN BY:	DLI
CHECKED BY:	
SCALE:	Not to Scale
LOD:	31

L2Partridge
ARCHITECTURE | INTERIORS

1717 ARCH STREET, SUITE 4101
PHILADELPHIA, PA 19103
267.809.8400 T
215.557.7984 F
www.L2Partridge.com

OWNED BY:



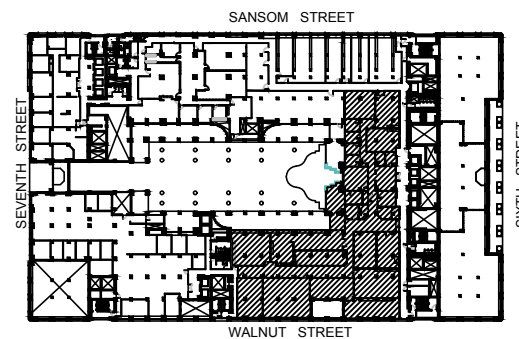
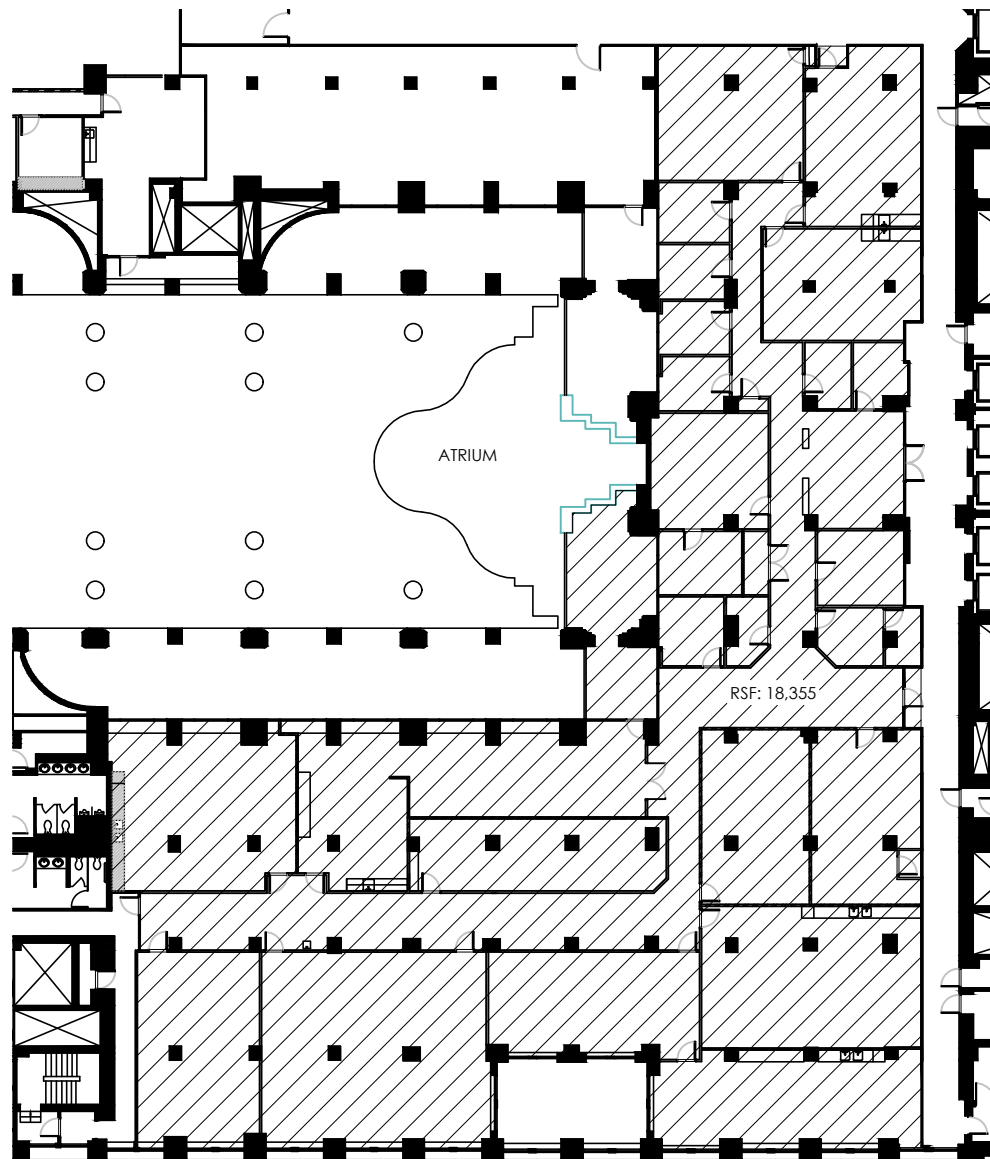
EXCLUSIVE LEASING BY:



Mezzanine



601 WALNUT STREET
SUITE - 100



DATE:	01.11.17
PROJECT:	17023.01
DRAWN BY:	DLI
CHECKED BY:	
SCALE:	Not to Scale
LOD:	3

L2Partridge
ARCHITECTURE | INTERIORS

1717 ARCH STREET, SUITE 4101
PHILADELPHIA, PA 19103
267.809.8400 T
215.557.7984 F
www.L2Partridge.com

OWNED BY:



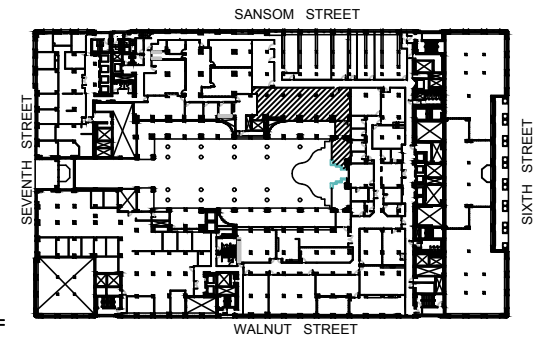
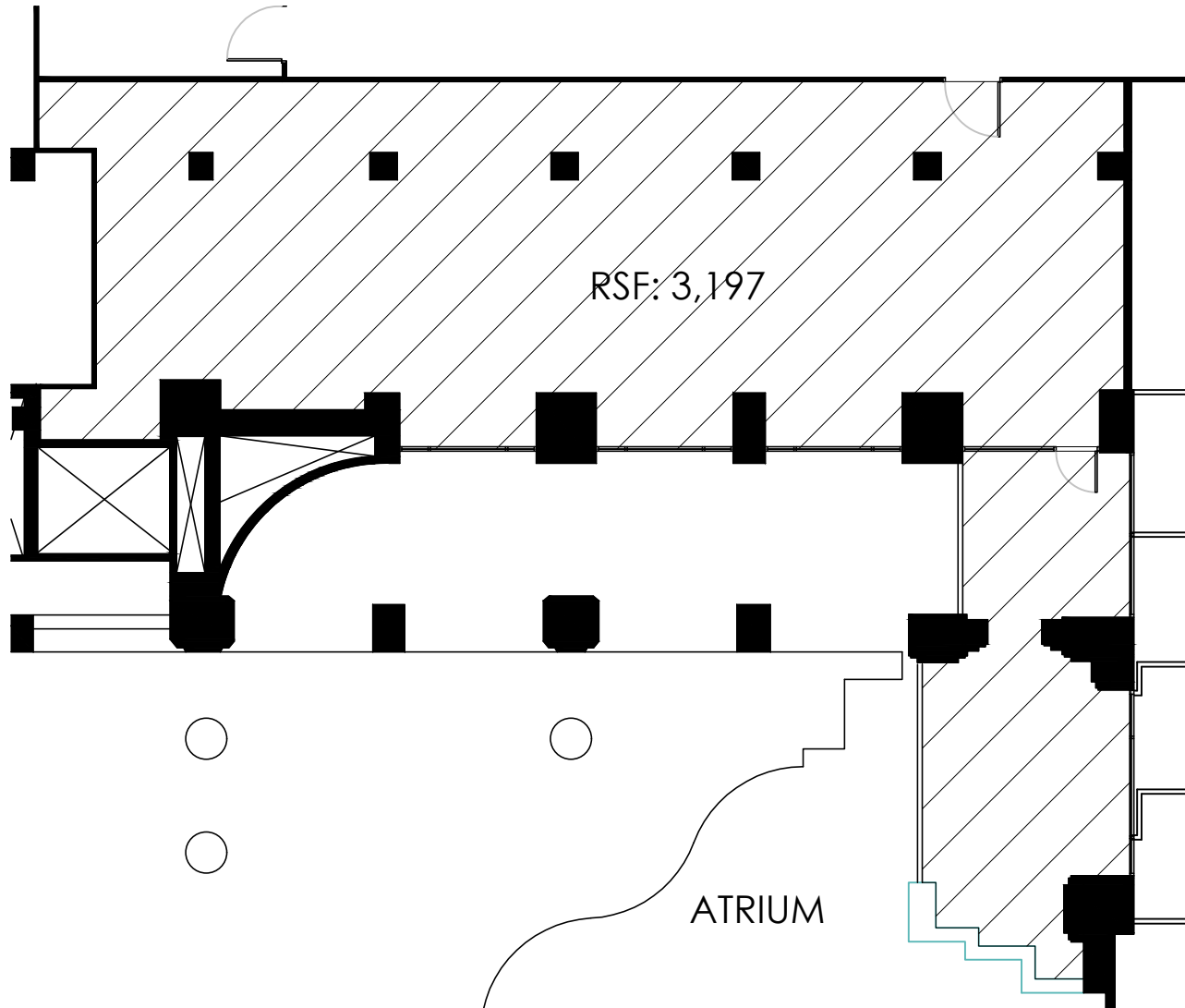
EXCLUSIVE LEASING BY:



MEZ Floor



601 WALNUT STREET
SUITE - 108



DATE:	01.11.17
PROJECT:	17023.01
DRAWN BY:	DLI
CHECKED BY:	
SCALE:	Not to Scale
LOD:	4

L2Partridge
ARCHITECTURE | INTERIORS

1717 ARCH STREET, SUITE 4101
PHILADELPHIA, PA 19103
267.809.8400 T
215.557.7984 F
www.L2Partridge.com

OWNED BY:



EXCLUSIVE LEASING BY:

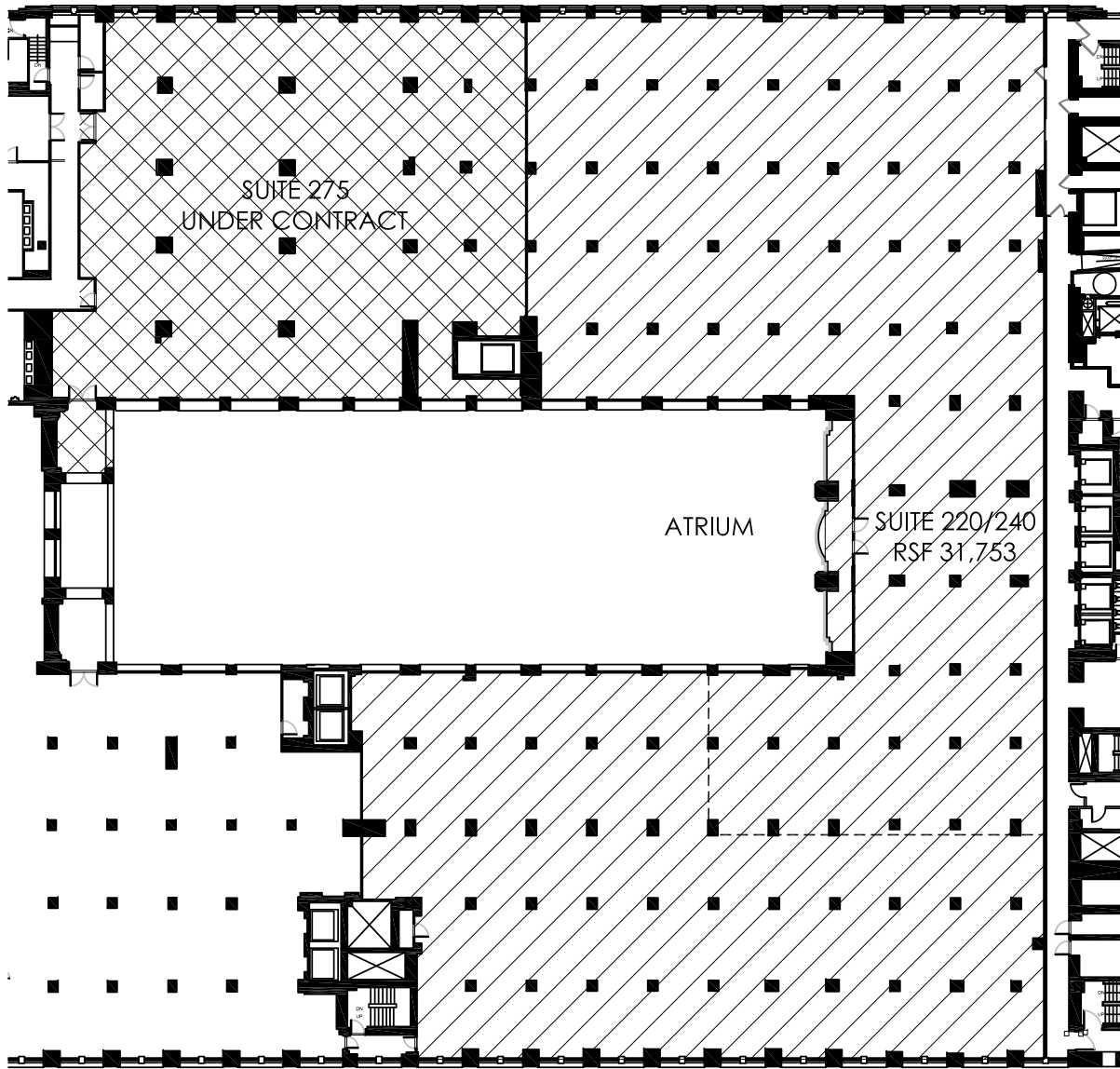


MEZ Floor

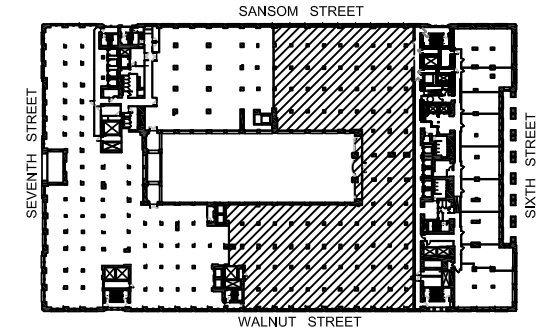


601 WALNUT STREET
SUITE - 220 AND 240

SANSOM STREET



WALNUT STREET



DATE:	04.11.16
PROJECT:	16023.01
DRAWN BY:	DLI
CHECKED BY:	
SCALE:	Not to Scale
LOD:	38

L2Partridge
ARCHITECTURE | INTERIORS

1717 ARCH STREET, SUITE 4101
PHILADELPHIA, PA 19103
267.809.8400 T
215.557.7984 F
www.L2Partridge.com

OWNED BY:



EXCLUSIVE LEASING BY:

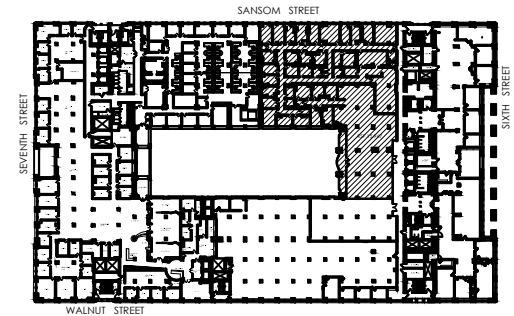
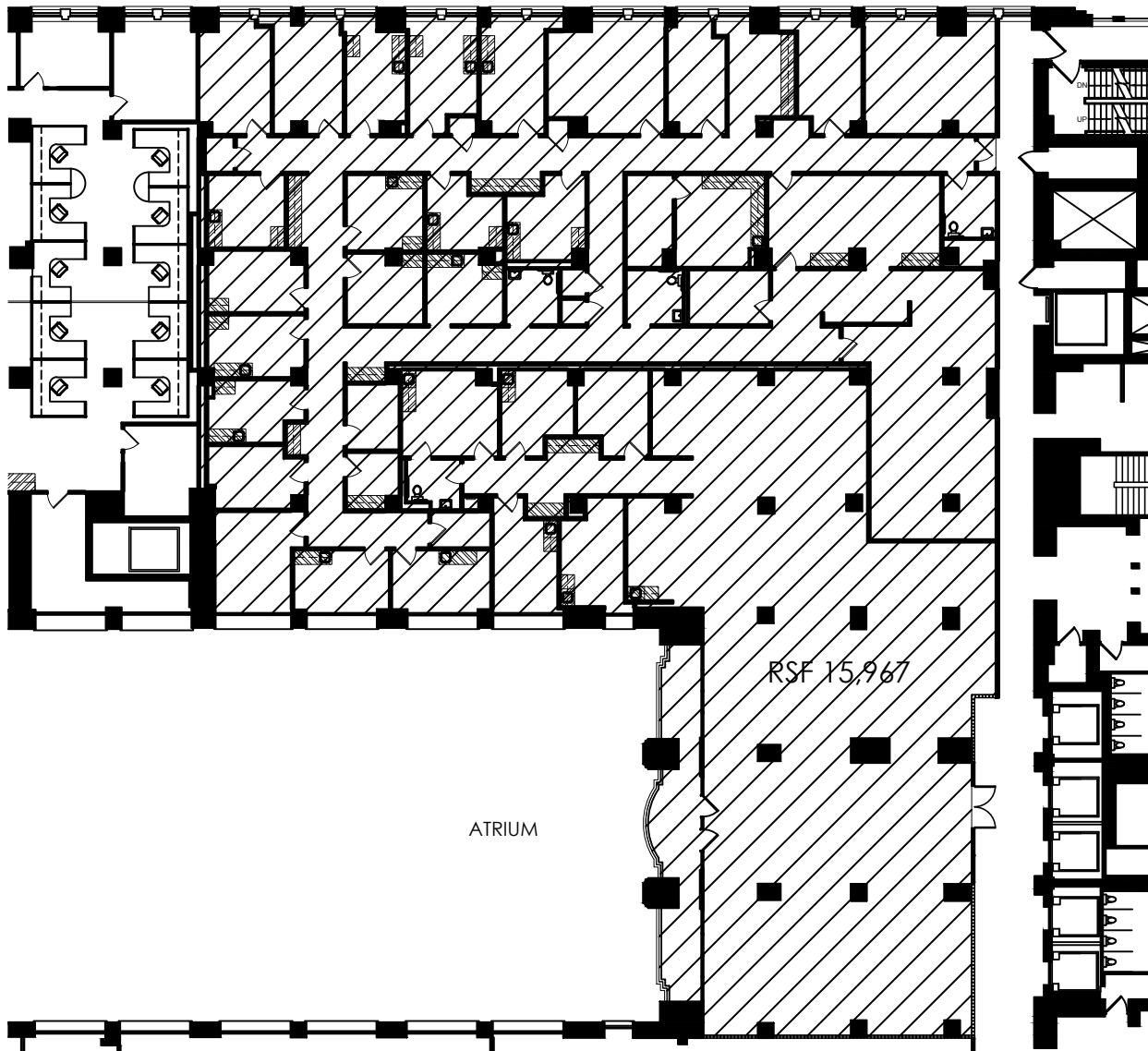


2nd Floor



601 WALNUT STREET
SUITE - 220

SANSOM STREET



DATE:	02.21.17
PROJECT:	17023.01
DRAWN BY:	DLI
CHECKED BY:	
SCALE:	Not to Scale
LOD:	9

L2Partridge
ARCHITECTURE | INTERIORS

1717 ARCH STREET, SUITE 4101
PHILADELPHIA, PA 19103
267.809.8400 T
215.557.7984 F
www.L2Partridge.com

OWNED BY:



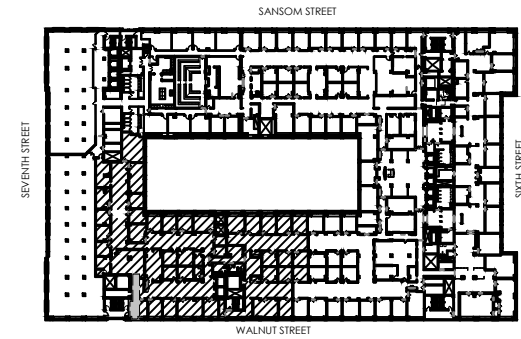
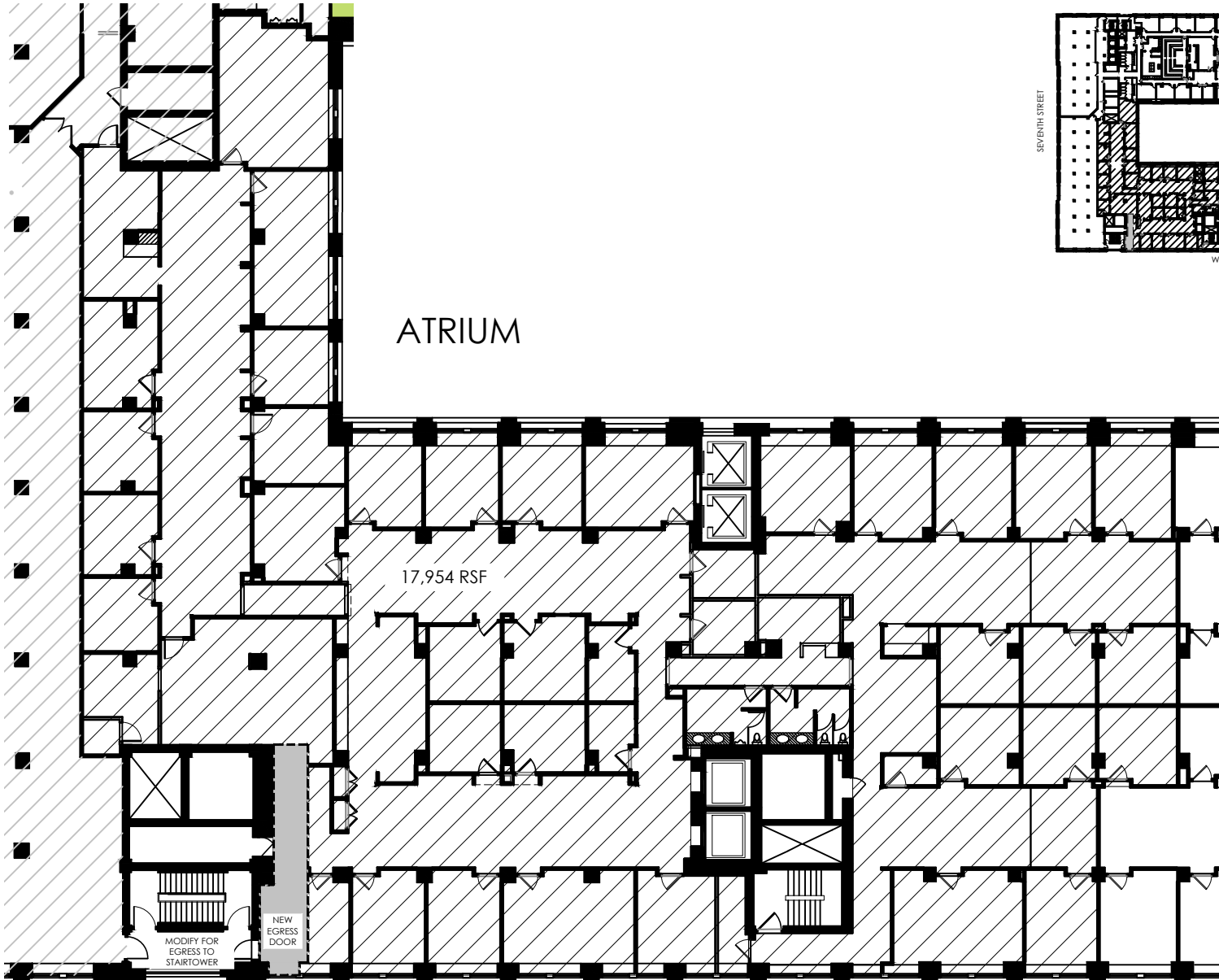
EXCLUSIVE LEASING BY:



2nd Floor



601 WALNUT STREET
SUITE - 430



DATE:	08.12.16
PROJECT:	16023.01
DRAWN BY:	DLI
CHECKED BY:	
SCALE:	Not to Scale
LOD:	54

L2Partridge
ARCHITECTURE | INTERIORS

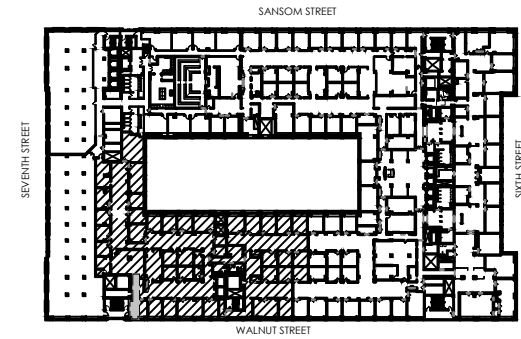
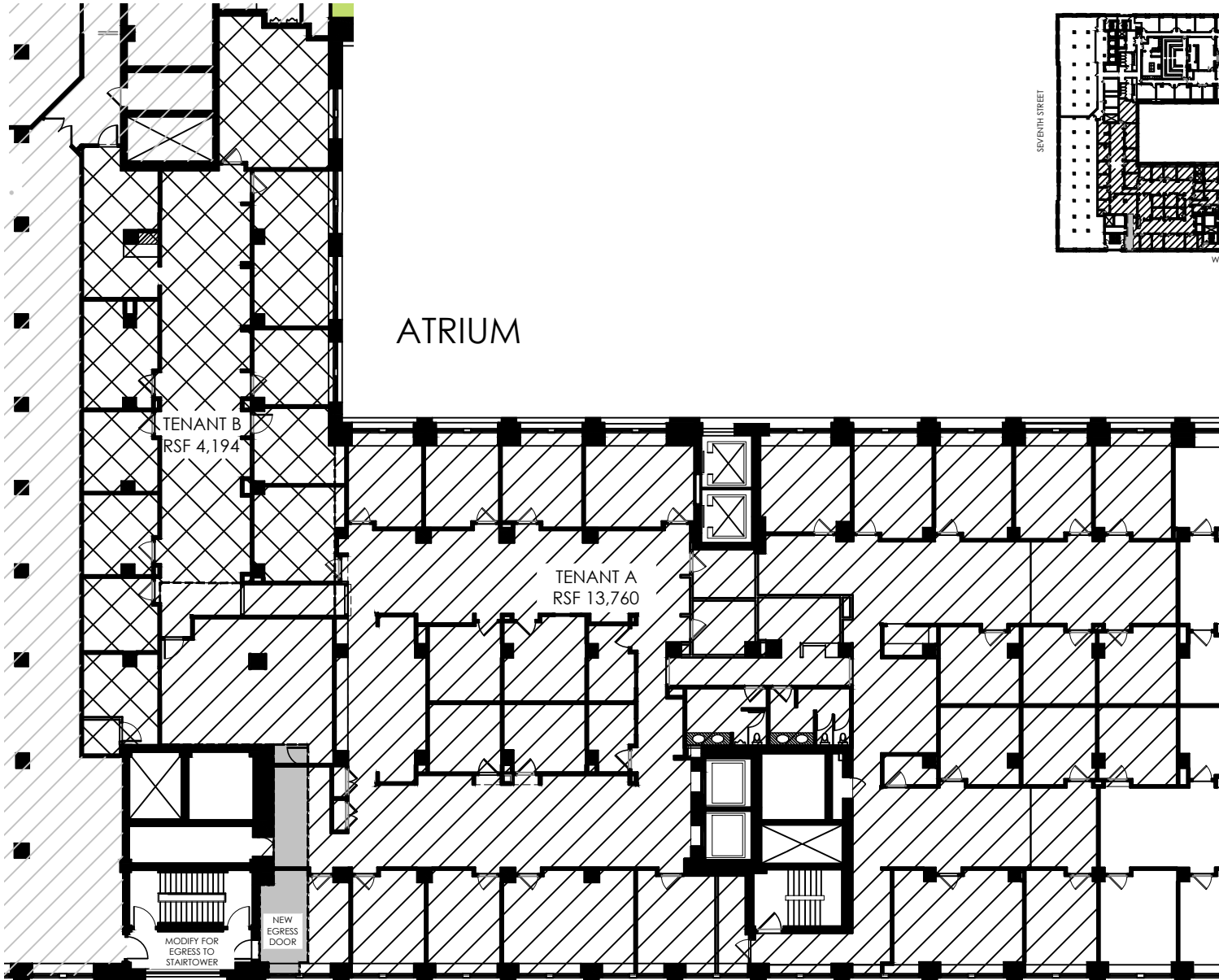
1717 ARCH STREET, SUITE 4101
PHILADELPHIA, PA 19103
267.809.8400 T
215.557.7984 F
www.L2Partridge.com



4th Floor



601 WALNUT STREET
SUITE - 430A & B



DATE:	08.12.16
PROJECT:	16023.01
DRAWN BY:	DLI
CHECKED BY:	
SCALE:	Not to Scale
LOD:	55

L2Partridge
ARCHITECTURE | INTERIORS

1717 ARCH STREET, SUITE 4101
PHILADELPHIA, PA 19103
267.809.8400 T
215.557.7984 F
www.L2Partridge.com

OWNED BY:



EXCLUSIVE LEASING BY:

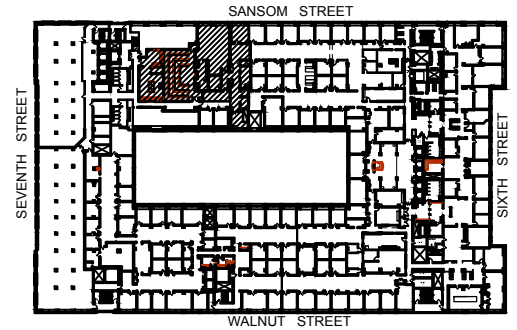
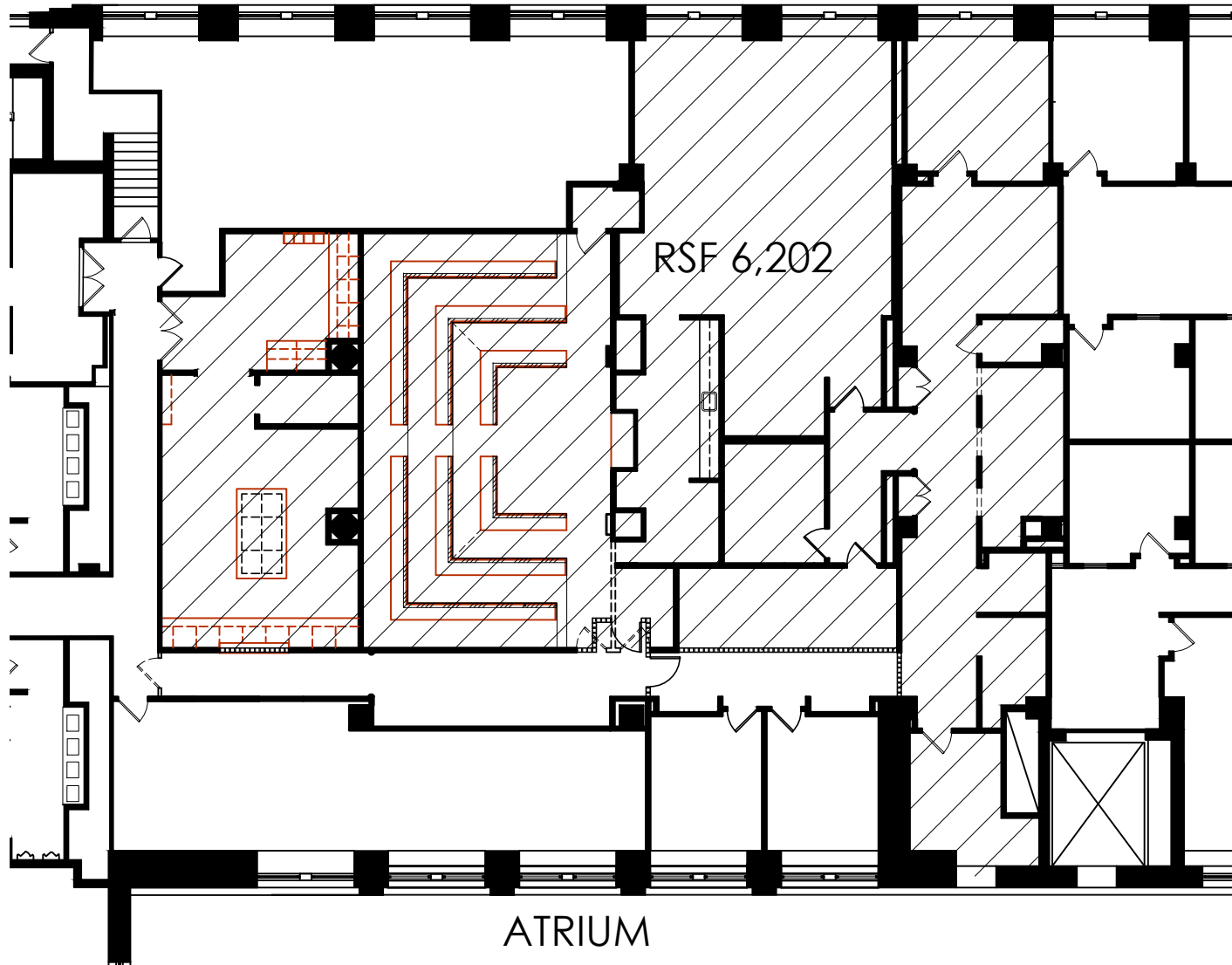


4th Floor



601 WALNUT STREET
SUITE - 435

SANSOM STREET



DATE:	08.04.16
PROJECT:	16023.01
DRAWN BY:	DLI
CHECKED BY:	
SCALE:	Not to Scale
LOD:	50

L2Partridge
ARCHITECTURE | INTERIORS

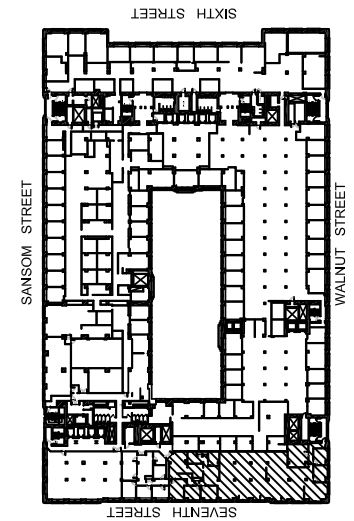
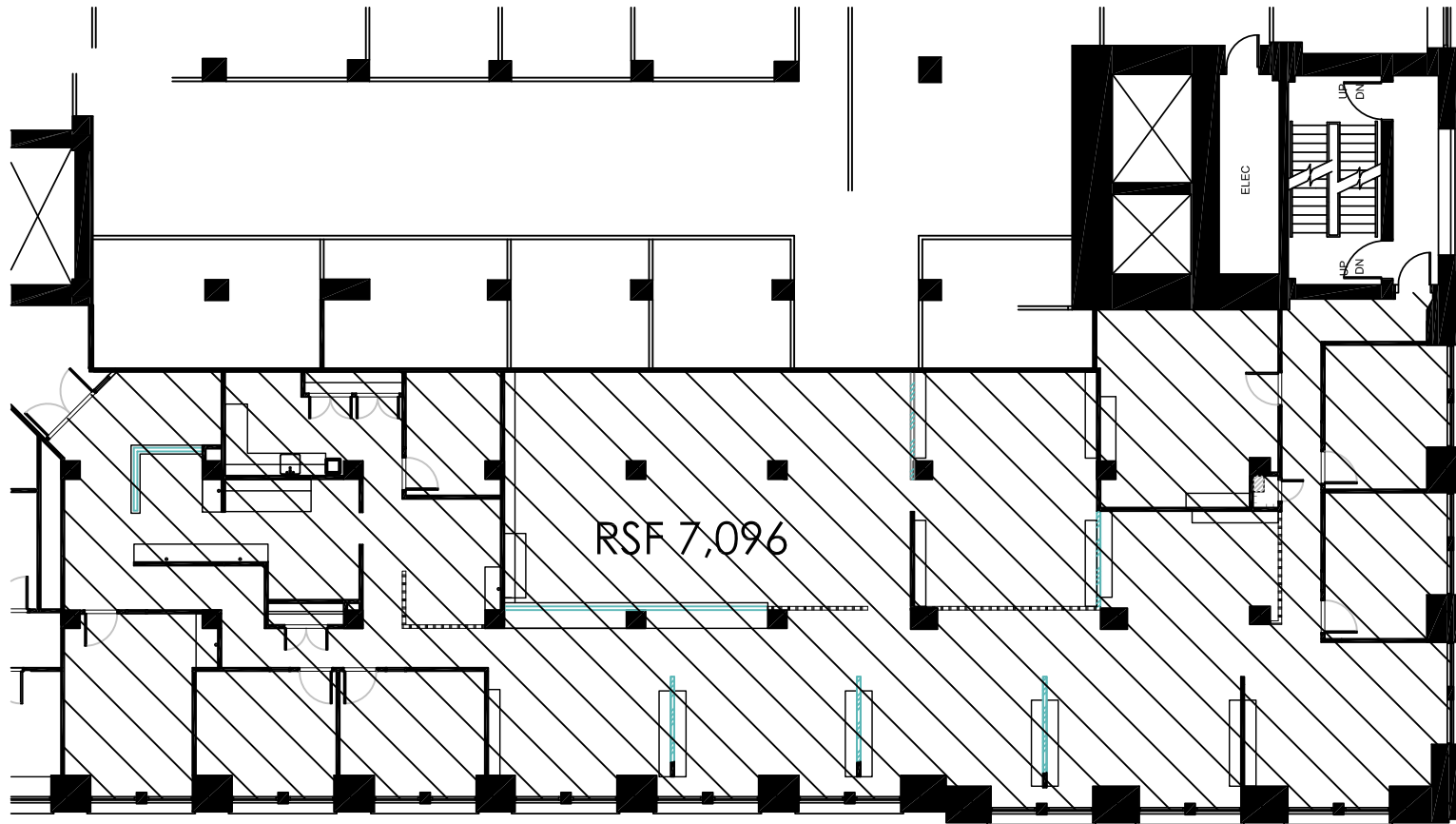
1717 ARCH STREET, SUITE 4101
PHILADELPHIA, PA 19103
267.809.8400 T
215.557.7984 F
www.L2Partridge.com



4th Floor



601 WALNUT STREET
SUITE - 450



SEVENTH STREET



DATE:	3.30.16
PROJECT:	16023.01
DRAWN BY:	DLI
CHECKED BY:	
SCALE:	Not to Scale
LOD:	26

L2Partridge
ARCHITECTURE | INTERIORS

1717 ARCH STREET, SUITE 4101
PHILADELPHIA, PA 19103
267.809.8400 T
215.557.7984 F
www.L2Partridge.com

OWNED BY:



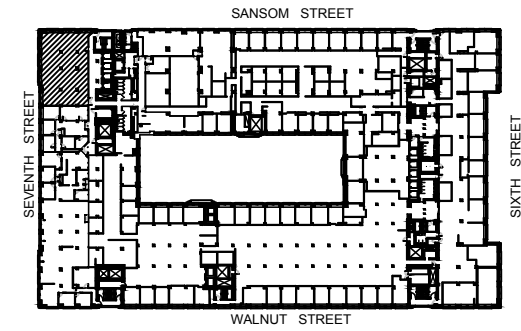
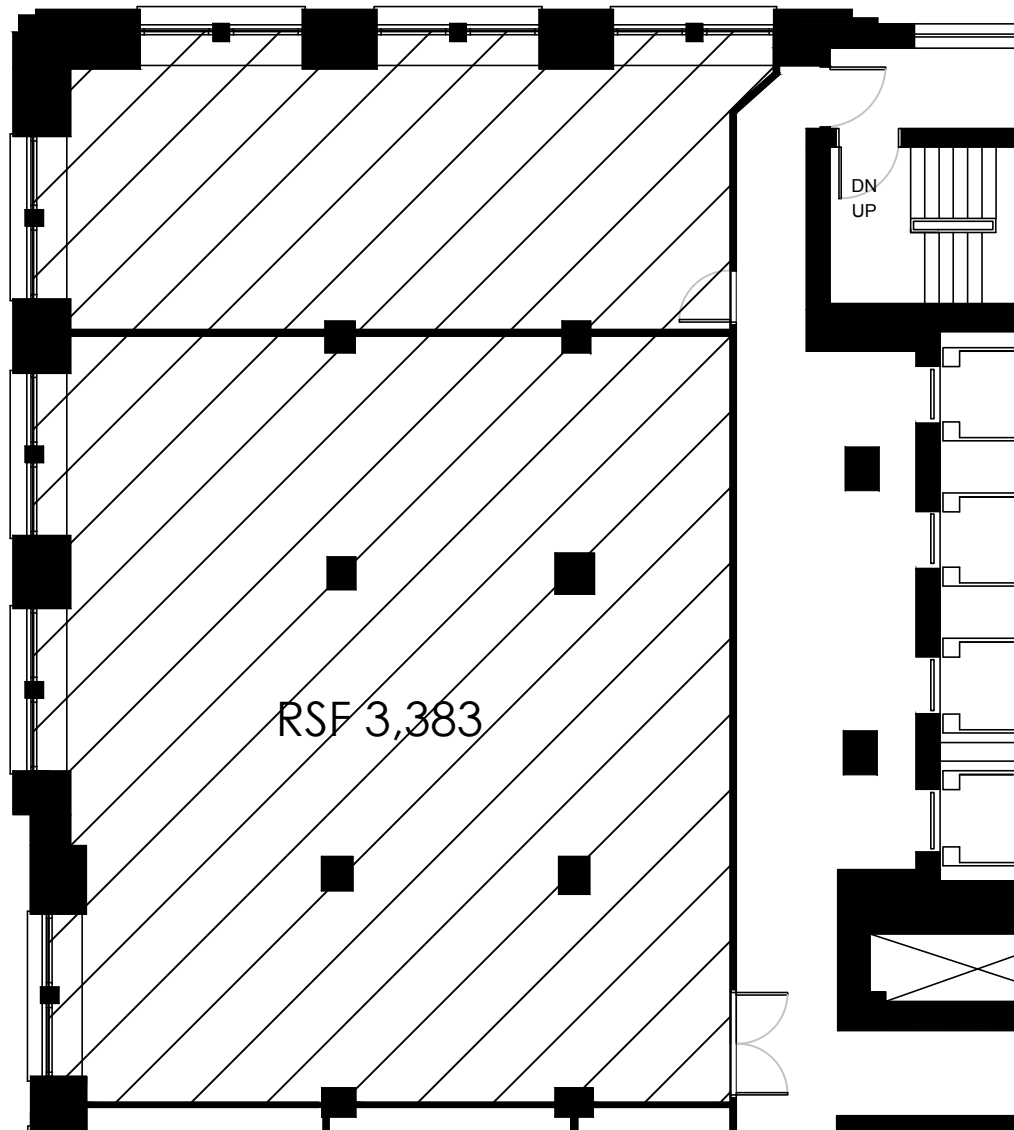
EXCLUSIVE LEASING BY:



4th Floor



601 WALNUT STREET
SUITE - 460



DATE:	12.09.16
PROJECT:	16023.01
DRAWN BY:	DLI
CHECKED BY:	
SCALE:	Not to Scale
LOD:	58

L2Partridge
ARCHITECTURE | INTERIORS

1717 ARCH STREET, SUITE 4101
PHILADELPHIA, PA 19103
267.809.8400 T
215.557.7984 F
www.L2Partridge.com

OWNED BY:



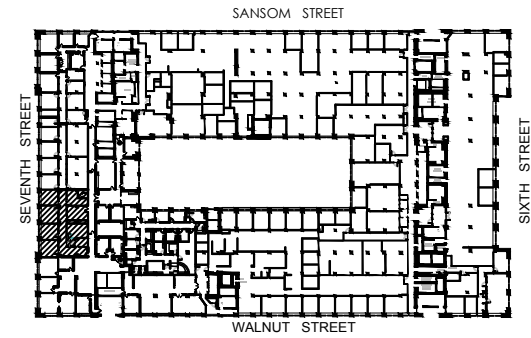
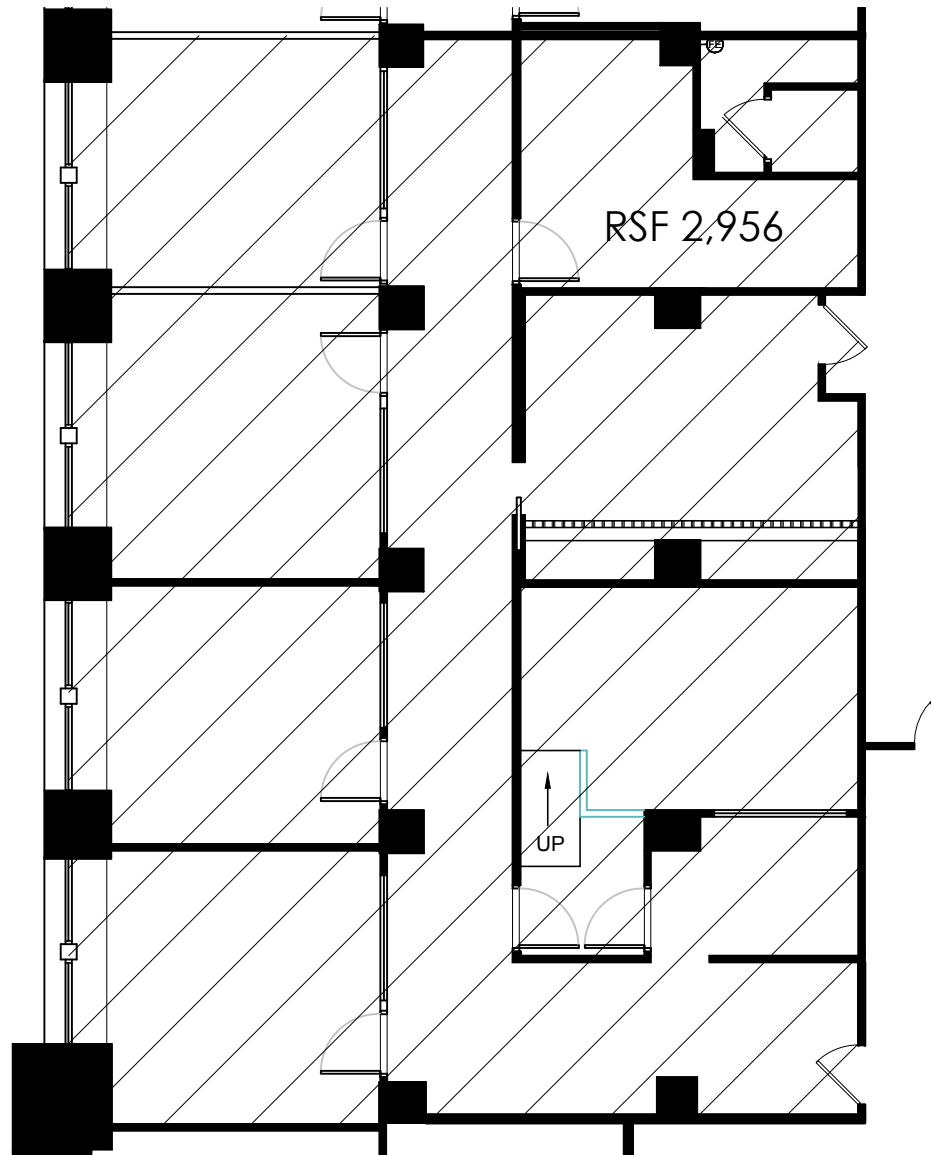
EXCLUSIVE LEASING BY:



4th Floor



601 WALNUT STREET
SUITE - 665



DATE:	8.04.16
PROJECT:	16023.01
DRAWN BY:	DLI
CHECKED BY:	
SCALE:	Not to Scale
LOD:	49

L2Partridge
ARCHITECTURE | INTERIORS

1717 ARCH STREET, SUITE 4101
PHILADELPHIA, PA 19103
267.809.8400 T
215.557.7984 F
www.L2Partridge.com

OWNED BY:



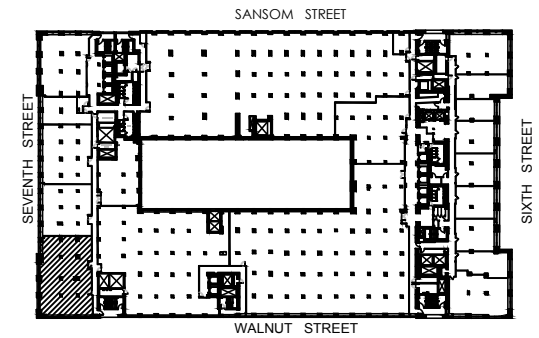
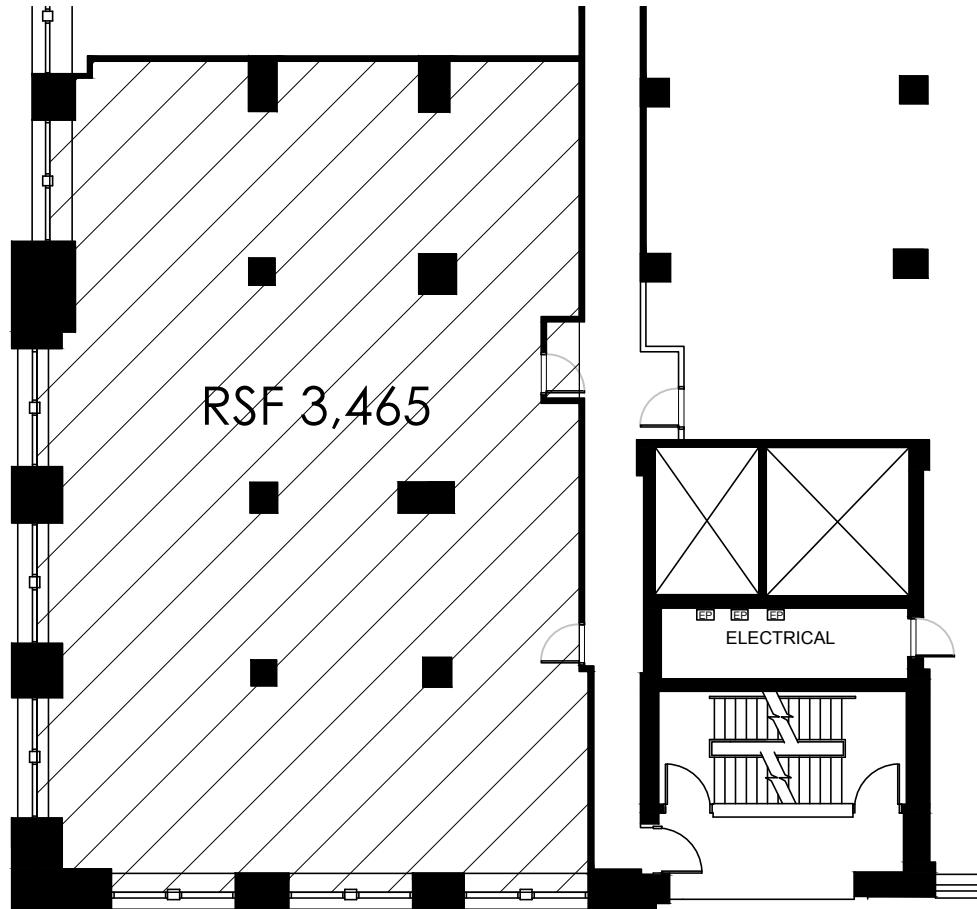
EXCLUSIVE LEASING BY:



6th Floor



601 WALNUT STREET
SUITE - 750



DATE:	8.04.16
PROJECT:	16023.01
DRAWN BY:	DLI
CHECKED BY:	
SCALE:	Not to Scale
LOD:	52

L2Partridge
ARCHITECTURE | INTERIORS

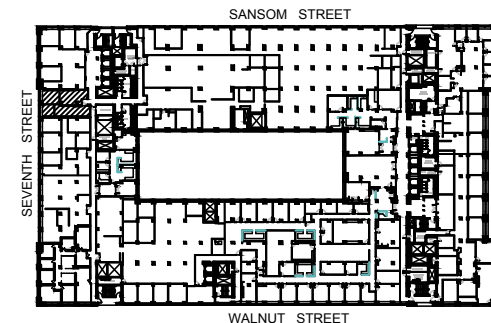
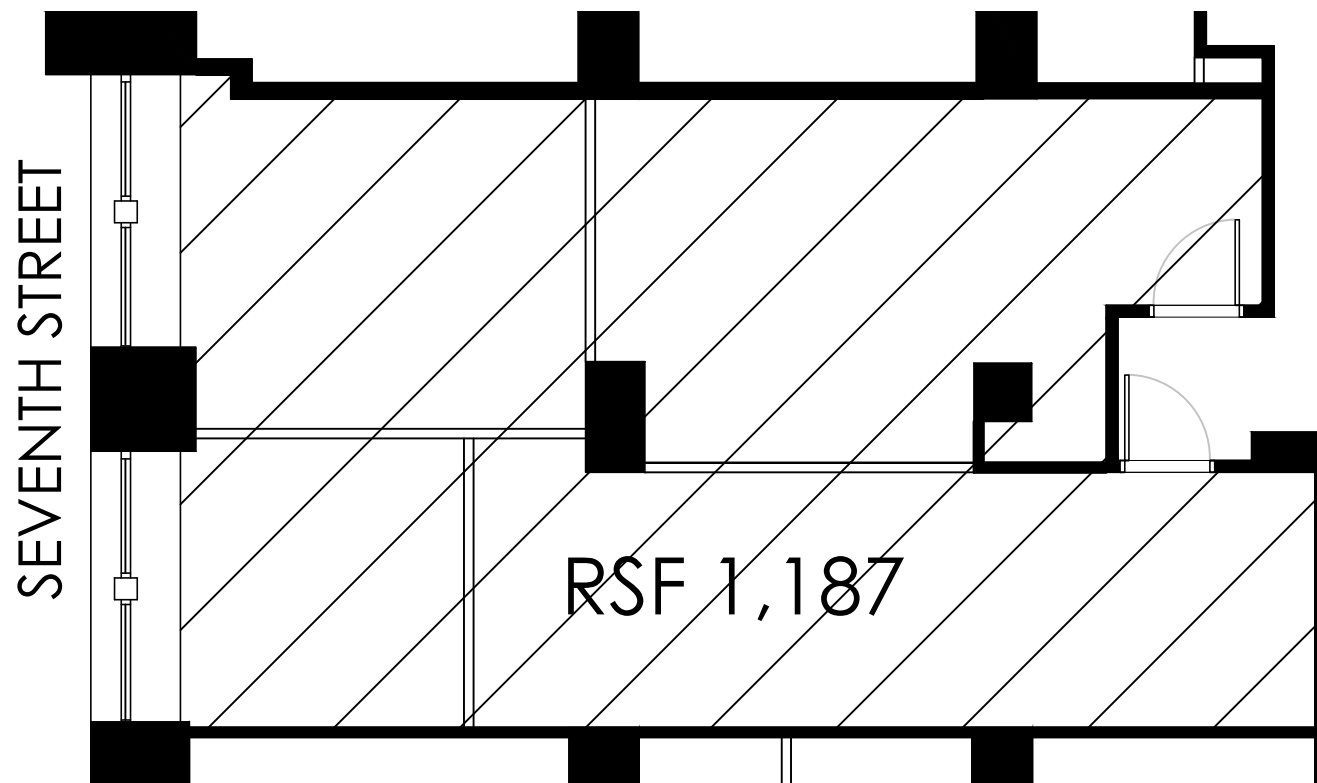
1717 ARCH STREET, SUITE 4101
PHILADELPHIA, PA 19103
267.809.8400 T
215.557.7984 F
www.L2Partridge.com



7th Floor



601 WALNUT STREET
SUITE - 775



DATE:	02.21.17
PROJECT:	17023.01
DRAWN BY:	DLI
CHECKED BY:	
SCALE:	Not to Scale
LOD:	13

L2Partridge
ARCHITECTURE | INTERIORS

1717 ARCH STREET, SUITE 4101
PHILADELPHIA, PA 19103
267.809.8400 T
215.557.7984 F
www.L2Partridge.com

OWNED BY:



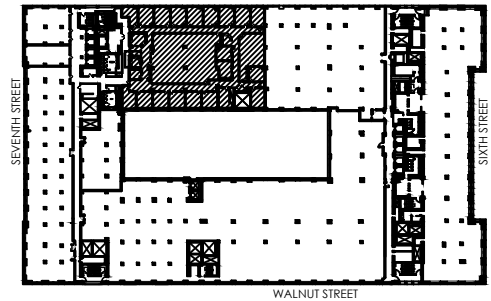
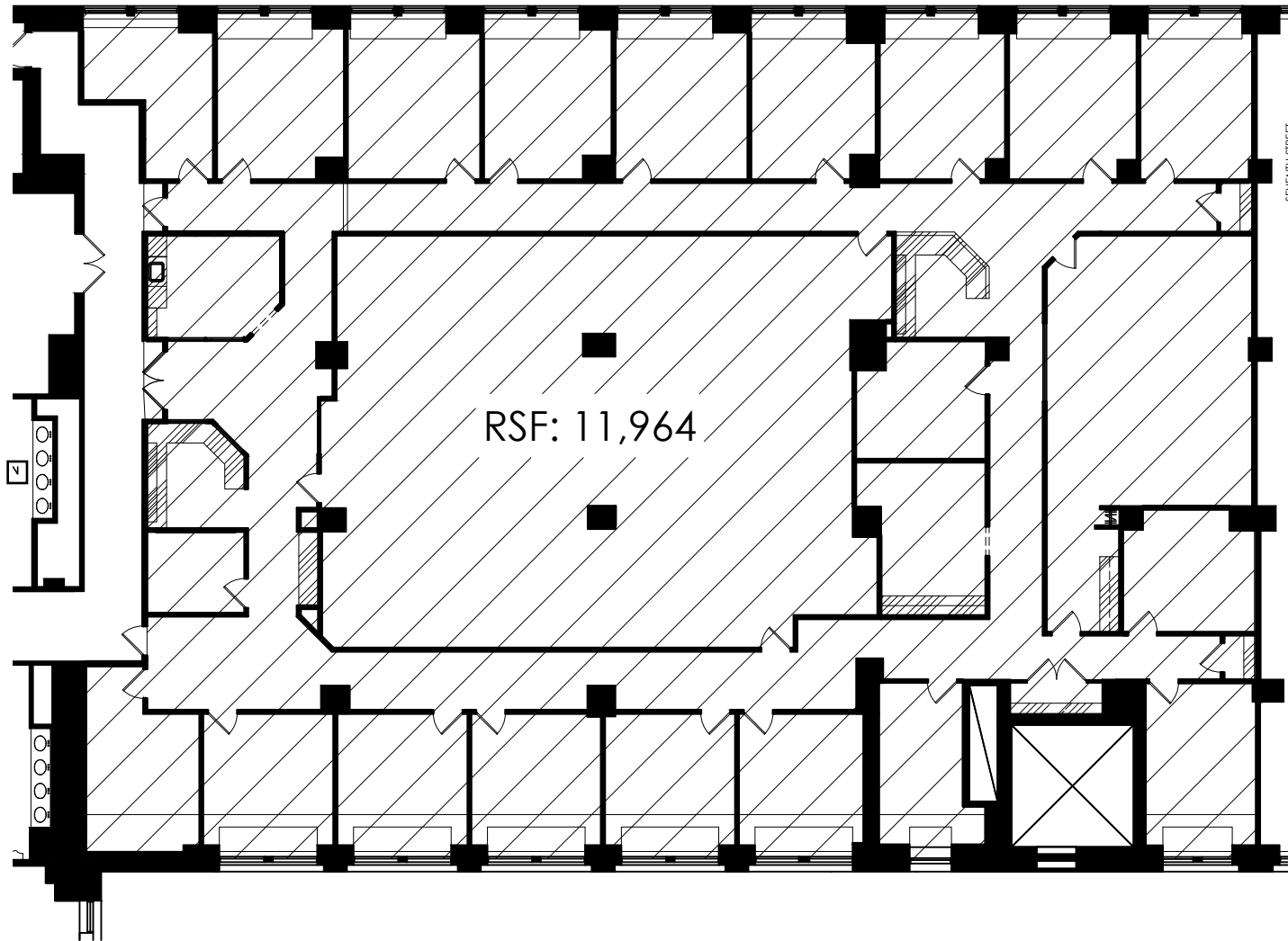
EXCLUSIVE LEASING BY:



2nd Floor



601 WALNUT STREET
SUITE - 975



DATE:	01.11.7
PROJECT:	17023.01
DRAWN BY:	DLI
CHECKED BY:	
SCALE:	Not to Scale
LOD:	2

L2Partridge
ARCHITECTURE | INTERIORS

1717 ARCH STREET, SUITE 4101
PHILADELPHIA, PA 19103
267.809.8400 T
215.557.7984 F
www.L2Partridge.com

OWNED BY:



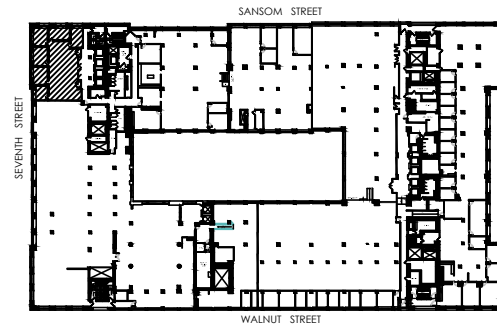
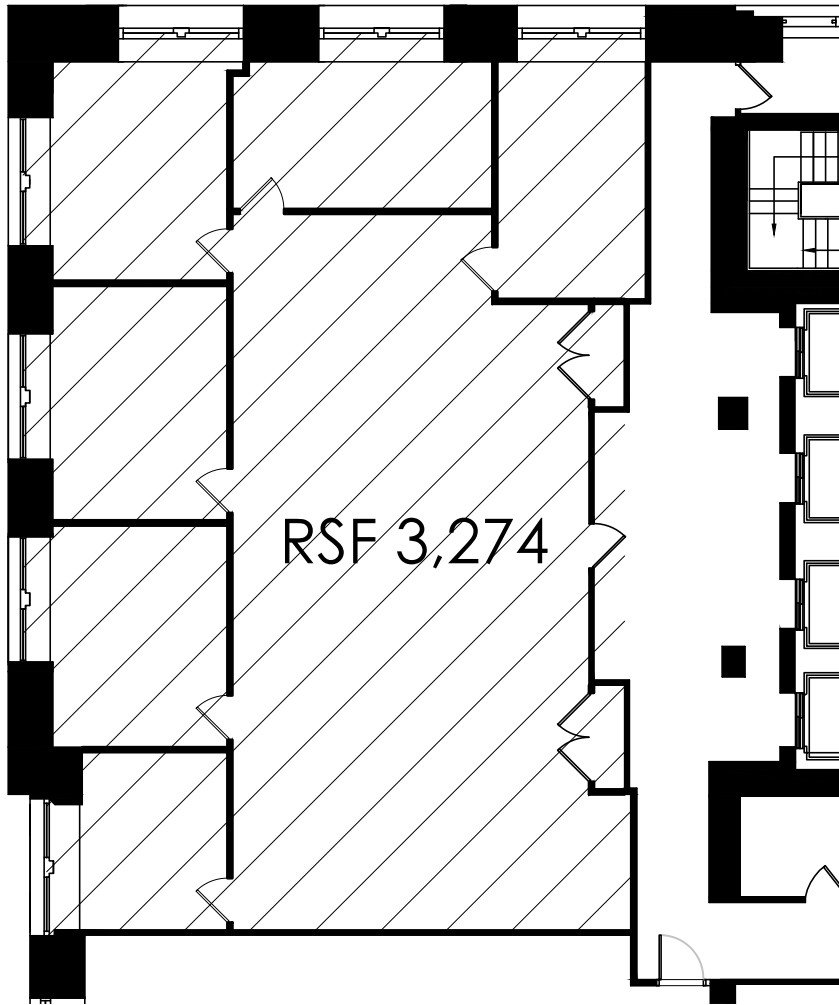
EXCLUSIVE LEASING BY:



9th Floor



601 WALNUT STREET
SUITE - 1060



DATE:	02.22.17
PROJECT:	17023.01
DRAWN BY:	DLI
CHECKED BY:	
SCALE:	Not to Scale
LOD:	12

L2Partridge
ARCHITECTURE | INTERIORS

1717 ARCH STREET, SUITE 4101
PHILADELPHIA, PA 19103
267.809.8400 T
215.557.7984 F
www.L2Partridge.com

OWNED BY:



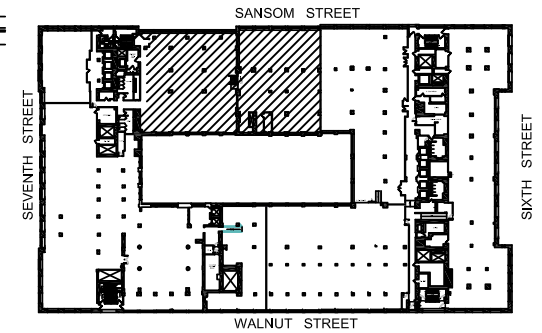
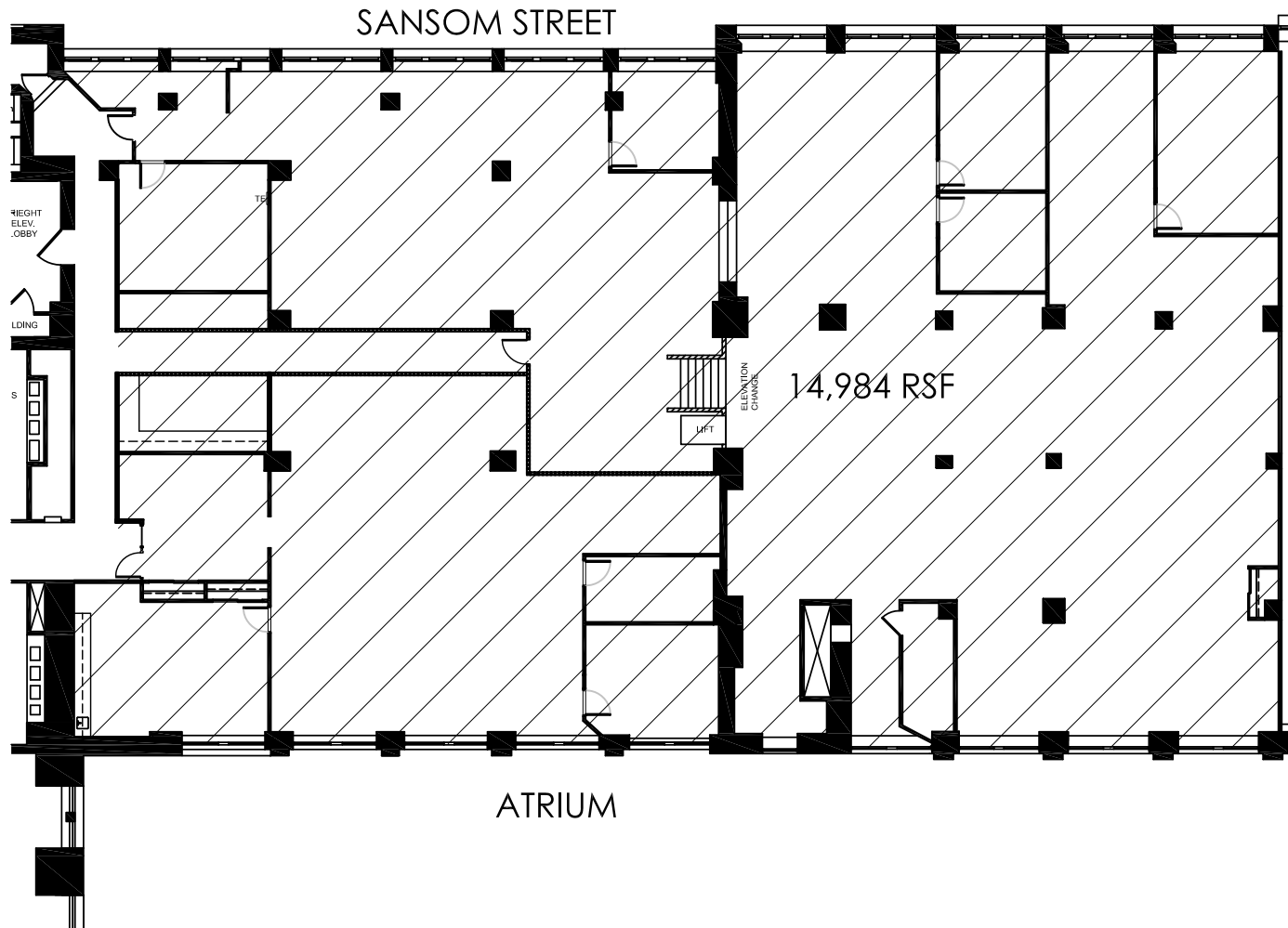
EXCLUSIVE LEASING BY:



10 Floor



601 WALNUT STREET
SUITE - 1075



DATE:	03.30.16
PROJECT:	16023.01
DRAWN BY:	DLI
CHECKED BY:	
SCALE:	Not to Scale
LOD:	25

L2Partridge
ARCHITECTURE | INTERIORS

1717 ARCH STREET, SUITE 4101
PHILADELPHIA, PA 19103
267.809.8400 T
215.557.7984 F
www.L2Partridge.com

OWNED BY:



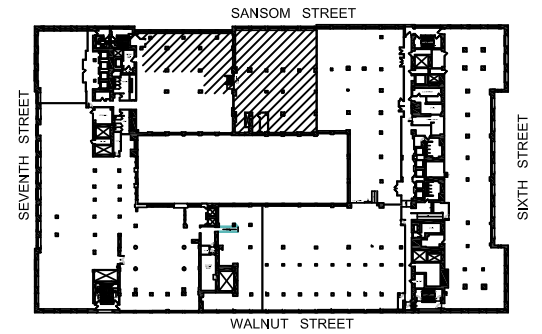
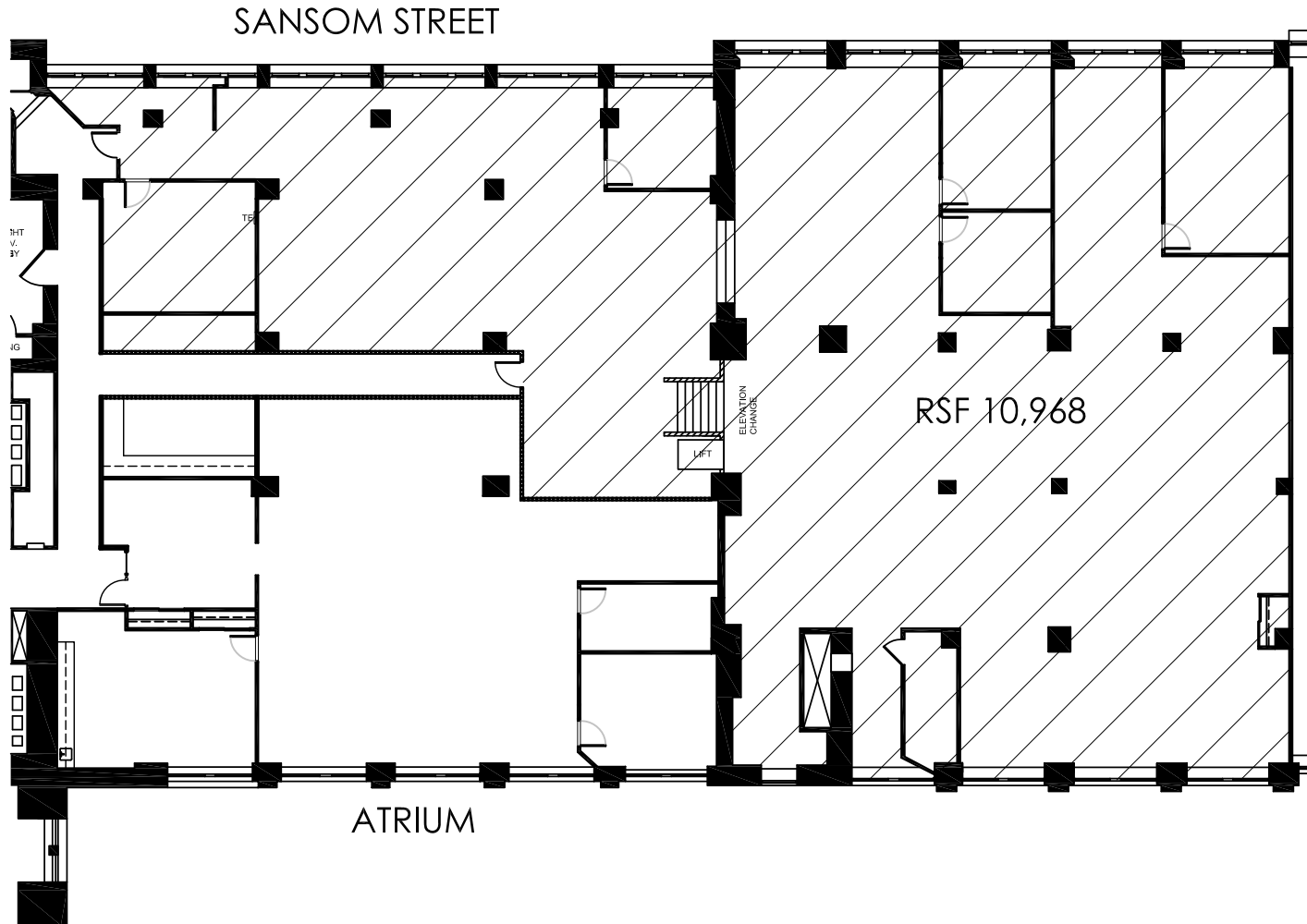
EXCLUSIVE LEASING BY:



10th Floor



601 WALNUT STREET
SUITE - 1075A



DATE:	03.30.16
PROJECT:	16023.01
DRAWN BY:	DLI
CHECKED BY:	
SCALE:	Not to Scale
LOD:	20

L2Partridge
ARCHITECTURE | INTERIORS

1717 ARCH STREET, SUITE 4101
PHILADELPHIA, PA 19103
267.809.8400 T
215.557.7984 F
www.L2Partridge.com

OWNED BY:



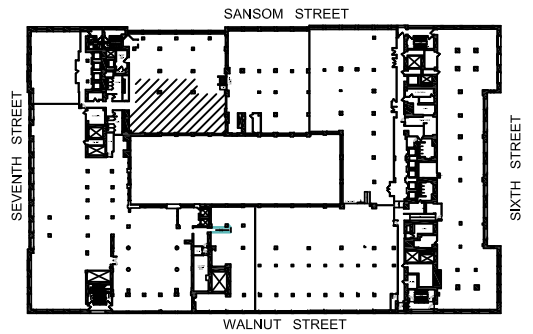
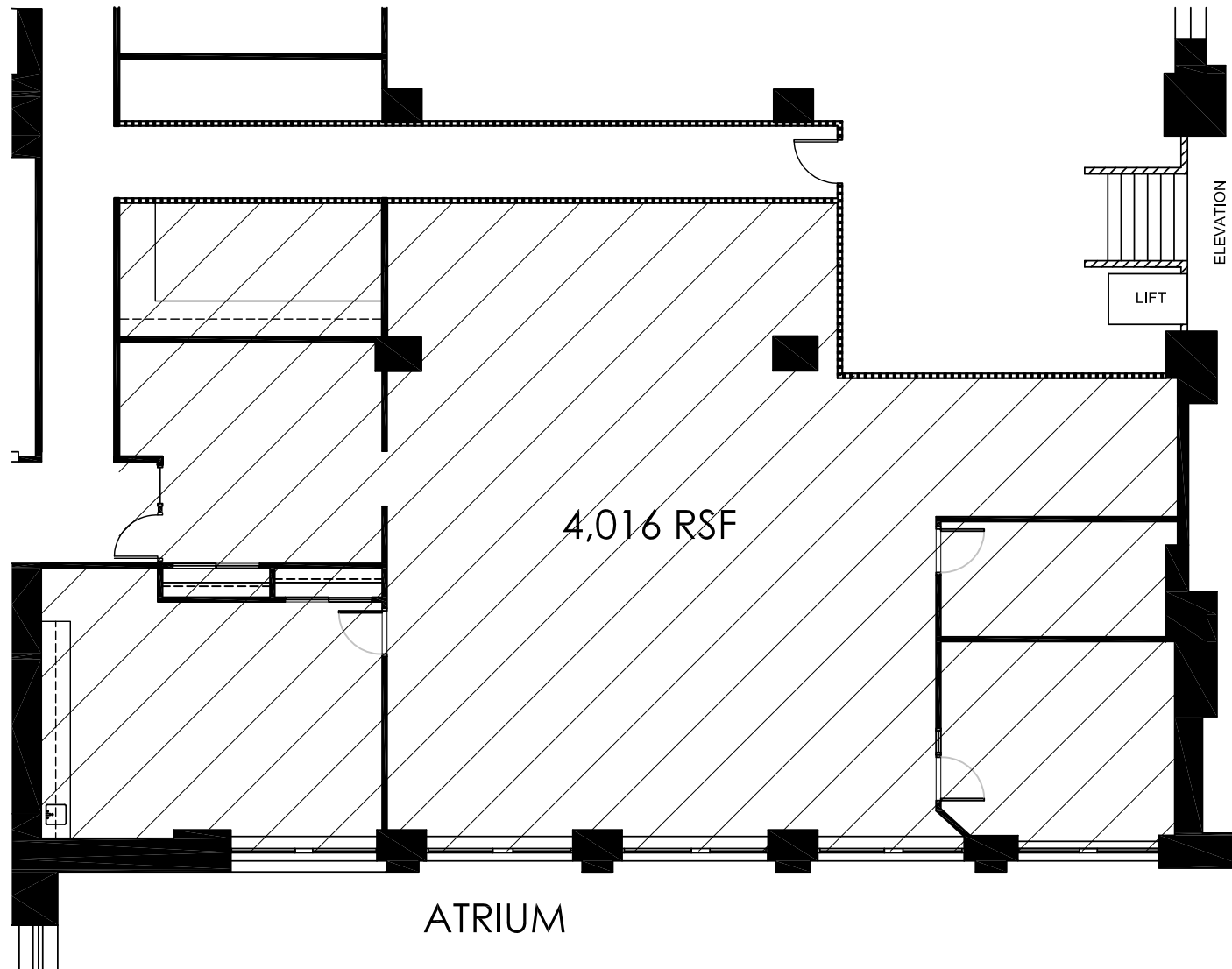
EXCLUSIVE LEASING BY:



10th Floor



601 WALNUT STREET
SUITE - 1075B



DATE:	03.30.16
PROJECT:	16023.01
DRAWN BY:	DLI
CHECKED BY:	
SCALE:	Not to Scale
LOD:	21

L2Partridge
ARCHITECTURE | INTERIORS

1717 ARCH STREET, SUITE 4101
PHILADELPHIA, PA 19103
267.809.8400 T
215.557.7984 F
www.L2Partridge.com

OWNED BY:



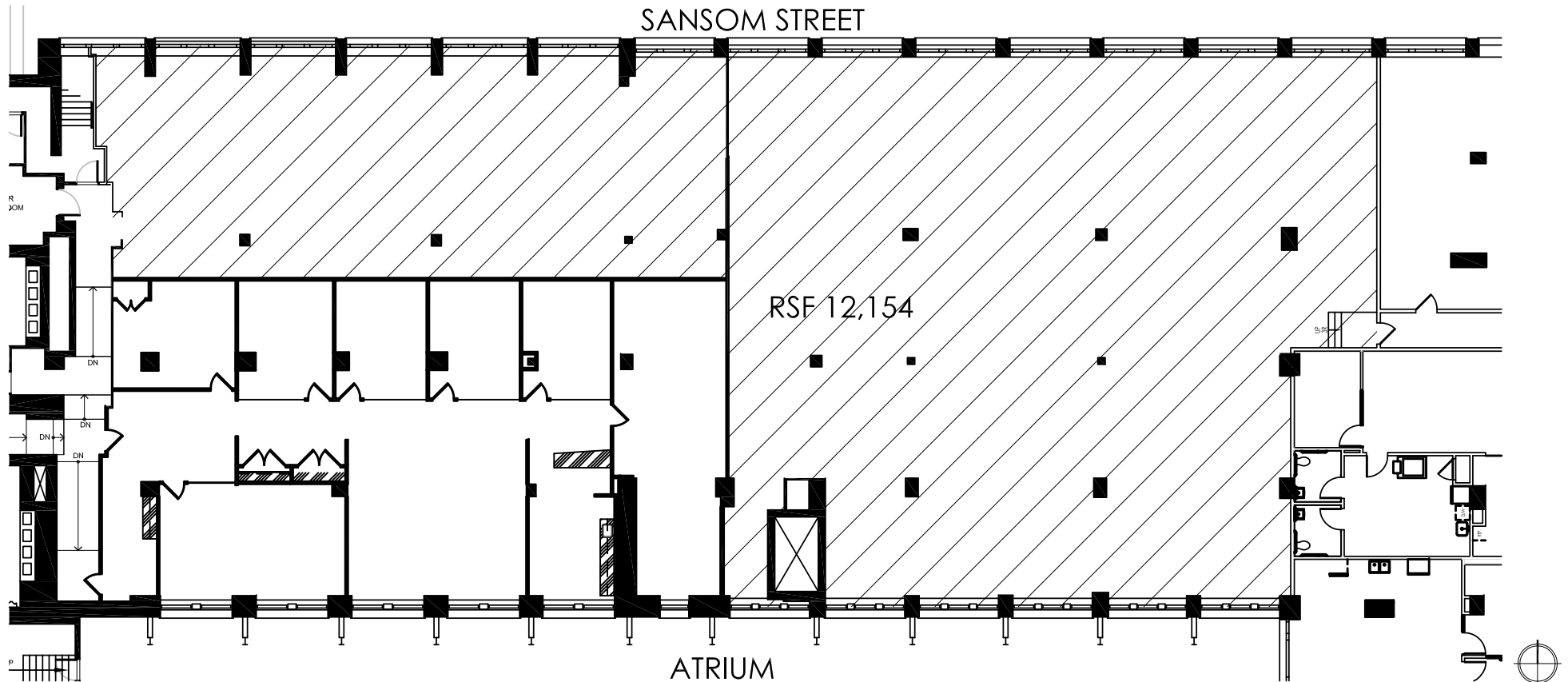
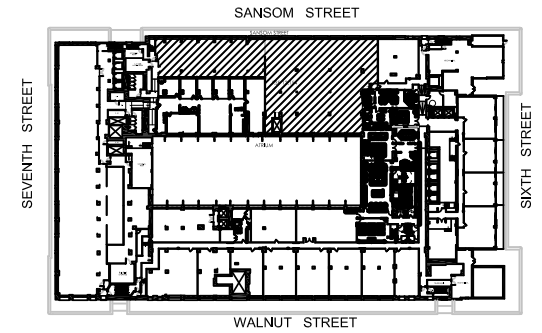
EXCLUSIVE LEASING BY:



10th Floor



601 WALNUT STREET
SUITE - 1165 & 1100



DATE: 03.30.16
PROJECT: 16023.01
DRAWN BY: DLI
CHECKED BY:
SCALE: Not to Scale
LOD: 30

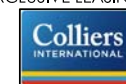
L2Partridge
ARCHITECTURE | INTERIORS

1717 ARCH STREET, SUITE 4101
PHILADELPHIA, PA 19103
267.809.8400 T
215.557.7984 F
www.L2Partridge.com

OWNED BY:



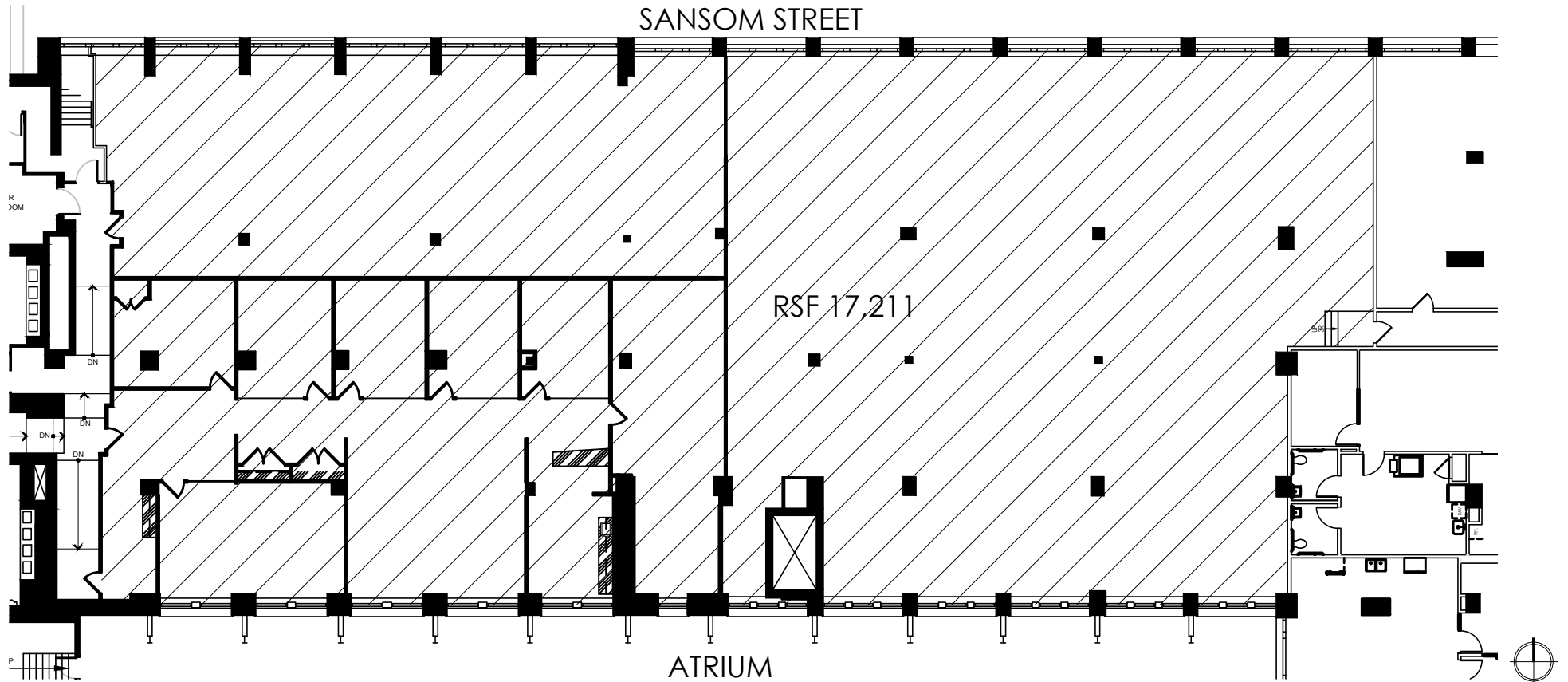
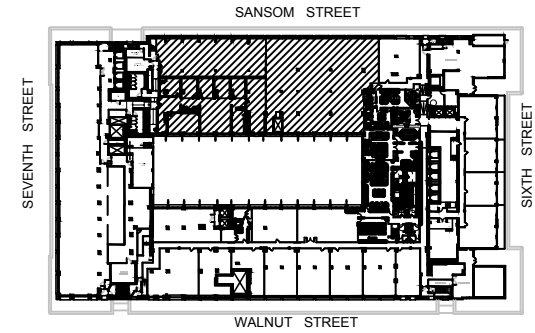
EXCLUSIVE LEASING BY:



11th Floor



601 WALNUT STREET
SUITE - 1165/1100/1170



DATE:	08.15.16
PROJECT:	16023.01
DRAWN BY:	DLI
CHECKED BY:	
SCALE:	Not to Scale
LOD:	53

L2Partridge
ARCHITECTURE | INTERIORS

1717 ARCH STREET, SUITE 4101
PHILADELPHIA, PA 19103
267.809.8400 T
215.557.7984 F
www.L2Partridge.com



11th Floor