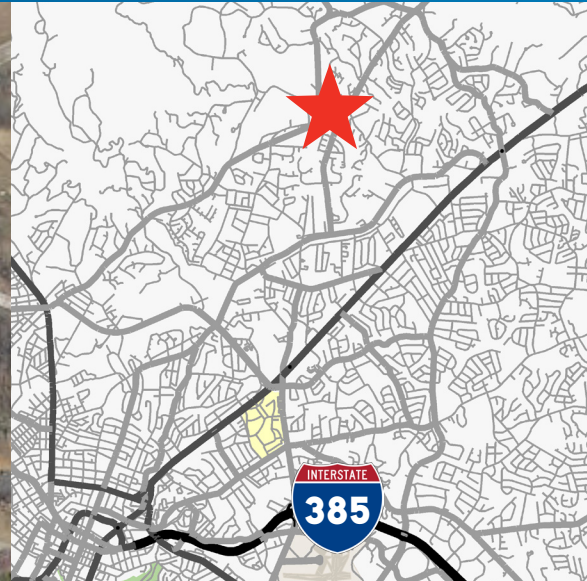


±0.616 ACRES FOR SALE > VACANT LAND > PARIS MOUNTAIN



# State Park Road

AT E. MOUNTAIN CREEK ROAD. GREENVILLE, SC 29609



## State Park at E. Mountain Creek > Vacant Land

Close proximity to Paris Mountain State Park and the Pebble Creek Community.

## Property Attributes

- > ±0.616 acres
- > C-1 Zoning
- > All utilities available
- > Tax Map #: P025000200900
- > **Sales Price: \$225,000**

## Demographics (2017)

	1-MILE	3-MILE	5-MILE
POPULATION	3,917	39,978	129,813
AVERAGE HH INCOME	\$78,091	\$68,822	\$62,169

**\*DISCLOSURE:** Property is an Agent owned listing.

## Contact Us

FRANK HAMMOND, CCIM, CPM

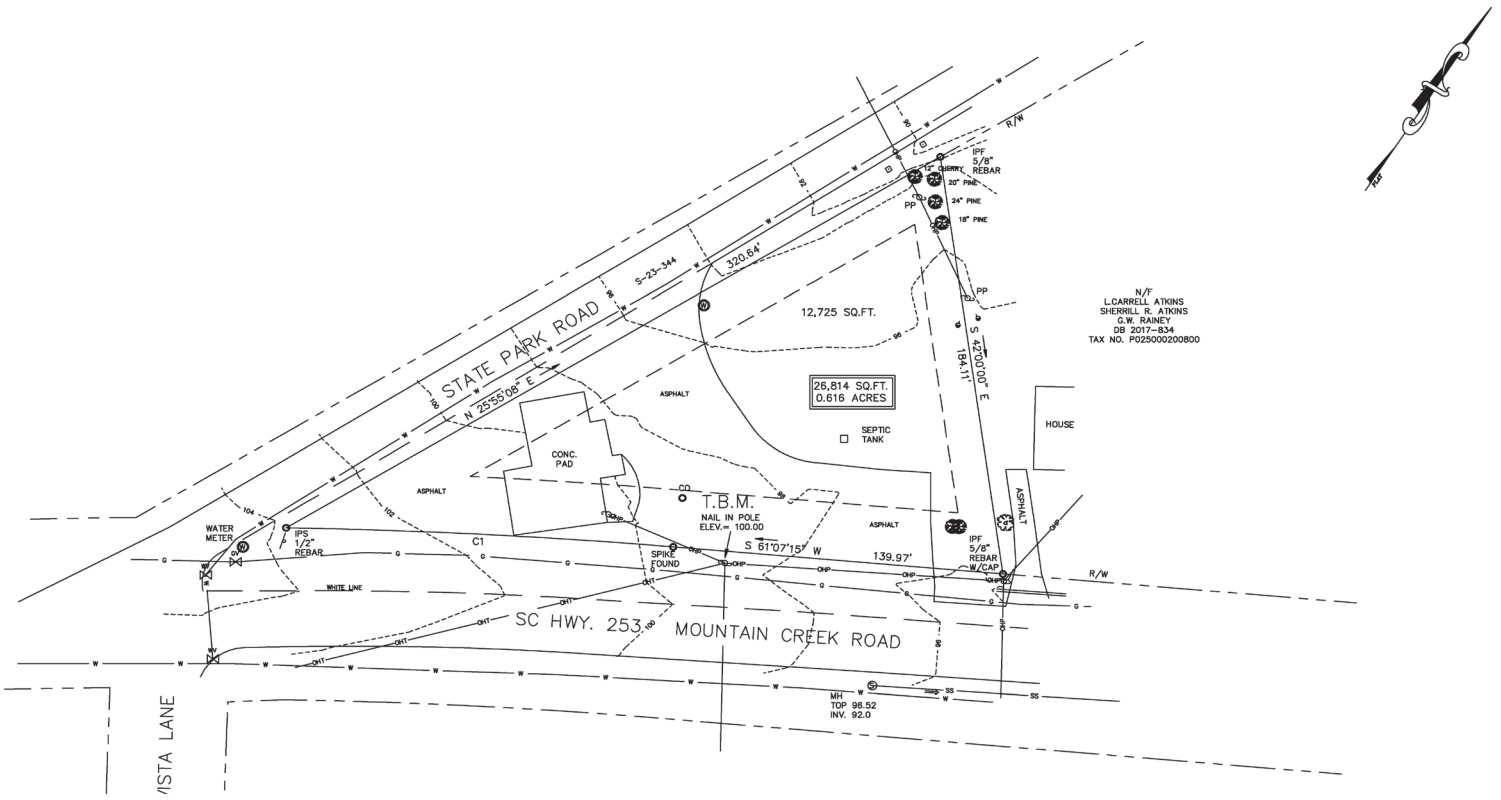
864 527 5451 DIRECT

864 297 4950 MAIN

[frank.hammond@colliers.com](mailto:frank.hammond@colliers.com)

COLLIERS INTERNATIONAL  
55 E. Camperdown Way, Suite 200  
Greenville, South Carolina 29601  
[www.colliers.com/southcarolina](http://www.colliers.com/southcarolina)

# State Park Road @ E. Mountain Creek Road Survey



This document has been prepared by Colliers International for advertising and general information only. Colliers International makes no guarantees, representations or warranties of any kind, expressed or implied, regarding the information including, but not limited to, warranties of content, accuracy and reliability. Any interested party should undertake their own inquiries as to the accuracy of the information. Colliers International excludes unequivocally all inferred or implied terms, conditions and warranties arising out of this document and excludes all liability for loss and damages arising there from. This publication is the copyrighted property of Colliers International and/or its licensors(s). ©2016. All rights reserved.