

FOR LEASE > RETAIL

FREESTANDING BUILDING

18676 EUREKA ROAD | SOUTHGATE, MICHIGAN



TRAFFIC COUNTS OF 33,000

> PROPERTY HIGHLIGHTS

- 6,400 SF Building Available
- Great Visibility with Pylon Signage
- Located Across the Street from ABC Warehouse & Aldi's
- Just Minutes from Southland Mall & Walmart

DEMOGRAPHICS	Category	1 Mile	3 Mile	5 Mile
	Population	8,001	83,328	217,000
	Average Income	\$63,204	\$61,656	\$62,006
	Households	3,593	35,612	90,721

COLLIERS INTERNATIONAL

2 Corporate Drive | Suite 300

Southfield, Michigan 48076

For More Information Call:

SHERIDAN BURTON

PHONE 248 540 1000 EXT 1852

EMAIL sheridan.burton@colliers.com



colliers.com/detroit



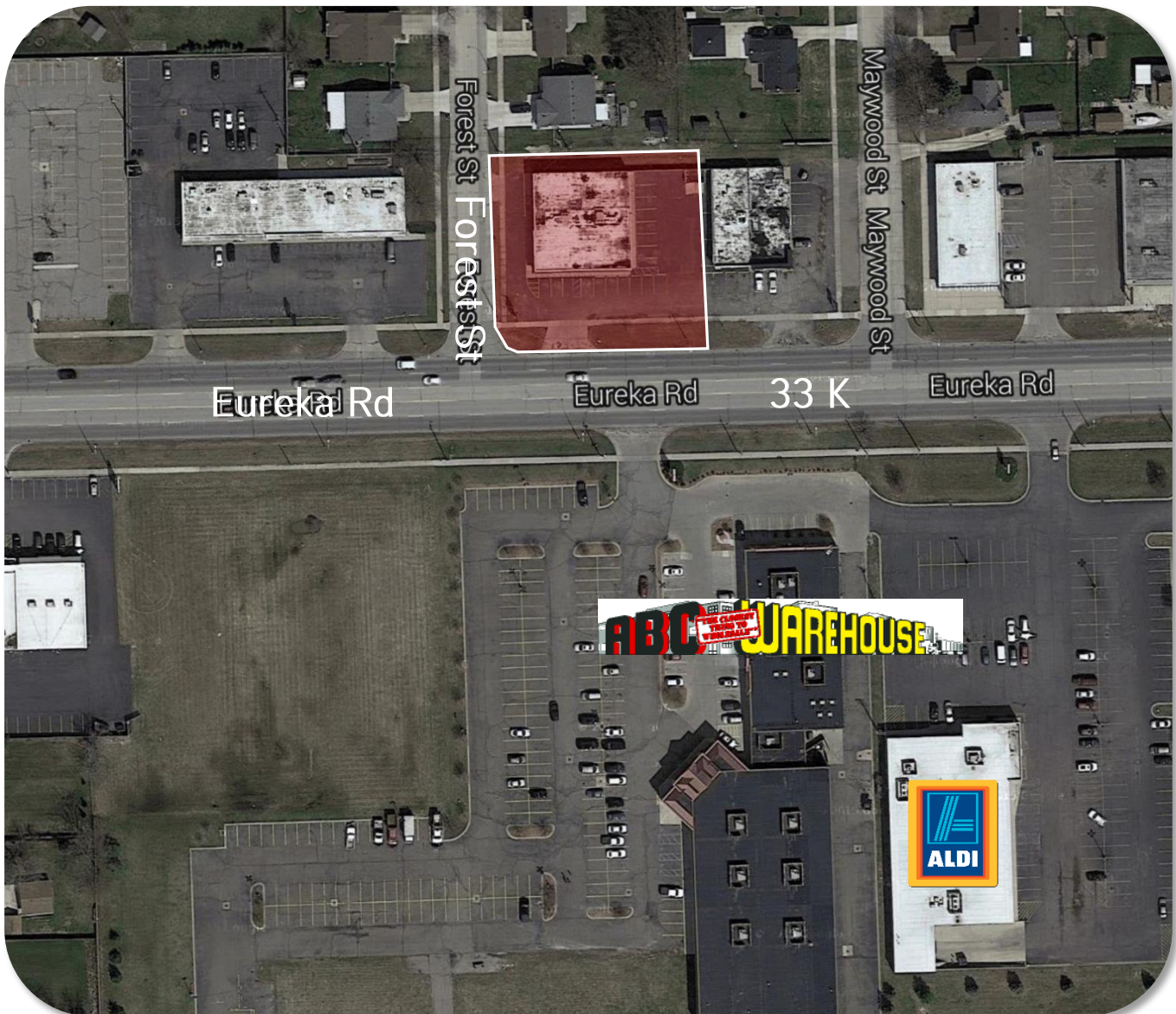
FOR LEASE > RETAIL

FREESTANDING BUILDING

18676 EUREKA ROAD | SOUTHGATE, MICHIGAN



> AERIAL MAP



SHERIDAN BURTON
PHONE 248 540 1000 EXT 1852
EMAIL sheridan.burton@colliers.com



COLLIERS INTERNATIONAL
2 Corporate Dr. | Suite 300
Southfield, Michigan 48076

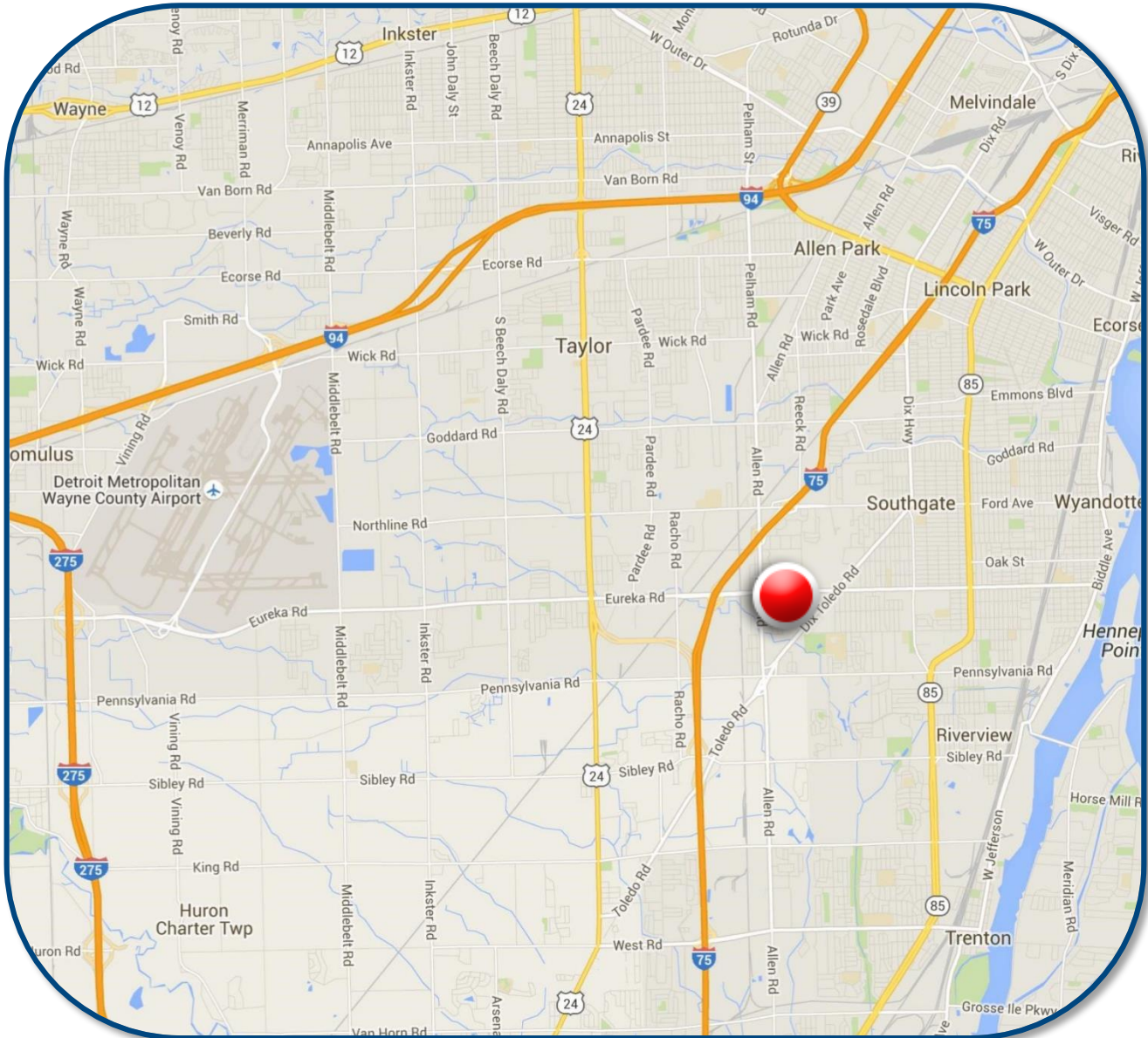
FOR LEASE > RETAIL

FREESTANDING BUILDING

18676 EUREKA ROAD | SOUTHGATE, MICHIGAN



> LOCATION MAP



SHERIDAN BURTON

PHONE 248 540 1000 EXT 1852

EMAIL sheridan.burton@colliers.com



COLLIERS INTERNATIONAL

2 Corporate Dr. | Suite 300
Southfield, Michigan 48076

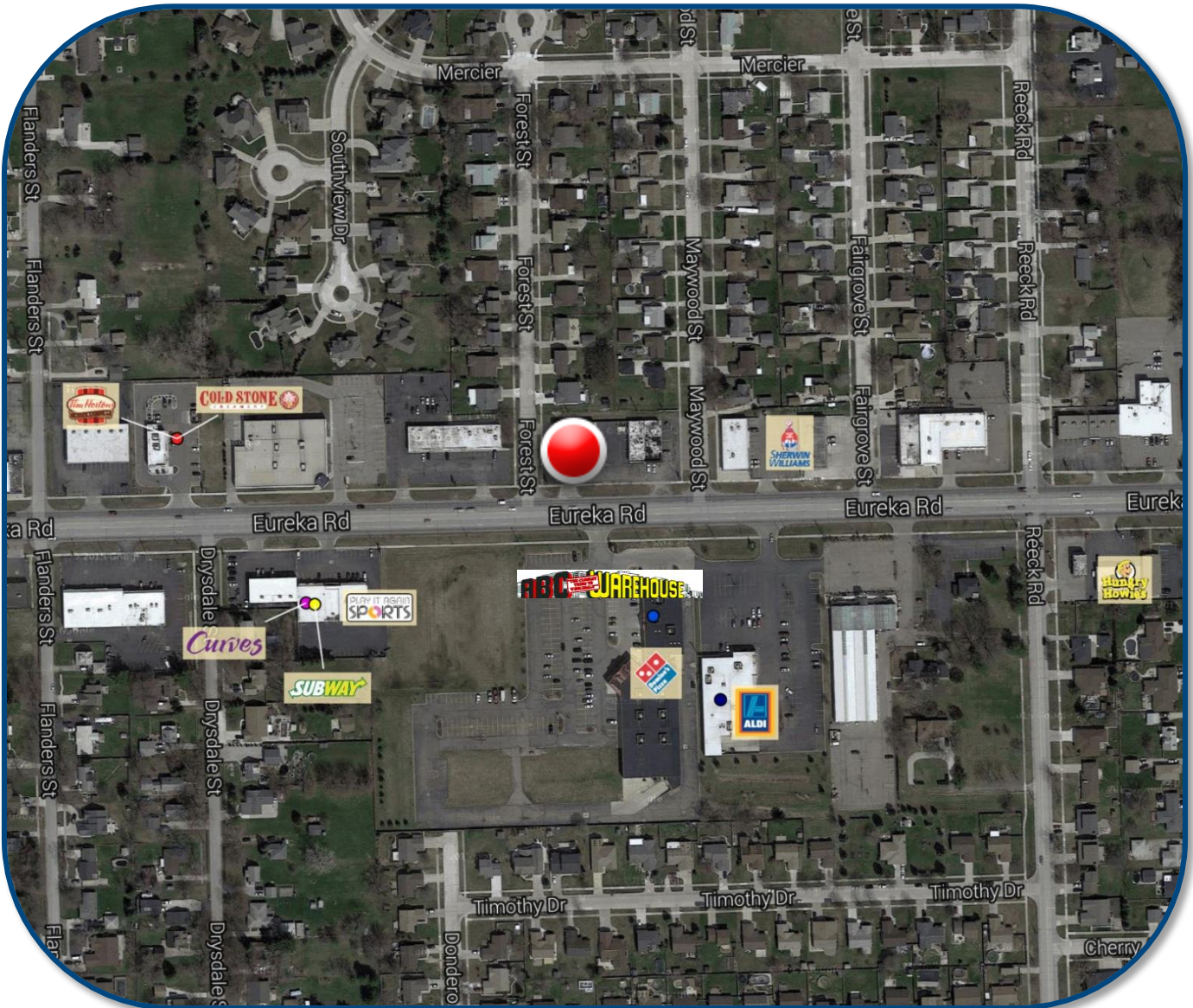
FOR LEASE > RETAIL

FREESTANDING BUILDING

18676 EUREKA ROAD | SOUTHGATE, MICHIGAN



> AREA MERCHANT MAP



SHERIDAN BURTON
PHONE 248 540 1000 EXT 1852
EMAIL sheridan.burton@colliers.com



COLLIERS INTERNATIONAL
2 Corporate Dr. | Suite 300
Southfield, Michigan 48076

SUMMARY PROFILE

2000-2010 Census, 2016 Estimates with 2021 Projections

Calculated using Weighted Block Centroid from Block Groups



Lat/Lon: 42.1992/-83.2223

RS1

18676 Eureka Rd		1 mi radius	3 mi radius	5 mi radius
Southgate, MI 48195-2925				
POPULATION	2016 Estimated Population	8,001	83,328	217,000
	2021 Projected Population	7,758	79,875	207,937
	2010 Census Population	8,586	89,858	233,771
	2000 Census Population	8,574	91,869	240,516
	Projected Annual Growth 2016 to 2021	-0.6%	-0.8%	-0.8%
	Historical Annual Growth 2000 to 2016	-0.4%	-0.6%	-0.6%
	2016 Median Age	41.2	39.6	38.7
HOUSEHOLDS	2016 Estimated Households	3,593	35,612	90,721
	2021 Projected Households	3,538	34,776	88,616
	2010 Census Households	3,740	37,225	94,803
	2000 Census Households	3,561	37,514	96,256
	Projected Annual Growth 2016 to 2021	-0.3%	-0.5%	-0.5%
	Historical Annual Growth 2000 to 2016	0.1%	-0.3%	-0.4%
RACE AND ETHNICITY	2016 Estimated White	83.0%	83.3%	83.0%
	2016 Estimated Black or African American	9.7%	9.9%	10.0%
	2016 Estimated Asian or Pacific Islander	3.1%	2.6%	2.1%
	2016 Estimated American Indian or Native Alaskan	0.4%	0.5%	0.5%
	2016 Estimated Other Races	3.7%	3.8%	4.4%
	2016 Estimated Hispanic	7.3%	6.6%	7.5%
INCOME	2016 Estimated Average Household Income	\$63,204	\$61,656	\$62,006
	2016 Estimated Median Household Income	\$52,307	\$52,699	\$52,723
	2016 Estimated Per Capita Income	\$28,408	\$26,437	\$25,974
EDUCATION (AGE 25+)	2016 Estimated Elementary (Grade Level 0 to 8)	3.8%	3.4%	3.6%
	2016 Estimated Some High School (Grade Level 9 to 11)	7.4%	8.5%	9.0%
	2016 Estimated High School Graduate	35.8%	34.2%	34.6%
	2016 Estimated Some College	25.8%	26.1%	25.6%
	2016 Estimated Associates Degree Only	11.1%	9.8%	9.5%
	2016 Estimated Bachelors Degree Only	10.9%	11.7%	11.3%
	2016 Estimated Graduate Degree	5.3%	6.4%	6.4%
BUSINESS	2016 Estimated Total Businesses	498	3,296	7,824
	2016 Estimated Total Employees	5,994	35,486	88,851
	2016 Estimated Employee Population per Business	12.0	10.8	11.4
	2016 Estimated Residential Population per Business	16.1	25.3	27.7

This report was produced using data from private and government sources deemed to be reliable. The information herein is provided without representation or warranty.