

FOR LEASE > OFFICE SPACE

6800 Hilltop Road

SHAWNEE, KANSAS



PROPERTY FEATURES

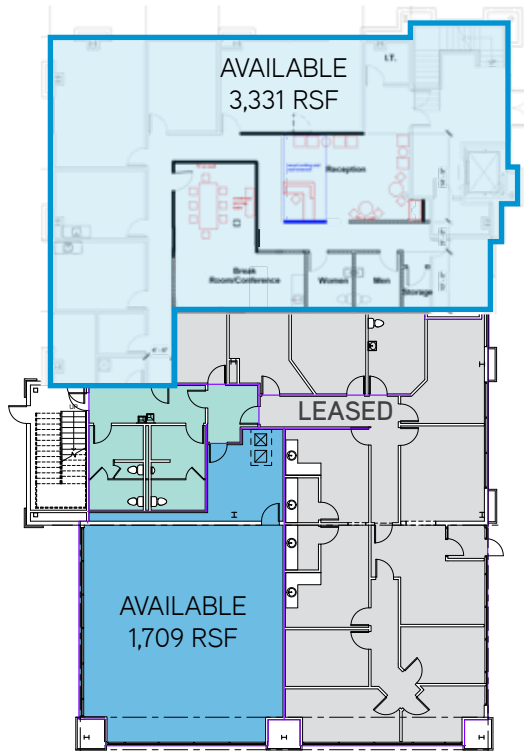
- > First floor availability: 5,040 RSF
 - > Suite 101: 3,331 RSF
 - > Suite 103: 1,709 RSF
- > Perfect for office/medical/professional services
- > Owner will finish interior build-out
- > Ample free parking
- > Prime Shawnee location with convenient access to Shawnee Mission Parkway & K-7
- > Abundant restaurant and retail amenities nearby
- > Lease rate: \$21.00 PSF (net of utilities & janitorial)

TOM HAVERTY
+1 816 556 1105
KANSAS CITY, MO
tom.haverty@colliers.com

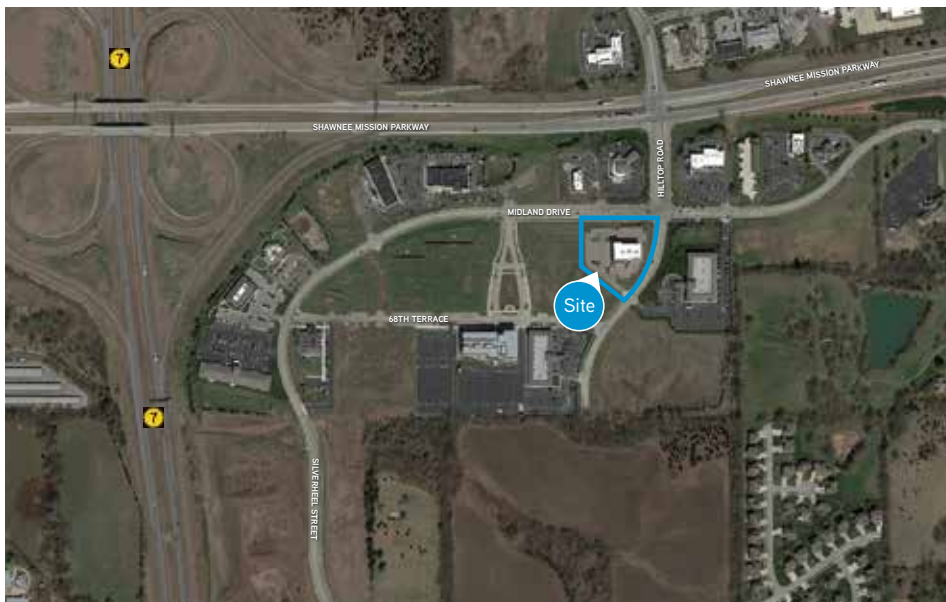
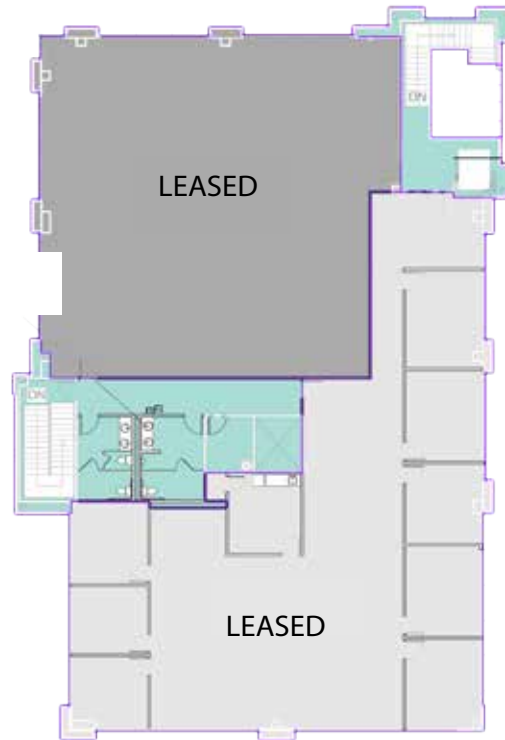
COLLIERS INTERNATIONAL
4520 Main Street, Suite 1000
Kansas City, MO 64111
www.colliers.com

6800 Hilltop Road > Shawnee, Kansas

FIRST FLOOR > 5,040 RSF AVAILABLE



SECOND FLOOR > FULLY LEASED



TOM HAVERTY
+1 816 556 1105
KANSAS CITY, MO
tom.haverty@colliers.com

COLLIERS INTERNATIONAL
4520 Main Street, Suite 1000
Kansas City, MO 64111
www.colliers.com

