

FOR SALE OR LEASE > ±2,024 SF OFFICE CONDO

41 Park of Commerce Way - Unit 303



SAVANNAH, GA 31406



Plantation Corporate Center

Plantation Corporate Center is located along the Chatham Parkway corridor. With easy access to I-16 and Veteran's Parkway, this location is convenient and ideal for a professional office user.

Building Highlights

- > Single story office building
- > Built in 2005
- > Zoning: PUD-BR
- > Abundant parking
- > Monument signage
- > Six offices, conference room, break room, waiting and reception area

Pricing

LEASE RATE > \$18.50/SF, Gross
(Rate is inclusive of Taxes, Insurance and CAM)

ASKING PRICE > \$355,000

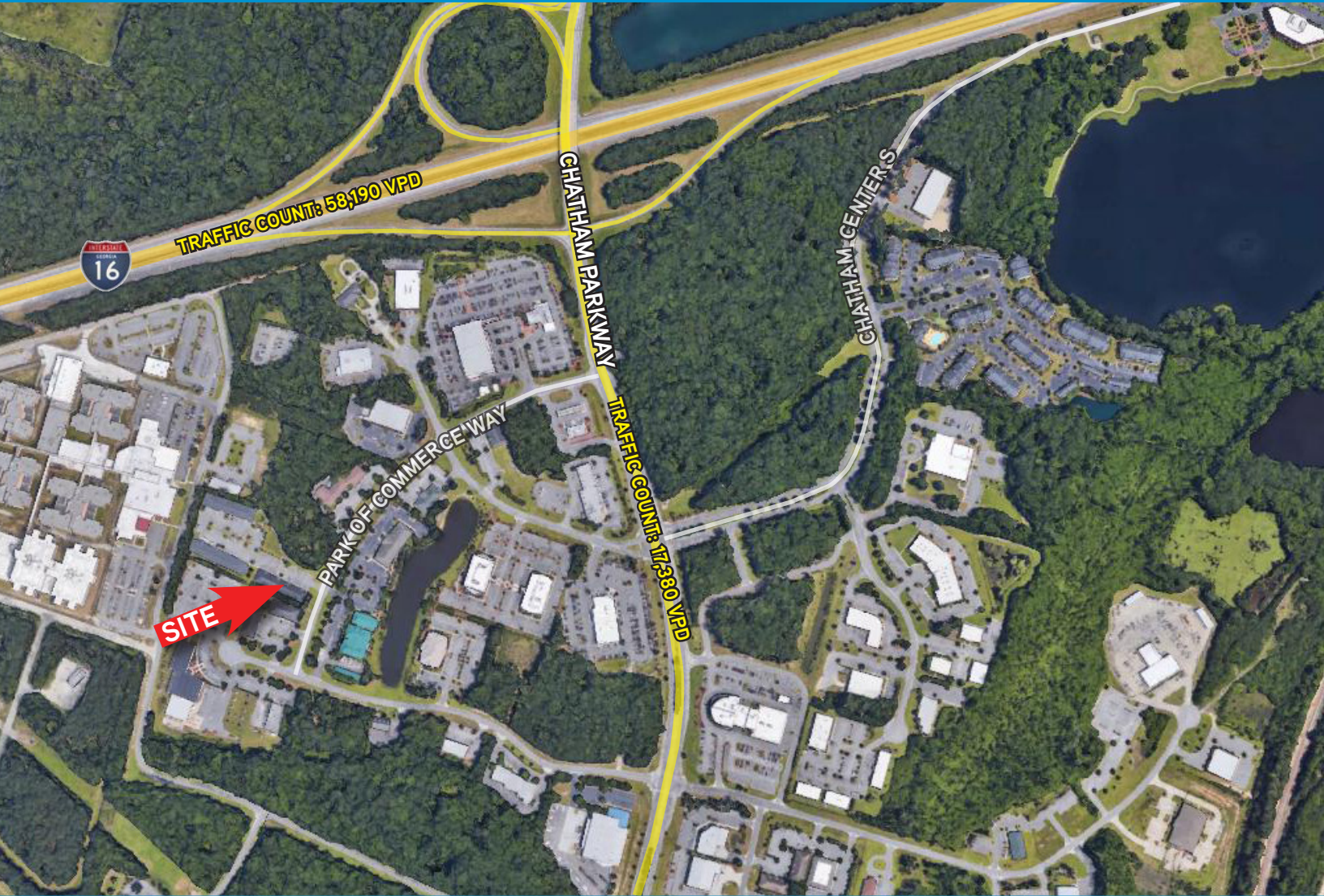
ASHLEY W. SMITH, SIOR, CCIM
Colliers International | Savannah
912 662 8011
ashley.smith@colliers.com

COLLIERS INTERNATIONAL
545 E. York Street
Savannah, GA 31401
www.colliers.com

FOR SALE OR LEASE > ±2,024 SF OFFICE CONDO

41 Park of Commerce Way - Unit 303

SAVANNAH, GA 31406



Demographics (ESRI 2019)

	1 MILE	3 MILES	5 MILES
POPULATION >	±3,143	±27,606	±97,617
HOUSEHOLDS >	±790	±9,901	±37,072
AVERAGE HH INCOME >	\$67,625	\$51,947	\$57,071
TOTAL NO. OF BUSINESSES >	±267	±1,637	±6,149
TOTAL NO. OF EMPLOYEES >	±5,809	±24,690	±82,095

ASHLEY W. SMITH, SIOR, CCIM
Colliers International | Savannah
912 662 8011
ashley.smith@colliers.com

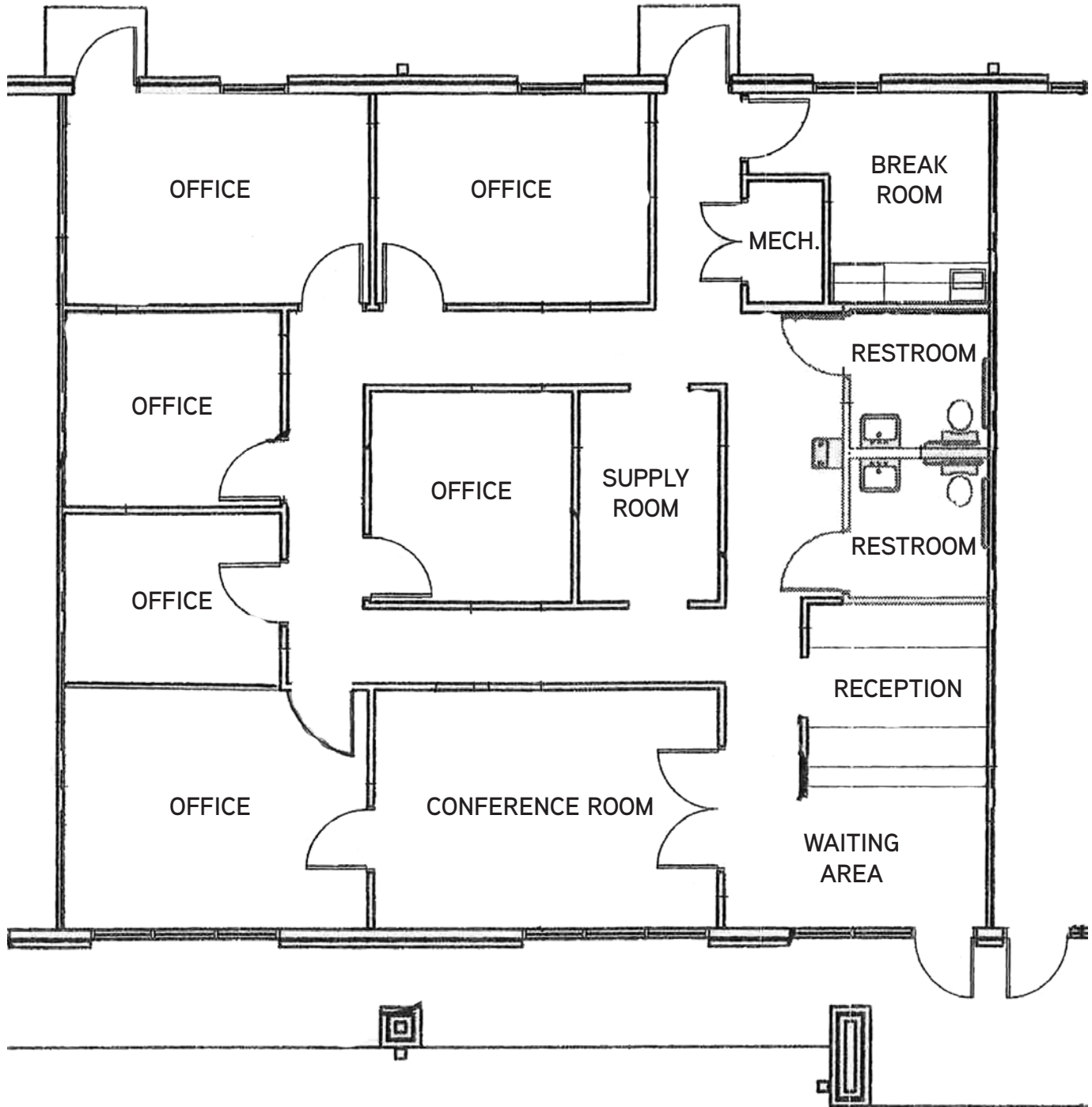
The information contained herein has been obtained from sources deemed reliable. While every reasonable effort has been made to ensure its accuracy, we cannot guarantee it. No responsibility is assumed for any inaccuracies. Readers are encouraged to consult their professional advisers prior to acting on any of the material contained in this report.

FOR SALE OR LEASE > ±2,024 SF OFFICE CONDO

41 Park of Commerce Way - Unit 303



SAVANNAH, GA 31406



ASHLEY W. SMITH, SIOR, CCIM
Colliers International | Savannah
912 662 8011
ashley.smith@colliers.com

The information contained herein has been obtained from sources deemed reliable. While every reasonable effort has been made to ensure its accuracy, we cannot guarantee it. No responsibility is assumed for any inaccuracies. Readers are encouraged to consult their professional advisers prior to acting on any of the material contained in this report.