

FOR LEASE

# Portland Center Plaza

2075 SW 1ST AVENUE PORTLAND, OR 97201



## Building Highlights

- › Close-in South CBD served by multiple mass transit lines
- › Plug 'n' Play office opportunities
- › Excellent natural light with east-facing views down to the South Waterfront
- › 2/1,000 Parking
- › Free customer and visitor parking

## AVAILABILITIES

› <b>Ground Floor (Retail/Office)</b>	<b>2,000 RSF</b>	<b>\$20/SF/MG</b>
› <b>Suite 2M</b>	<b>1,320 RSF</b>	<b>\$20/SF/MG</b>
› <b>Suite 2G</b>	<b>1,650 RSF</b>	<b>\$20/SF/MG</b>

CARTER BEYL  
503 542 5892  
PORTLAND, OR  
carter.beyl@colliers.com

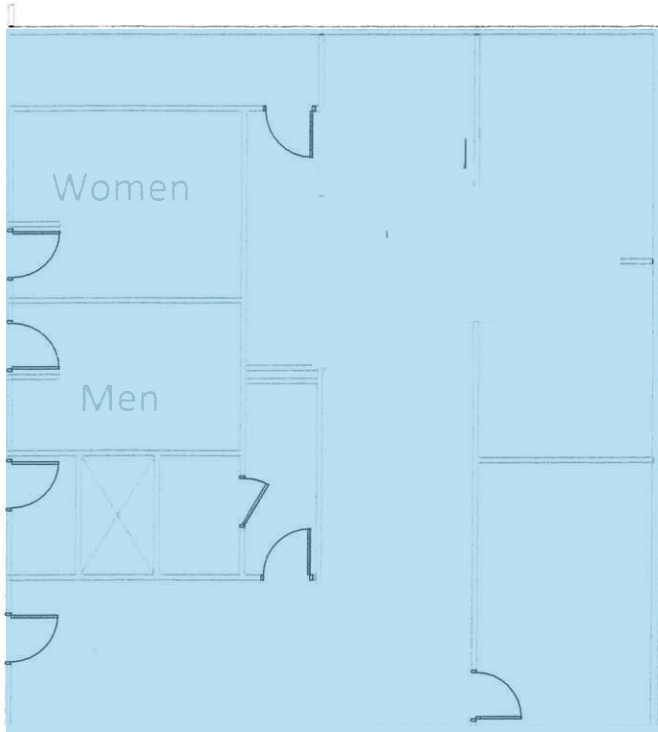
ROBERT GREENFIELD  
503 542 5894  
PORTLAND, OR  
robert.greenfield@colliers.com

COLLIERS INTERNATIONAL  
851 SW Sixth Avenue, Suite 1200  
Portland, Oregon 97204  
www.colliers.com

# Floor Plans

2075 SW 1ST AVENUE PORTLAND, OR 97201

## SUITE 2G 1,650 RSF



## SUITE 2M 1,320 RSF

