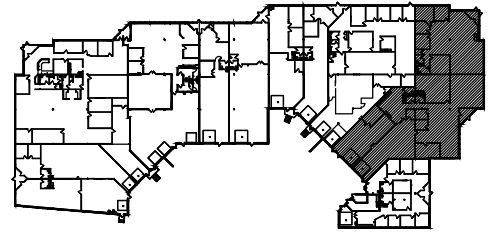
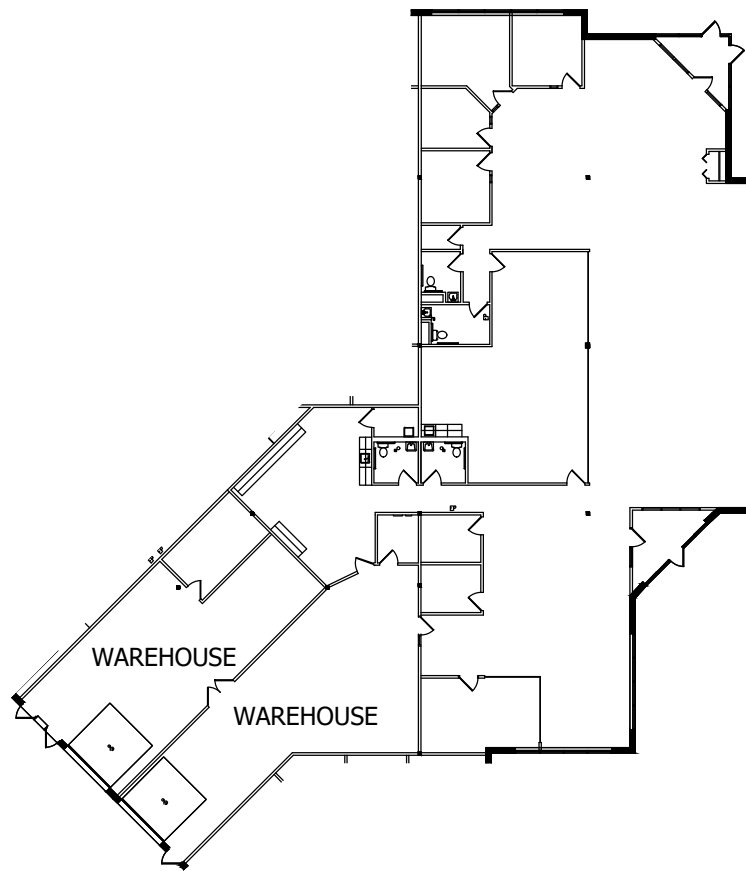


# SQUARE FOOTAGE SUMMARY

OFFICE	6,703 SF
WAREHOUSE	2,300 SF
BLDG M/E	64 SF
TOTAL	<u>9,067 RSF</u>



## KEY PLAN



## 1 FLOOR PLAN - SUITES 206 & 210

24.0001759.000 / TTL

07/10/24

SCALE: 1/32"=1'-0"



LEASED & MANAGED BY:



## PARKERS LAKE POINTE II

14505 21ST AVENUE NORTH  
PLYMOUTH, MINNESOTA

## NELSON

901 Marquette Avenue South - Suite 2850  
Minneapolis, MN 55402  
Contact: Tiffany Townsend  
Phone: (612) 370-1594