

SUITE 222  
VENPRO

SUITE 221  
RUDIE CONSULTINGH, LLC

SUITE 216  
BENCO DENTAL

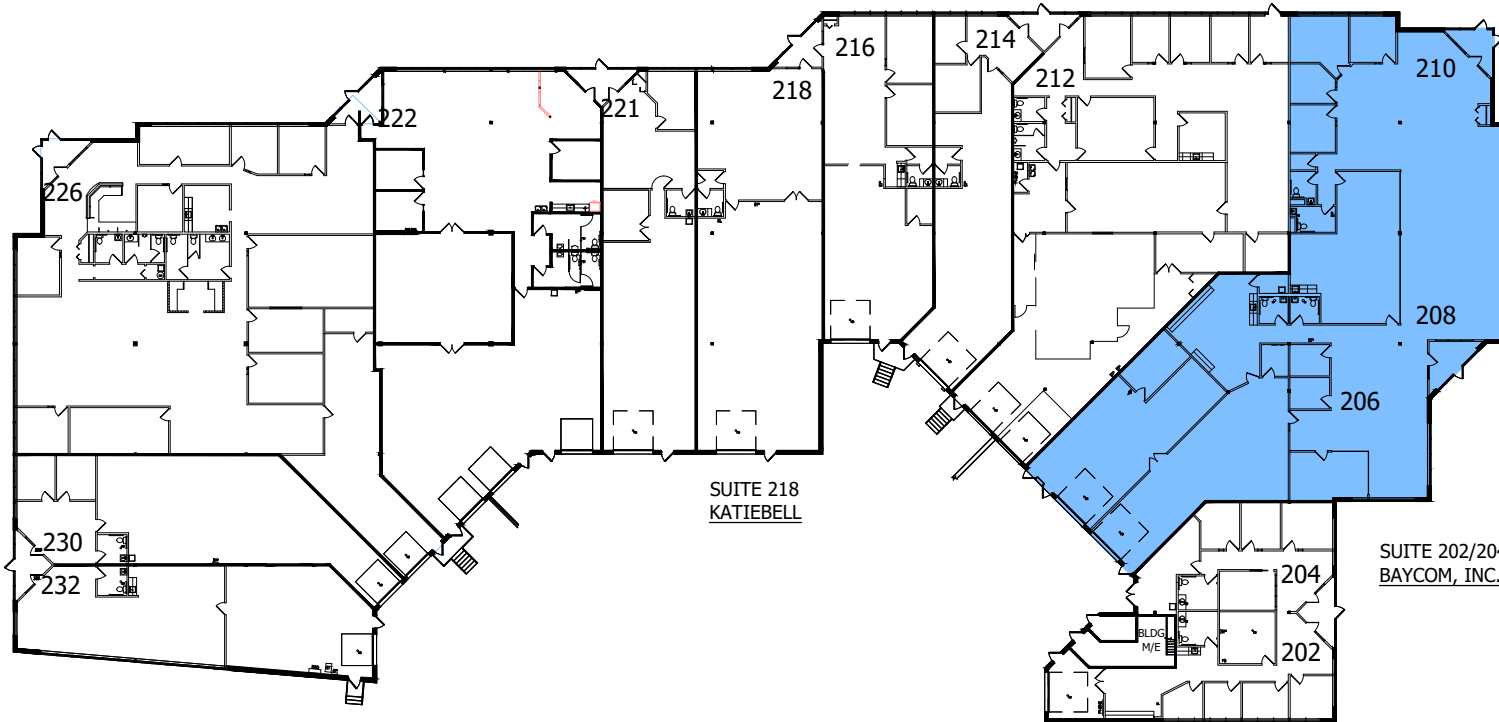
SUITE 214  
BUGG PRODUCTS

SUITE 212  
CATH CONCEPTS

SUITE 226  
APPLE ROOFING

SUITE 230  
BUGG PRODUCTS

SUITE 232  
BUGG PRODUCTS



SUITE 210	
VACANT	
OFFICE	2,919 S.F.
TECH	0 S.F.
WAREHOUSE	0 S.F.
BLDG M/E	21 S.F.
TOTAL	2,940 S.F.
EXP:	

SUITE 206/208	
VACANT	
OFFICE	3,784 S.F.
TECH	0 S.F.
WAREHOUSE	2,300 S.F.
BLDG M/E	43 S.F.
TOTAL	6,127 S.F.
EXP:	

SUITE 202/204  
BAYCOM, INC.

SUITE 218  
KATIEBELL

1  
1

# BUILDING KEY PLAN

24.0001759.000/ TTL

01/27/2026

NOT TO SCALE



LEASED & MANAGED BY:



## PARKERS LAKE POINTE II

14505 21ST AVENUE NORTH  
PLYMOUTH, MINNESOTA

## NELSON

901 Marquette Avenue South - Suite 2850  
Minneapolis, MN 55402  
Contact: Tiffany Townsend  
Phone: (612) 370-1594