

FOR SALE > VACANT LAND

+ / - .46 ACRES

EAST MAPLE ROAD & COMBERMERE STREET | TROY, MICHIGAN



GREAT CORNER LOT AT LIGHTED INTERSECTION

> PROPERTY HIGHLIGHTS

- +/- .46 Acres of Vacant Land For Sale
- IB Zoning Allows For Multiple Uses That Include Retail, Office and Industrial
- Traffic Count of 30,220 on East Maple Road
- One Mile Daytime Population of 16,305

> DEMOGRAPHICS

	1 MILE	3 MILE	5 MILE
POPULATION	10,471	95,869	300,798
AVG. INCOME	\$80,698	\$90,466	\$101,531
HOUSEHOLDS	4,542	43,025	127,448

COLLIERS INTERNATIONAL

2 Corporate Drive | Suite 300

Southfield, Michigan 48076

For More Information Call:

LOU FRANGO

PHONE 248 540 1000 EXT 1678

EMAIL lou.frango@colliers.com



CLINT CONFER

PHONE 248 540 1000 EXT 1804

EMAIL clint.confer@colliers.com



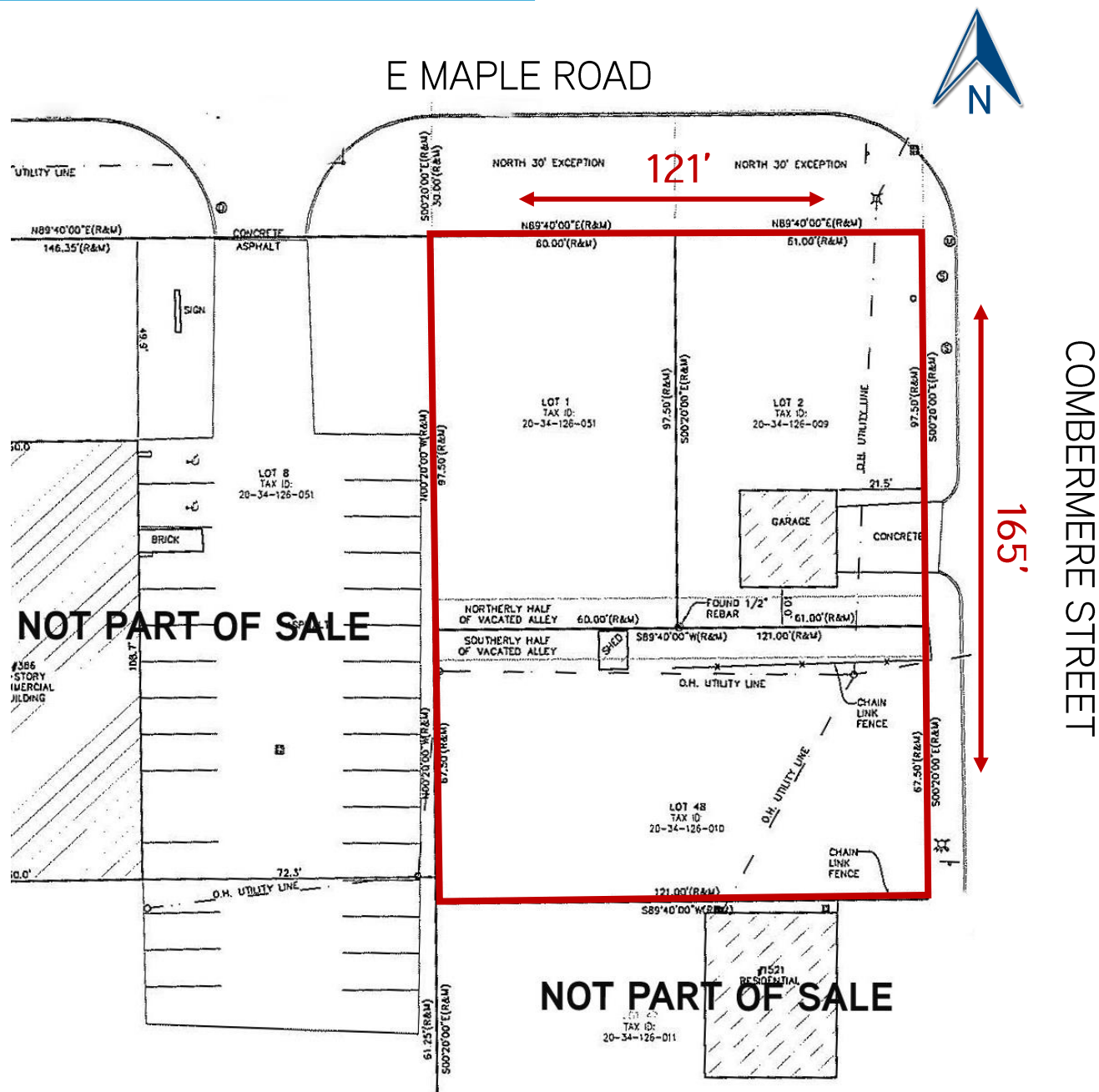
colliers.com/detroit



+ / - .46 ACRES



> SITE PLAN



EMAIL clint.confer@colliers.com

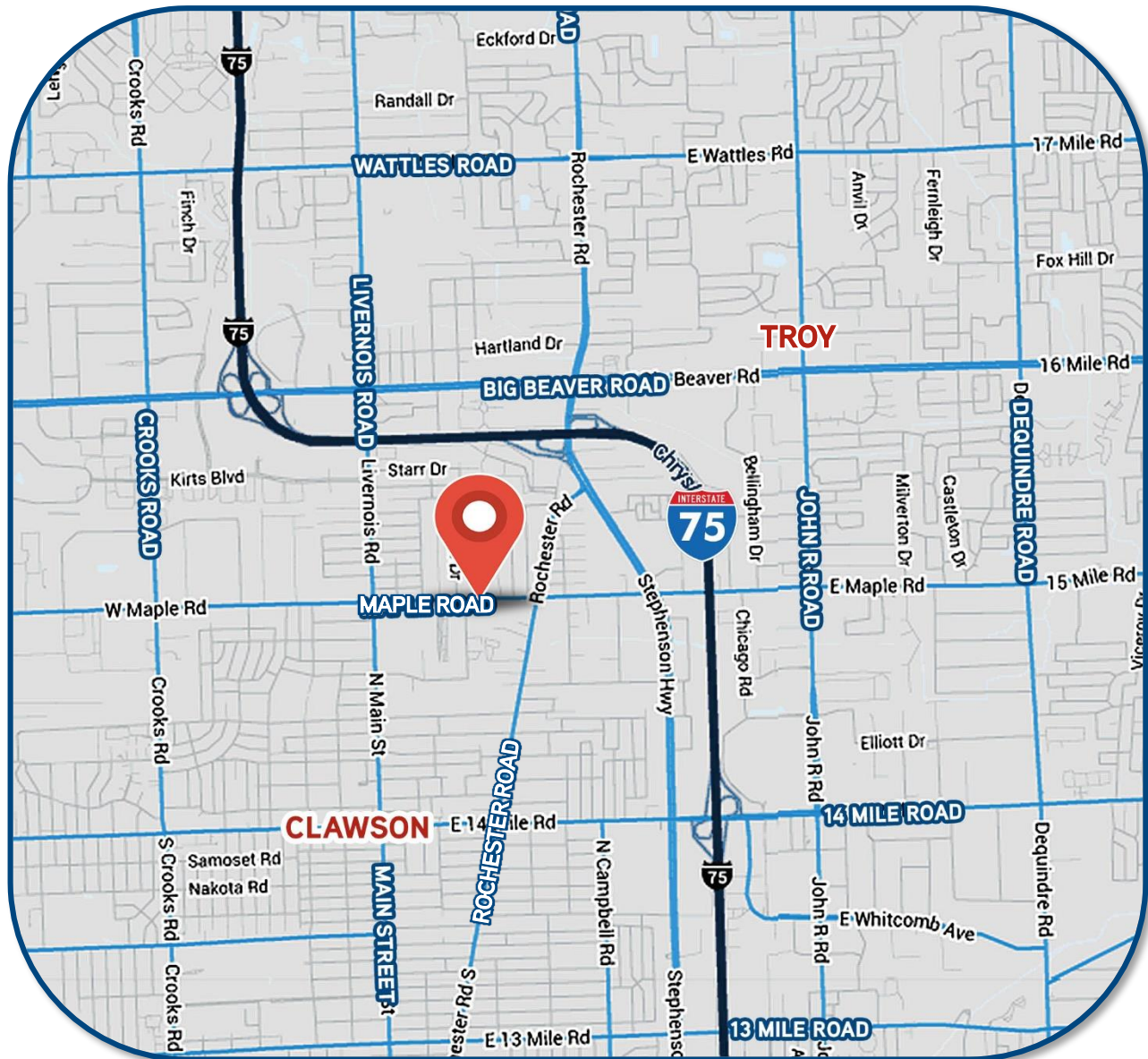
FOR SALE > VACANT LAND

+ / - .46 ACRES

EAST MAPLE ROAD & COMBERMERE STREET | TROY, MICHIGAN



> LOCATION MAP



LOU FRANGO

PHONE 248 540 1000 EXT 1678

EMAIL lou.frango@colliers.com



CLINT CONFER

PHONE 248 540 1000 EXT 1804

EMAIL clint.confer@colliers.com

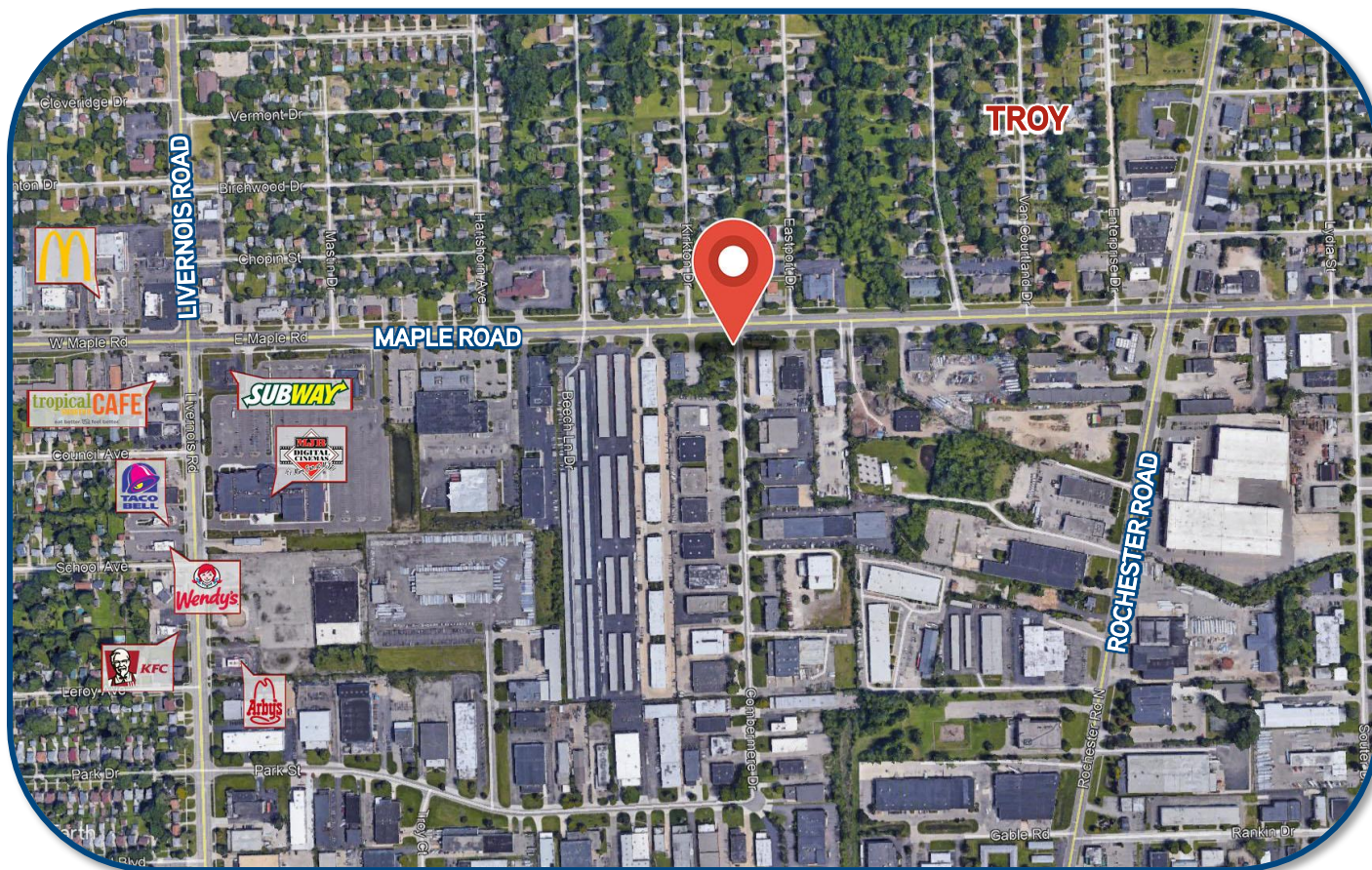
FOR SALE > VACANT LAND

+ / - .46 ACRES

EAST MAPLE ROAD & COMBERMERE STREET | TROY, MICHIGAN



> MERCHANT AERIAL



LOU FRANGO
PHONE 248 540 1000 EXT 1678
EMAIL lou.frango@colliers.com



CLINT CONFER
PHONE 248 540 1000 EXT 1804
EMAIL clint.confer@colliers.com

SUMMARY PROFILE

2000-2010 Census, 2017 Estimates with 2022 Projections

Calculated using Weighted Block Centroid from Block Groups



Lat/Lon: 42.5485/-83.1388

RS1

E Maple Rd & Combermere St

Troy, MI 48083

1 mi radius

3 mi radius

5 mi radius

POPULATION	2017 Estimated Population	10,471	95,869	300,798
	2022 Projected Population	10,791	97,830	306,684
	2010 Census Population	9,407	90,366	287,309
	2000 Census Population	10,171	91,211	291,587
	Projected Annual Growth 2017 to 2022	0.6%	0.4%	0.4%
	Historical Annual Growth 2000 to 2017	0.2%	0.3%	0.2%
	2017 Median Age	36.2	39.1	40.2
HOUSEHOLDS	2017 Estimated Households	4,542	43,025	127,448
	2022 Projected Households	4,741	44,537	131,776
	2010 Census Households	4,045	39,611	119,173
	2000 Census Households	4,405	40,038	120,326
	Projected Annual Growth 2017 to 2022	0.9%	0.7%	0.7%
	Historical Annual Growth 2000 to 2017	0.2%	0.4%	0.3%
RACE AND ETHNICITY	2017 Estimated White	71.9%	74.6%	79.0%
	2017 Estimated Black or African American	7.3%	6.0%	7.0%
	2017 Estimated Asian or Pacific Islander	16.1%	16.1%	10.9%
	2017 Estimated American Indian or Native Alaskan	0.4%	0.3%	0.2%
	2017 Estimated Other Races	4.4%	3.1%	2.9%
	2017 Estimated Hispanic	4.6%	3.0%	2.6%
INCOME	2017 Estimated Average Household Income	\$80,698	\$90,466	\$101,531
	2017 Estimated Median Household Income	\$64,843	\$73,805	\$80,114
	2017 Estimated Per Capita Income	\$35,158	\$40,675	\$43,123
EDUCATION (AGE 25+)	2017 Estimated Elementary (Grade Level 0 to 8)	4.1%	3.6%	3.4%
	2017 Estimated Some High School (Grade Level 9 to 11)	4.9%	3.6%	4.2%
	2017 Estimated High School Graduate	24.5%	19.1%	19.1%
	2017 Estimated Some College	19.6%	17.5%	17.9%
	2017 Estimated Associates Degree Only	6.4%	7.6%	7.6%
	2017 Estimated Bachelors Degree Only	21.7%	27.7%	27.2%
	2017 Estimated Graduate Degree	18.7%	20.9%	20.6%
BUSINESS	2017 Estimated Total Businesses	1,097	7,752	17,742
	2017 Estimated Total Employees	16,305	102,297	222,189
	2017 Estimated Employee Population per Business	14.9	13.2	12.5
	2017 Estimated Residential Population per Business	9.5	12.4	17.0

This report was produced using data from private and government sources deemed to be reliable. The information herein is provided without representation or warranty.