

For Sublease > ±19,732 - ±27,228 Square Feet

# 1315 Airport Boulevard, Suite B

NAPA COUNTY, CALIFORNIA



## Property Features

- > Prominent location on the corner of Airport Blvd. & Devlin Road
- > Newly constructed Class "A" warehouse with upgraded architectural features
- > ±19,732 - ±27,228 square feet
- > ±28' clear height
- > ESFR Fire Sprinkler
- > ±32' x ±50' column spacing
- > Two (2) dock high doors
- > Two (2) grade level doors
- > 1.3 / 1,000 SF parking
- > Available May 1, 2018



For more information, please contact:

**BILL KAMPTON**

707.863.8377

bill.kampton@colliers.com

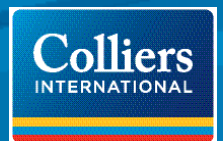
Lic. 00960310

**STEVE CROCKER**

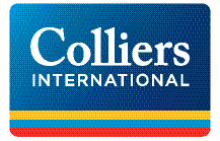
707.863.8361

steve.crocker@colliers.com

Lic. 01476069

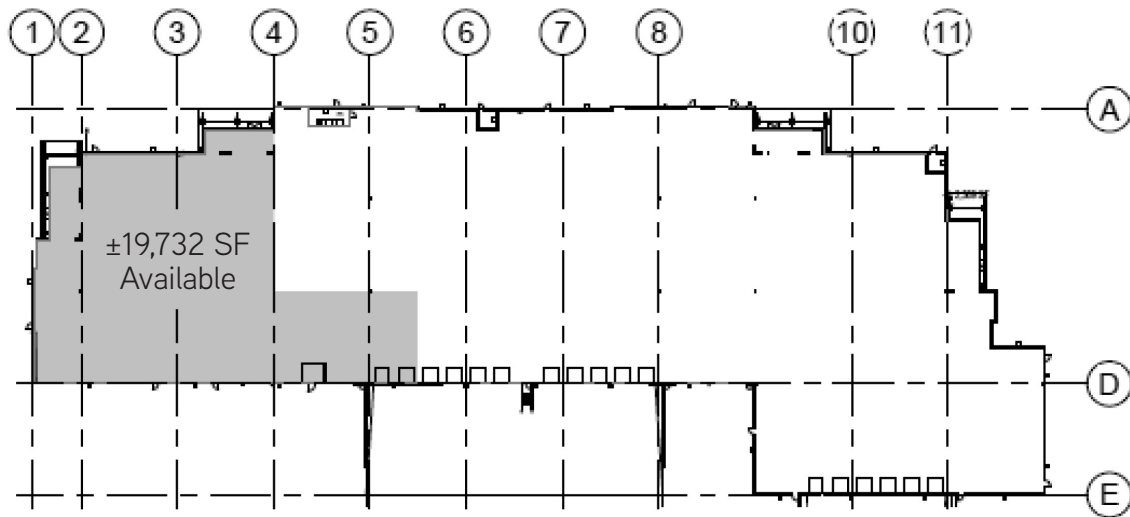


For Sublease > ±19,732 - ±27,228 Square Feet



# 1315 Airport Boulevard, Suite B

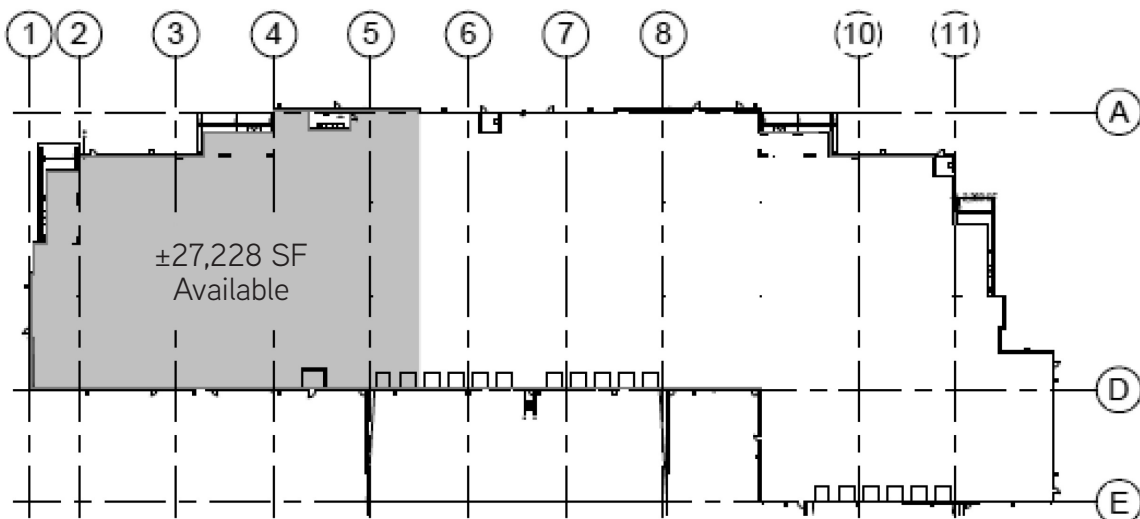
NAPA COUNTY, CALIFORNIA



AREA PLAN - OPTION 1

1/8" = 1'-0"

1



AREA PLAN - OPTION 2

1/8" = 1'-0"

2

For more information, please contact:

**BILL KAMPTON**

707.863.8377

bill.kampton@colliers.com

Lic. 00960310

**STEVE CROCKER**

707.863.8361

steve.crocker@colliers.com

Lic. 01476069