

FOR SUBLEASE > OFFICE/ WAREHOUSE BUILDINGS

406 N Locust & 501 Vine, North Little Rock, AR

Colliers
INTERNATIONAL



Location

Located just off of I-30 near E Broadway Street in North Little Rock, AR

Site Size

- > 406 N. Locust:
 - Main building: approx. 21,212 SF
 - Warehouse: approx. 14,200 SF
 - Office: approx. 7,012 SF
 - Additional warehouse: approx. 5,600 SF
- > 501 Vine St:
 - Warehouse: approx. 4,160 SF
- > Total SF: 30,972
- > Total lot size: +/- 3.72 acres

Zoning

- > I-1 - Industrial

Sublease Rate

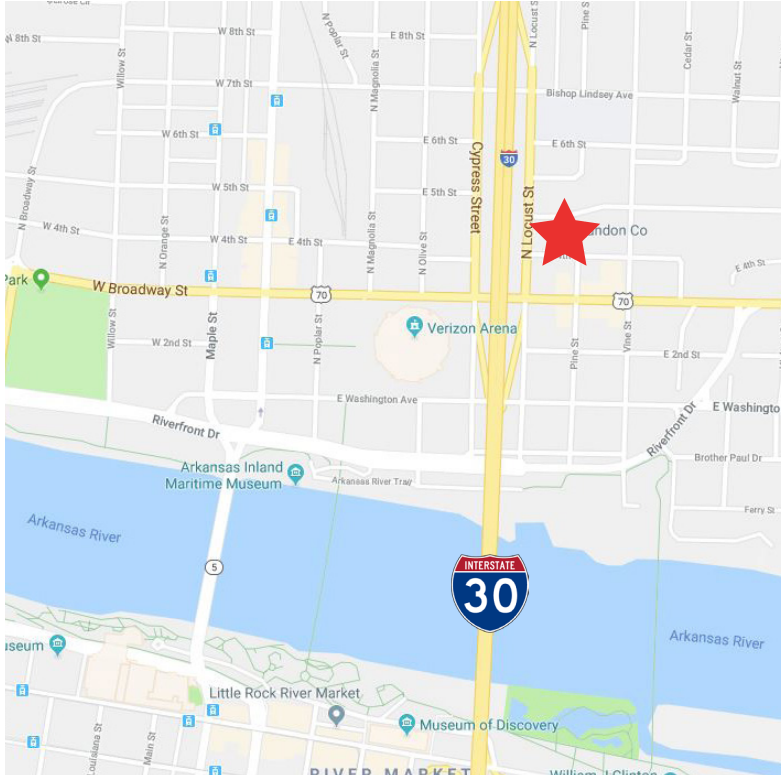
- > Negotiable

Building Features

- > Fenced in yard
- > Easy access to I-30
- > Visibility to I-30

FOR SUBLEASE > OFFICE/ WAREHOUSE BUILDINGS

406 N Locust & 501 Vine, North Little Rock, AR



Contact Us

CLARK IRWIN, CCIM
501 978 6588
clark.irwin@colliers.com

ISAAC SMITH, CCIM, SIOR
501 372 6161 | 736
isaac.smith@colliers.com

COLLIERS INTERNATIONAL
1 Allied Dr, Suite 1500
Little Rock, AR 72202
+1 501 372 6161
www.colliers.com/arkansas

CORE
VALUES

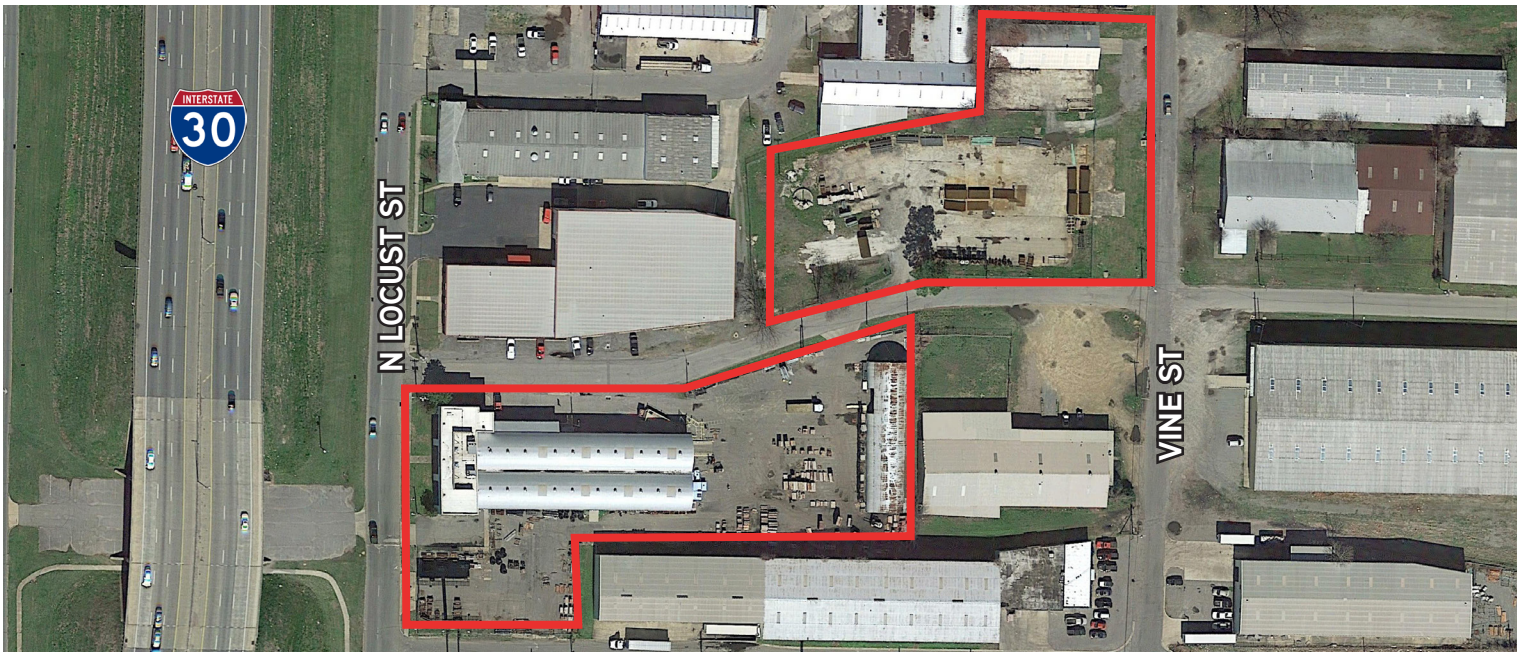
Client

Firm

Self

Fun

AERIAL



This document has been prepared by Colliers International for advertising and general information only. Colliers International makes no guarantees, representations or warranties of any kind, expressed or implied, regarding the information including, but not limited to, warranties of content, accuracy and reliability. Any interested party should undertake their own inquiries as to the accuracy of the information. Colliers International excludes unequivocally all inferred or implied terms, conditions and warranties arising out of this document and excludes all liability for loss and damages arising there from. This publication is the copyrighted property of Colliers International and/or its licensor(s). ©2016. All rights reserved.