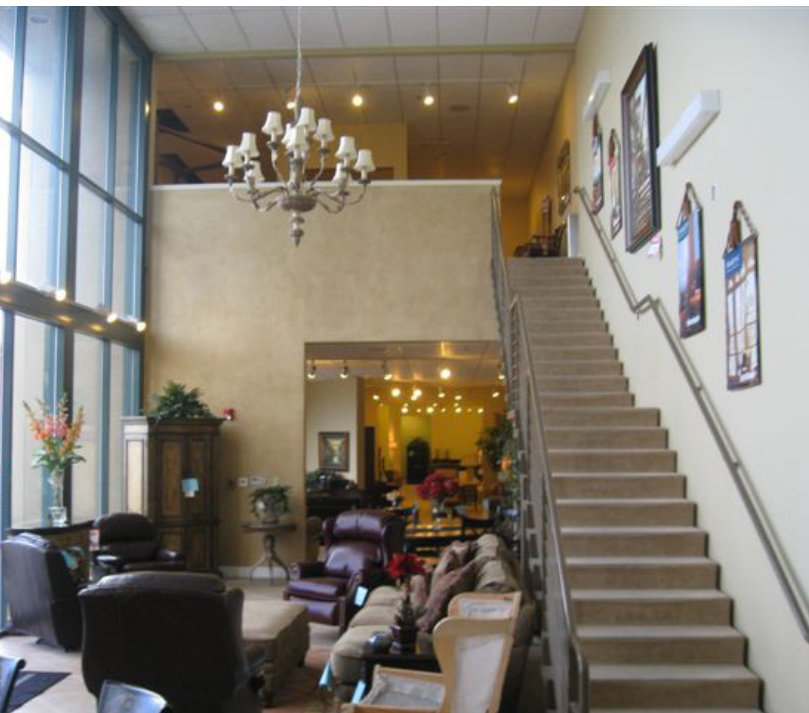


FOR LEASE > ±21,593 SF SHOWROOM/WAREHOUSE - DIVISIBLE

455 Lopes Road, Suites C & D

FAIRFIELD, CA



Property Description

- > Total Building: ±35,700 SF (main floor) and ±3,950 SF 2nd story mezzanine/showroom
- > Construction: Concrete tilt-up
- > Power: ±800 amps @ 120/208 volts, 3-phase, 4 wire
- > Minimum Clear Height: ±24' (in warehouse)
- > Column Spacing: ±54' minimum
- > Sprinklered
- > Parking: 2.5/1,000
- > Gross Acreage: ±1.84 (±380' wide x ±472' deep)

Amenities

- > High end office improvements in office/showroom area
- > Attractive lobby setting
- > Four (4) ADA bathrooms
- > Great access to I-80, Hwy. 680 & Hwy. 12
- > Unobstructed frontage on I-680
- > **COUNT:** AADT 62,000
- > **LEASE RATE:** Contact broker for pricing



Contact Us

CHRIS PETRINI
+1 707 863 8387
chris.petrini@colliers.com
CA License No. 01020505

BRET DEMARTINI, CCIM
+1 707 863 8397
bret.demartini@colliers.com
CA License No. 00856441

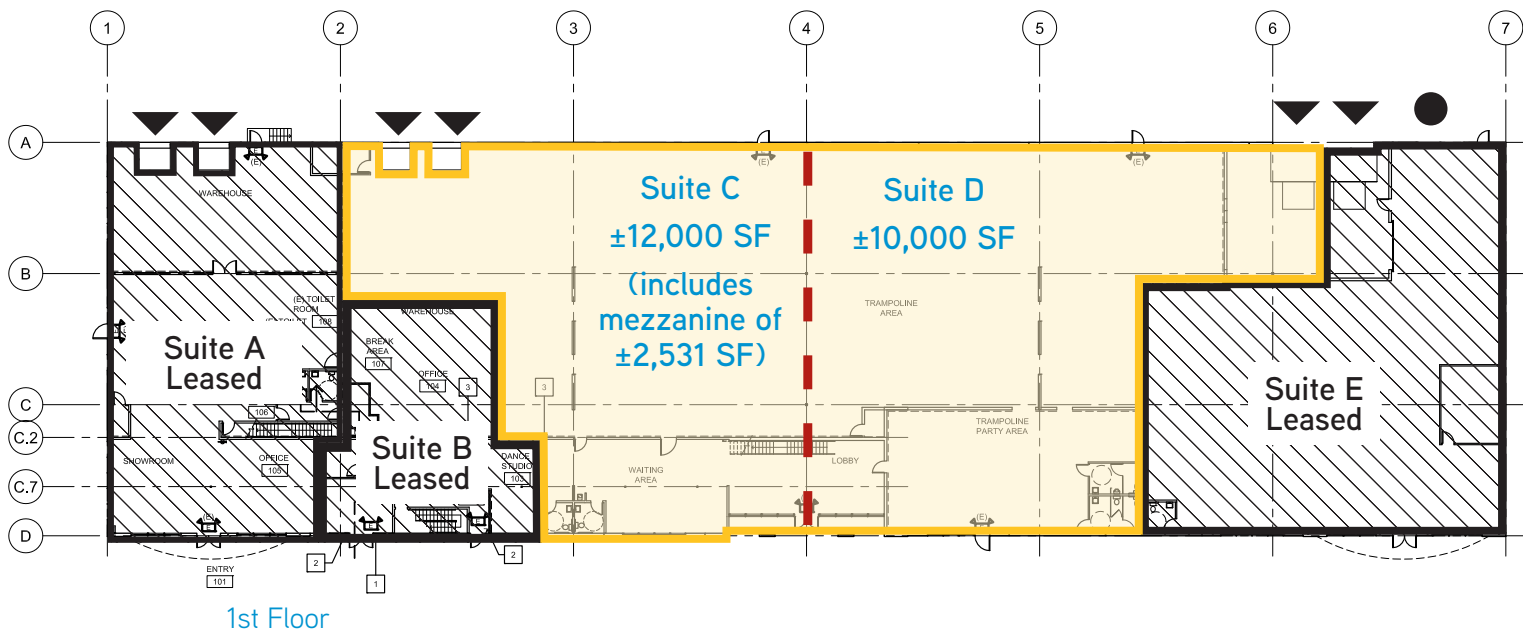
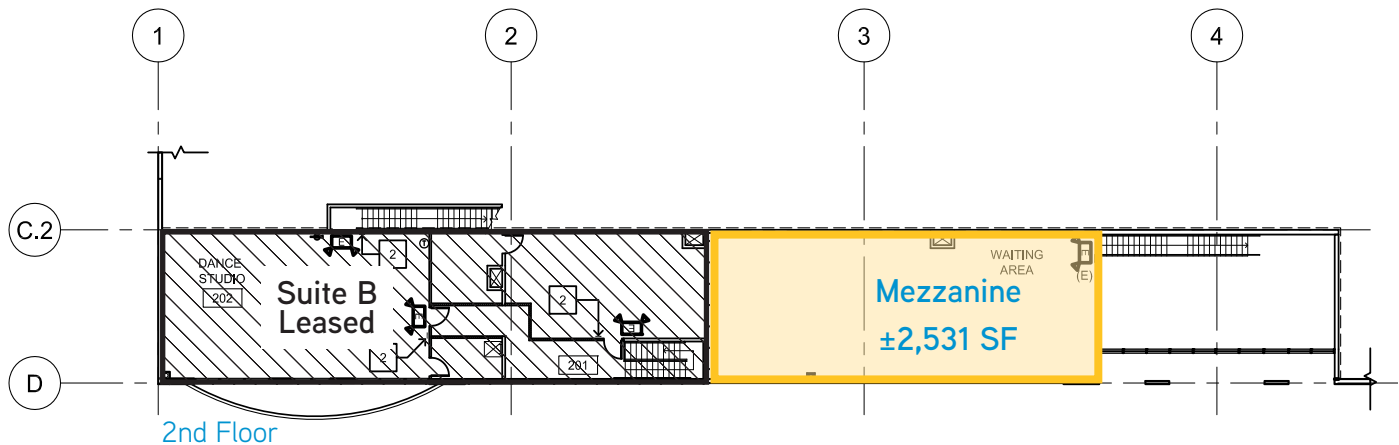
COLLIERS INTERNATIONAL
360 Campus Lane, Suite 101
Fairfield, CA 94534, USA
www.colliers.com

FOR LEASE > ±21,593 SF SHOWROOM/WAREHOUSE - DIVISIBLE



455 Lopes Road, Suites C & D

FAIRFIELD, CA



- ▼ Doc Door (10' x 10')
- Grade Level Door (12' x 14')



Copyright © 2018 Colliers International. Information herein has been obtained from sources deemed reliable, however its accuracy cannot be guaranteed. The user is required to conduct their own due diligence and verification.

Contact Us

CHRIS PETRINI
+1 707 863 8387
chris.petrini@colliers.com
CA License No. 01020505

BRET DEMARTINI, CCIM
+1 707 863 8397
bret.demartini@colliers.com
CA License No. 00856441

COLLIERS INTERNATIONAL
360 Campus Lane, Suite 101
Fairfield, CA 94534, USA
www.colliers.com