

AVAILABLE > RETAIL

Springville Smith's Marketplace

400 SOUTH 1200 EAST SPRINGVILLE, UTAH



Property Information

- > Smith's Marketplace Anchored Center
- > Pads, Mid-Box Space, Shop Space Available
- > Convenient Freeway Access
- > Nearby Retailers Include:



DEMOGRAPHICS	1 MILE	3 MILE	5 MILE
Population			
2017 Estimated	7,273	37,814	96,406
2022 Projected	8,612	42,213	105,409
Households			
2017 Estimated	2,080	10,650	26,782
2022 Projected	2,442	11,818	29,286
Income			
2017 Median HHI	\$60,661	\$61,301	\$58,795
2017 Average HHI	\$72,101	\$75,433	\$74,046
2017 Per Capita	\$20,824	\$21,879	\$20,981

Information provided by ESRI Business Analyst

Dan Moore
+1 801 947 8365
dan.moore@colliers.com

Tyson Moore
+1 801 453 6815
tyson.moore@colliers.com

Colliers International
6550 S Millrock Dr | Suite 200
Salt Lake City, UT 84121
P: +1 801 947 8300

AVAILABLE > RETAIL

Springville Smith's Marketplace

400 SOUTH 1200 EAST SPRINGVILLE, UTAH



Colliers International
6550 S Millrock Dr | Suite 200
Salt Lake City, UT 84121
P: +1 801 947 8300



Springville Smith's Marketplace

400 SOUTH 1200 EAST SPRINGVILLE, UTAH

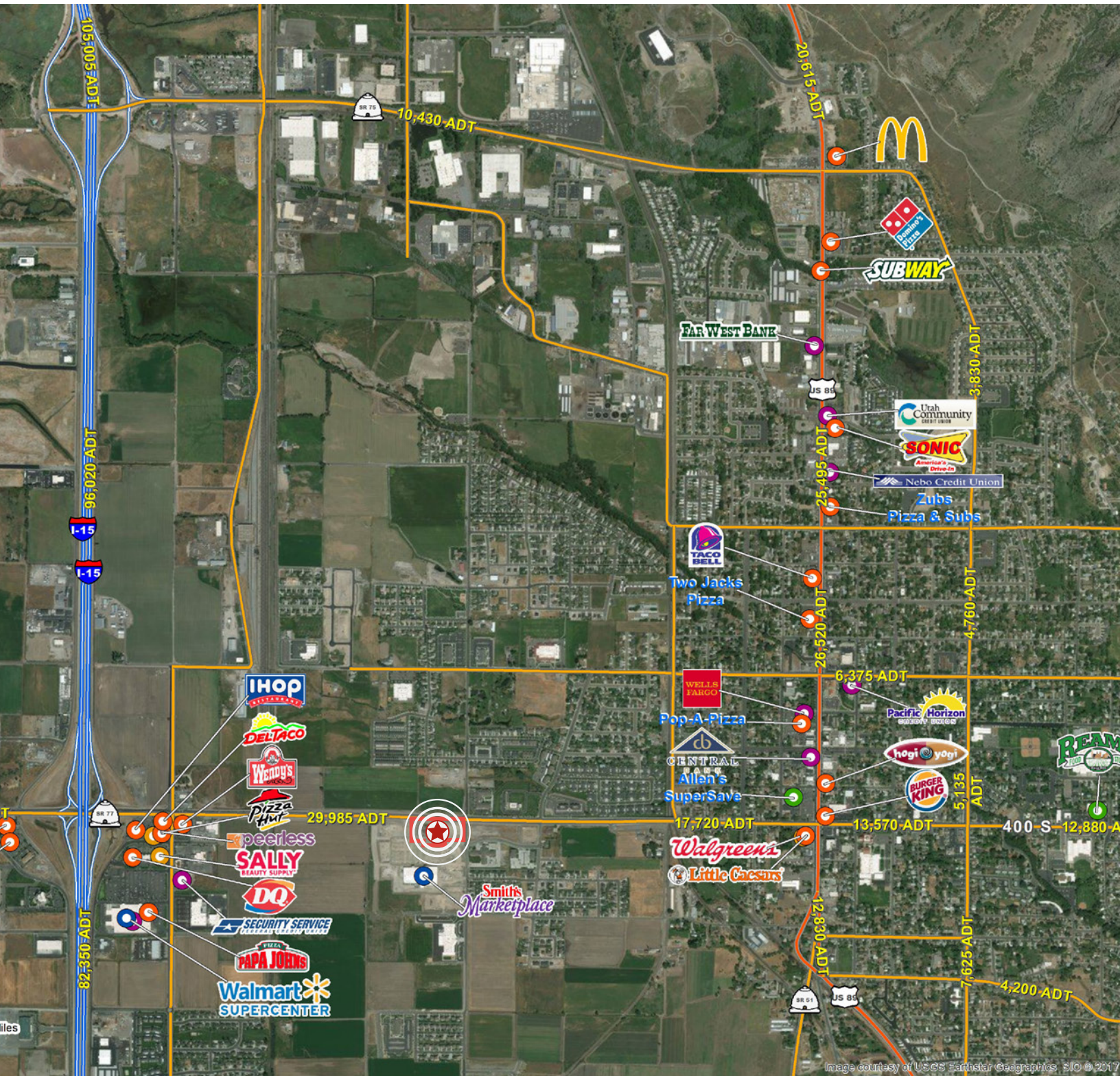


Image courtesy of USGS Earthstar Geographics. SIO © 2017

This document has been prepared by Colliers International for advertising and general information only. Colliers International makes no guarantees, representations or warranties of any kind, expressed or implied, regarding the information including, but not limited to, warranties of content, accuracy and reliability. Any interested party should undertake their own inquiries as to the accuracy of the information. Colliers International excludes unequivocally all inferred or implied terms, conditions and warranties arising out of this document and excludes all liability for loss and damages arising there from. This publication is the copyrighted property of Colliers International and/or its licensor(s). ©2017. All rights reserved.

Colliers International
6550 S Millrock Dr | Suite 200
Salt Lake City, UT 84121
P: +1 801 947 8300

