

# Industrial Land for Lease

Hanua Street

## FOR LEASE

**Campbell Industrial Park**  
**91-150 Hanua Street**  
**Kapolei, HI 96707**

**WILLIAM FROELICH (B) JD**  
**SIOR CCIM**

Industrial & Investment  
Services Division  
808 523 9711  
william.froelich@colliers.com

**RONALD C. WARD (S)**

Industrial & Investment  
Services Division  
808 523 9747  
ronald.ward@colliers.com



## Property Description

The property consists of 2 parcels located at 91-150 Hanua Street in James Campbell Industrial Park, Oahu's largest heavy industrial park. The Park is located in the City of Kapolei, the fastest growing region in the State. The 7.095 and 2.49 acre lots are graded and ready for immediate occupancy. The property is ideally situated on Hanua Street between Komohana and Kuhela Streets with easy access to all major freeways and highways.

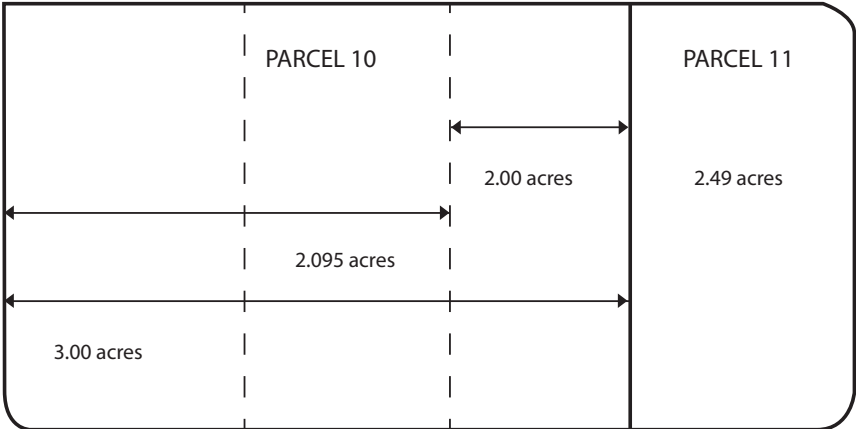


# FOR LEASE > Industrial Land

Address:	91-150 Hanua Street, Kapolei, HI 96707
Area:	Campbell Industrial Park
TMK:	(1) 9-1-26:10 & 11
Zoning:	I-2
Rent:	\$0.13 psf per month
CAM:	Real Property Tax (\$0.019 psf per month)
Term:	3+ Years

Parcel Size:	<ul style="list-style-type: none"><li>&gt; Parcel 10: 7.095 acres (demisable via CPR, into smaller 2+ acre parcels)</li><li>&gt; Parcel 11: 2.49 acres</li></ul>
Features & Benefits	<ul style="list-style-type: none"><li>&gt; Located in Campbell Industrial Park</li><li>&gt; One of the few vacant parcels available in the area</li><li>&gt; Easily accessible</li><li>&gt; Connections available to all major utilities</li><li>&gt; In close proximity to Kalaeloa Barbers Point Harbor</li></ul>

## SITE PLAN



## Contact Us

**WILLIAM FROELICH (B) JD SIOR CCIM**  
808 523 9711  
[william.froelich@colliers.com](mailto:william.froelich@colliers.com)

**RONALD C. WARD (S)**  
808 523 9747  
[ronald.ward@colliers.com](mailto:ronald.ward@colliers.com)

This document has been prepared by Colliers International for advertising and general information only. Colliers International makes no guarantees, representations or warranties of any kind, expressed or implied, regarding the information including, but not limited to, warranties of content, accuracy and reliability. Any interested party should undertake their own inquiries as to the accuracy of the information. Colliers International excludes unequivocally all inferred or implied terms, conditions and warranties arising out of this document and excludes all liability for loss and damages arising there from. This publication is the copyrighted property of Colliers International and/or its licensors(s). ©2017. All rights reserved.



**COLLIERS INTERNATIONAL**  
220 South King Street, Ste 1800  
Honolulu, HI 96813  
+1 808 524 2666  
[www.colliers.com/hawaii](http://www.colliers.com/hawaii)