

OFFICE SPACE FOR LEASE >

Voyager Building

500 Marshall Road | Shakopee, MN 55379

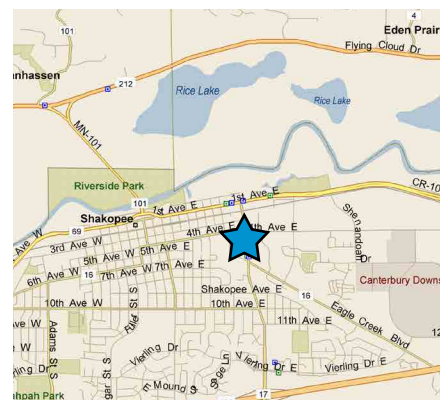


Accelerating success.



CLASS A SPACE AMENITIES

- > 27,758 square foot office/retail building
- > Ability to divide to a number of different square footages
- > Multi-tenant building
- > Common board room available to building tenants
- > Masonry construction
- > Built in 2004
- > Class 'A' office building
- > 130 parking stalls
- > PID#271780021
- > Great access to Hwys 101 & 169
- > Close proximity to shops & restaurants
- > 2004 Award of Merit and Award of Excellence Winner



CONTACT US

RYAN KRZMARZICK
952 897 7746
ryan.k@colliers.com

VOYAGER BUILDING > FOR LEASE

SITE INFORMATION:

- > Location 500 Marschall Road S | Shakopee, MN 55379
- > Building SF 27,758 SF
- > PID 271780021 SF
- > Year Built 2004
- > Building Class "A" Class

AVAILABILITY:

- > 1st Floor Office: 821 square feet
- > 2nd Floor Office: 1,023 square feet

NET RENTAL RATES:

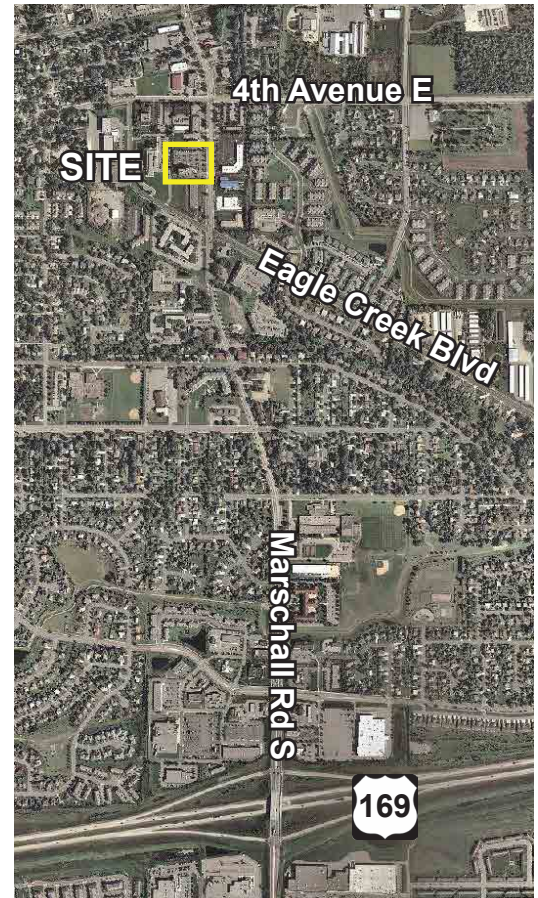
- > \$14.00 per square foot

2017 EST. OPERATING EXPENSES:

- > \$9.43 per square foot

COMMENTS:

- > Common board room available to building tenants
- > Easy access to Highways 101 & 169
- > Excellent Shakopee location!



CONTACT US

RYAN KRZMARZICK
952 897 7746
ryan.k@colliers.com



Accelerating success.

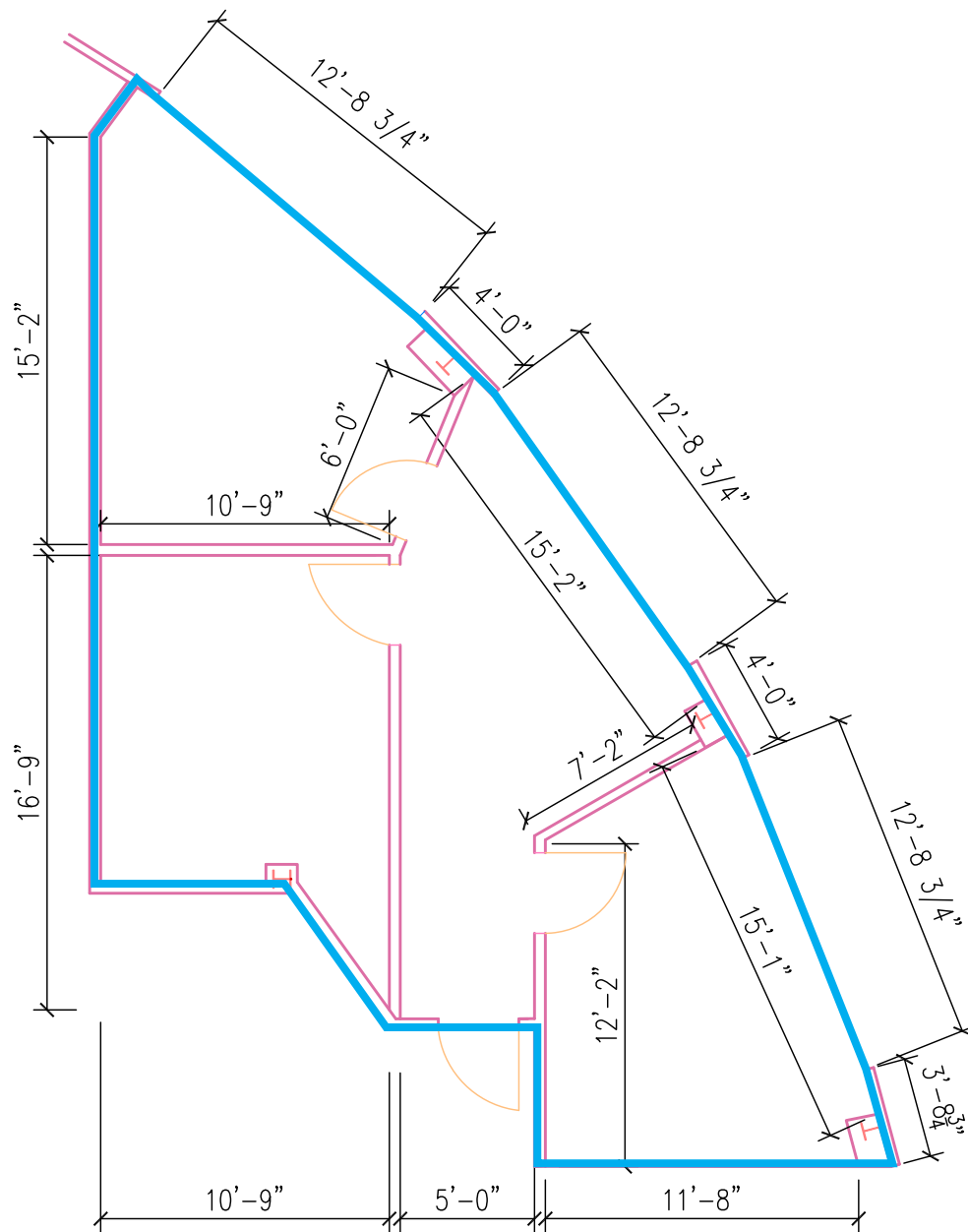
Colliers International | Minneapolis-St. Paul | 4350 Baker Road, Suite 400, Minnetonka, MN 55343 | colliers.com/msp

Voyager Building > Suite 140

500 MARSHALL ROAD S, SHAKOPEE, MN



AVAILABLE - 821 SF



RYAN KRZMARZICK
952 897 7746
ryan.k@colliers.com

AVAILABLE - 1,023 SF

