

**Coral Gables Medical  
Space**

4685 Ponce de Leon Blvd  
Coral Gables, FL 33146



## 4685 Ponce de Leon Blvd



# Property Overview

4685 Ponce de Leon Blvd



This two-story professional office building provides a turn-key opportunity in the Coral Gables/South Miami market. This well-maintained building features 75 feet of frontage on Ponce De Leon Boulevard, 8 covered parking spaces with 11 additional permitted across the street with the City of Coral Gables, wood laminate floors, balcony, large windows providing for natural light, an elevator, sliding-door and marble entrance and a recently-replaced roof.

## LOCATION

4685 Ponce de Leon Blvd  
Coral Gables, FL 33146

## FEATURES

- 12,792 rsf office building
- Spaces from 1,000-13,000 rsf, currently medical
- Building signage available
- Dedicated parking and abundant street parking
- Available July 2018





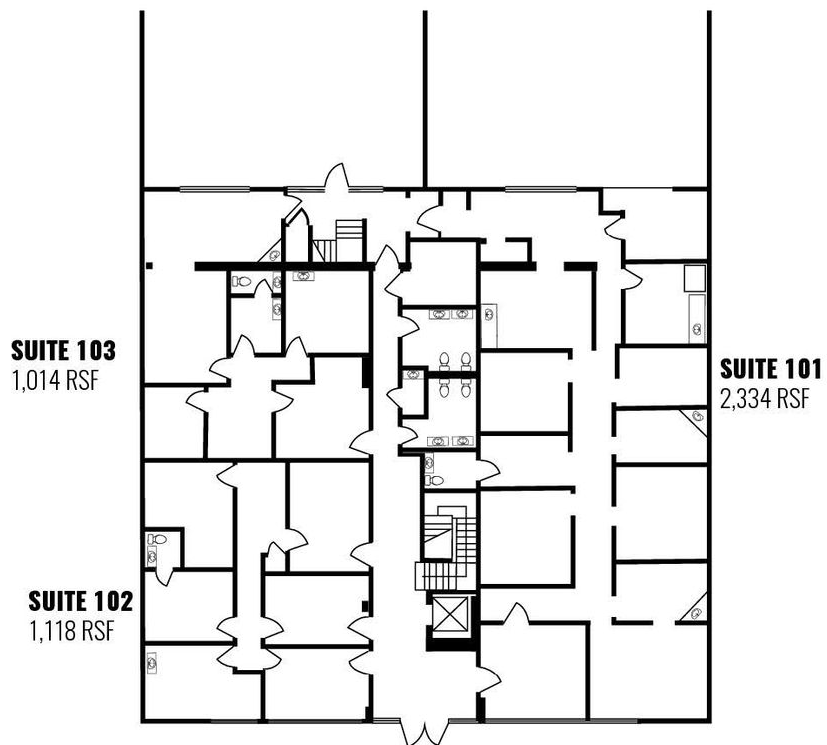
# Floor Plans

4685 Ponce de Leon Blvd

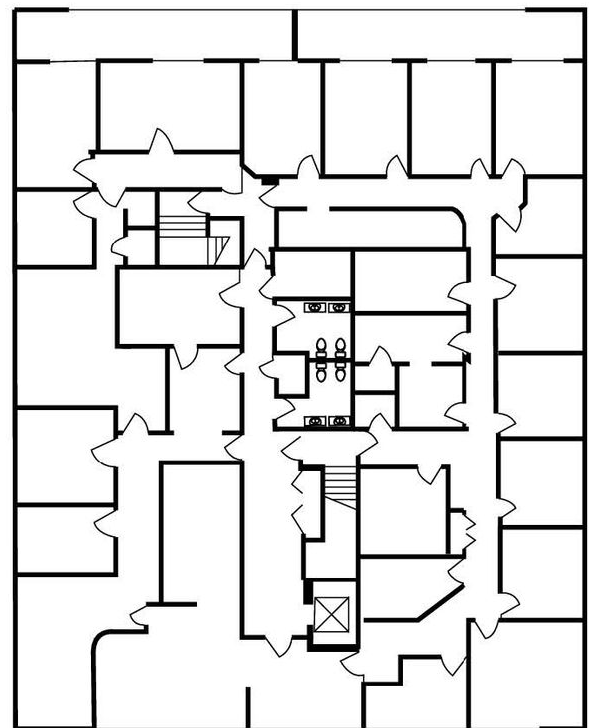


## AVAILABLE SPACES

Suite Suite 101	2,334 SF
Suite Suite 102	1,118 SF
Suite Suite 103	2,334 SF
Suite Suite 200	7,059 - 13,000 SF



## 2ND FLOOR 7,059 RSF



# Location Overview

4685 Ponce de Leon Blvd



City of Coral Gables, Located on the South Ponce Corridor between the Coral Gables CBD and South Miami/University of Miami Submarkets.



## CONTACT

Steven Hurwitz  
Executive Managing Director  
305.779.3175  
[steven.hurwitz@colliers.com](mailto:steven.hurwitz@colliers.com)

COLLIERS  
2121 Ponce de Leon Blvd.  
Suite 1250  
Coral Gables, FL 33134