

**SALE PRICE REDUCED TO \$500,000**



RETAIL FOR SALE OR LEASE

# PARKWAY PLAZA

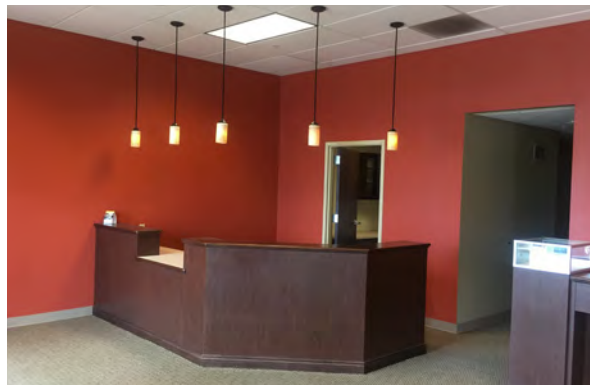
135TH STREET & ROE AVENUE, LEAWOOD, KS





## PROPERTY FEATURES

- Prime South Johnson County location with multiple access points to the property
- Fantastic visibility with signage at 135th Street and Roe Avenue
- Available immediately: 1,995 RSF endcap for sale or lease
- Perfect for retail/office/medical owner-user
- Generous parking with 5.44/1,000 spaces



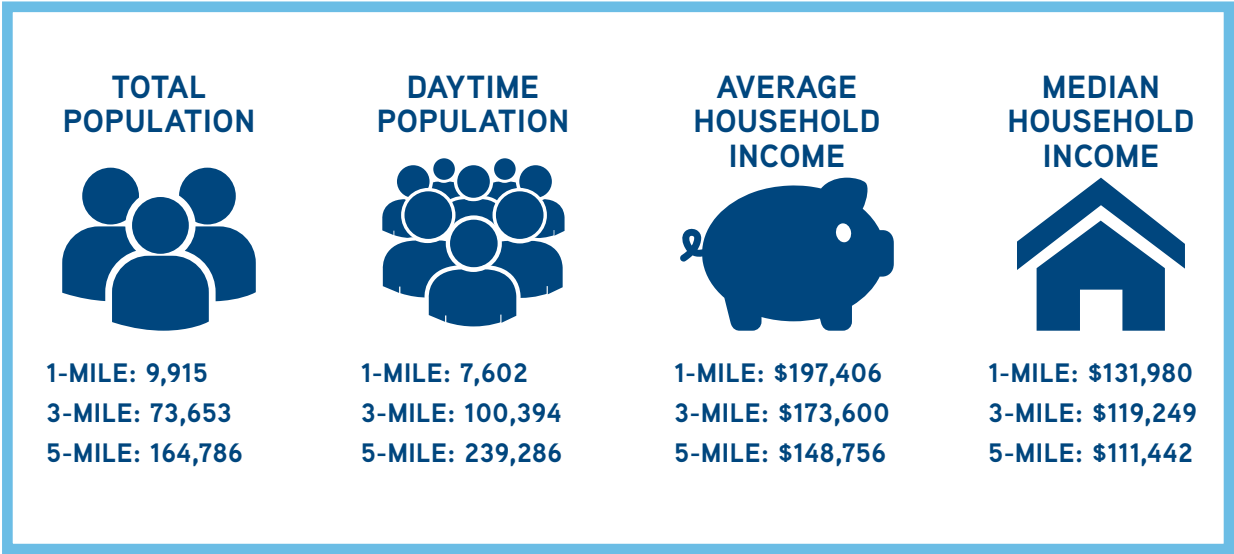


LOCATION AERIAL





# PROPERTY DEMOGRAPHICS



FOR RETAIL LEASING



**TRACY DAWN WILSON**

+1 816 556 1191  
kansas city ■ mo  
[tracy.wilson@colliers.com](mailto:tracy.wilson@colliers.com)



**COLLIERS INTERNATIONAL**  
[www.colliers.com](http://www.colliers.com)