

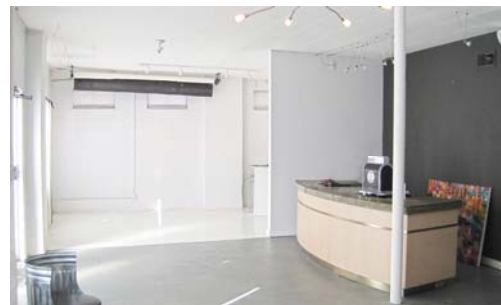
FOR LEASE > RETAIL/OFFICE SPACE

6570-6572 MAPLE STREET

OMAHA, NE 68104



Accelerating success.



## Building information

Type of Listing:	Retail/Office for Lease	Intersection:	NEC, 66 <sup>th</sup> & Maple St
Price:	\$9.00/SF	LoopNet #:	19307886
Operating Type:	NNN		
Est. Expenses:	\$1.50/SF (2018)		
Available:	Immediately	Heat & A/C:	Yes
Total SF Available:	1,800-5,400 SF	Ceiling Height:	9'
Total Building SF:	5,400 SF	Restrooms:	Three (3)
Year Built:	1952		

## Overview

Newly designed storefront with great signage in this west Benson location.

Formerly a successful gallery and gift shop for many years. The open plan offers potential for retail or office space.

Lower level space available at \$4.00 per square foot.

<u>Suite #:</u>	<u>SF Available:</u>		
6570-6572	1,800-3,600 SF	Length of Lease:	Negotiable
Lower Level	1,800 SF (\$4.00/SF)	TI Allowance:	Negotiable
		Rent Escalator:	Negotiable
		Lease Form:	Landlord's

*Information furnished is from sources deemed reliable, but is not guaranteed by Colliers International, or its agents, and is subject to change, corrections, errors and omissions, prior sales, or withdrawn without notice.*

## Contact us

AGENT: Cori Adcock  
+1 402 763 1712  
Omaha, NE  
Cori.Adcock@colliers.com

COLLIERS INTERNATIONAL  
6464 Center Street | Suite 200  
Omaha, NE 68106  
www.colliers.com

FOR LEASE > RETAIL/OFFICE SPACE

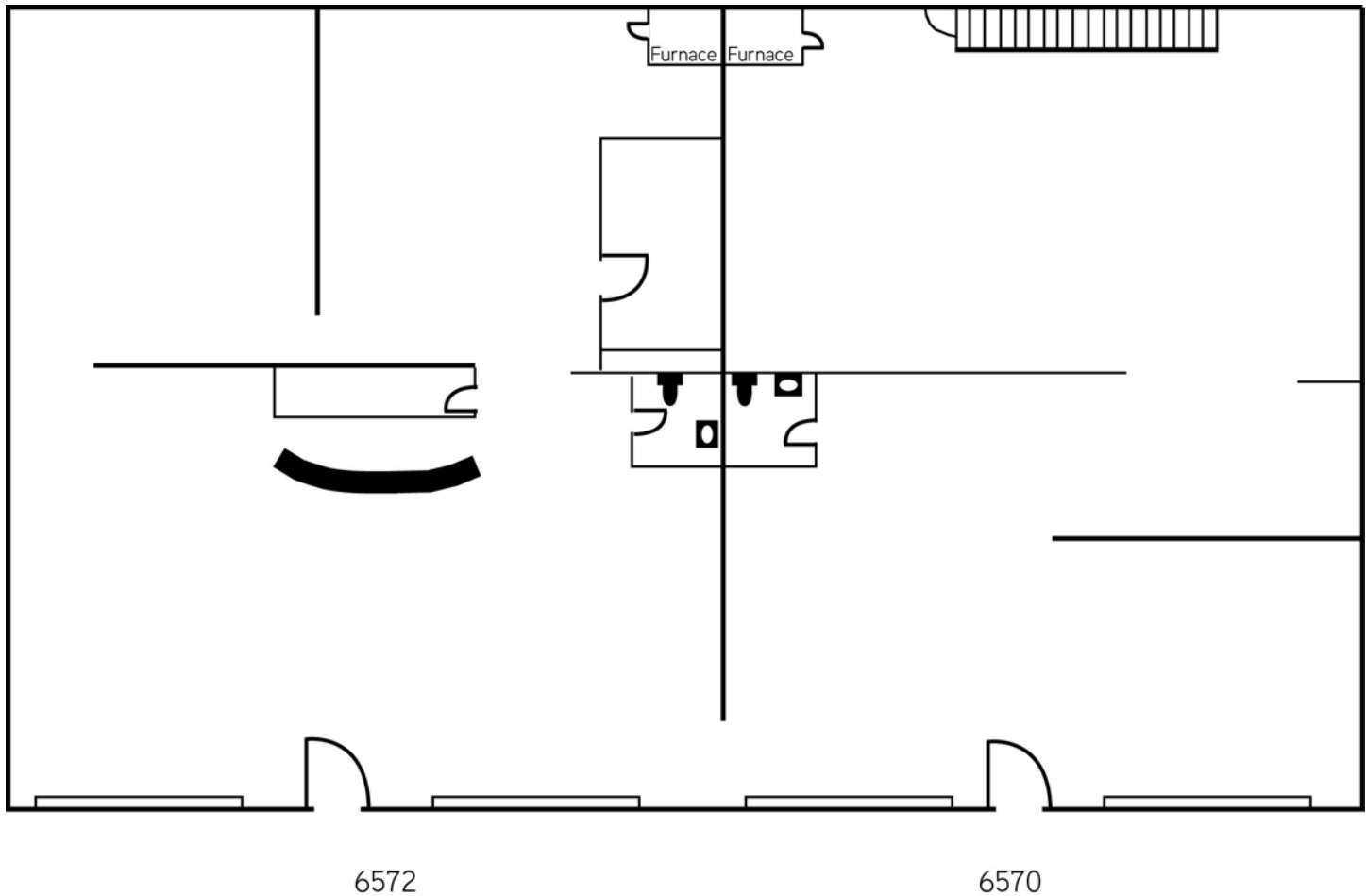
6570-6572 MAPLE STREET

OMAHA, NE 68104



Accelerating success.

## Floor plan



## Contact us

AGENT: Cori Adcock  
+1 402 763 1712  
Omaha, NE  
Cori.Adcock@colliers.com

COLLIERS INTERNATIONAL  
6464 Center Street | Suite 200  
Omaha, NE 68106  
www.colliers.com



FOR LEASE > RETAIL/OFFICE SPACE

6570-6572 MAPLE STREET

OMAHA, NE 68104



Accelerating success.

## Aerial



## Contact us

AGENT: Cori Adcock  
+1 402 763 1712  
Omaha, NE  
[Cori.Adcock@colliers.com](mailto:Cori.Adcock@colliers.com)

COLLIERS INTERNATIONAL  
6464 Center Street | Suite 200  
Omaha, NE 68106  
[www.colliers.com](http://www.colliers.com)