

REMINGTON COLLEGE BUILDING

REMINGTON  
*college building*

RETAIL SPACE > FOR LEASE  
1111 BISHOP STREET  
HONOLULU, HI 96813





The Remington College Building is an owner-operated and managed five story office building fronted by street retail shops and restaurants. The building is well-maintained by a full service team, including on-site management, janitorial, and security.

## Property Highlights

TMK:	1-2-1-10-10
Zoning:	BMX-4
Rent:	\$2.75 - \$4.50 PSF/Mo
Operating Expenses:	\$22-.66 PSF/Mo*
	<i>*Includes RPT, water, exhaust, common grease trap maintenance. Electricity separately metered.</i>
Term:	36 - 60 months
Parking:	Six Free Tenant/Customer Loading Stalls

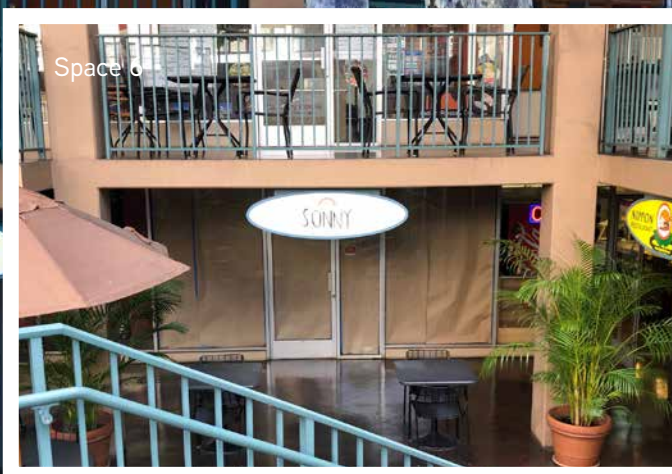
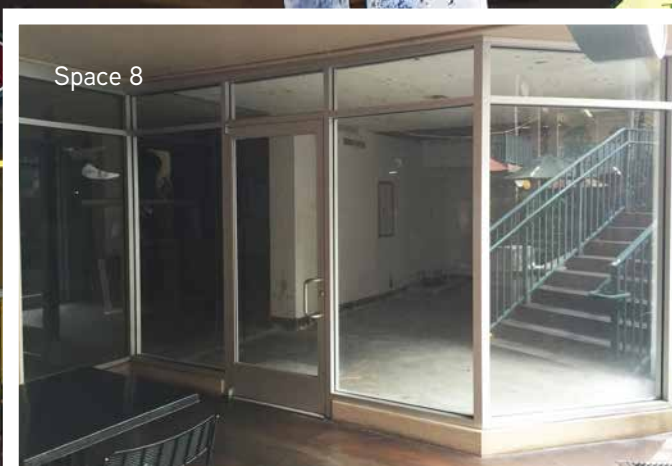
## Features & Benefits

- › Great visibility on Bishop Street
- › Convenient location
- › Access to numerous bus routes and ground transportation
- › Unique restaurants/retail stores
- › Outdoor lanai seating
- › Common grease trap



## Available Space

Unit	Size	Level	Rent PSF	Notes
1	173 SF	Lower Arcade	\$3.25	Good for quick service or sandwich shop
3	454 SF	Lower Arcade	\$3.25	Former Bakery. Good for quick service food operation
5	551 SF	Lower Arcade	\$3.25	Good for a quick service prepared food operation
6	550 SF	Lower Arcade	\$3.25	Good for a quick service prepared food operation
8	2,280 SF	Lower Arcade	\$2.75	Corner suite, open floor-plan, direct access to lower arcade lanai area and elevator
102	420 SF	1st Floor	\$4.50	Kitchen infrastructure and cooking are in acceptable condition



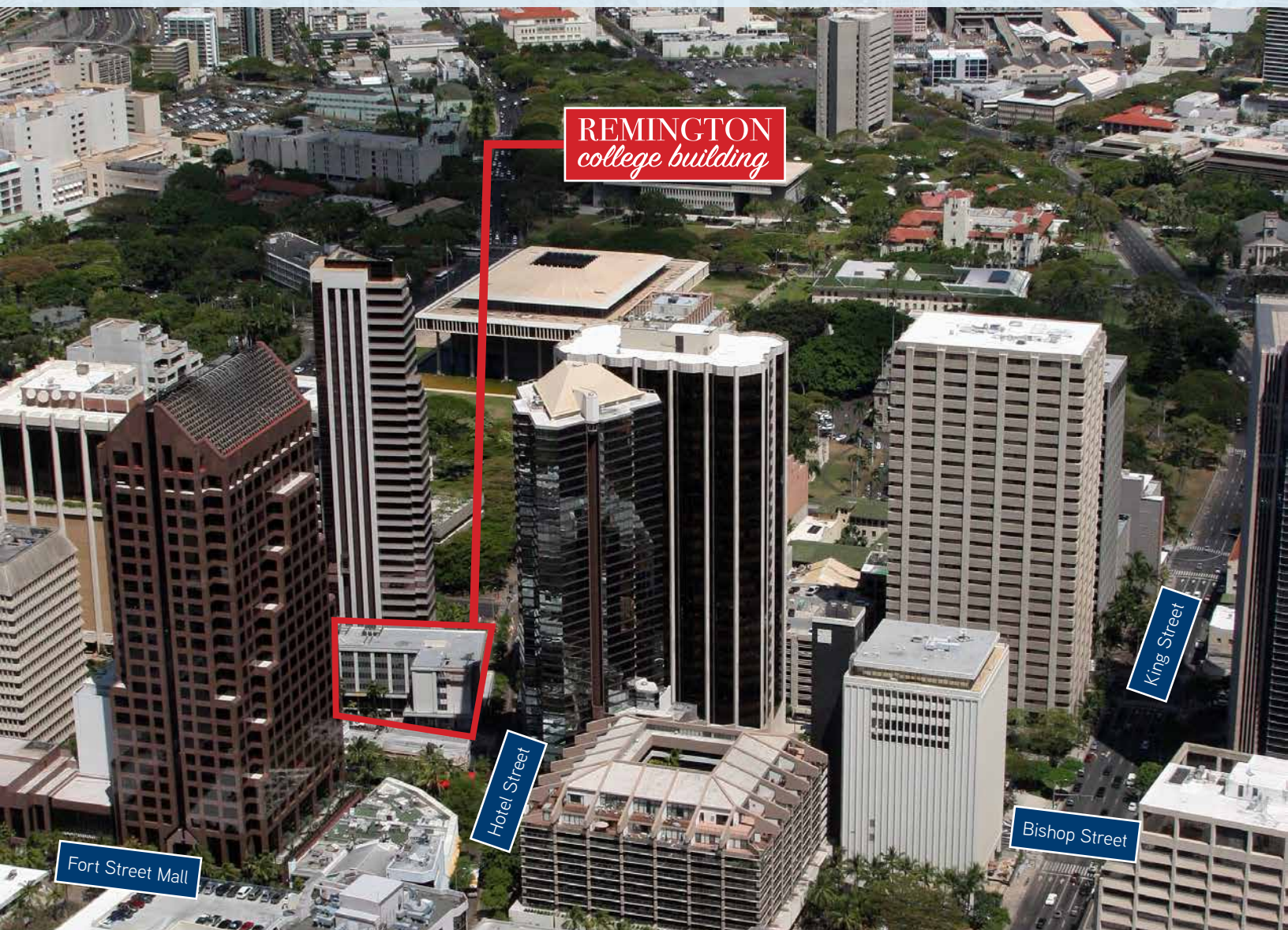
Neal E. Hafner (S)  
Senior Associate  
Office Services Division  
808 523 8313  
neal.hafner@colliers.com

Andy Kazama (S)  
Associate  
Retail Services Division  
808 523 9755  
andy.kazama@colliers.com



## Location Description

The building is in the mix of Honolulu's active Central Business District, on the corner of Bishop St. and Hotel St and is Ideally located next to Honolulu's premier office buildings, financial institutions, and college campuses which create great daily foot traffic for retail users. Remington College Building is situated within a block of numerous Bus routes, which offer easy access to ground transportation and is walking distance to the Downtown Post Office, Courthouses, City, State, and Federal government Offices.



Neal E. Hafner (S)  
Senior Associate  
Office Services Division  
808 523 8313  
neal.hafner@colliers.com

Andy Kazama (S)  
Associate  
Retail Services Division  
808 523 9755  
andy.kazama@colliers.com