

FOR LEASE > OFFICE SPACE

Rosehill Office Park

8725 & 8735 ROSEHILL ROAD, LENEXA, KS



Property Features

- > Two, four-story buildings totaling 120,000 SF
- > Upgraded 87th Street improvements now complete
- > Great access to I-35 and Hwy 69 from 87th Street
- > Turn-key tenant improvements
- > Card key access 24/7/365
- > Fully-furnished common areas
- > Beautiful landscaped setting
- > Ample parking
- > Professional management, stable local ownership
- > \$18.95 PSF, full-service

PAT COPPINGER
+1 816 556 1110
KANSAS CITY, MO
pat.coppinger@colliers.com

MATT STOVER
+1 816 556 1116
KANSAS CITY, MO
matt.stover@colliers.com

COLLIERS INTERNATIONAL
4520 Main Street, Suite 1000
Kansas City, MO 64111
www.colliers.com

FOR LEASE > OFFICE SPACE

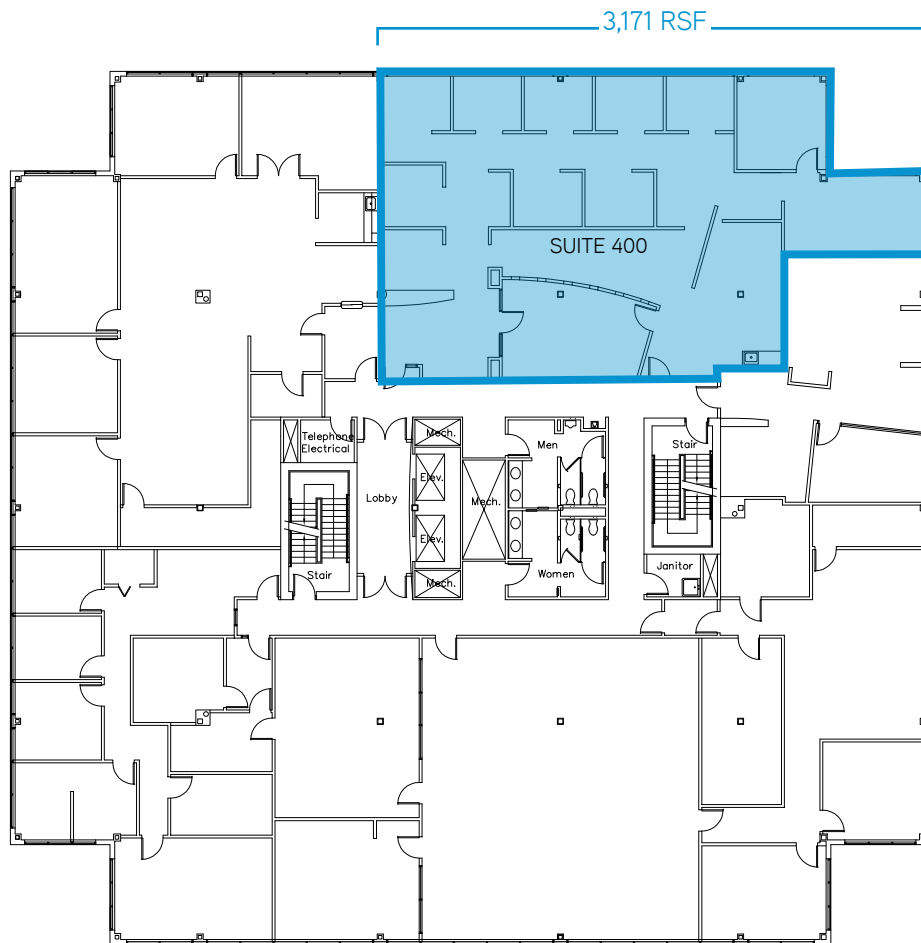
Rosehill Office Park > Floor Plans

8725 & 8735 ROSEHILL ROAD, LENEXA, KS

8725 Building Availability

FOURTH FLOOR:

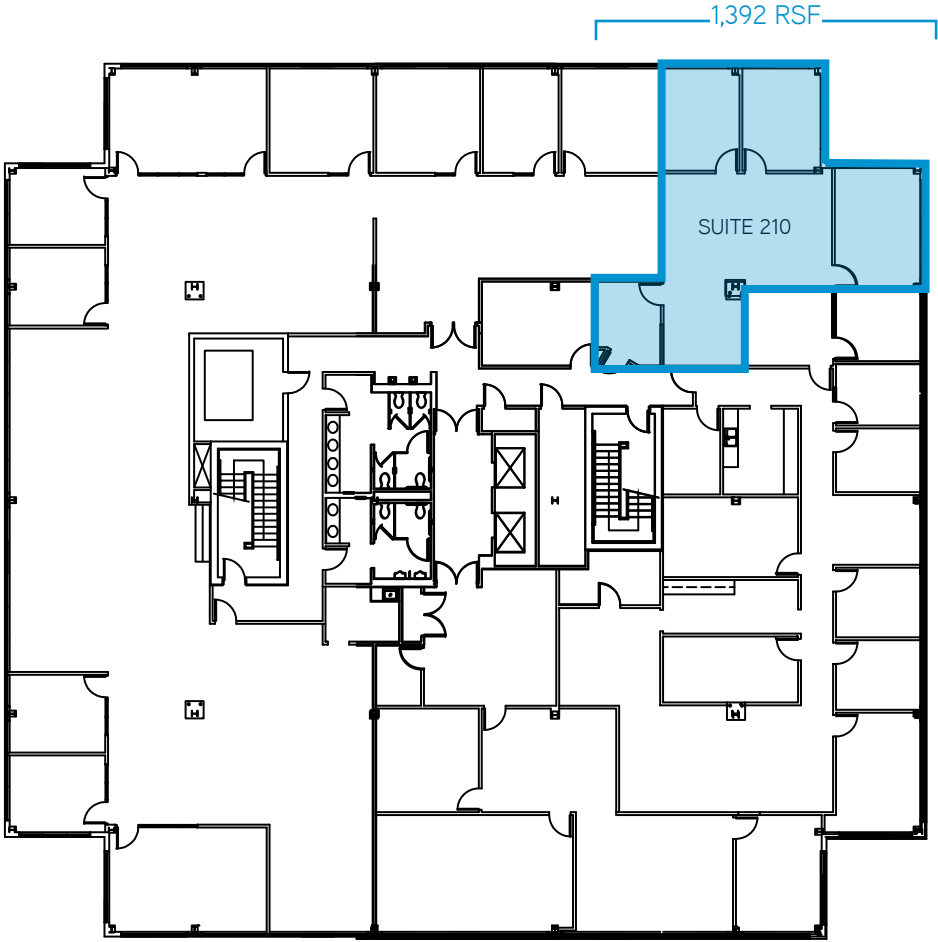
> Suite 400: 3,171 RSF



8735 Building Availability

SECOND FLOOR:

> Suite 210: 1,392 RSF



FOR LEASE > OFFICE SPACE

Rosehill Office Park

8725 & 8735 ROSEHILL ROAD, LENEXA, KS



Contact Us

PAT COPPINGER
+1 816 556 1110
KANSAS CITY, MO
pat.coppinger@colliers.com

MATT STOVER
+1 816 556 1116
KANSAS CITY, MO
matt.stover@colliers.com

Please contact us to see this property

COLLIERS INTERNATIONAL
4520 Main Street, Suite 1000
Kansas City, MO 64111
www.colliers.com

This document has been prepared by Colliers International for advertising and general information only. Colliers International makes no guarantees, representations or warranties of any kind, expressed or implied, regarding the information including, but not limited to, warranties of content, accuracy and reliability. Any interested party should undertake their own inquiries as to the accuracy of the information. Colliers International excludes unequivocally all inferred or implied terms, conditions and warranties arising out of this document and excludes all liability for loss and damages arising there from. This publication is the copyrighted property of Colliers International and/or its licensor(s). © 2018. All rights reserved.

