



zephyr WALK

1-99 JEFFERSON
FISHERMAN'S WHARF SAN FRANCISCO





COME ON BOARD ZEPHYR WALK,
THE FIRST STOP AT FISHERMANS WHARF

NOW UNDER CONSTRUCTION!

- **IN A RAPIDLY CHANGING PART OF THE WHARF**
- **AN ENTIRE BLOCK OF STREET FRONT RETAIL**
- **JOIN LOCAL ATTRACTIONS AND TENANTS:**
RIPLEY'S BELIEVE IT OR NOT, AQUARIUM OF THE BAY, MADAME TUSSAUDS, RED & WHITE FLEET, SAN FRANCISCO MARITIME NATIONAL HISTORIC PARK, BOUDIN BAKERY, LIDS, MUSÉE MÉCANIQUE, ALIOTO'S
- **AT THE DOORSTEP OF PIER 39**
- **AMONG THE HIGHEST FOOT TRAFFIC COUNTS IN ALL OF SAN FRANCISCO**
- **LOCATED UNDER RECENTLY RENOVATED 361-ROOM ZEPHYR HOTEL**



CBD

Union Square

North Beach

1-99 JEFFERSON

zephyr WALK

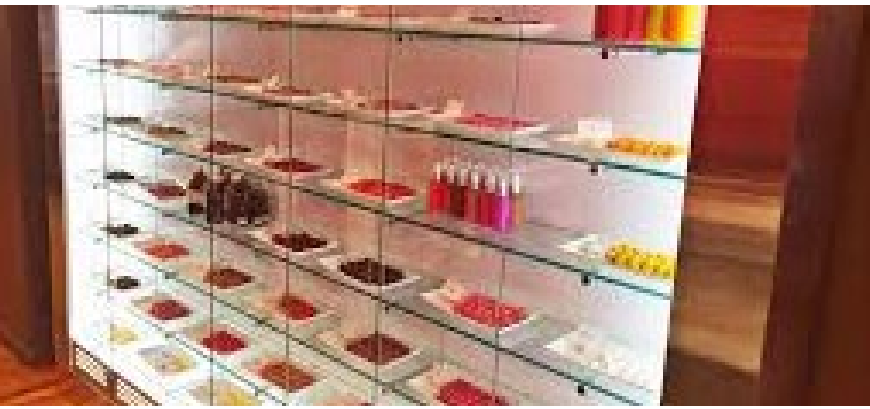
FISHERMAN'S WHARF SAN FRANCISCO



Madame Tussauds
Ripley's Believe It or Not!

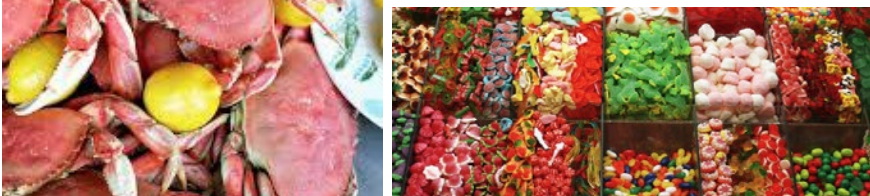
PIER 39





WANTED

- High quality, top producing memorable retailers
- 458 SF-1376 SF retail spaces available
- Façade renovation to be complete early Spring 2018
- Zephyr is proud to announce the signings of the following tenants:



12 MILLION PEOPLE VISIT FISHERMANS WHARF PER YEAR

zephyrWALK

H Hotel
Total Wharf
Room Count: 3,133

P Parking

Bus Line

MUNI F-Line

SF Maritime
National Park



PIER 39

P 150 Parking Spaces

P 180 Parking Spaces

Believe It or Not!

P 500 Parking Spaces

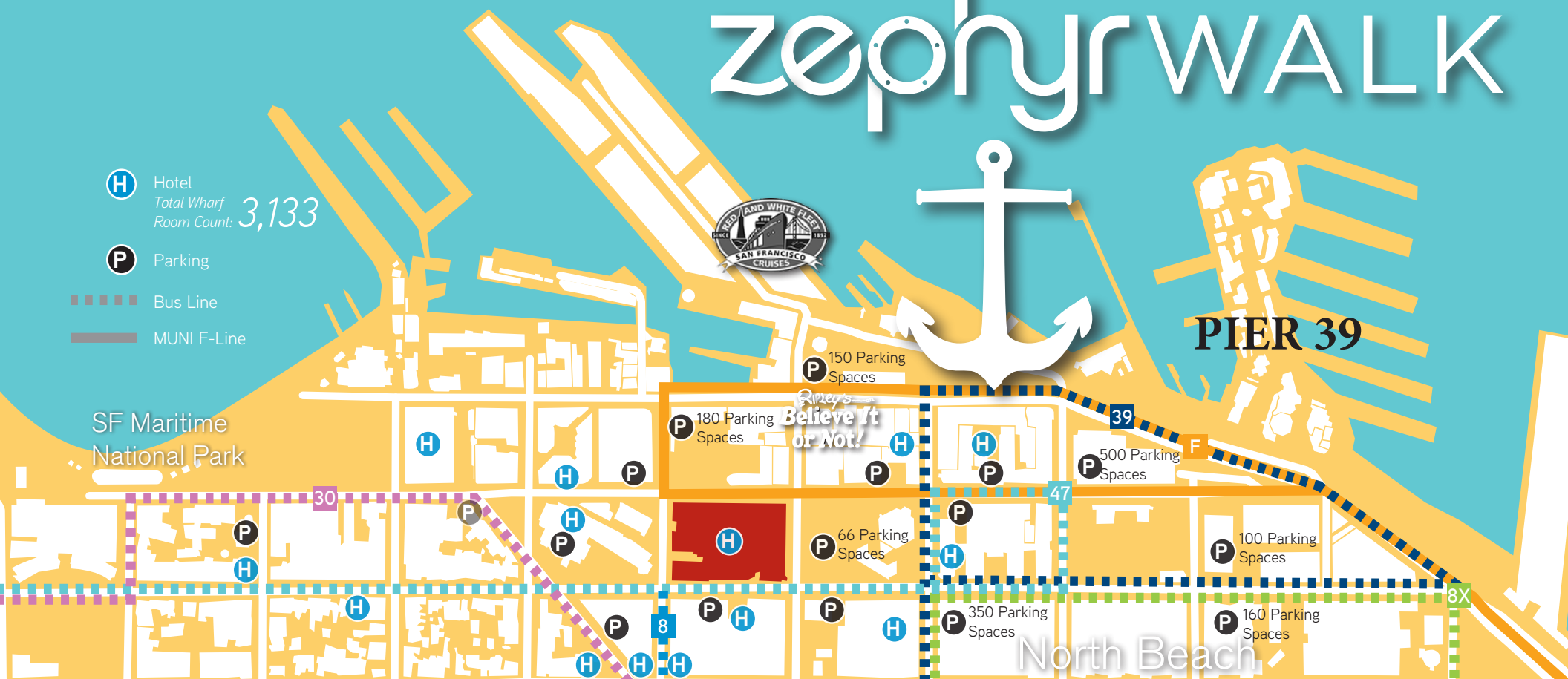
P 66 Parking Spaces

P 100 Parking Spaces

P 350 Parking Spaces

P 160 Parking Spaces

North Beach



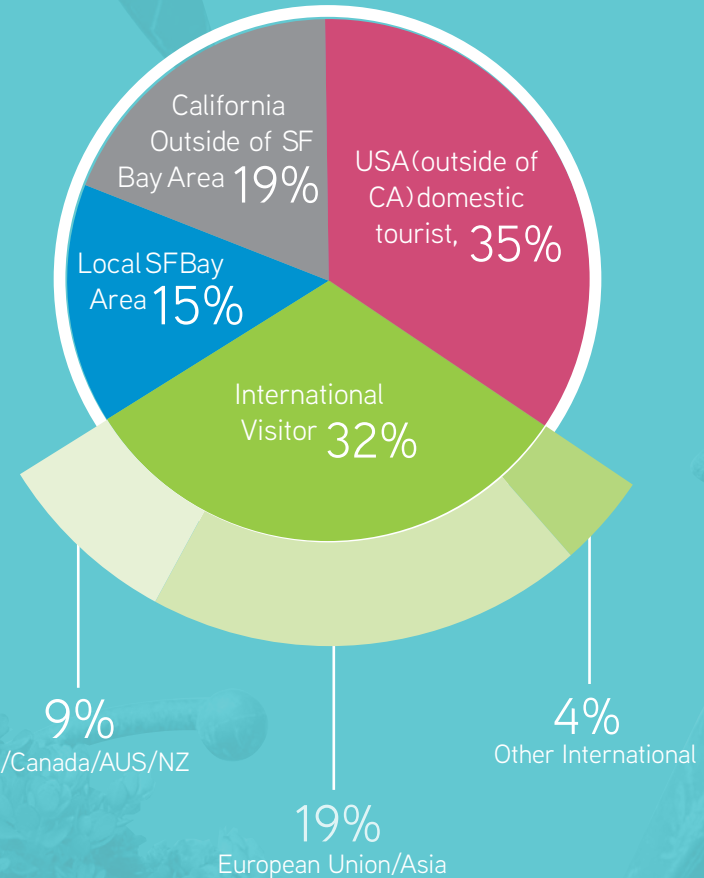
WHARF VISITOR DEMOGRAPHICS

| | |
|------------------------|----------|
| AVERAGE AGE | 44 years |
| COLLEGE GRADS | 57% |
| MALE/FEMALE | 50/50 |
| MARRIED COUPLES | 60% |
| KIDS AT HOME | 38% |

| | |
|----------------------------|----------|
| AVERAGE HH INCOME | \$94,000 |
| AVERAGE EXPENDITURE | \$86 |

| | |
|--------------------------------|---------|
| AVERAGE LENGTH OF VISIT | 3.6 hrs |
|--------------------------------|---------|

DOMESTIC/INTERNATIONAL TOURISM



(Source: Destination Analysts, Inc.)



JEFFERSON STREET RETAIL

MASON STREET

POWELL STREET

**ZEPHYR LOBBY
& REGISTRATION**

Existing Floor Plan

JEFFERSON STREET

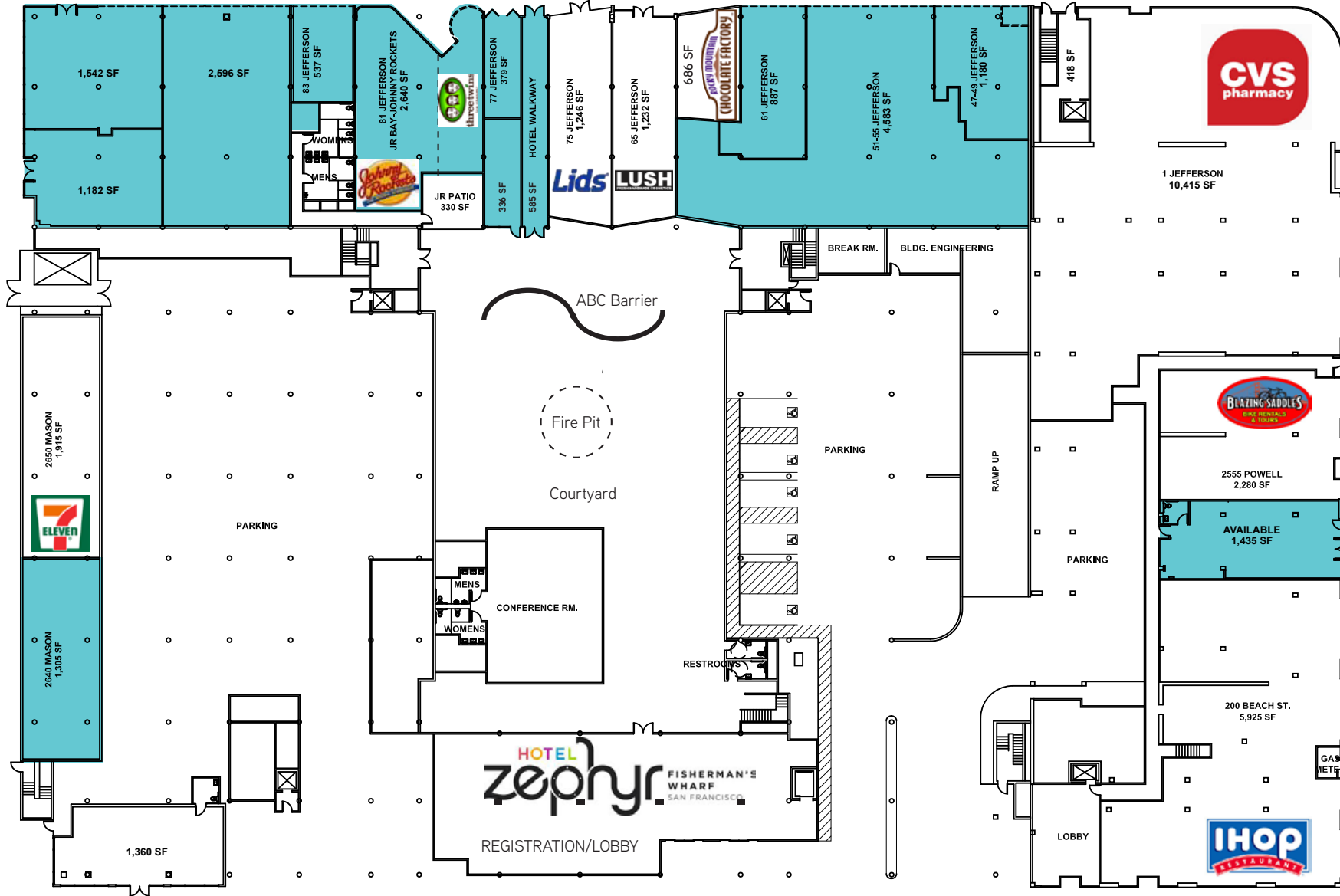
Available Space

Lease Expirations

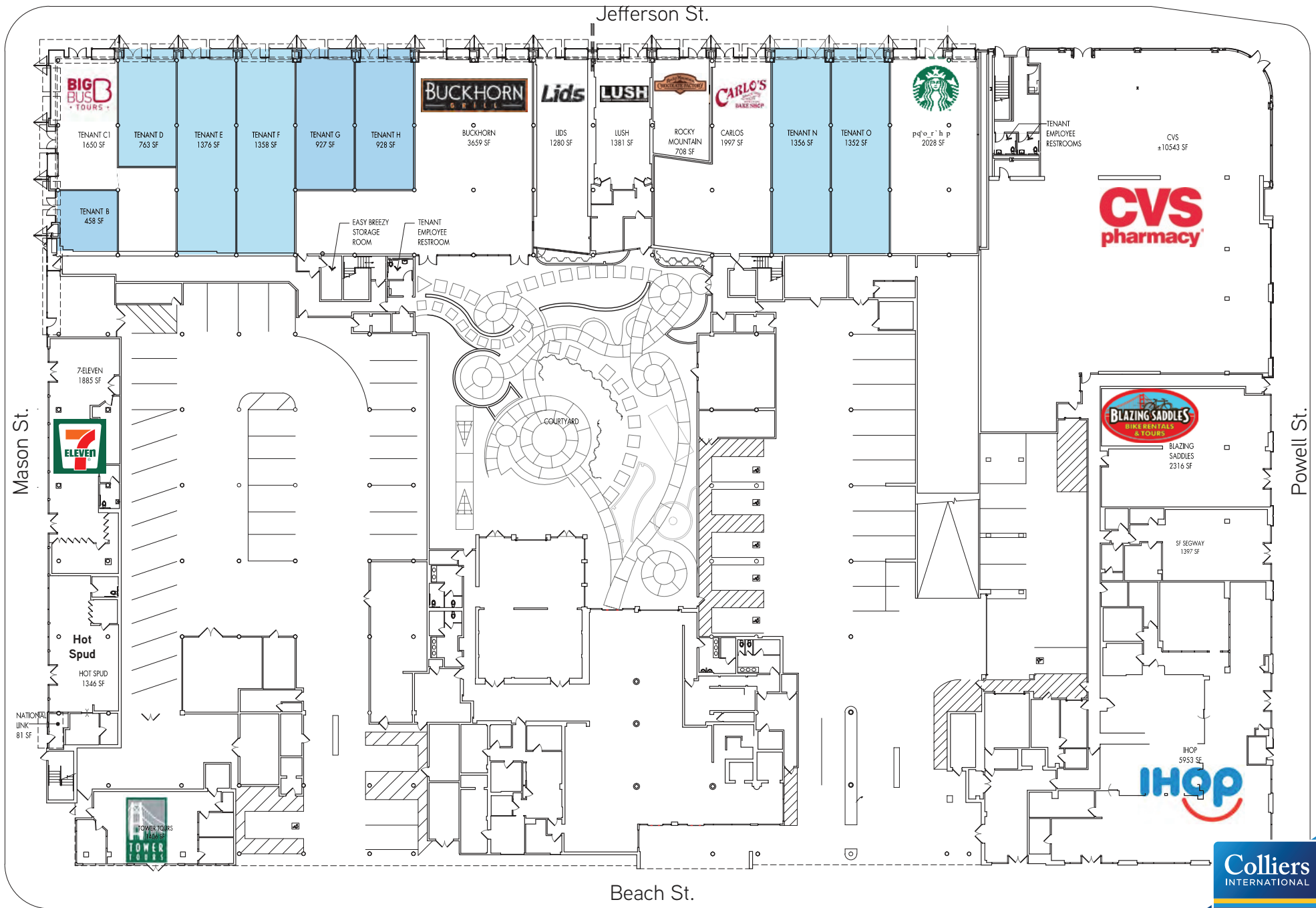
■ 2017

MASON STREET

POWELL STREET



zephyrWALK SITE PLAN





**PROVACATIVE
INTRIGUING
WHIMSICAL
IRREVERENT**



**PLAYFUL
ARTISTIC**

zephyrWALK

1-99 JEFFERSON

zephyr WALK

FISHERMAN'S WHARF SAN FRANCISCO

FOR RETAIL LEASING INFORMATION, PLEASE CONTACT

Julie Taylor

1 415 293 6293

julie.taylor@colliers.com

Lic. 00998395

Tom Neuburger

1 415 293 6294

tom.n@colliers.com

Lic. 01439740

