

FOR SALE OR LEASE > ±8,745 SQUARE FEET

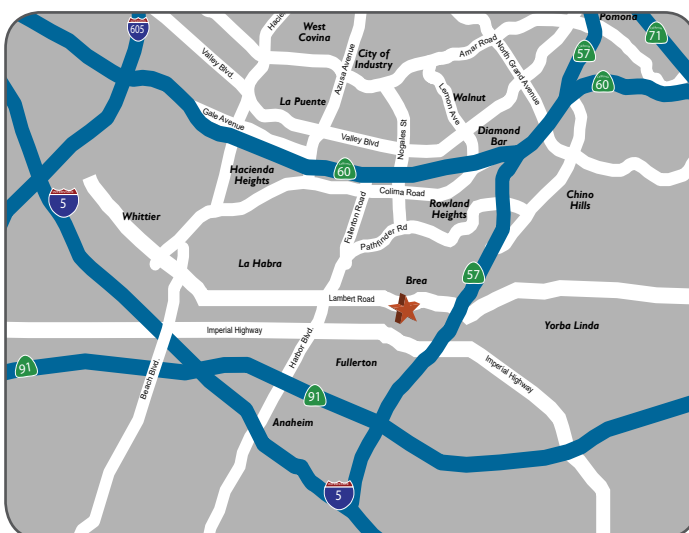
315 PUENTE STREET, UNIT A & B

BREA, CALIFORNIA 92821



Property Highlights:

- > High Image 2-Story Office Space
- > ±80% Office Build-Out
- > 1 Ground Level Loading Door
- > 22' Warehouse Clearance
- > Major Street Frontage and Signage
- > Business Park Environment
- > 200 Amps Electrical Service
- > Immediate Access to Santa Ana (5), Riverside (91) & Orange (57) Freeway



JEFFREY KIM

Vice President
License No. 01814427
626 283 4559
jeffrey.kim@colliers.com

WILLIAM KIM

Vice President
License No. 01217282
626 283 4563
will.kim@colliers.com

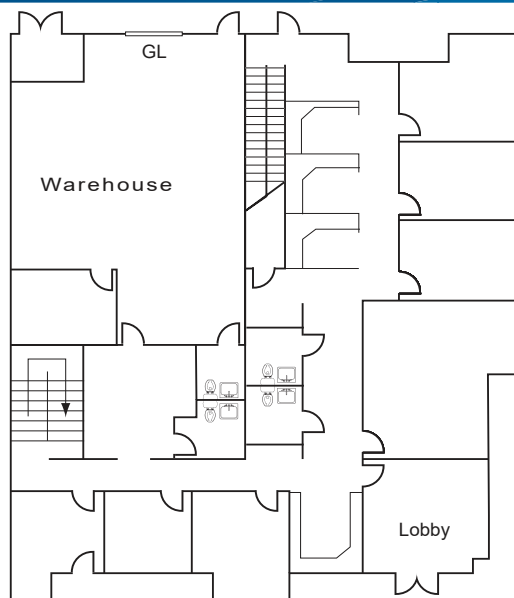
COLLIERS INTERNATIONAL

17800 Castleton St, Ste 495
City of Industry, CA 91748
www.colliers.com

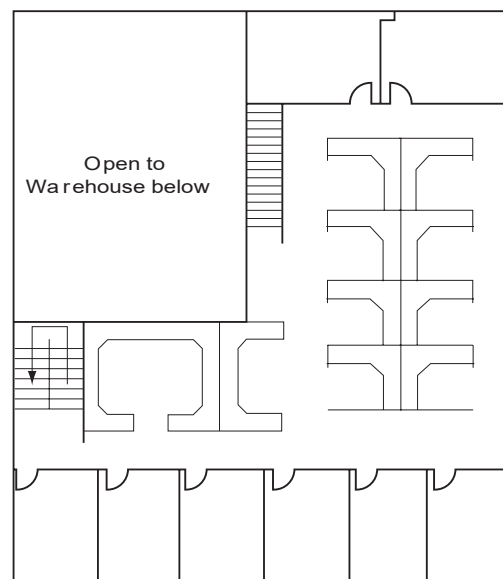
FOR SALE OR LEASE > ±8,745 SQUARE FEET

315 PUENTE STREET, UNIT A & B

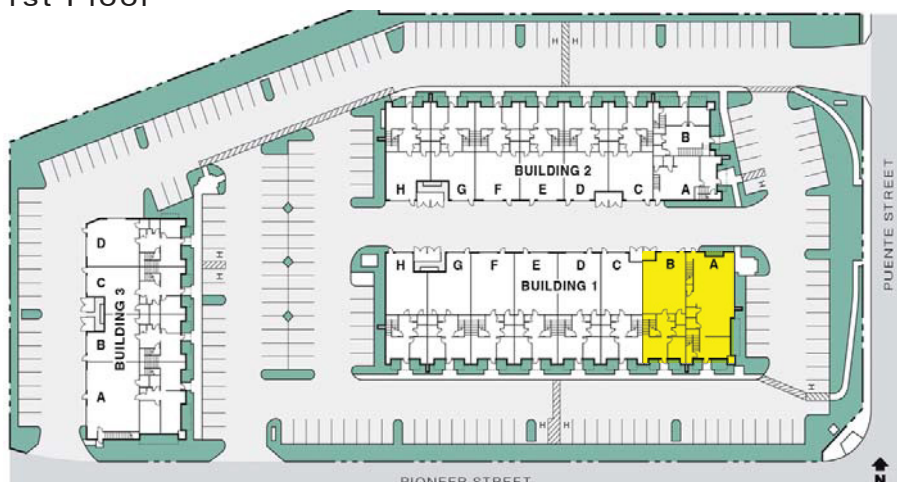
BREA, CALIFORNIA 92821



1st Floor



2nd Floor



*Floor Plans Not To Scale

For additional information contact:

JEFFREY KIM
Vice President
License No. 01814427
626 283 4559
jeffrey.kim@colliers.com

WILLIAM KIM
Vice President
License No. 01217282
626 283 4563
will.kim@colliers.com

COLLIERS INTERNATIONAL
17800 Castleton St, Ste 495
City of Industry, CA 91748
www.colliers.com