



244 Jackson

CREATIVE | FULL FLOORS | EXCEPTIONAL LOCATION

Originally constructed in 1939 as a warehouse building adjacent to the old San Francisco waterfront, 244 Jackson now stands as a first-class office and retail building at the entrance to Jackson Square. Steps from Sydney Walton Park, Safeway, and first class restaurants, 5 blocks to Market Street for Bart and Muni transportation, and boasting highly renovated full floor opportunities, 244 Jackson Street is a rare opportunity for discerning San Francisco companies.

- Boutique Renovated Class A in Jackson Square
- Steps away from Sydney Walton Square
- Recently remodeled building lobby
- Full HVAC, seismically updated
- Public parking within 1 block

Contact Us

Jim Sobel

lic 00965752

jim.sobel@colliers.com

415 288 7804

Brendon Kane

lic 01884552

brendon.kane@colliers.com

415 288 7868

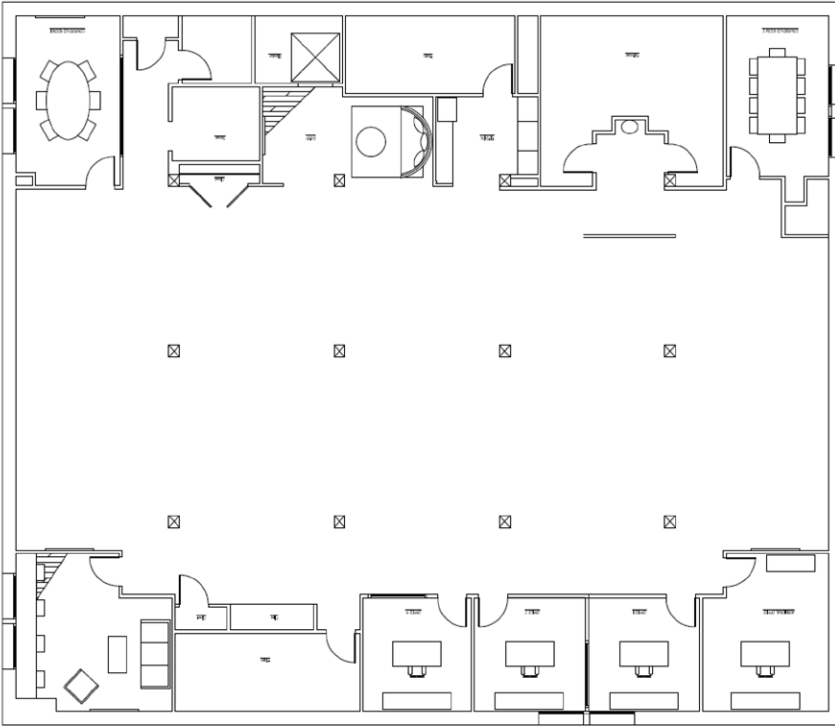
Colliers
INTERNATIONAL

244 Jackson

CREATIVE | FULL FLOORS | EXCEPTIONAL LOCATION

*Spec
Renovation
Underway*

Full 3rd floor 6,426 RSF



- › Full floor identity
- › 5 private offices
- › 2 conference rooms
- › Open exposed ceiling
- › Large open area
- › Kitchen
- › HVAC
- › Excellent natural light
- › Dog friendly
- › Bike friendly
- › Available September 1, 2017



This document has been prepared by Colliers International for advertising and general information only. Colliers International makes no guarantees, representations or warranties of any kind, expressed or implied, regarding the information including, but not limited to, warranties of content, accuracy and reliability. Any interested party should undertake their own inquiries as to the accuracy of the information. Colliers International excludes unequivocally all inferred or implied terms, conditions and warranties arising out of this document and excludes all liability for loss and damages arising there from. This publication is the copyrighted property of Colliers International and/or its licensor(s). ©2016. All rights reserved.

Colliers
INTERNATIONAL