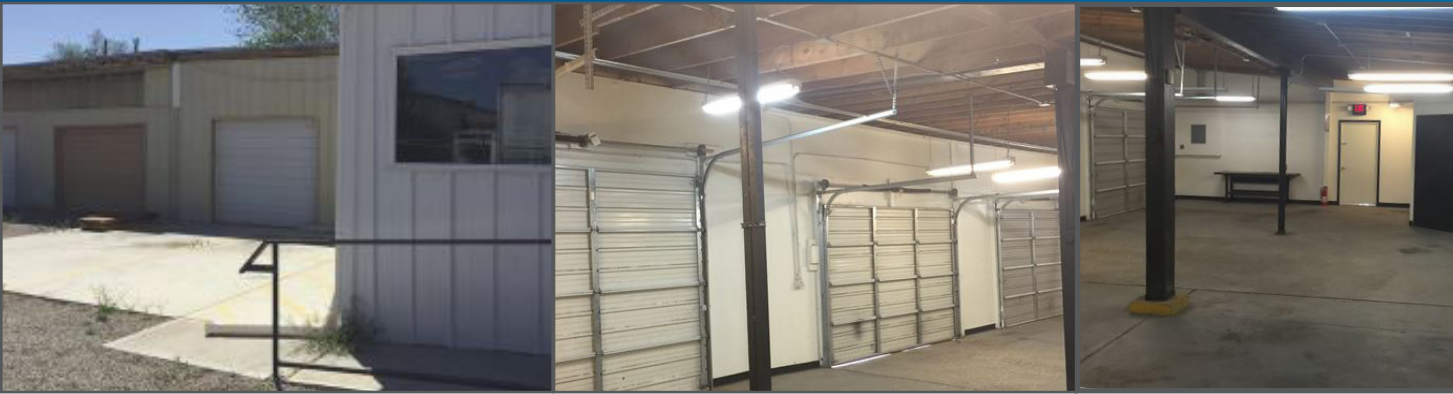


INDUSTRIAL PROPERTY FOR SALE

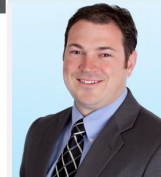
9900-9902 ACOMA RD. SE, ALBUQUERQUE, NM 87123



CONTACT US



BILL ROBERTSON
LIC. #8433
SENIOR VICE PRESIDENT/
PRINCIPAL
505 880 7050
bill.robertson@colliers.com



TOM FRANCHINI, CCIM
LIC. #40532
SENIOR ASSOCIATE
505 880 7097
tom.franchini@colliers.com



LORI ROBERTSON
LIC. #32667
ASSOCIATE BROKER
505 880 7044
lori.robertson@colliers.com




COLLIERS INTERNATIONAL
5051 Journal Center NE | Ste. 200
Albuquerque, NM 87109
505 883 7676
www.colliers.com


This document/email has been prepared by Colliers International for advertising and general information only. Colliers International makes no guarantees, representations or warranties of any kind, expressed or implied, regarding the information including, but not limited to, warranties of content, accuracy and reliability. Any interested party should undertake their own inquiries as to the accuracy of the information. Colliers International excludes unequivocally all inferred or implied terms, conditions and warranties arising out of this document and excludes all liability for loss and damages arising there from. This publication is the copyrighted property of Colliers International and /or its licensor(s). © 2016. All rights reserved. This communication is not intended to cause or induce breach of an existing listing agreement.

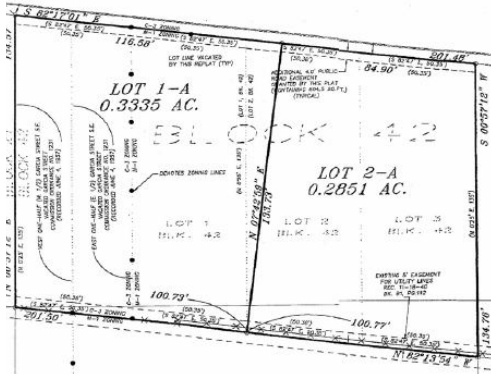
SALE DETAILS

9900-9902 ACOMA LOT (1&2-A)
SALE PRICE \$280,000.00
TOTAL BUILDING SF: +/- 4,000
TOTAL LAND SIZE: +/- .6186 ACRES

INDIVIDUAL LOT DETAILS

 **9900 ACOMA** LOT (1-A)
LOT SIZE +/- .335 ACRES
BUILDING SIZE +/- 1,300 SF
ZONING C-3 & M-1
DRIVE-IN DOORS 3
OVERSIZED FENCED YARD FOR STORAGE

 **9902 ACOMA** LOT (2-A)
LOT SIZE +/- .285 ACRES
BUILDING SIZE +/- 2,700 SF
ZONING M-1
DRIVE-IN DOORS 3
ADDITIONAL STORAGE SHED AND FENCED YARD



AERIAL

9900-9902 ACOMA RD. SE, ALBUQUERQUE, NM 87123

