

3

6

1

5

NORTH
27TH
AVENUE

FOR LEASE AND SALE

OFFICE BUILDING



Rendering is a proposed design

\$4,800,000 (\$40.00 PSF)
±120,000 SF AVAILABLE

PROPERTY DESCRIPTION

- Building A: ±100,000 SF 3-story building
- ±33,333 SF on each floor
- Building B: ±20,000 SF 1-story building
- 7.44:1,000 parking (potential)
- Parcel: 110-20-004A
- Zoning: C-2, City of Phoenix
- Lot Size: ±6.15 Acres
- Year Built: 1960

PROPERTY HIGHLIGHTS

- Easy Access to I-17
- Abundant Parking
- Reinforced 5" Concrete Floors Bearing 350 lbs/SF
- Full Perimeter Fence

FENWAY
PROPERTIES

Colliers
INTERNATIONAL

RYAN TIMPANI | VICE PRESIDENT
602 222 5193 | ryan.timpani@colliers.com

KYLE CAMPBELL | ASSOCIATE
602 222 5062 | kyle.campbell@colliers.com

COLLIERS INTERNATIONAL
2390 E. Camelback Rd., Suite 100,
Phoenix, AZ 85016
www.colliers.com/greaterphoenix

LOCATION MAP 3615 N 27TH AVE



FENWAY
PROPERTIES

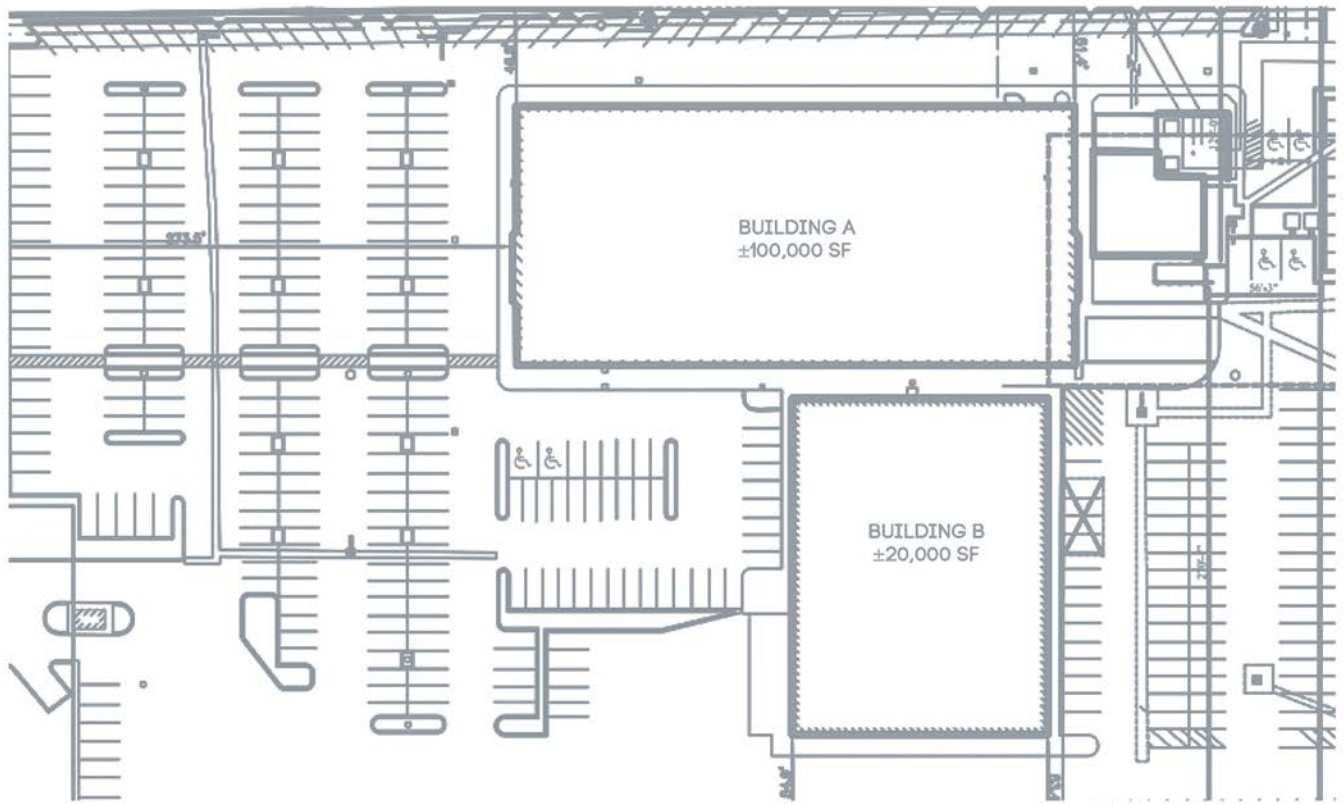
Colliers
INTERNATIONAL

RYAN TIMPANI | VICE PRESIDENT
602 222 5193 | ryan.timpani@colliers.com

KYLE CAMPBELL | ASSOCIATE
602 222 5062 | kyle.campbell@colliers.com

COLLIERS INTERNATIONAL
2390 E. Camelback Rd., Suite 100,
Phoenix, AZ 85016
www.colliers.com/greaterphoenix

SITE PLAN 3615 N 27TH AVE



PROPOSED



PROPOSED

FENWAY
PROPERTIES

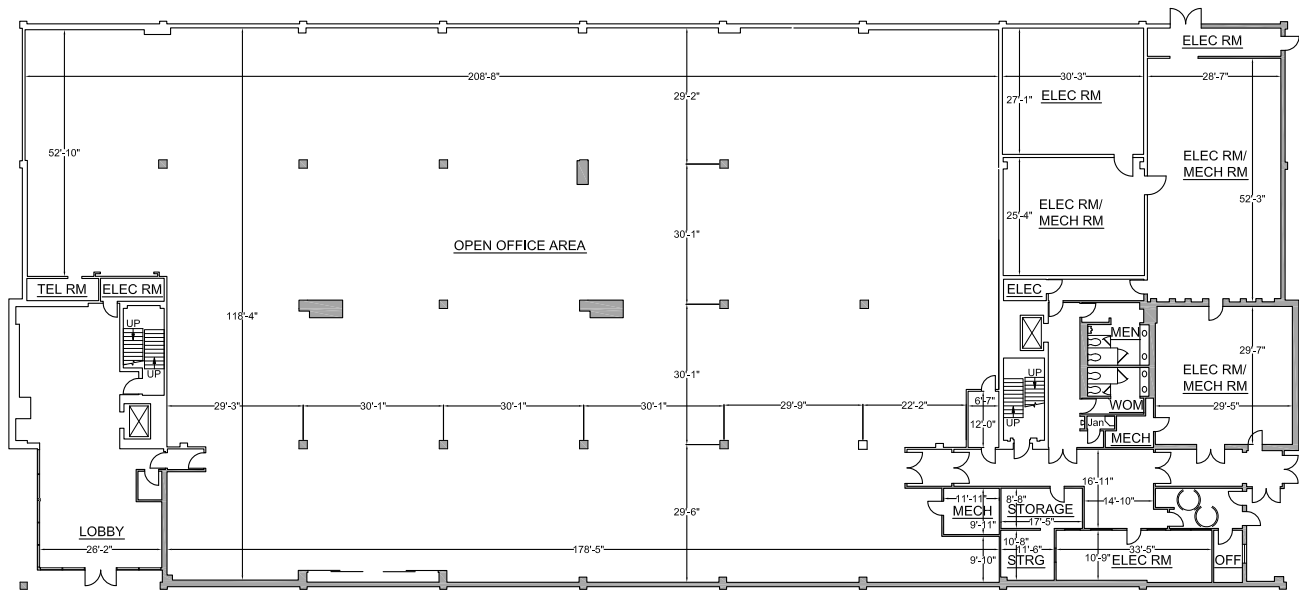


RYAN TIMPANI | VICE PRESIDENT
602 222 5193 | ryan.timpani@colliers.com

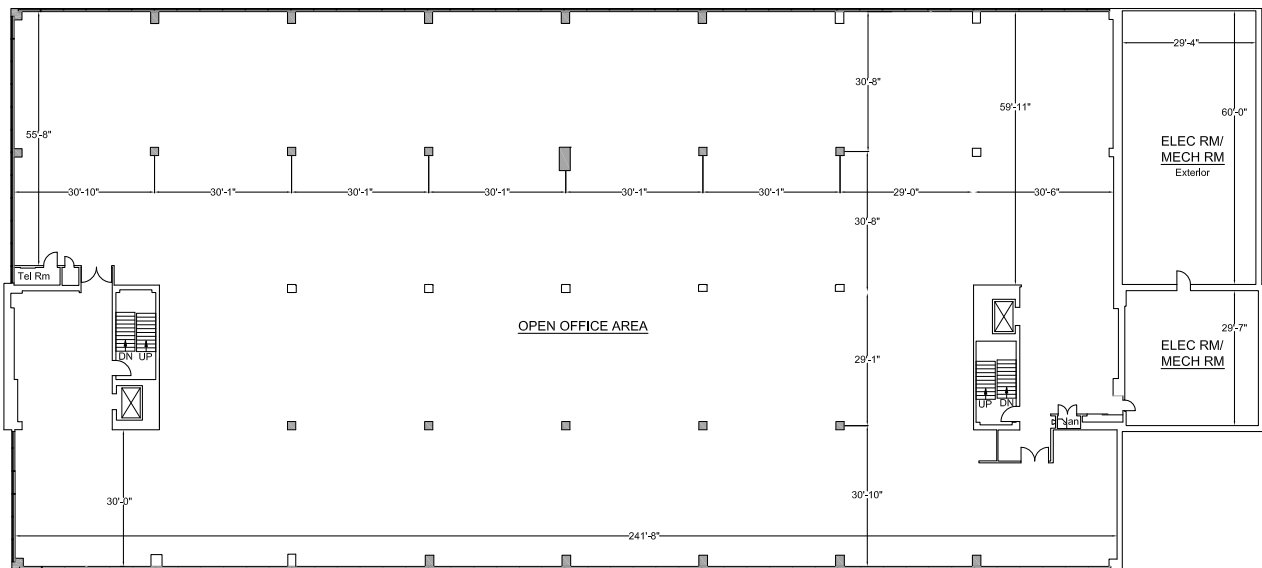
KYLE CAMPBELL | ASSOCIATE
602 222 5062 | kyle.campbell@colliers.com

COLLIERS INTERNATIONAL
2390 E. Camelback Rd., Suite 100,
Phoenix, AZ 85016
www.colliers.com/greaterphoenix

FLOOR PLANS 3615 N 27TH AVE



1ST FLOOR OFFICE FLOOR PLATE - 33,333 SF



2ND FLOOR OFFICE FLOOR PLATE - 33,333 SF

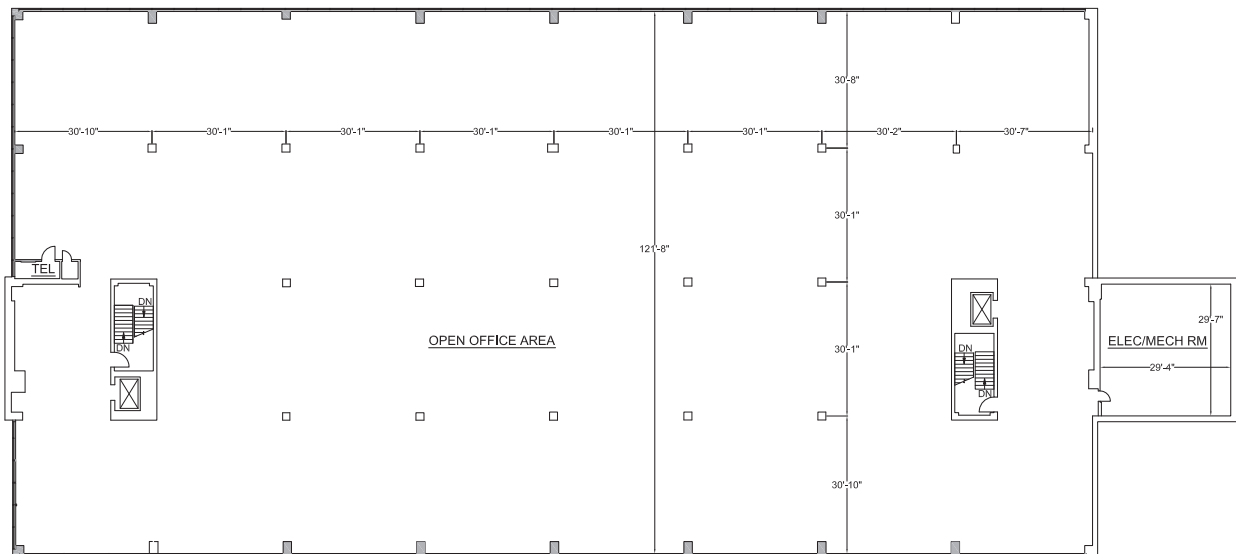


RYAN TIMPANI | VICE PRESIDENT
602 222 5193 | ryan.timpani@colliers.com

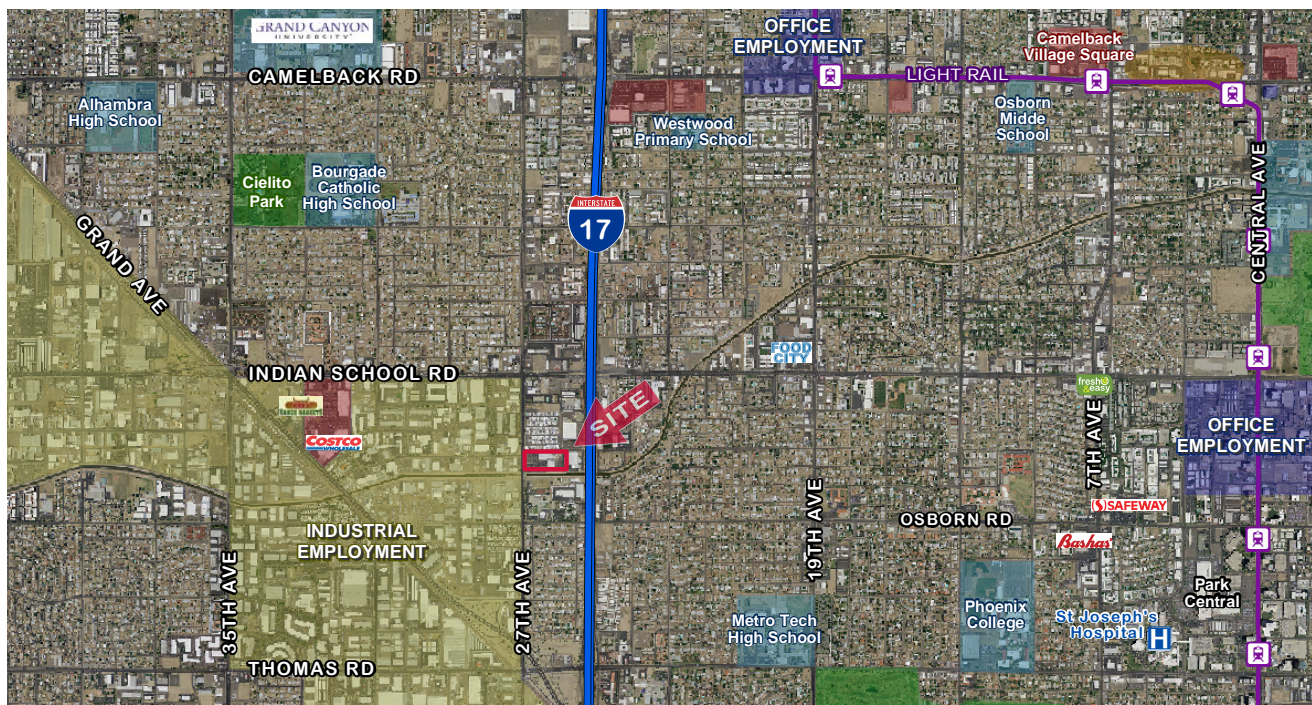
KYLE CAMPBELL | ASSOCIATE
602 222 5062 | kyle.campbell@colliers.com

COLLIERS INTERNATIONAL
2390 E. Camelback Rd., Suite 100,
Phoenix, AZ 85016
www.colliers.com/greaterphoenix

FLOOR PLANS 3615 N 27TH AVE



3RD FLOOR OFFICE FLOOR PLATE - 33,333 SF



2ND FLOOR OFFICE FLOOR PLATE - 33,333 SF

